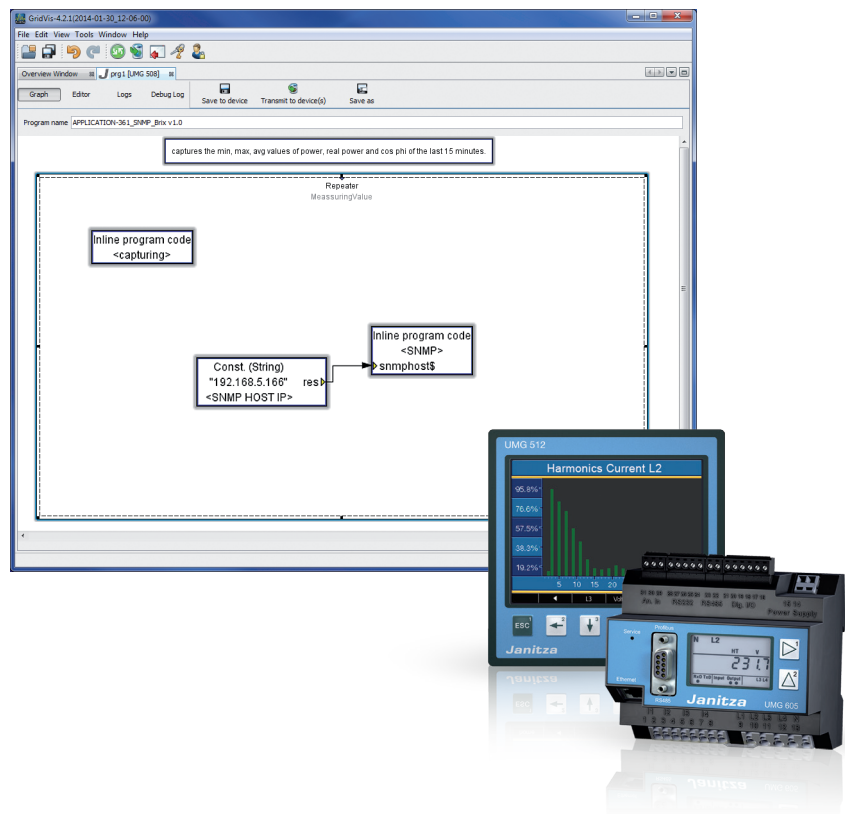


## Functional description

# Power values via SNMP

Article no.: 15.06.340



## Contents

<b>Introduction</b>	<b>3</b>
<b>Copyright</b>	<b>3</b>
<b>Trademarks</b>	<b>3</b>
<b>Disclaimer</b>	<b>3</b>
<b>Comments on the manual</b>	<b>3</b>
<b>Application information</b>	<b>5</b>
<b>Installation der App</b>	<b>5</b>
<b>Configuration</b>	<b>6</b>

## Introduction

### Copyright

This functional description is subject to the legal requirements for copyright protection and may not be, either in whole or in part, photocopied, reprinted, or reproduced by mechanical or electronic means, or in any other manner be duplicated or redistributed without the legally binding, written agreement of

Janitza electronics GmbH, Vor dem Polstück 1,  
D 35633 Lahnau, Germany,

### Trademarks

All trademarks and their resulting rights belong to the respective holders of these rights.

### Disclaimer

Janitza electronics GmbH takes no responsibility for errors or defects within this functional description and takes no responsibility for keeping the contents of this operating manual up to date.

### Comments on the manual

We welcome your comments. In the event that anything in this manual seems unclear, please let us know and send an EMAIL to: [info@janitza.de](mailto:info@janitza.de)



Follow the instructions in the operating manual when installation and operating the device!

## Meaning of the symbols

The following pictograms are used in the operating manual at hand:



### **Dangerous voltage!**

Danger to life or risk of serious injury. Disconnect system and device from power supply before beginning work on them.



### **Caution!**

Please follow the documentation. This symbol warns of possible dangers that can arise during installation, commissioning and use.



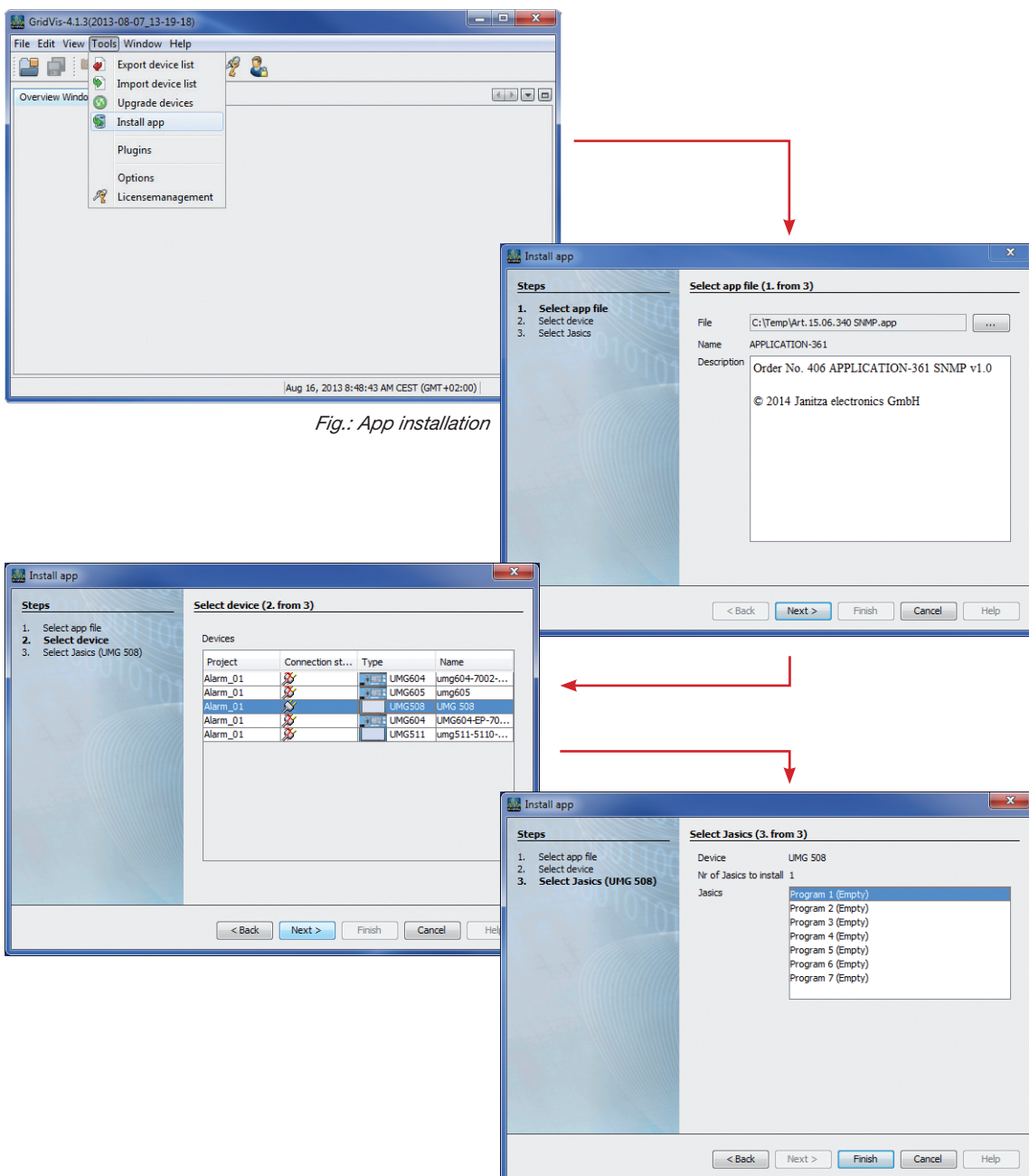
### **Note**

## Application information

The Application „Power values via SNMP“ transmits beside the 15 minute averaged real and apparent sum power and cos-phi also the minimal and maximal power of the last 15 minutes to an SNMP host.

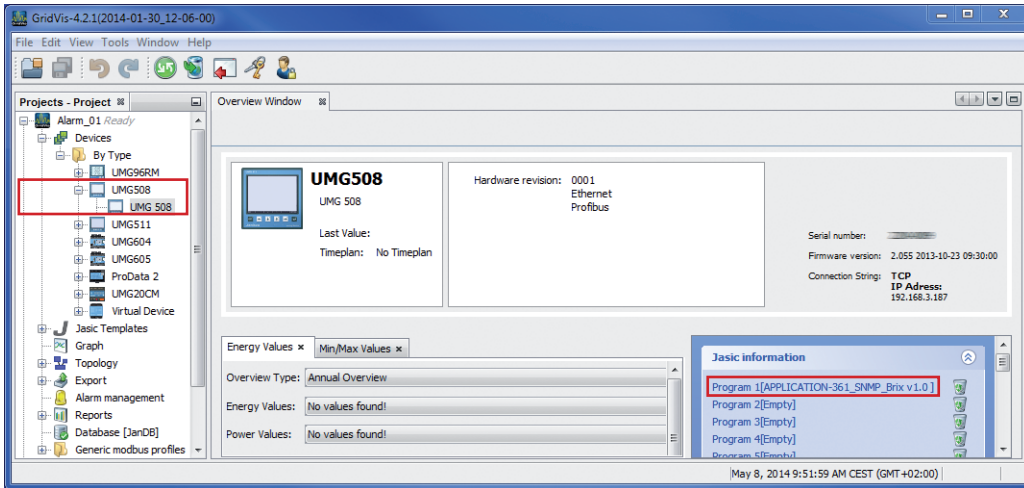
## Installation der App

Zur Installation der App starten Sie die Software GridVis. Klicken Sie auf „Extras / App installieren“ und wählen Sie die App über die Schaltfläche „ ... “ aus. Danach markieren Sie das Gerät für die Installation und wählen einen Programmplatz aus.



## Configuration

After the installation of the application you can configure it directly in the graphical jasic programming module. Pick the device with the application installed in the device tree and choose the applications jasic program slot.



Double click the field “SNMP HOST IP”. In the opening mask, you can set the new ip address of the snmp host. After that, push the transmit button to save the changes.

