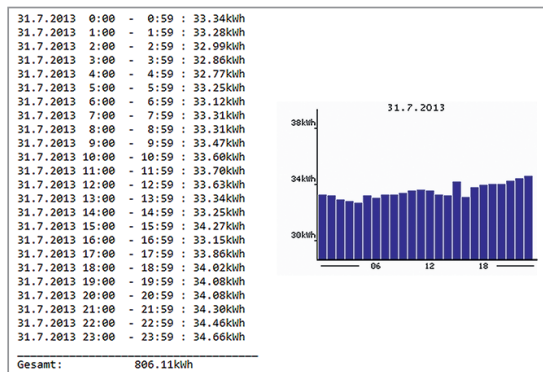


Functional description

Notification app



Contents

General information	3
Copyright	3
Trademarks	3
Disclaimer	3
Comments on the manual	3
Function of the notification app	5
Installing the app	5
Configuration menu	6
Overview	7
Menu bar	8
Mail server configuration	8
Event configuration	9
Event alarm	9
Event report	10
Example report	11
Transient alarm	12
Energy report	12

General information

Copyright

This functional description is subject to the statutory provisions of copyright law and may neither be photocopied, reprinted, or reproduced - in whole or in part, by mechanical or electronic means - nor otherwise duplicated or republished, without the binding written permission of:

Janitza electronics GmbH, Vor dem Polstück 1,
D 35633 Lahnau, Germany

Trademarks

All trademarks and the resulting rights are the property of their respective owners.

Disclaimer

Janitza electronics GmbH accepts no responsibility for errors or deficiencies within this functional description, and makes no commitment to keep the contents of this functional description up to date.

Comments on the manual

We welcome your comments. If anything in this manual seems unclear, please let us know by sending an e-mail to: info@janitza.de



For information on installing and using the application, refer to the device operating manual!

Meaning of symbols

This manual uses the following pictograms:



Dangerous voltage!

Risk to life or serious injury. Before commencing work on the system and the device, they must first be de-energised.



Please note!

Please pay attention to the documentation. This symbol is intended to warn you of potential dangers, which could occur during installation, commissioning and use.



Note

Function of the notification app

- The notification app sends e-mails when certain events occur (e.g. overvoltages and undervoltages) as well as a report when an event as concluded, transients, and time-controlled energy reports. It is also possible for other applications to connect to the notification app and use it to trigger the sending of e-mails. The text of the e-mails is freely configurable and provides the option to use placeholders, which are then replaced by system values.

Installing the app

- To install the app, launch the GridVis software. Click on "Tools / Install app" and select the app with the " .. " button. Then select the device for the installation and select a location for the program.

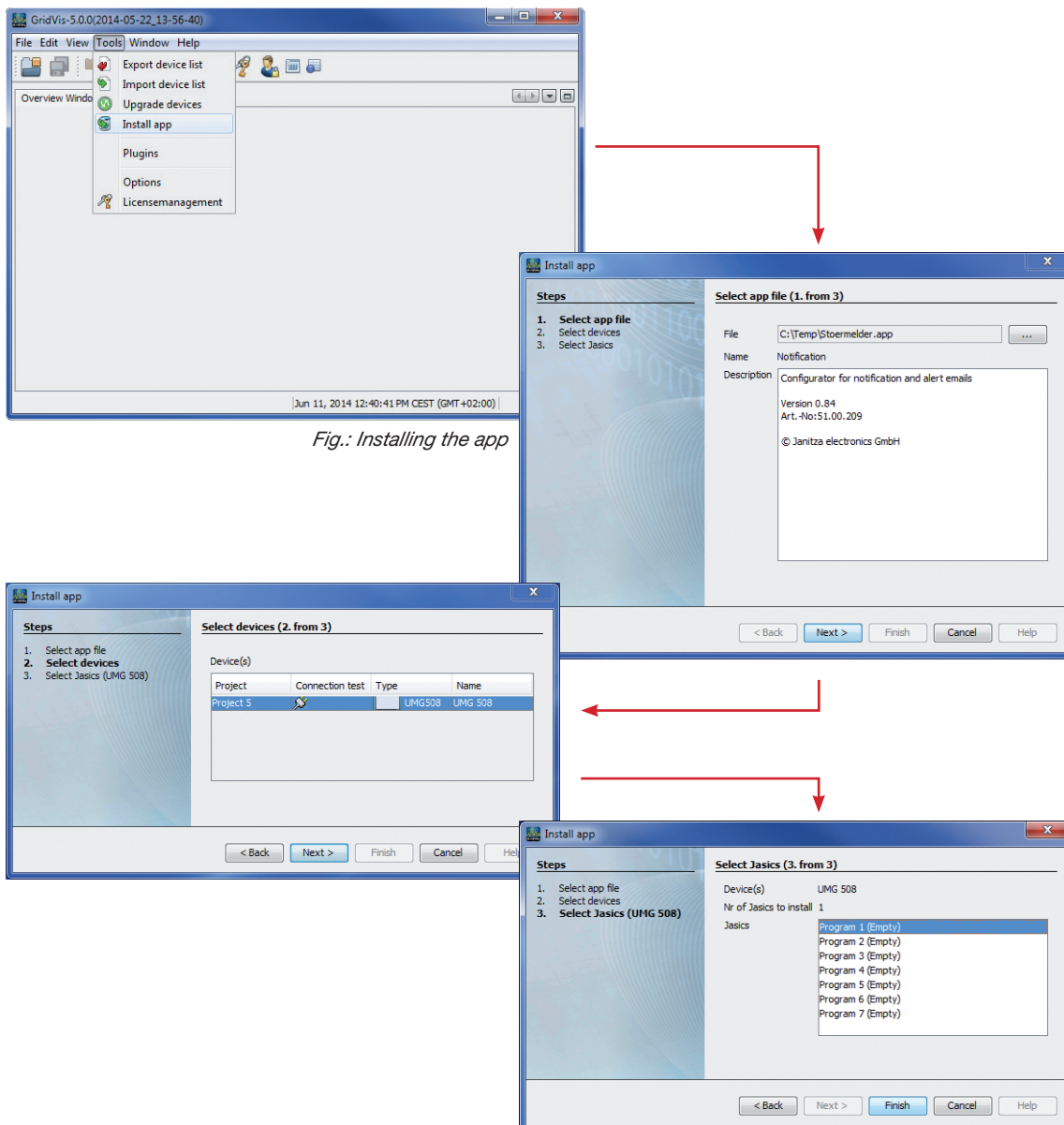
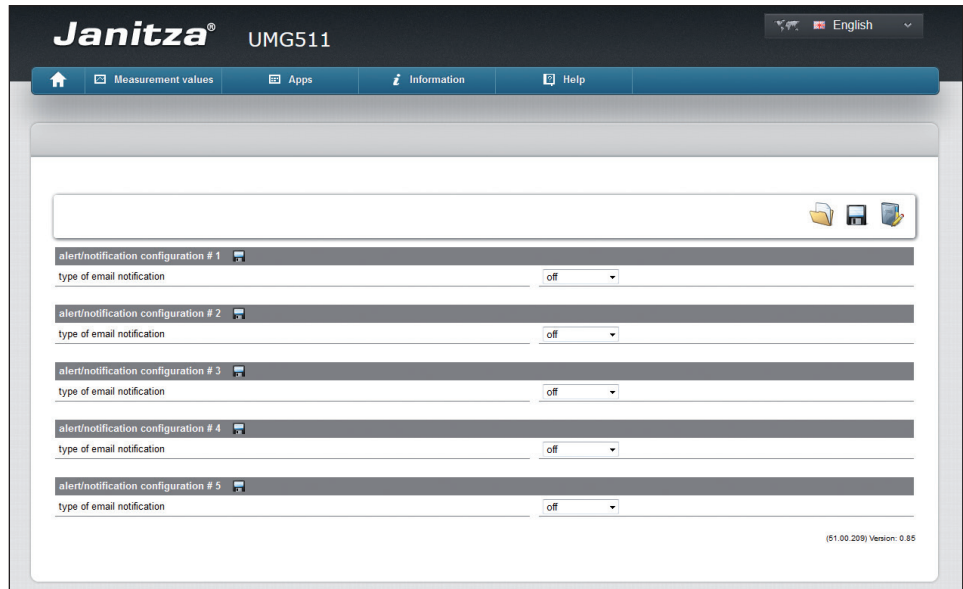


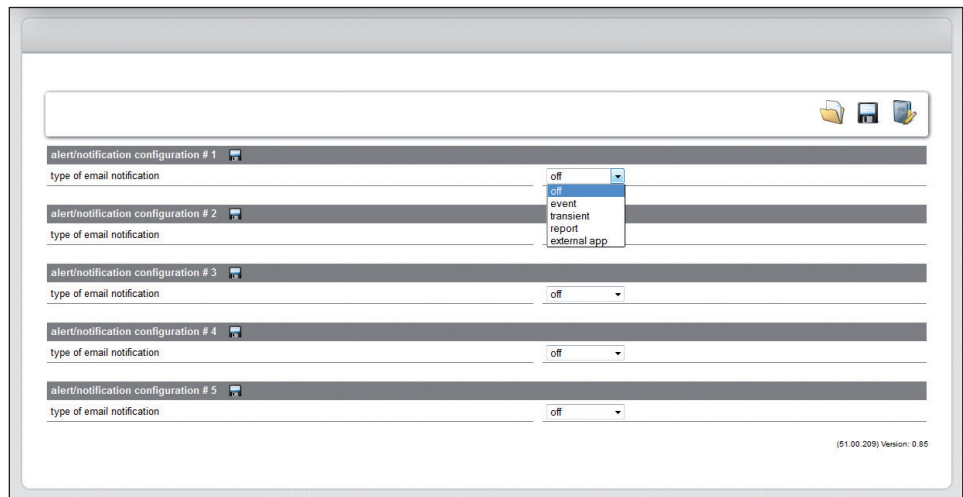
Fig.: Installing the app

Configuration menu

The notification app allows you to create up to five configurations for your alarms and notifications.



Initially, the following types are available to you for each configuration:



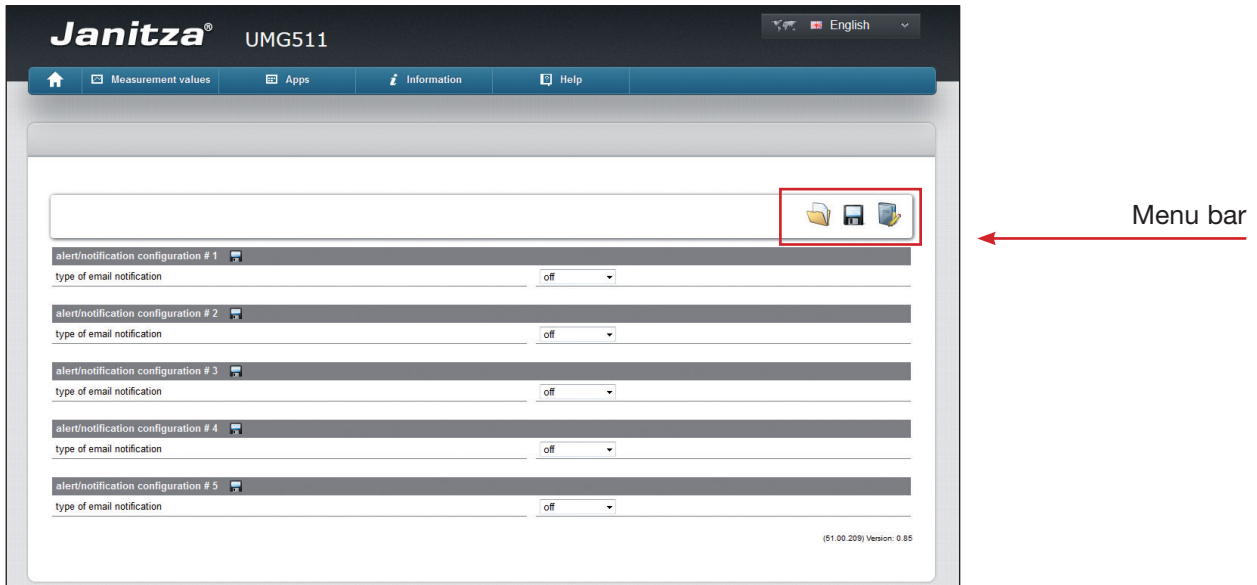
Overview




The following types are available for each configuration:

- Deactivated
 - Do not send e-mails
- Event
 - Alarm issued when event occurs
 - Overvoltage, undervoltage, power failure, overcurrent
 - Report generated when event has concluded
 - Report is freely configurable
 - A freely editable text can be created stating the start time, end time, duration, minimum value, maximum value, phase, device name, and event type.
 - A graph can be attached (except for UMG 512)
- Transients
 - Alarm issued when transient occurs, via:
 - E-mail
 - Digital output
 - Report generated when transient has concluded
 - Report is freely configurable
 - A freely editable text can be created stating the start time, end time, duration, minimum value, maximum value, phase, device name, and event type.
 - A graph can be attached (except for UMG 512)
- Energy report
 - Report on energy consumption
 - Daily, weekly, monthly
 - A graph can be attached (except for UMG 512)
- External application
 - It is possible to import other installed applications into the notification app. However, this requires special adaptations at extra cost.

Menu bar


The menu bar consists of three icons:



- Folder 
 - Load the settings from the file (/html/stoermeldeconfig.conf)
- Diskette 
 - Save the settings to a file on the device (/html/stoermeldeconfig.conf)
 - All settings are saved, so they can be used immediately.
- Address book 
 - Mail server configuration

Mail server configuration

The application requires a mail server to send the e-mails. Communications with the server must not be encrypted by SSL, as the measuring devices do not support this functionality.

- You can open the configuration menu by clicking the address book icon ().

login mailserver	
mail server:	<input type="text"/>
authentication method	no authentication <input type="button" value="v"/>
from:	<input type="text"/>
test recipient:	<input type="text"/>
<input type="button" value="save configuration"/>	<input type="button" value="Test"/> <input type="button" value="abort"/>

- Enter the required information into the configuration dialog.
- You can enter an e-mail address under Test recipient to test the send functionality. To do so, click the "Test" button. "Apply" saves your entries.

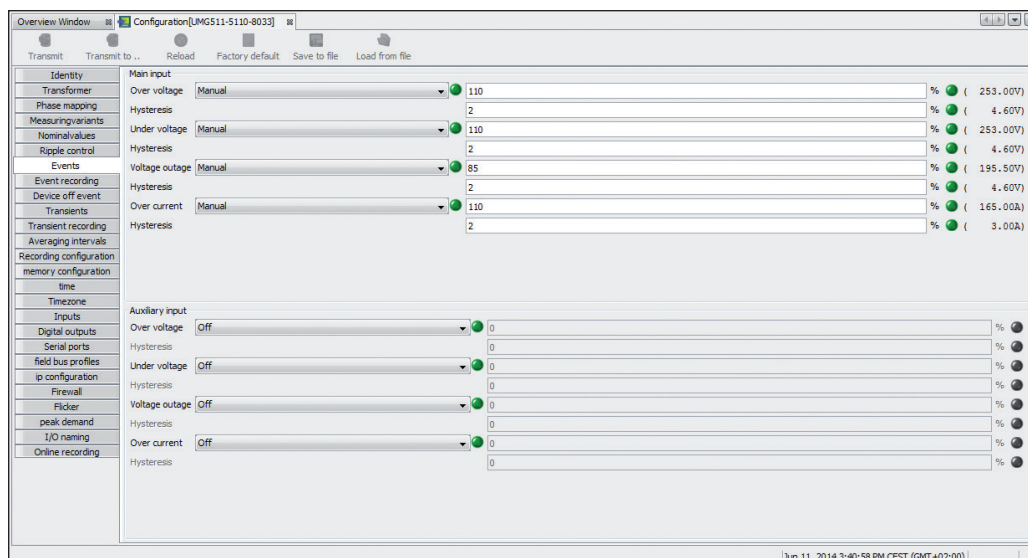
Event configuration

- At the start of event configuration, you have a choice between "immediate notification on event" and "event report".
- It is possible to select both options.

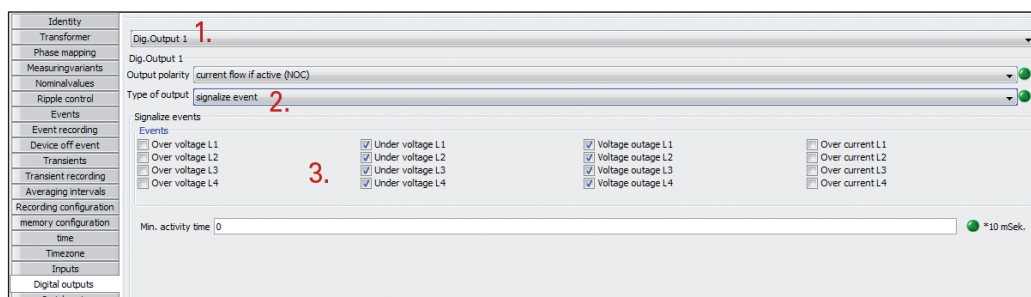
type of email notification	event ▼
immediate notification on event	<input type="checkbox"/>
event report	<input type="checkbox"/>
to:	<input type="text"/>

Event alarm


- "immediate notification on event" sends an e-mail as soon as an event such as overvoltage, undervoltage, power failure (provided the device and mail server are still operational) or overcurrent occurs. Device detection must be configured in GridVis:



- In the device configuration under the "Events" tab, you can set the limit values for an event.
- Under the "Digital outputs" tab you can configure alarms for when an event occurs.



1. First select the desired digital output that you want to report an event.
The notification app will query the digital output later on.
 2. Then set the output type to "event notification".
 3. Select which event the digital output should report.
- Then transfer the configuration to the device and return to the device homepage:


alert/notification configuration # 1 	
type of email notification	event <input type="text"/>
immediate notification on event	<input checked="" type="checkbox"/>
trigger	digital output 1 <input type="text"/>
subject of alarm mail	<input type="text"/>
event report	<input type="checkbox"/>
to:	<input type="text"/>

- Set the digital output selected in GridVis for "Trigger". Only one digital output can be selected per configuration table.
- Enter a subject. This text is carried over into the e-mail as the subject. Then also enter the recipient's e-mail address.

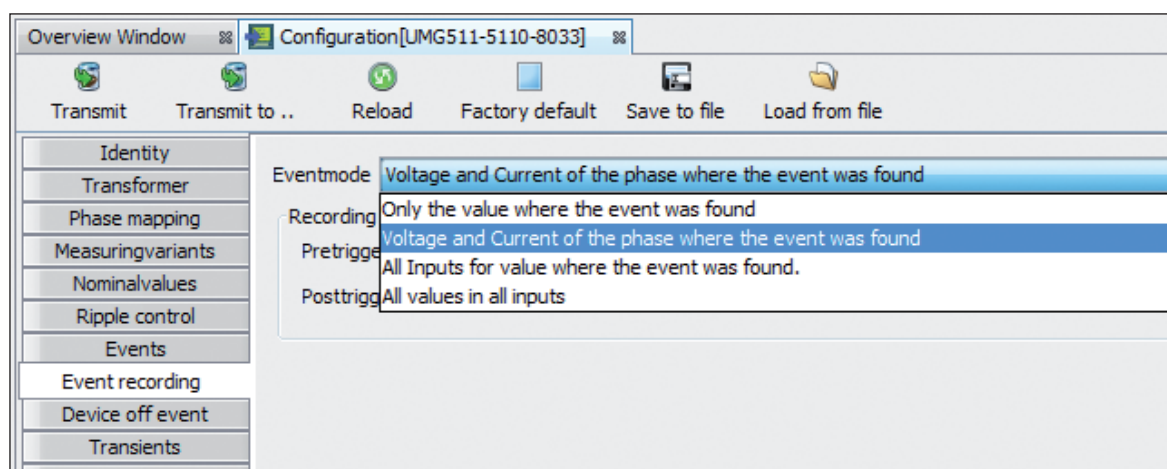


Only the digital outputs 1 and 2 are supported. Please use the outputs 1 and/or 2 if the device has multiple outputs!

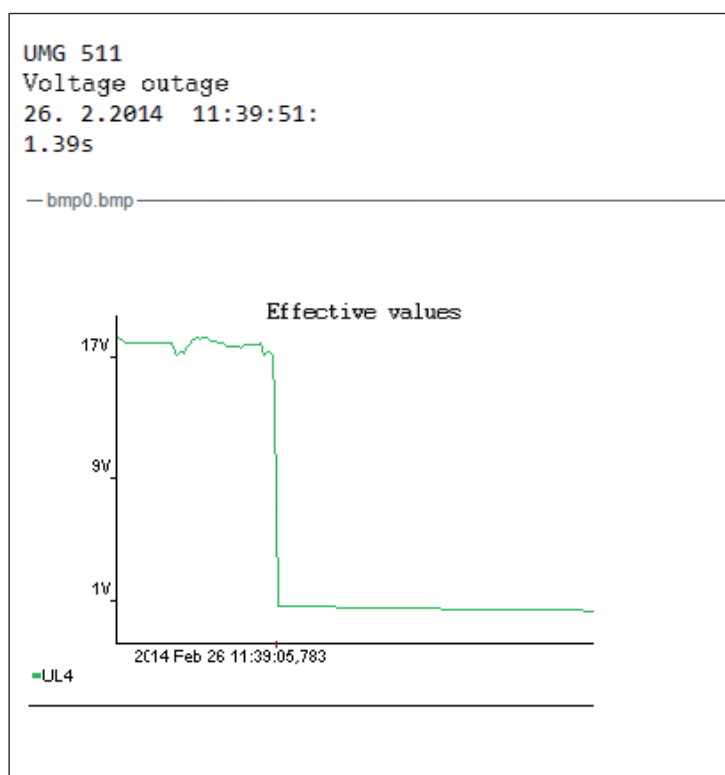
Event report

alert/notification configuration # 1 	
type of email notification	event <input type="text"/>
immediate notification on event	<input type="checkbox"/>
event report	<input checked="" type="checkbox"/>
to:	<input type="text"/>
subject:	<input type="text"/>
content:	<div style="border: 1px solid gray; height: 150px; width: 100%;"></div>
tags	
common:	
<input type="text" value="device name"/> <input type="text" value="new line"/>	
event specific:	
<input type="text" value="date of start"/> <input type="text" value="date of end"/> <input type="text" value="time of start"/>	
<input type="text" value="time of end"/> <input type="text" value="duration"/> <input type="text" value="phase"/>	
<input type="text" value="type german"/> <input type="text" value="type english"/>	
<input type="text" value="minimum value"/> <input type="text" value="maximum value"/>	
attachment	

- If you have not activated the event alarm and the field "Recipient" is still empty, enter an e-mail address there.
- The subject of the report will be carried over and used as the e-mail subject line
- In the text entry area you can type anything you want. However, remember there is a **limit of 250 characters for the e-mail** (not in the text field itself). You can use the buttons on the side to insert placeholders, which will later be replaced with the actual values when the event is analysed.
- If desired, you can also specify to attach a graph of the event to the e-mail (except for UMG 512).
- All of the logged phases of the event are always sent in the e-mail. You can set what these are in the device configuration in GridVis, in the menu item "Event logging".



Example report



Transient alarm

type of email notification	transient ▼
alarm output type	E-Mail: <input checked="" type="checkbox"/> digital output : <input checked="" type="checkbox"/>
digital output	digital output 2 ▼
subject of alarm mail	<input type="text"/>
to:	<input type="text"/>

- Transients can be reported by the notification app by e-mail and via digital outputs.
- Make sure you do not select the same digital output you are using for the event alarm. Otherwise that will also be erroneously triggered at the same time. Configuration is the same as for event configuration (cf. chapter "Event configuration").

Energy report

type of email notification	report ▼
trigger	daily ▼
to:	daily weekly monthly
subject:	<input type="text"/>
attachment	graph ▼

- The energy report sends you the energy profile for the period you selected.
- If you want the energy report to be sent each day, select the one hour setting.
- The weekly and monthly settings only show the value for each day.

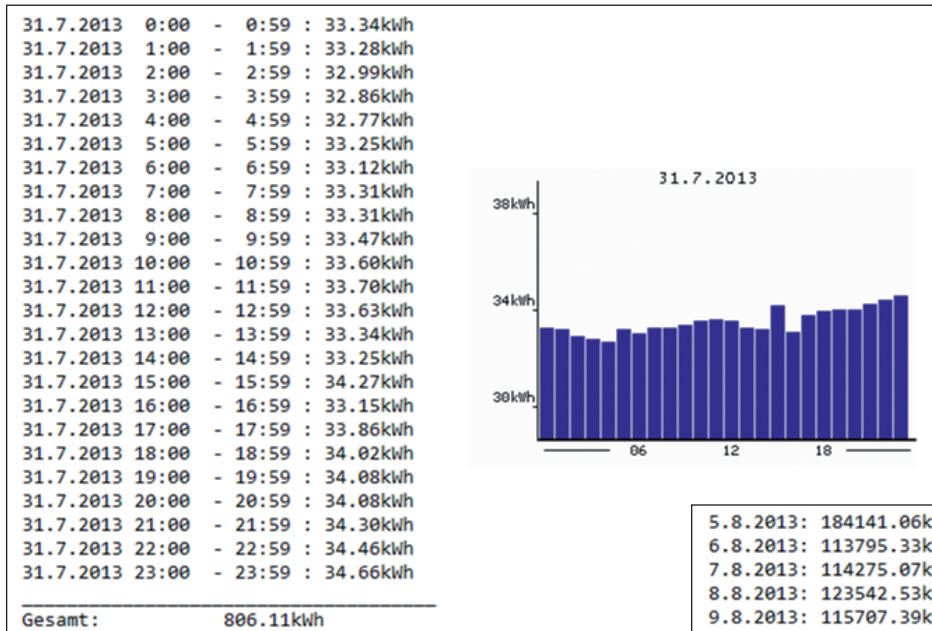


Fig.: "Daily" trigger

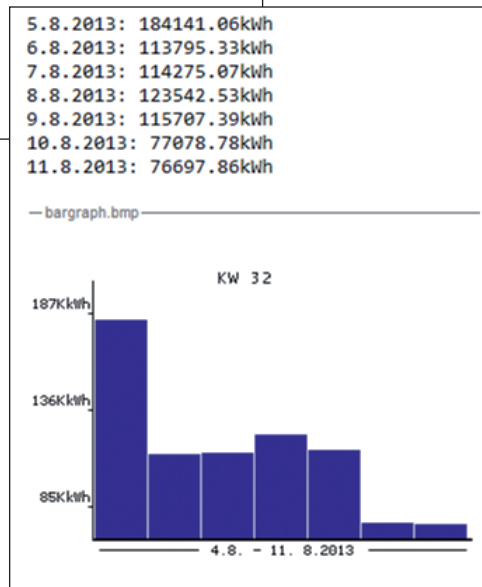


Fig.: "Weekly" trigger