



# index

## index

<u>Index</u>	P01
<u>Company Profile</u>	P02
<u>Stamped Parts</u>	P04
<u>Extruded Parts</u>	P16
<u>PGA/BGA</u>	P19
<u>Clips</u>	P22
<u>Ceramics</u>	P25
<u>Fan Guards</u>	P26
<u>Handle</u>	P27
<u>Hex Standoffs</u>	P28

**Jaro Thermal**

We Keep the World Cool™

# ABOUT JARO THERMAL

# We Keep the

## Mission Statement

Jaro Thermal is a recognized leader in the electronic thermal management field. For more than 34 years, Jaro has developed a broad range of unique, cutting-edge cooling technologies designed to extend the life of electronic components for many different industries. Our commitment to product, people and technological innovation will advance our quest for superior products and services to deliver the quality our customers require.



[www.jarothermal.com/](http://www.jarothermal.com/)

### UNITED STATES

JARO THERMAL  
6600 Park of Commerce Blvd  
Boca Raton, Florida 33487  
561-241-6700 ph  
561-241-3328 fx

### TAIWAN

JARO THERMAL  
6F-5, Bo Ai 2 Rd., Zuoying,  
Kaohsiung, Taiwan 81358  
886-7-550-7020 ph  
886-7-550-7542 fx

# World Cool™

Globalization – Recognized and distributed worldwide

Jaro Thermal now develops and manufactures on two continents. Jaro's wide range of products includes heatsinks, CPU cooler modules, blower fans, DC axial flow fans, and AC axial flow fans. Featuring award winning design, Jaro Thermal's products meet the rigorous requirements of our customers and users, and are easily modified for varying applications and specifications.

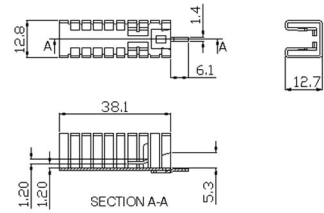
Jaro's talented customer oriented service has help the company to expand its distribution based from Taiwan, China, Canada, and The United States. The company's sales revenue has grown steadily as a growing clientele has chosen Jaro. JARO Thermal has established long term relationships with world-famous brands like Panasonic, Harman, Intel, General Motors, Chrysler, Toyota, Jabil, and others.



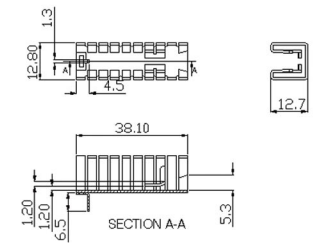
# Stamped Parts



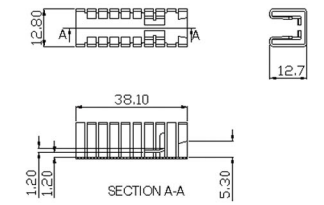
PART NO :	JT-ALU-0004-001
MATERIAL :	AL5052 T=0.8mm
FINISH :	BLACK ANODIZED
REMARK :	



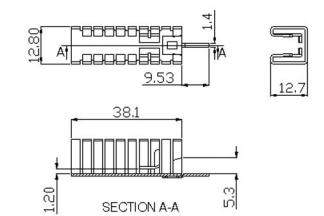
PART NO :	JT-ALU-0004-002
MATERIAL :	AL5052 T=0.8mm
FINISH :	BLACK ANODIZED
REMARK :	



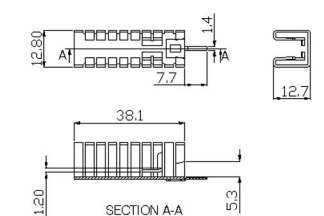
PART NO :	JT-ALU-0004-003
MATERIAL :	AL5052 T=0.8mm
FINISH :	BLACK ANODIZED
REMARK :	



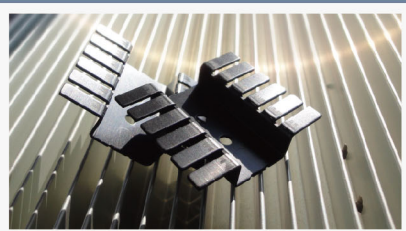
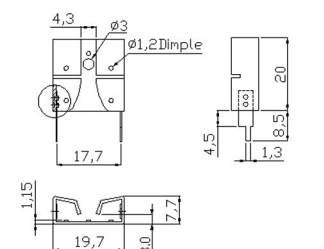
PART NO :	JT-ALU-0004-005
MATERIAL :	AL5052 T=0.8mm
FINISH :	BLACK ANODIZED
REMARK :	




PART NO :	JT-ALU-0004-006
MATERIAL :	AL5052 T=0.8mm
FINISH :	BLACK ANODIZED
REMARK :	



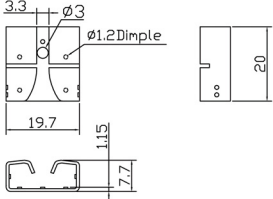

PART NO :	JT-ALU-0017-001
MATERIAL :	AL5052 T=0.8mm
FINISH :	BLACK ANODIZED
REMARK :	



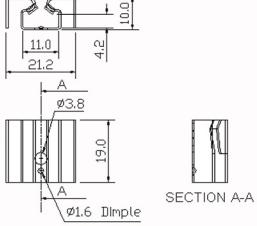

# Stamped Parts



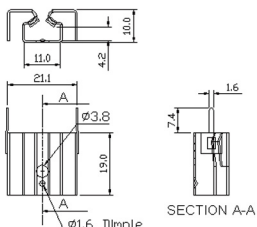

PART NO :	JT-ALU-0018-001
MATERIAL :	AL5052 T=0.8mm
FINISH :	BLACK ANODIZED
REMARK :	

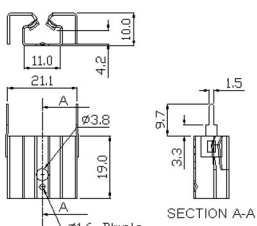

PART NO :	JT-ALU-0019-001
MATERIAL :	AL5052 T=0.8mm
FINISH :	BLACK ANODIZED
REMARK :	

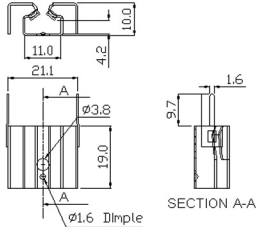
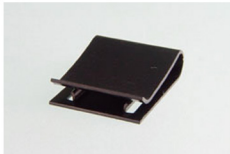
PART NO :	JT-ALU-0019-003
MATERIAL :	AL5052 T=0.8mm
FINISH :	BLACK ANODIZED
REMARK :	

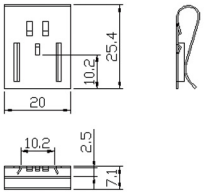
PART NO :	JT-ALU-0019-004
MATERIAL :	AL5052 T=0.8mm
FINISH :	BLACK ANODIZED
REMARK :	

PART NO :	JT-ALU-0019-005
MATERIAL :	AL5052 T=0.8mm
FINISH :	BLACK ANODIZED
REMARK :	

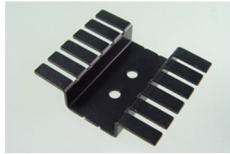
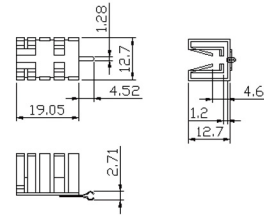
PART NO :	JT-ALU-0021-001
MATERIAL :	AL5052 T=0.8mm
FINISH :	BLACK ANODIZED
REMARK :	



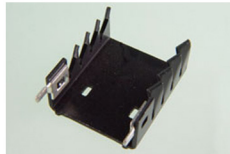
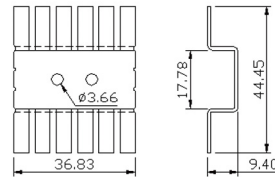

# Stamped Parts



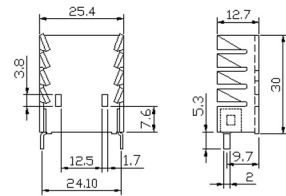
PART NO :	JT-ALU-0026-001
MATERIAL :	AL5052 T=0.8mm
FINISH :	BLACK ANODIZED
REMARK :	



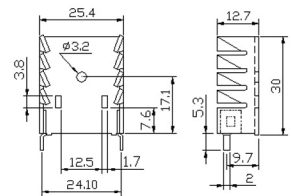
PART NO :	JT-ALU-0034-001
MATERIAL :	AL1050 T=1.0mm
FINISH :	BLACK ANODIZED
REMARK :	



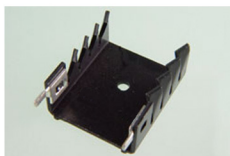
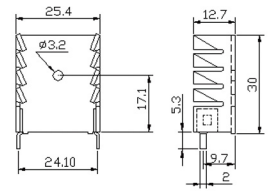
PART NO :	JT-ALU-0096-002
MATERIAL :	AL1050 T=1.2mm
FINISH :	BLACK ANODIZED
REMARK :	FOR CLIP JT-MSH-0014



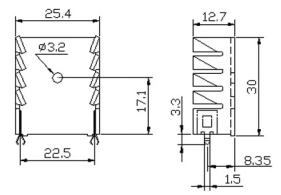
PART NO :	JT-ALU-0096-003
MATERIAL :	AL1050 T=1.2mm
FINISH :	BLACK ANODIZED
REMARK :	FOR CLIP JT-MSH-0011




PART NO :	JT-ALU-0096-004
MATERIAL :	AL1050 T=1.2mm
FINISH :	BLACK ANODIZED
REMARK :	



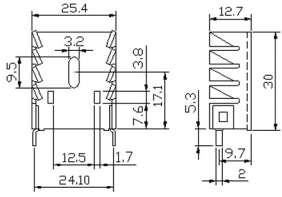
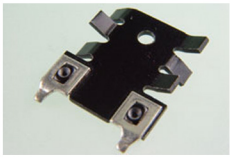
PART NO :	JT-ALU-0096-005
MATERIAL :	AL1050 T=1.2mm
FINISH :	BLACK ANODIZED
REMARK :	



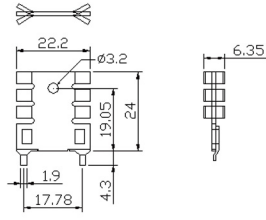

# Stamped Parts



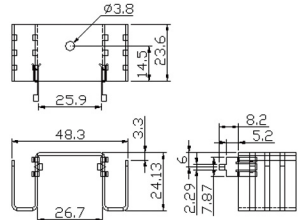

PART NO :	JT-ALU-0096-006
MATERIAL :	AL1050 T=1.2mm
FINISH :	BLACK ANODIZED
REMARK :	

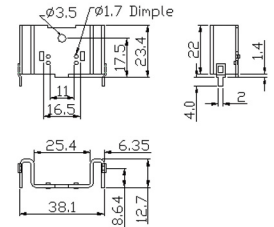

PART NO :	JT-ALU-0115-001
MATERIAL :	AL1050 T=1.2mm
FINISH :	BLACK ANODIZED
REMARK :	

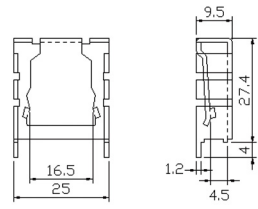

PART NO :	JT-ALU-0134-001
MATERIAL :	AL1050 T=1.2mm
FINISH :	BLACK ANODIZED
REMARK :	

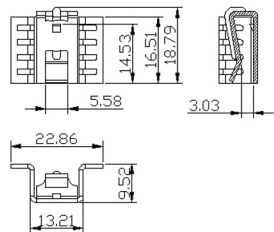
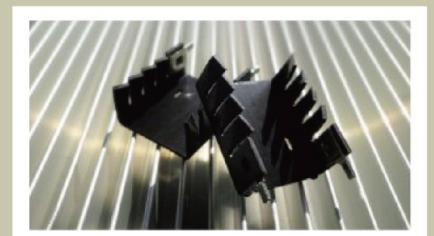
PART NO :	JT-ALU-0140-001
MATERIAL :	AL1050 T=1.2mm
FINISH :	BLACK ANODIZED
REMARK :	

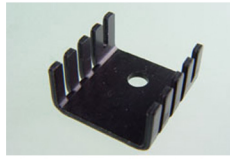
PART NO :	JT-ALU-0214-001
MATERIAL :	AL5052 T=1.2mm
FINISH :	BLACK ANODIZED
REMARK :	

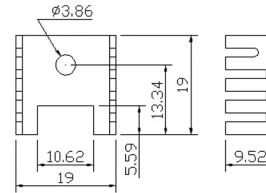
PART NO :	JT-ALU-0250-001
MATERIAL :	AL1050 T=1.0mm
FINISH :	BLACK ANODIZED
REMARK :	

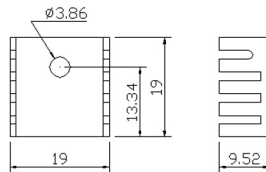
# Stamped Parts



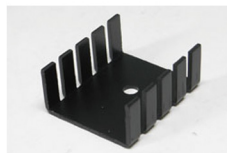
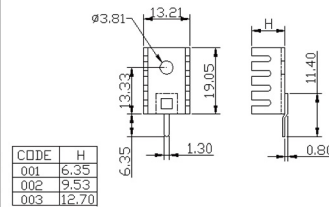
PART NO :	JT-T220-0022-001
MATERIAL :	AL1050 T=1.2mm
FINISH :	BLACK ANODIZED
REMARK :	



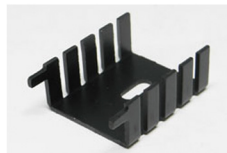
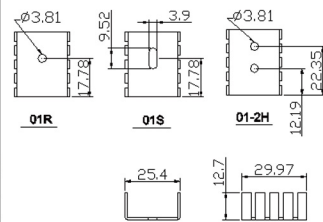
PART NO :	JT-T220-0022-002
MATERIAL :	AL1050 T=1.2mm
FINISH :	BLACK ANODIZED
REMARK :	



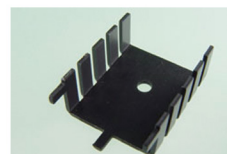
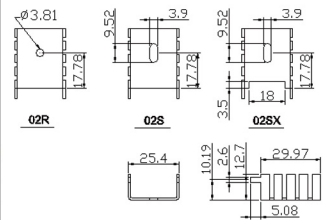
PART NO :	JT-T220-0037
MATERIAL :	AL1050 T=1.2mm
FINISH :	BLACK ANODIZED
REMARK :	



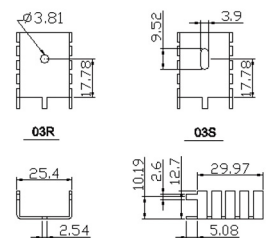
PART NO :	JT-T220-0039
MATERIAL :	AL1050 T=1.2mm
FINISH :	BLACK ANODIZED
REMARK :	



PART NO :	JT-T220-0039-02
MATERIAL :	AL1050 T=1.2mm
FINISH :	BLACK ANODIZED
REMARK :	"-C"1100&TIN PLATED

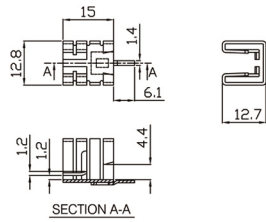


PART NO :	JT-T220-0039-03
MATERIAL :	AL1050 T=1.2mm
FINISH :	BLACK ANODIZED
REMARK :	"-C"1100&TIN PLATED

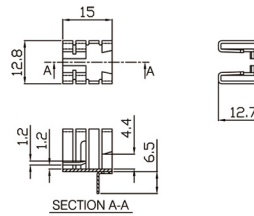




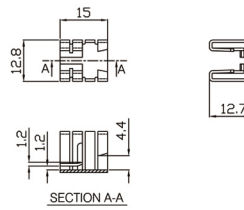
# Stamped Parts



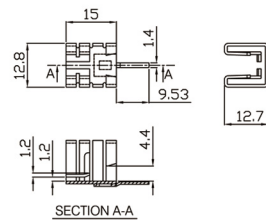
PART NO :	JT-T220-0040-01
MATERIAL :	AL5052 T=0.8mm
FINISH :	BLACK ANODIZED
REMARK :	



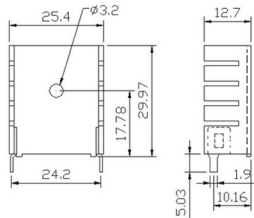
PART NO :	JT-T220-0040-02
MATERIAL :	AL5052 T=0.8mm
FINISH :	BLACK ANODIZED
REMARK :	



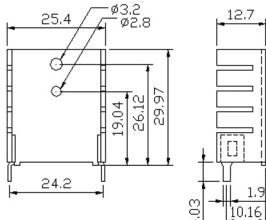
PART NO :	JT-T220-0040-03
MATERIAL :	AL5052 T=0.8mm
FINISH :	BLACK ANODIZED
REMARK :	



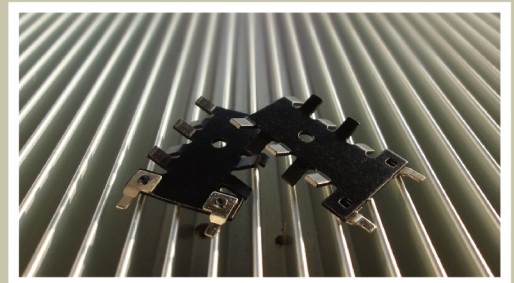
PART NO :	JT-T220-0040-04
MATERIAL :	AL5052 T=0.8mm
FINISH :	BLACK ANODIZED
REMARK :	



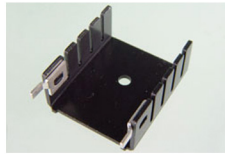
PART NO :	JT-T220-0042-002
MATERIAL :	AL1050 T=1.2mm
FINISH :	BLACK ANODIZED
REMARK :	



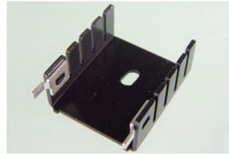
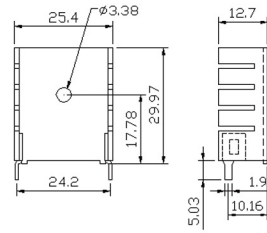
PART NO :	JT-T220-0042-003
MATERIAL :	AL1050 T=1.2mm
FINISH :	BLACK ANODIZED
REMARK :	



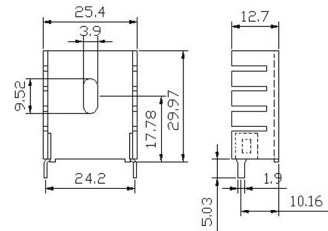
# Stamped Parts



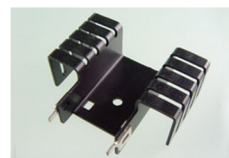
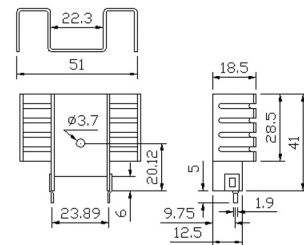
PART NO :	JT-T220-0042-006
MATERIAL :	AL1050 T=1.2mm
FINISH :	BLACK ANODIZED
REMARK :	



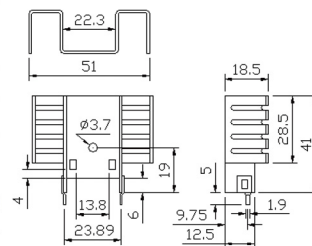
PART NO :	JT-T220-0042-007
MATERIAL :	AL 1050 T=1.2mm
FINISH :	BLACK ANODIZED
REMARK :	



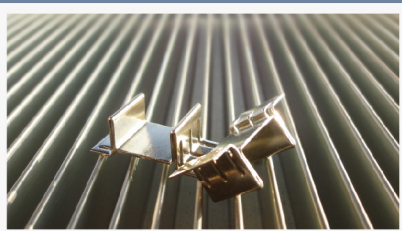
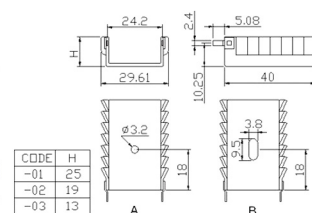
PART NO :	JT-T220-0052-01
MATERIAL :	AL 1050 T=1.2mm
FINISH :	BLACK ANODIZED
REMARK :	



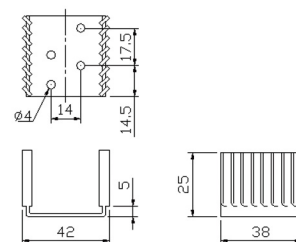
PART NO :	JT-T220-0052-02
MATERIAL :	AL 1050 T=1.2mm
FINISH :	BLACK ANODIZED
REMARK :	FOR CLIP JT-MSH-0006




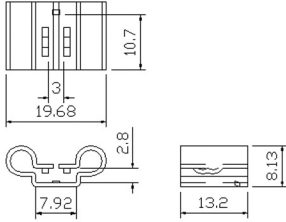
PART NO :	JT-T220-0053
MATERIAL :	AL1050 T=1.2mm
FINISH :	BLACK ANODIZED
REMARK :	




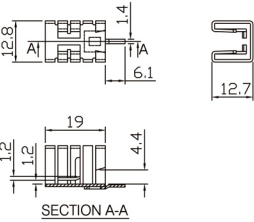
PART NO :	JT-T220-0054-04
MATERIAL :	AL 1050 T=1.5mm
FINISH :	BLACK ANODIZED
REMARK :	




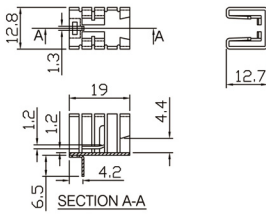
# Stamped Parts


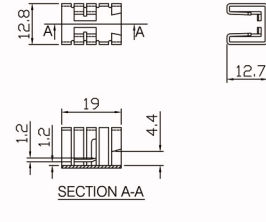
PART NO :	JT-T220-0058
MATERIAL :	AL5052 T=0.8mm
FINISH :	BLACK ANODIZED
REMARK :	


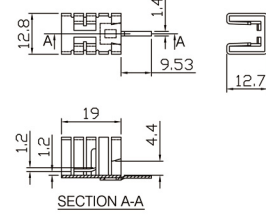
PART NO :	JT-T220-0060-01
MATERIAL :	AL5052 T=0.8mm
FINISH :	BLACK ANODIZED
REMARK :	


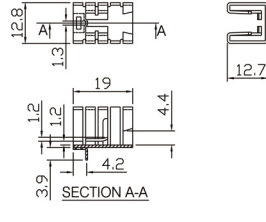
PART NO :	JT-T220-0060-02
MATERIAL :	AL5052 T=0.8mm
FINISH :	BLACK ANODIZED
REMARK :	

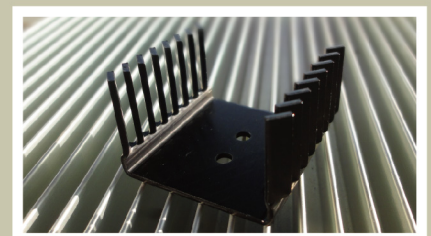
PART NO :	JT-T220-0060-03
MATERIAL :	AL5052 T=0.8mm
FINISH :	BLACK ANODIZED
REMARK :	

PART NO :	JT-T220-0060-04
MATERIAL :	AL5052 T=0.8mm
FINISH :	BLACK ANODIZED
REMARK :	

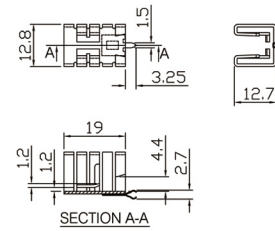
PART NO :	JT-T220-0060-05
MATERIAL :	AL5052 T=0.8mm
FINISH :	BLACK ANODIZED
REMARK :	



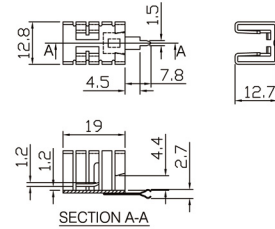
# Stamped Parts



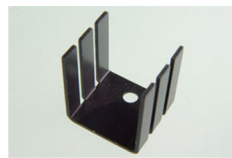
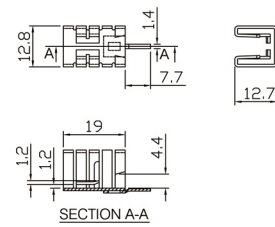
PART NO :	JT-T220-0060-06
MATERIAL :	AL5052 T=0.8mm
FINISH :	BLACK ANODIZED
REMARK :	



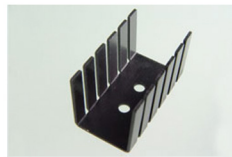
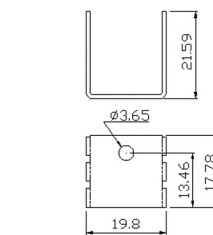
PART NO :	JT-T220-0060-07
MATERIAL :	AL5052 T=0.8mm
FINISH :	BLACK ANODIZED
REMARK :	



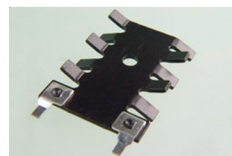
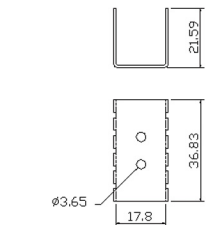
PART NO :	JT-T220-0060-08
MATERIAL :	AL5052 T=0.8mm
FINISH :	BLACK ANODIZED
REMARK :	



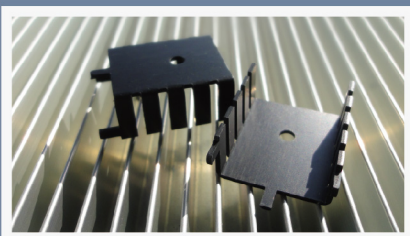
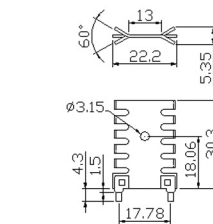
PART NO :	JT-T220-0061
MATERIAL :	AL1050 T=1.0mm
FINISH :	BLACK ANODIZED
REMARK :	



PART NO :	JT-T220-0062
MATERIAL :	AL1050 T=1.0mm
FINISH :	BLACK ANODIZED
REMARK :	



PART NO :	JT-T220-0063
MATERIAL :	AL1050 T=1.0mm
FINISH :	BLACK ANODIZED
REMARK :	

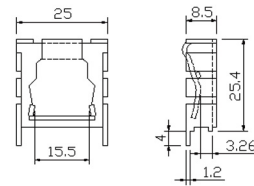




# Stamped Parts



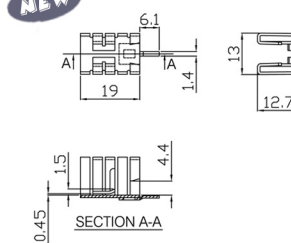
PART NO :	JT-T220-0085-04 A
MATERIAL :	AL5052 T=1.2mm
FINISH :	BLACK ANODIZED
REMARK :	



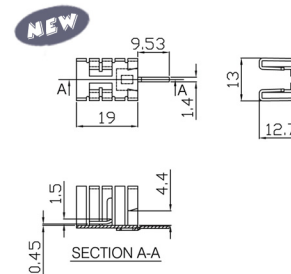
A	Black Anodized
T	Tin Plated
C	Clean



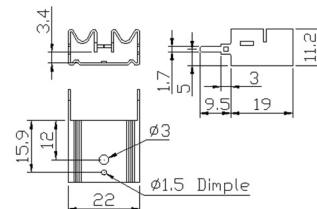
PART NO :	JT-T220-0105-01
MATERIAL :	AL5052 T=0.8mm
FINISH :	BLACK ANODIZED
REMARK :	



PART NO :	JT-T220-0105-04
MATERIAL :	AL5052 T=0.8mm
FINISH :	BLACK ANODIZED
REMARK :	



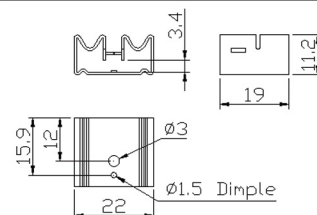
PART NO :	JT-T220-0228-01 A
MATERIAL :	AL5052 T=0.8mm
FINISH :	BLACK ANODIZED
REMARK :	



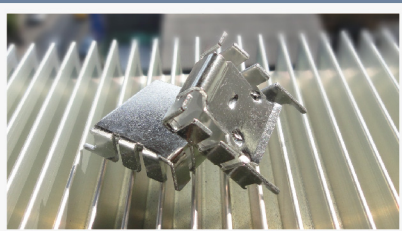
A	Black Anodized
T	Tin Plated
C	Clean



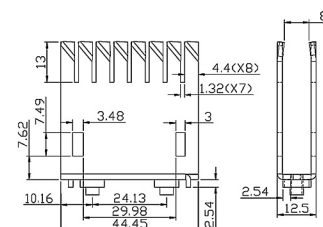
PART NO :	JT-T220-0229-01 A
MATERIAL :	AL5052 T=0.8mm
FINISH :	BLACK ANODIZED
REMARK :	



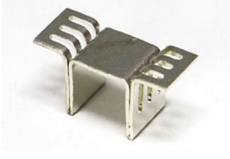
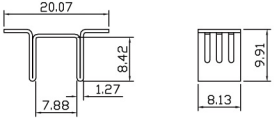
A	Black Anodized
T	Tin Plated
C	Clean




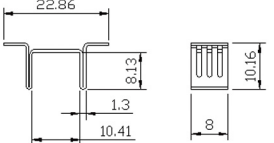
PART NO :	JT-T218-0007
MATERIAL :	AL1050 T=1.6mm
FINISH :	BLACK ANODIZED
REMARK :	FOR CLIP JT-MSH-0008



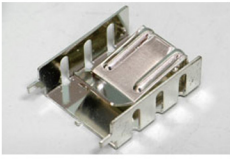
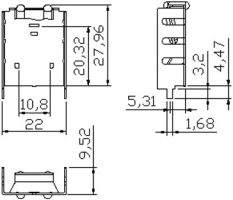
# Stamped Parts

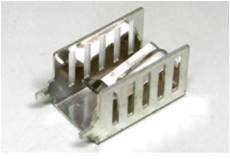
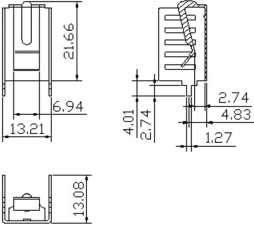
PART NO :	JT-CUS-0013-002	PART NO:	PACKING TYPE
MATERIAL :	C1100 T=0.6mm	JT-CUS-0013-002	BULK PACKING
FINISH :	TIN PLATED	JT-CUS-0013-002(T/R)	TAPE AND REEL PACKING
REMARK :			

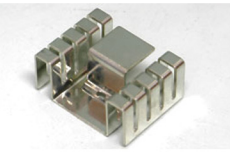
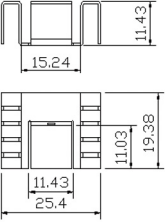
PART NO :	JT-CUS-0052-001	PART NO:	PACKING TYPE
MATERIAL :	C1100 T=0.6mm	JT-CUS-0052-001	BULK PACKING
FINISH :	TIN PLATED	JT-CUS-0052-001(T/R)	TAPE AND REEL PACKING
REMARK :			


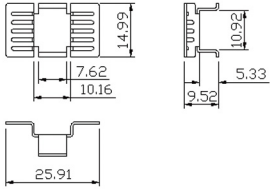
PART NO :	JT-CUS-0053-001	PART NO:	PACKING TYPE
MATERIAL :	C1100 T=0.6mm	JT-CUS-0053-001	BULK PACKING
FINISH :	TIN PLATED	JT-CUS-0053-001(T/R)	TAPE AND REEL PACKING
REMARK :			

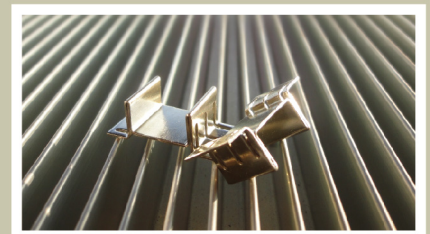
PART NO :	JT-CUS-0054-001	PART NO:	PACKING TYPE
MATERIAL :	C1100 T=0.6mm	JT-CUS-0054-001	BULK PACKING
FINISH :	TIN PLATED	JT-CUS-0054-001(T/R)	TAPE AND REEL PACKING
REMARK :			

PART NO :	JT-CUS-0055-001	PART NO:	PACKING TYPE
MATERIAL :	C1100 T=0.6mm	JT-CUS-0055-001	BULK PACKING
FINISH :	TIN PLATED	JT-CUS-0055-001(T/R)	TAPE AND REEL PACKING
REMARK :			

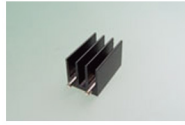
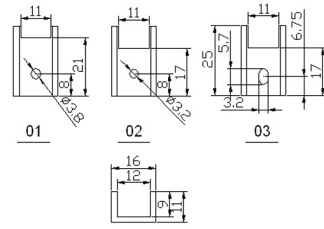
PART NO :	JT-CUS-0056-001	PART NO:	PACKING TYPE
MATERIAL :	C1100 T=0.6mm	JT-CUS-0056-001	BULK PACKING
FINISH :	TIN PLATED	JT-CUS-0056-001(T/R)	TAPE AND REEL PACKING
REMARK :			



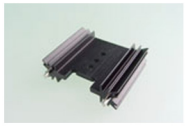
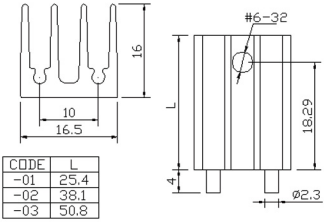
# Extruded Parts



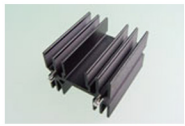
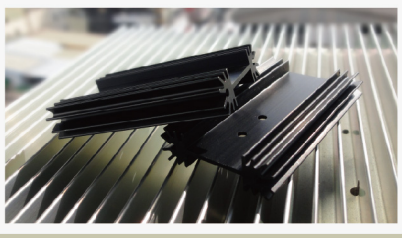
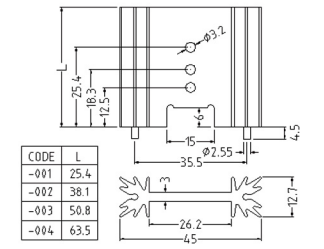
PART NO :	JT-05-0525
MATERIAL :	AL 6063-T5
FINISH :	BLACK ANODIZED
REMARK :	



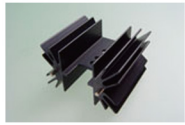
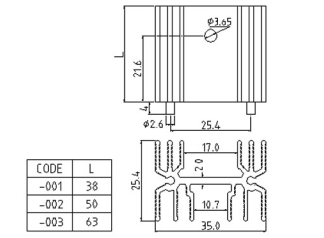
PART NO :	JT-05-0530
MATERIAL :	AL 6063-T5
FINISH :	BLACK ANODIZED
REMARK :	



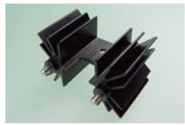
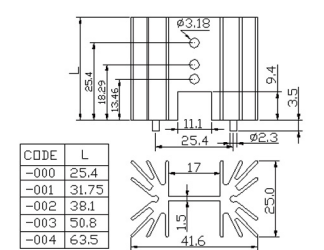
PART NO :	JT-ALU-0035
MATERIAL :	AL 6063-T5
FINISH :	BLACK ANODIZED
REMARK :	



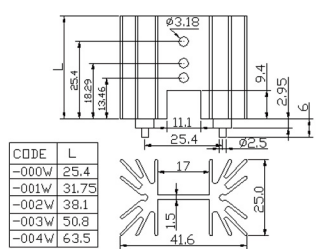
PART NO :	JT-ALU-0036
MATERIAL :	AL 6063-T5
FINISH :	BLACK ANODIZED
REMARK :	



PART NO :	JT-T218-0001
MATERIAL :	AL 6063-T5
FINISH :	BLACK ANODIZED
REMARK :	

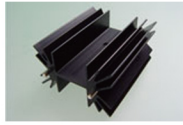


PART NO :	JT-T218-0001W
MATERIAL :	AL 6063-T5
FINISH :	BLACK ANODIZED
REMARK :	W-WASHER

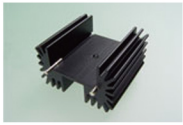
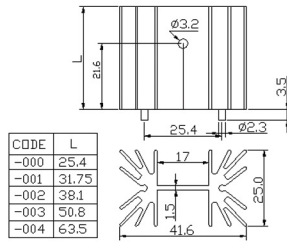




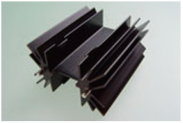
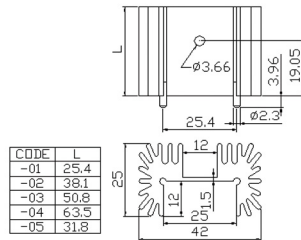
# Extruded Parts



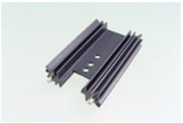
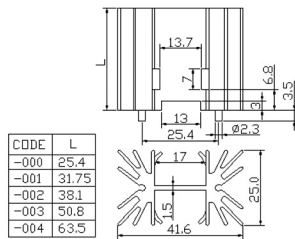
PART NO :	JT-T218-0002
MATERIAL :	AL 6063-T5
FINISH :	BLACK ANODIZED
REMARK :	



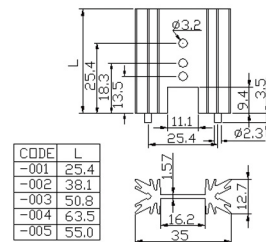
PART NO :	JT-T218-0004
MATERIAL :	AL 6063-T5
FINISH :	BLACK ANODIZED
REMARK :	



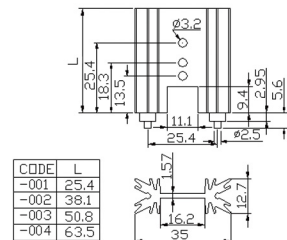
PART NO :	JT-T218-0011
MATERIAL :	AL 6063-T5
FINISH :	BLACK ANODIZED
REMARK :	FOR CLIP JT-MSH-0007



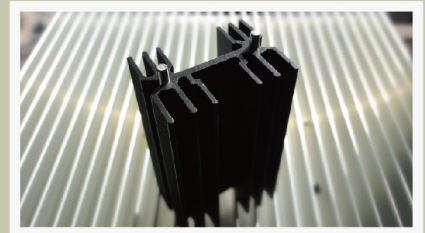
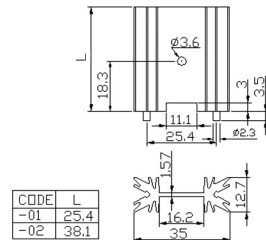
PART NO :	JT-T220-0001
MATERIAL :	AL 6063-T5
FINISH :	BLACK ANODIZED
REMARK :	FOR CLIP JT-MSH-0010



PART NO :	JT-T220-0008
MATERIAL :	AL 6063-T5
FINISH :	BLACK ANODIZED
REMARK :	WITH WASHER



PART NO :	JT-T220-0009
MATERIAL :	AL 6063-T5
FINISH :	BLACK ANODIZED
REMARK :	

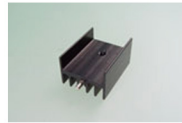
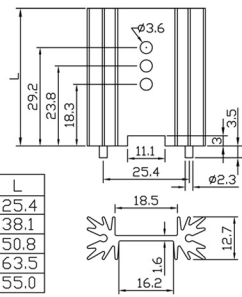


# Extruded Parts



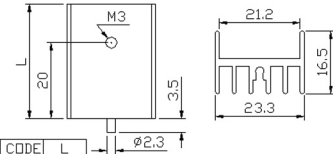
PART NO :	JT-T220-0014
MATERIAL :	AL 6063-T5
FINISH :	BLACK ANODIZED
REMARK :	

CODE	L
-001	25.4
-002	38.1
-003	50.8
-004	63.5
-005	55.0



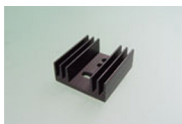
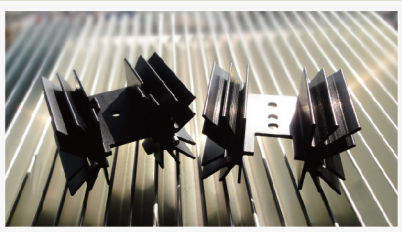
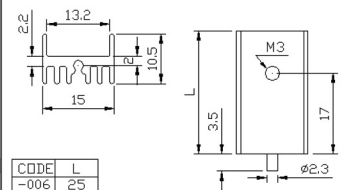
PART NO :	JT-T220-0018
MATERIAL :	AL 6063-T5
FINISH :	BLACK ANODIZED
REMARK :	

CODE	L
-001	25
-002	30
-003	40

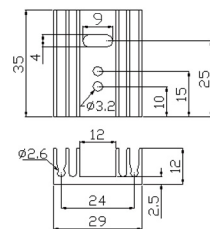


PART NO :	JT-T220-0032
MATERIAL :	AL 6063-T5
FINISH :	BLACK ANODIZED
REMARK :	

CODE	L
-006	25
-007	50

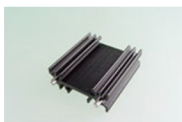
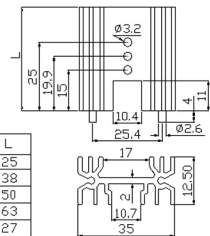


PART NO :	JT-T220-0051-01
MATERIAL :	AL 6063-T5
FINISH :	BLACK ANODIZED
REMARK :	



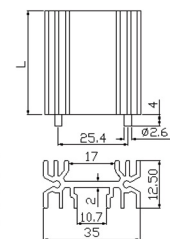
PART NO :	JT-T220-0087
MATERIAL :	AL 6063-T5
FINISH :	BLACK ANODIZED
REMARK :	FOR CLIP JT-FES-0042-001

CODE	L
-001	25
-002	38
-003	50
-004	63
-005	27

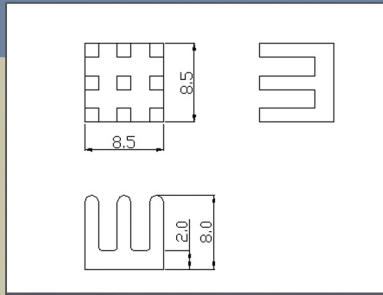


PART NO :	JT-T220-0087
MATERIAL :	AL 6063-T5
FINISH :	BLACK ANODIZED
REMARK :	WITHOUT SLOT & HOLES

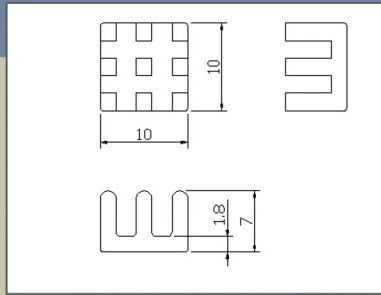
CODE	L
-006	25
-007	38
-008	50
-009	63



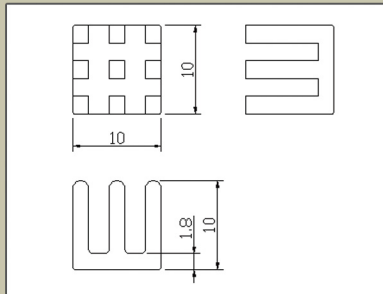
# PGA /BGA



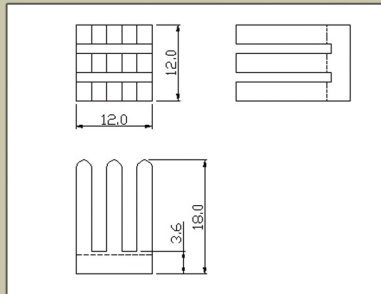
PART NO :	JT-BGA-080808
MATERIAL :	AL6063-T5
FINISH :	BLACK ANODIZED
REMARK :	



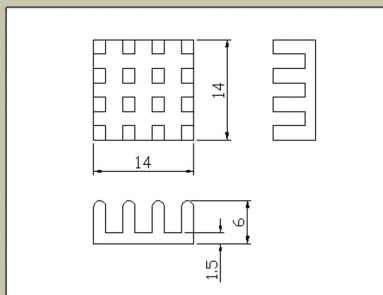
PART NO :	JT-BGA-101007
MATERIAL :	AL6063-T5
FINISH :	BLACK ANODIZED
REMARK :	



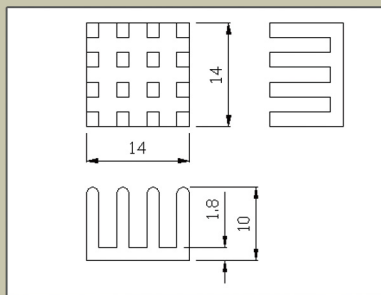
PART NO :	JT-BGA-101010
MATERIAL :	AL6063-T5
FINISH :	BLACK ANODIZED
REMARK :	



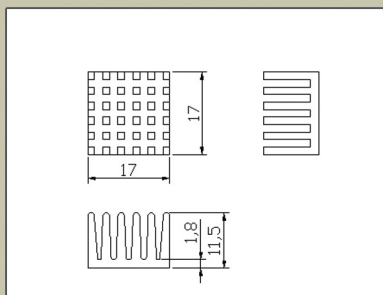
PART NO :	JT-BGA-121218
MATERIAL :	AL6063-T5
FINISH :	BLACK ANODIZED
REMARK :	



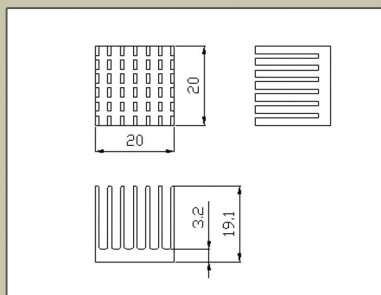
PART NO :	JT-BGA-141406
MATERIAL :	AL6063-T5
FINISH :	BLACK ANODIZED
REMARK :	



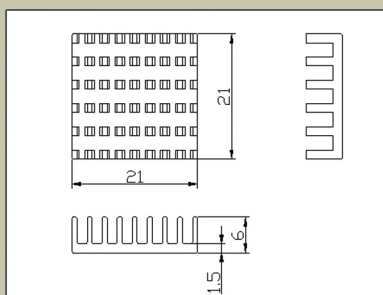
PART NO :	JT-BGA-141410
MATERIAL :	AL6063-T5
FINISH :	BLACK ANODIZED
REMARK :	



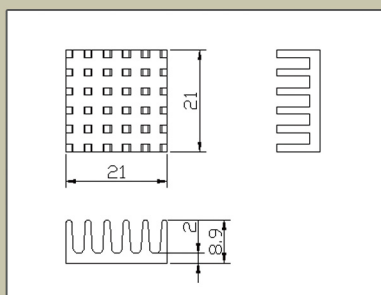
PART NO :	JT-BGA-171711
MATERIAL :	AL6063-T5
FINISH :	BLACK ANODIZED
REMARK :	



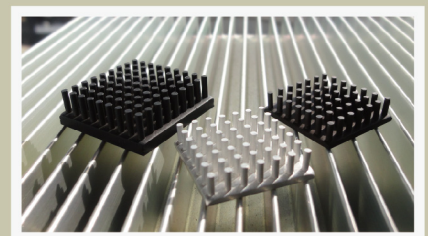
PART NO :	JT-BGA-202019
MATERIAL :	AL6063-T5
FINISH :	BLACK ANODIZED
REMARK :	



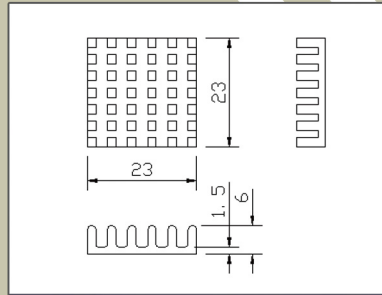
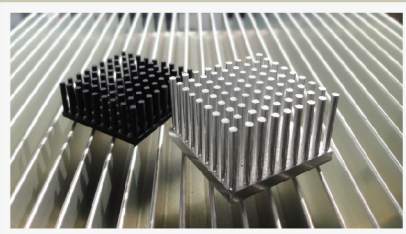
PART NO :	JT-BGA-212106
MATERIAL :	AL6063-T5
FINISH :	BLACK ANODIZED
REMARK :	



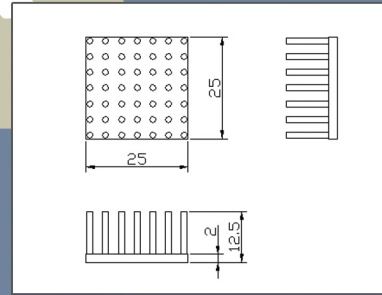
PART NO :	JT-BGA-212108
MATERIAL :	AL6063-T5
FINISH :	BLACK ANODIZED
REMARK :	



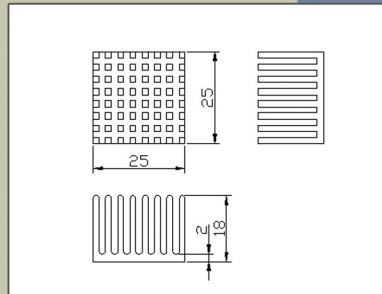
# PGA /BGA



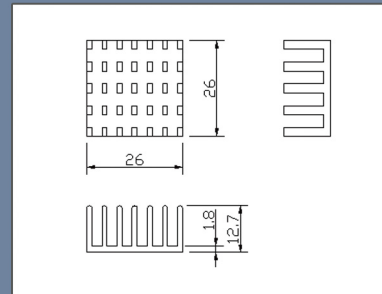
PART NO :	JT-BGA-232306
MATERIAL :	AL6063-T5
FINISH :	BLACK ANODIZED
REMARK :	



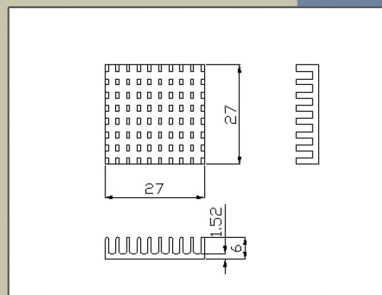
PART NO :	JT-BGA-252512
MATERIAL :	AL6063-T5
FINISH :	BLACK ANODIZED
REMARK :	



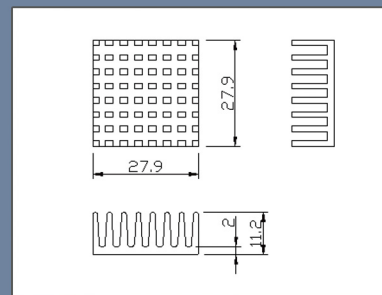
PART NO :	JT-BGA-252518
MATERIAL :	AL6063-T5
FINISH :	BLACK ANODIZED
REMARK :	



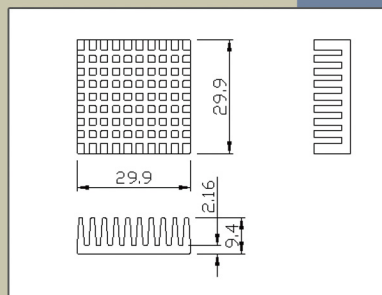
PART NO :	JT-BGA-262612
MATERIAL :	AL6063-T5
FINISH :	BLACK ANODIZED
REMARK :	



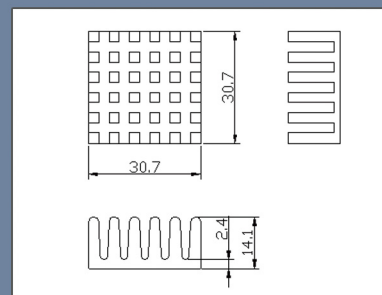
PART NO :	JT-BGA-272706
MATERIAL :	AL6063-T5
FINISH :	BLACK ANODIZED
REMARK :	



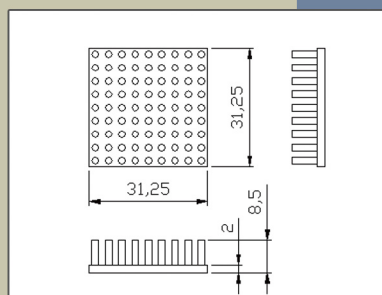
PART NO :	JT-BGA-272711
MATERIAL :	AL6063-T5
FINISH :	BLACK ANODIZED
REMARK :	



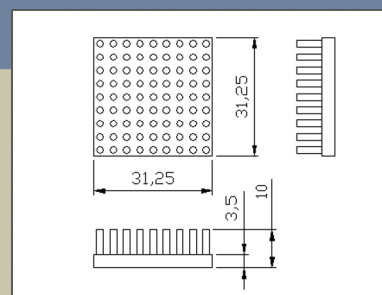
PART NO :	JT-BGA-292909
MATERIAL :	AL6063-T5
FINISH :	BLACK ANODIZED
REMARK :	



PART NO :	JT-BGA303014
MATERIAL :	AL6063-T5
FINISH :	BLACK ANODIZED
REMARK :	



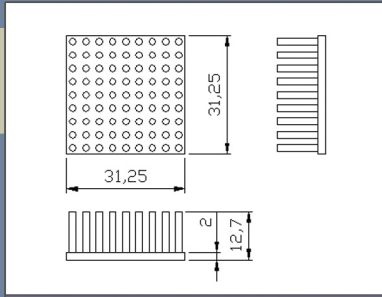
PART NO :	JT-BGA313108
MATERIAL :	AL6063-T5
FINISH :	BLACK ANODIZED
REMARK :	



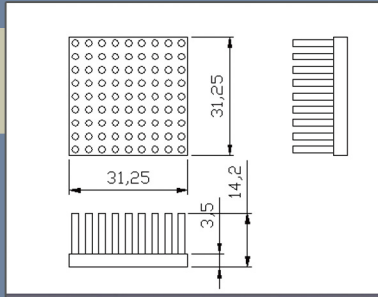
PART NO :	JT-BGA313110
MATERIAL :	AL6063-T5
FINISH :	BLACK ANODIZED
REMARK :	



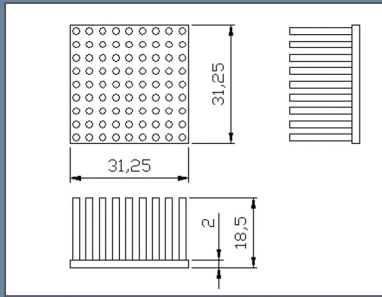
# PGA /BGA



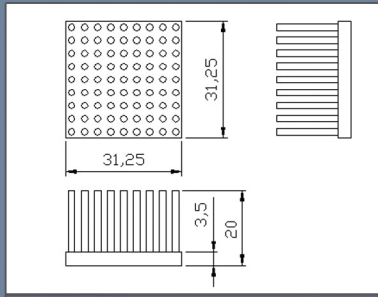
PART NO :	JT-BGA313112
MATERIAL :	AL6063-T5
FINISH :	BLACK ANODIZED
REMARK :	



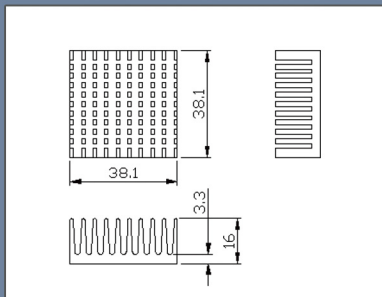
PART NO :	JT-BGA313114
MATERIAL :	AL6063-T5
FINISH :	BLACK ANODIZED
REMARK :	



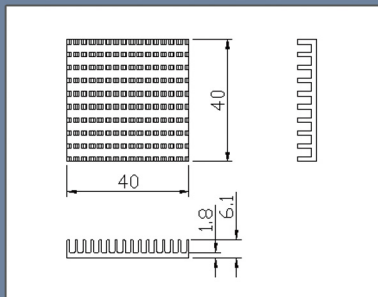
PART NO :	JT-BGA313118
MATERIAL :	AL6063-T5
FINISH :	BLACK ANODIZED
REMARK :	



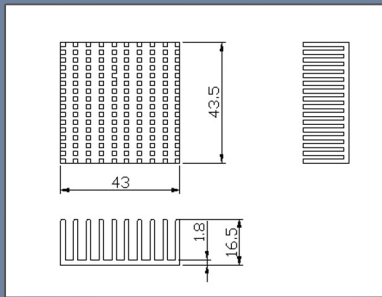
PART NO :	JT-BGA313120
MATERIAL :	AL6063-T5
FINISH :	BLACK ANODIZED
REMARK :	



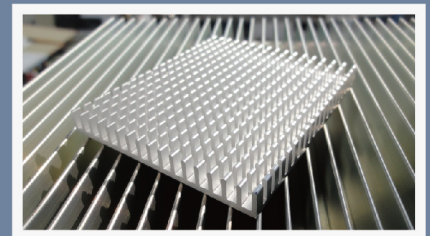
PART NO :	JT-BGA-383816
MATERIAL :	AL6063-T5
FINISH :	BLACK ANODIZED
REMARK :	



PART NO :	JT-BGA-404006
MATERIAL :	AL6063-T5
FINISH :	BLACK ANODIZED
REMARK :	



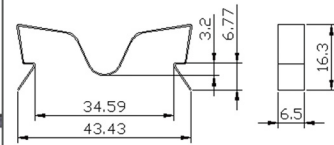
PART NO :	JT-BGA-434316
MATERIAL :	AL6063-T5
FINISH :	BLACK ANODIZED
REMARK :	



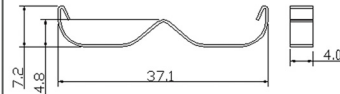
# Clips



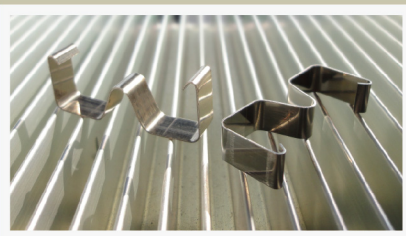
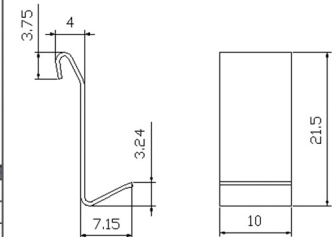
PART NO :	JT-FES-0004-001
MATERIAL :	SUS 301, T=0.5mm
FINISH :	CLEAN
REMARK :	FOR JT-T218-0001



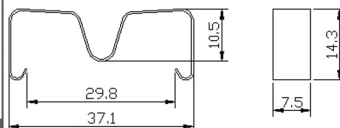
PART NO :	JT-FES-0042-001
MATERIAL :	SUS301 T=0.4mm
FINISH :	CLEAN
REMARK :	FOR JT-T220-0087



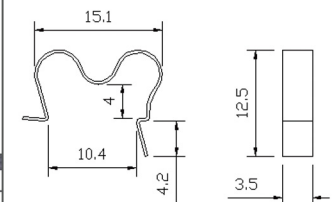
PART NO :	JT-FES-0043-001
MATERIAL :	SUS 301, T=0.5mm
FINISH :	CLEAN
REMARK :	



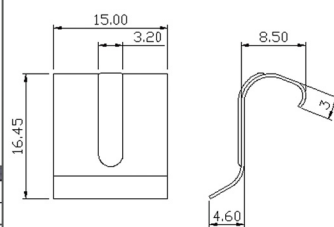
PART NO :	JT-FES-0044-001
MATERIAL :	SUS 301, T=0.4mm
FINISH :	CLEAN
REMARK :	



PART NO :	JT-FES-0054-001
MATERIAL :	SUS 301, T=0.3mm
FINISH :	CLEAN
REMARK :	



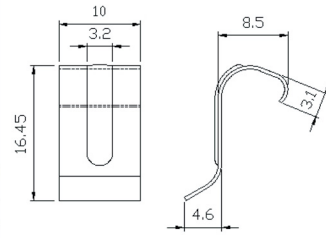
PART NO :	JT-FES-0063-001
MATERIAL :	SUS 301, T=0.4mm
FINISH :	CLEAN
REMARK :	



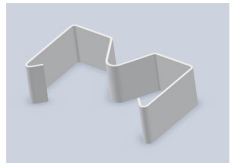
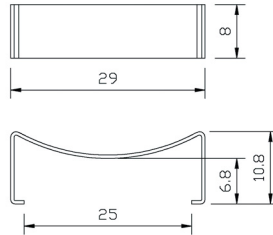
# Clips



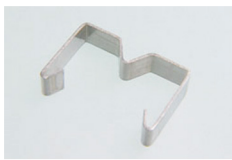
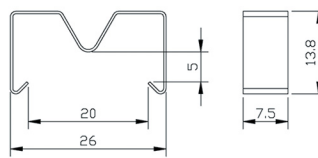
PART NO :	JT-FES-0064-001
MATERIAL :	SUS 301, T=0.4mm
FINISH :	CLEAN
REMARK :	



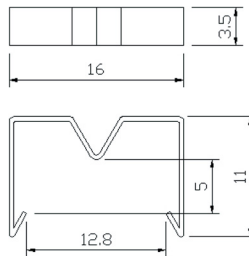
PART NO :	JT-MSH-0003
MATERIAL :	SUS 301, T=0.5mm
FINISH :	CLEAN
REMARK :	



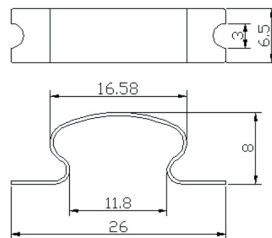
PART NO :	JT-MSH-0005
MATERIAL :	SUS 301, T=0.4mm
FINISH :	CLEAN
REMARK :	



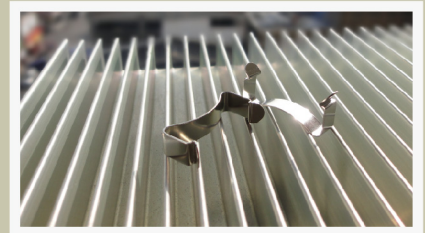
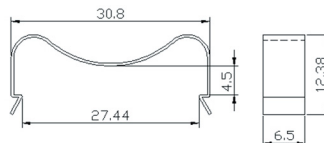
PART NO :	JT-MSH-0006
MATERIAL :	SUS 301, T=0.4mm
FINISH :	CLEAN
REMARK :	



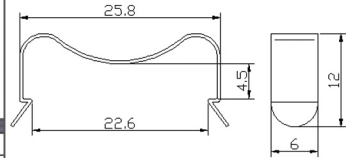
PART NO :	JT-MSH-0007
MATERIAL :	SUS 301, T=0.4mm
FINISH :	CLEAN
REMARK :	FOR JT-T218-0011



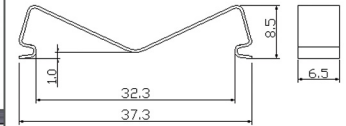
PART NO :	JT-MSH-0008
MATERIAL :	SUS 301, T=0.4mm
FINISH :	CLEAN
REMARK :	



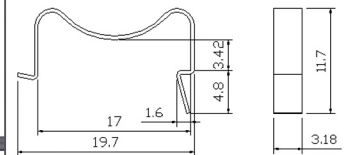
# Clips



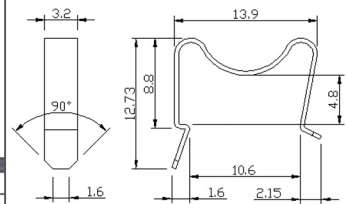
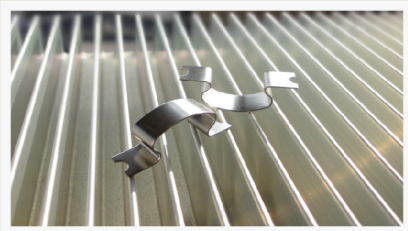
PART NO :	JT-MSH-0009
MATERIAL :	SUS 301, T=0.4mm
FINISH :	CLEAN
REMARK :	



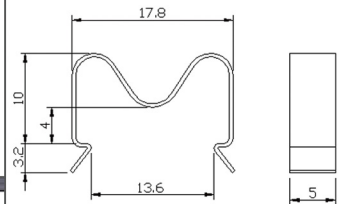
PART NO :	JT-MSH-0010
MATERIAL :	SUS 301, T=0.4mm
FINISH :	CLEAN
REMARK :	FOR JT-T220-0001



PART NO :	JT-MSH-0011
MATERIAL :	SUS 301, T=0.4mm
FINISH :	CLEAN
REMARK :	



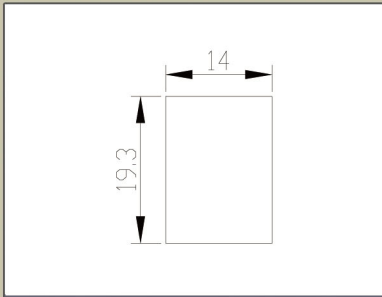
PART NO :	JT-MSH-0014
MATERIAL :	SUS 301, T=0.4mm
FINISH :	CLEAN
REMARK :	



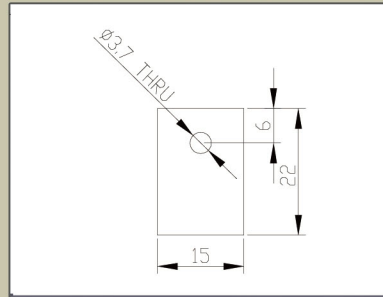
PART NO :	JT-MSH-0015
MATERIAL :	SUS 301, T=0.4mm
FINISH :	CLEAN
REMARK :	



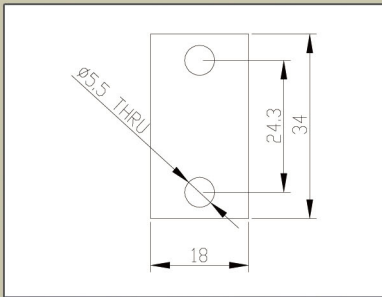
# Ceramics



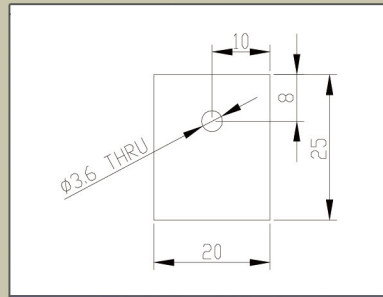
PART NO :	BK-ALO-0001
MATERIAL :	AL <sub>2</sub> O <sub>3</sub>
THICKNESS :	1.6 mm
REMARK :	



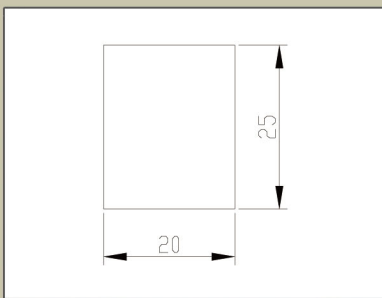
PART NO :	BK-ALO-0002
MATERIAL :	AL <sub>2</sub> O <sub>3</sub>
THICKNESS :	1.5 mm
REMARK :	



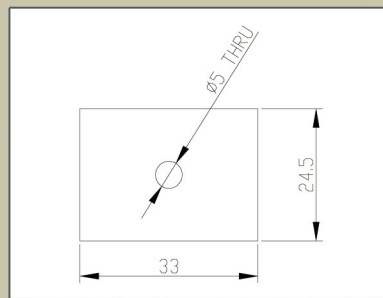
PART NO :	BK-ALO-0003
MATERIAL :	AL <sub>2</sub> O <sub>3</sub>
THICKNESS :	2.0 mm
REMARK :	



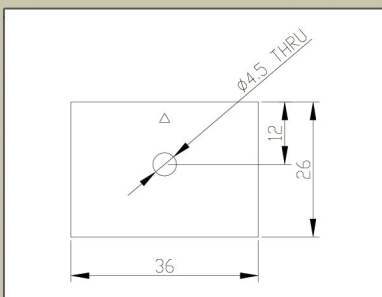
PART NO :	BK-ALO-0004
MATERIAL :	AL <sub>2</sub> O <sub>3</sub>
THICKNESS :	2.0 mm
REMARK :	



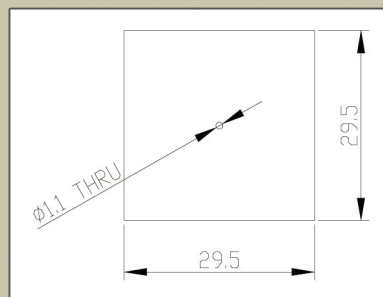
PART NO :	BK-ALO-0005
MATERIAL :	AL <sub>2</sub> O <sub>3</sub>
THICKNESS :	3.0 mm
REMARK :	



PART NO :	BK-ALO-0006
MATERIAL :	AL <sub>2</sub> O <sub>3</sub>
THICKNESS :	1.5 mm
REMARK :	



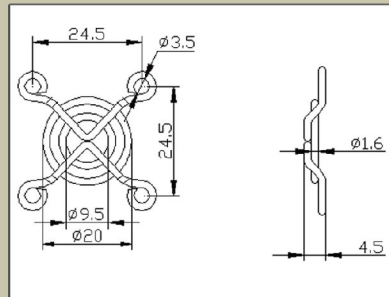
PART NO :	BK-ALO-0007
MATERIAL :	AL <sub>2</sub> O <sub>3</sub>
THICKNESS :	1.5 mm
REMARK :	



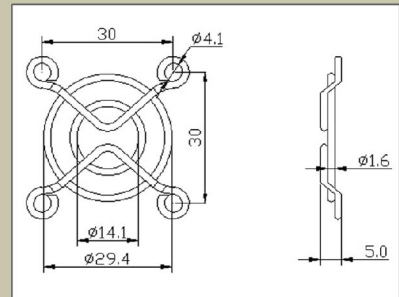
PART NO :	BK-ALO-0008
MATERIAL :	AL <sub>2</sub> O <sub>3</sub>
THICKNESS :	2.0 mm
REMARK :	



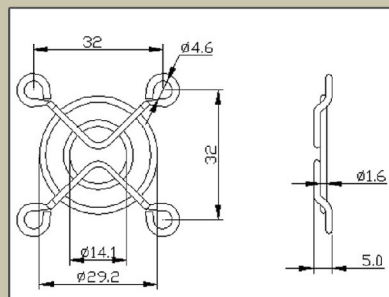
# Fan Guards



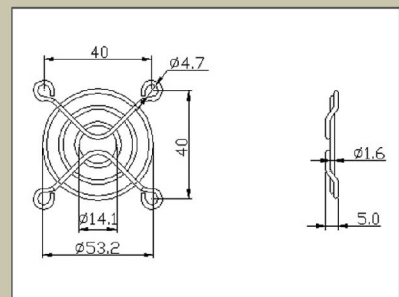
PART NO :	BK-MFG-030
MATERIAL :	STEEL WIRE
FINISH :	NICKEL CHROME
REMARK :	



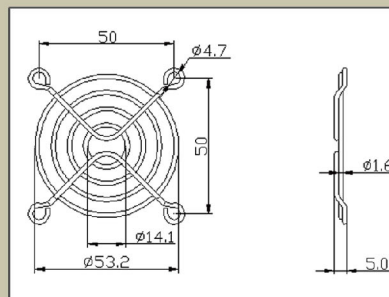
PART NO :	BK-MFG-035
MATERIAL :	STEEL WIRE
FINISH :	NICKEL CHROME
REMARK :	



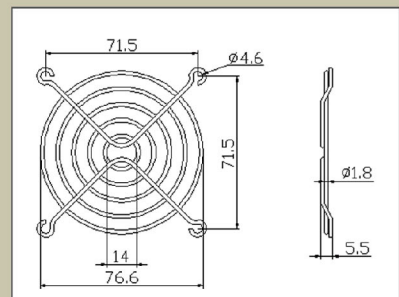
PART NO :	BK-MFG-040
MATERIAL :	STEEL WIRE
FINISH :	NICKEL CHROME
REMARK :	



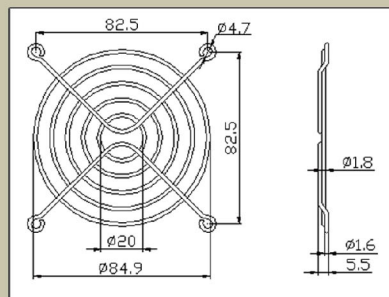
PART NO :	BK-MFG-050
MATERIAL :	STEEL WIRE
FINISH :	NICKEL CHROME
REMARK :	



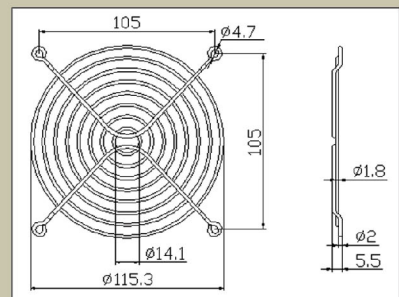
PART NO :	BK-MFG-060
MATERIAL :	STEEL WIRE
FINISH :	NICKEL CHROME
REMARK :	



PART NO :	BK-MFG-080
MATERIAL :	STEEL WIRE
FINISH :	NICKEL CHROME
REMARK :	

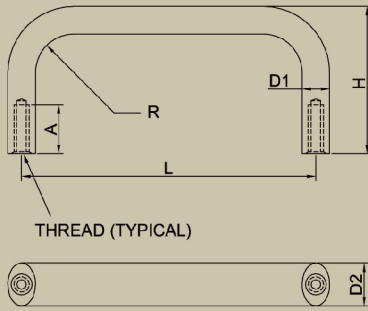


PART NO :	BK-MFG-090
MATERIAL :	STEEL WIRE
FINISH :	NICKEL CHROME
REMARK :	

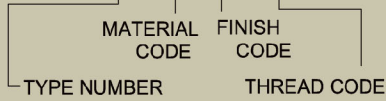


PART NO :	BK-MFG-120-02
MATERIAL :	STEEL WIRE
FINISH :	NICKEL CHROME
REMARK :	

# Handle



PART NUMBER  
ORDERING SYSTEM  
XXXX-XX-XX-XXXX



MATERIAL	CODE
ALUMINUM	AL
BRASS	BS
STAINLESS	SS

FINISH	CODE
BLACK ANODIZED	01
CLEAR ANODIZED	02
CLEAN	03
NICKEL	04

THEAD	A(DEPTH)	CODE
4-40	1/4"	0440
6-32	5/16"	0632
8-32	3/8"	0832
10-32	5/16"	1032
M5	10mm	M510

## Round

TYPE NO	D1(∅)	R	L	H
R100	1/8"	1/8"	1"	3/4"
R101			2"	
R102			1"	1"
R103			2"	
R104			1"	
R105	2"	1-1/2"		
R200	5/32"	5/32"	1"	3/4"
R201			2"	
R202			3"	1"
R203			1"	
R204			2"	
R205	3"	1"		
R300	3/16"	3/16"	1"	1"
R301			2"	
R302			3"	
R303			4"	1-1/2"
R304			5"	
R305			1"	
R306			2"	
R307			3"	
R308			4"	
R309	5"			
R400	1/4"	1/4"	2"	1"
R401			3"	
R402			4"	
R403			5"	1-1/2"
R404			2"	
R405			3"	
R406			4"	
R407	5"			
R500	5/16"	5/16"	2"	1"
R501			3"	
R502			4"	1-1/2"
R503			5"	
R504			2"	
R505			3"	
R506			4"	
R507	5"			
R600	3/8"	3/8"	2"	1-5/16"
R601			3"	
R602			4"	1-1/2"
R603			5"	
R604			1-1/2"	
R605			3"	
R606			4"	
R607	5"			
R700	1/2"	1/2"	4"	2"
R701			5"	
R702			6"	2-1/2"
R703			4"	
R704			5"	
R705	6"			

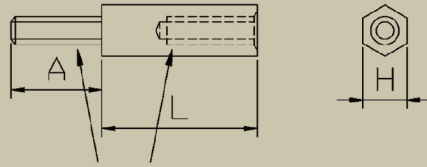
## Oval

TYPE NO	D1	D2	R	L	H
V100	9/32"	7/16"	1/2"	2"	1"
V101				3"	
V102				4"	
V103				5"	1-1/2"
V104				2"	
V105				3"	
V106				4"	
V107				5"	1"
V200				2"	
V201				3"	
V202	4"				
V203	5"	1-1/2"			
V204	2"				
V205	3"				
V206	4"				
V207	5"				
V300	8mm	12mm	20mm	55mm	40mm
V301				88mm	
V302				100mm	
V303				120mm	



# Hex Standoffs

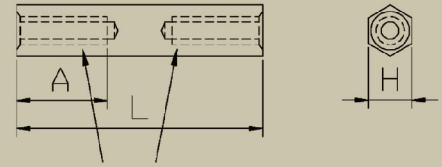
## M-F HEX STANDOFF



THREAD (TYPICAL)

TYPE NO	H	L
MF00	3/16"	5/16"
MF01		3/8"
MF02		7/16"
MF03		1/2"
MF04	1/4"	9/16"
MF05		5/16"
MF06		3/8"
MF07		7/16"
MF08	4mm	1/2"
MF09		9/16"
MF10		5mm
MF11		8mm
MF12	5mm	10mm
MF13		12mm
MF14		15mm
MF15		5mm
MF16	6mm	8mm
MF17		10mm
MF18		12mm
MF19		15mm
MF20	6mm	5mm
MF21		8mm
MF22		10mm
MF23		12mm
MF24		15mm

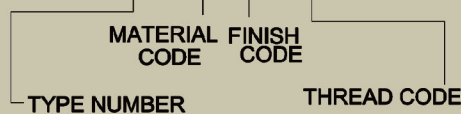
## F-F HEX STANDOFF



THREAD (TYPICAL)

TYPE NO	H	L
FF00	3/16"	5/16"
FF01		3/8"
FF02		7/16"
FF03		1/2"
FF04	1/4"	9/16"
FF05		5/16"
FF06		3/8"
FF07		7/16"
FF08	4mm	1/2"
FF09		9/16"
FF10		5mm
FF11		8mm
FF12	5mm	10mm
FF13		12mm
FF14		15mm
FF15		5mm
FF16	6mm	8mm
FF17		10mm
FF18		12mm
FF19		15mm
FF20	6mm	5mm
FF21		8mm
FF22		10mm
FF23		12mm
FF24		15mm

**PART NUMBER  
ORDERING SYSTEM  
XXXX-XX-XX-XXXX**



MATERIAL	CODE
BRASS	BS
STAINLESS	SS

FINISH	CODE
CLEAN	01
NICKEL	02

THEAD	A(DEPTH)	CODE
4-40	1/4"	0440
6-32	5/16"	0632
M2	6mm	M206
M3	6mm	M306
M4	6mm	M406