

THE DRAWING ON THIS PRINT AND THE INFORMATION THEREIN ARE PROPRIETARY TO JENOPTIK OPTICAL SYSTEMS, LLC AND SHALL NOT BE USED IN WHOLE OR IN PART WITHOUT THE WRITTEN CONSENT OF JENOPTIK OPTICAL SYSTEMS, LLC.

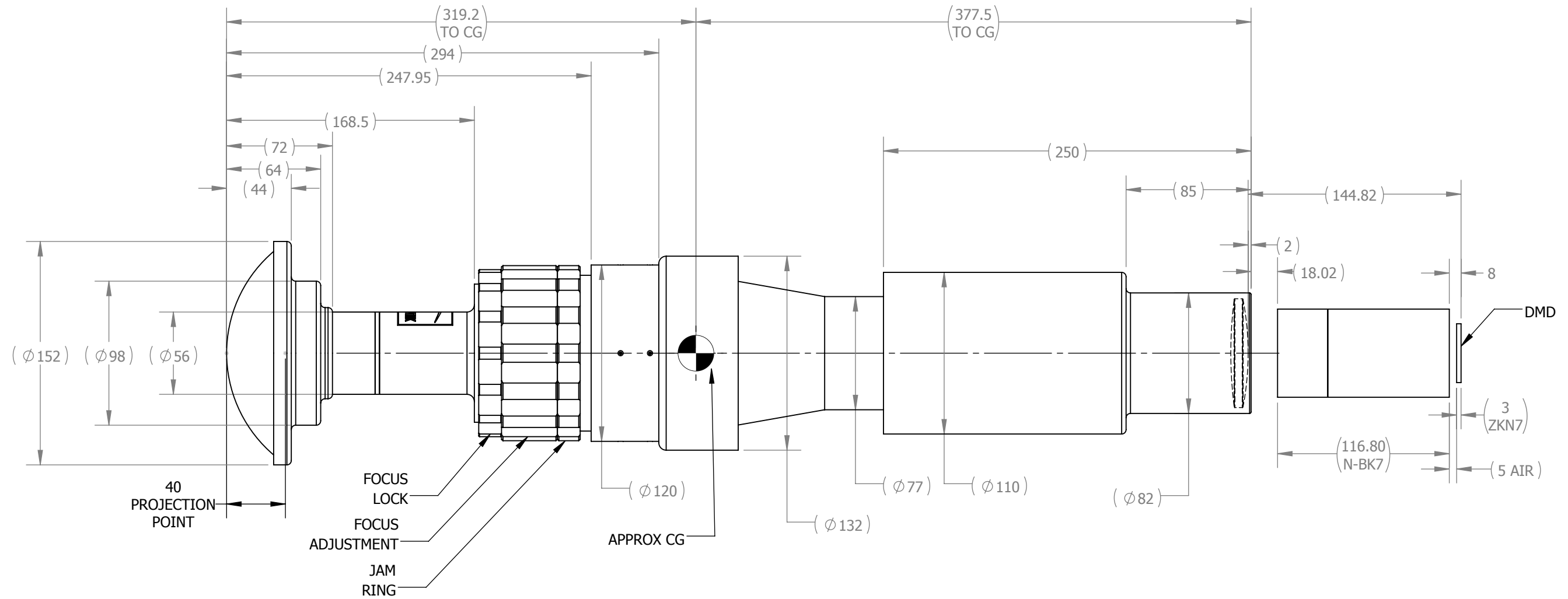
RELEASED

ASSEMBLY USED ON:

-

REVISION HISTORY

ZONE & EC NO	REV	DESCRIPTION	DATE
--------------	-----	-------------	------



PARAMETER	REQUIREMENT
PROJECTOR	CHRISTIE D4KLH60
BRIGHTNESS	60K LUMENS
DMD IMAGER	4096 X 2160
DMD IMAGER DIMS	30.96576 X 16.3296 MM
PIXEL SIZE	7.56 um
THROW	12250 mm
DOME TYPE	SPHERICAL
DOME RADIUS	11330 mm
VERTICAL OFFSET MAPPING	25 %
EFL	10.349 MM
HORIZONTAL F.O.V.	170°
VERTICAL F.O.V.	90°
DIAGONAL F.O.V.	192°

MAT'L:
AS BUILT

FINISH:
N/A

BREAK ALL SHARP CORNERS R 0.25 MM MIN
SURFACE TEXTURE $\sqrt{1.6}$ UNLESS OTHERWISE SPECIFIED

DRAWN	M. BAILEY	01/25/2017
CHECKED	T. VICTORIO	01/31/2017
APPROVED	D. SYKORA	02/02/2017
EC APRVD	-	-

UNLESS OTHERWISE SPECIFIED DIMENSIONS ARE IN MILLIMETERS AND INCLUDE APPLIED FINISH TOLERANCES. INTERPRET ALL DIMENSIONS AND TOLERANCES PER ASME Y14.5 2009

TOLERANCE ON ANGLES = ± 0.25°	HOLE DIM	X = ± 0.5
LINEAR DIM	X = ± 0.5	X.X = ± 0.2
	X.XX = ± 0.1	X.XXX = ± 0.05

JENOPTIK Optical Systems, LLC
16490 Innovation Drive | Jupiter, FL 33478-6428
Phone: 561 881-7400 | Fax: 561 881-1947
www.jenoptik-inc.com



TITLE		
F-THETA PROJECTION LENS FOV 192°, EFL 10.349 MM		
SIZE B	DWG NO 16357000-ICD	REV -
WEIGHT: 10 kg		SHEET 1 OF 2

THE DRAWING ON THIS PRINT AND THE INFORMATION THEREIN ARE PROPRIETARY TO JENOPTIK OPTICAL SYSTEMS, LLC AND SHALL NOT BE USED IN WHOLE OR IN PART WITHOUT THE WRITTEN CONSENT OF JENOPTIK OPTICAL SYSTEMS, LLC.

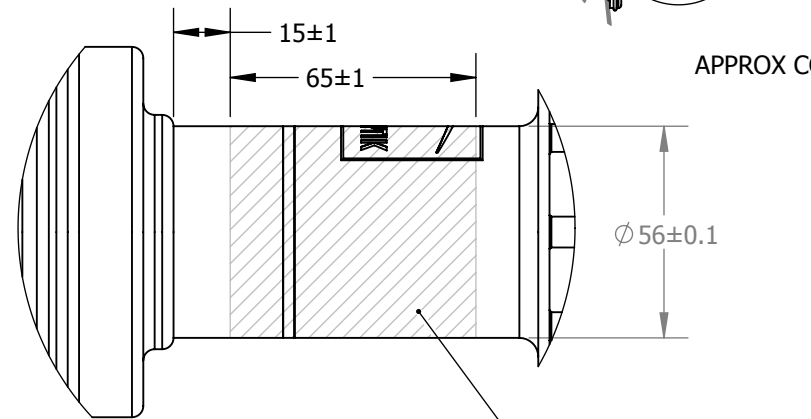
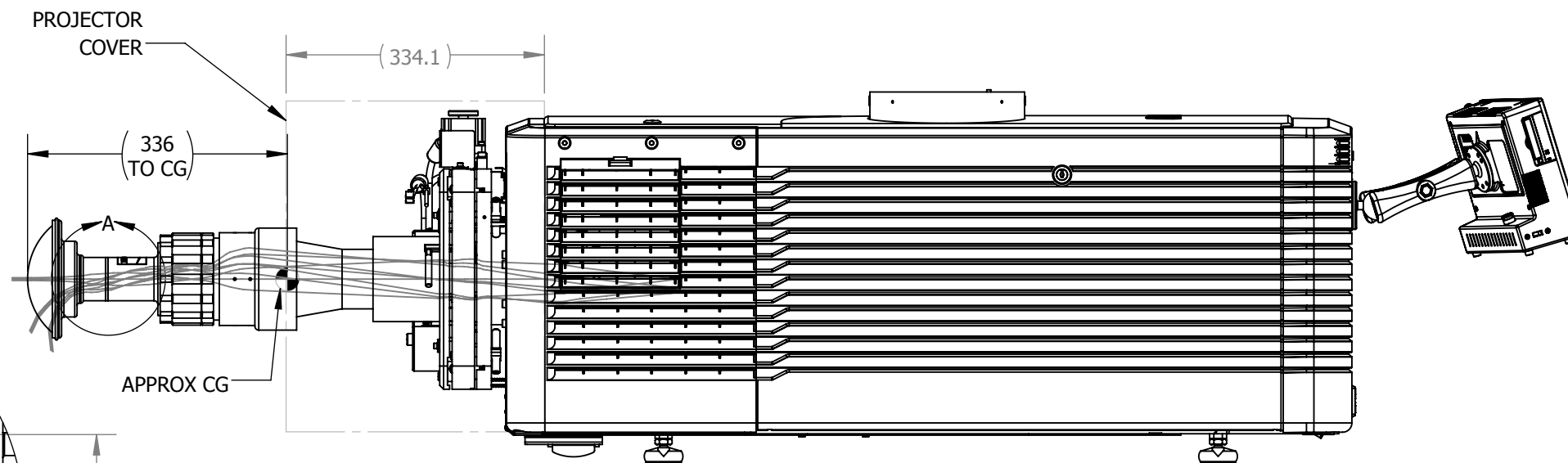
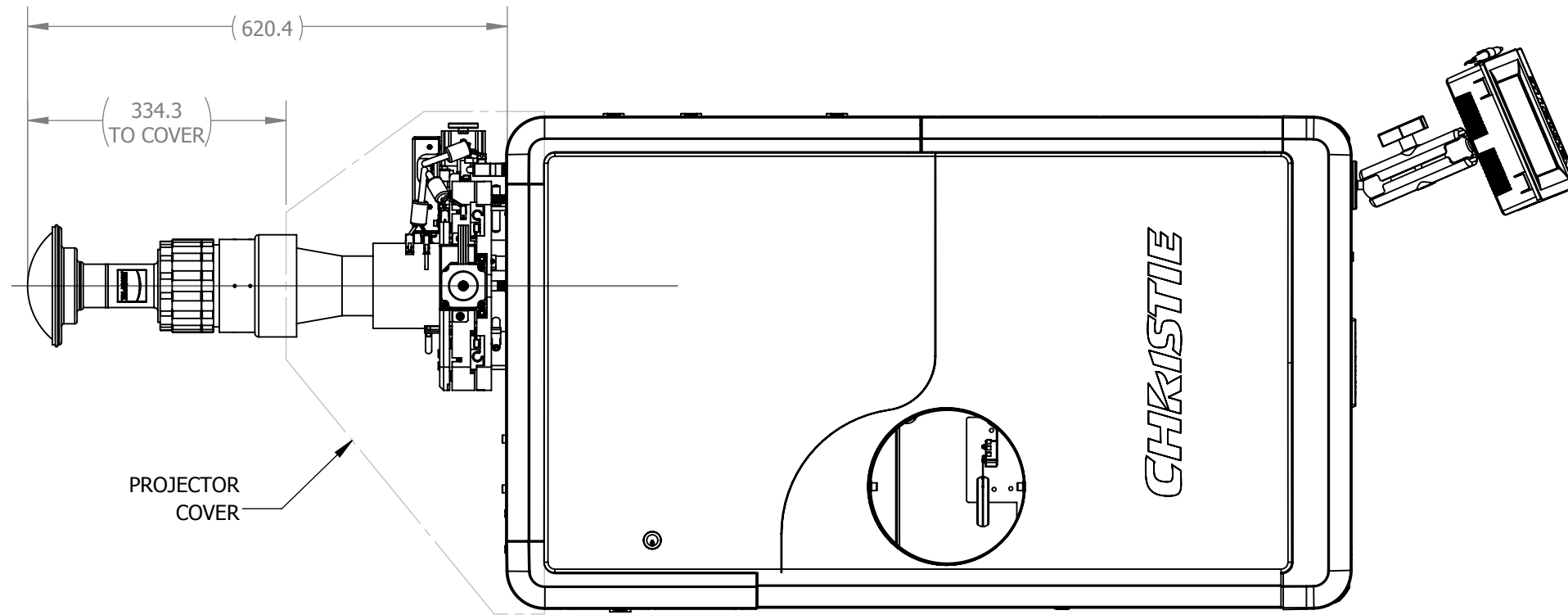
RELEASED

ASSEMBLY USED ON:


-

REVISION HISTORY

ZONE & EC NO	REV	DESCRIPTION	DATE
--------------	-----	-------------	------



DETAIL A
SCALE 1 : 2

MAT'L: AS BUILT	DRAWN	M. BAILEY	01/25/2017	JENOPTIK Optical Systems, LLC 16490 Innovation Drive Jupiter, FL 33478-6428 Phone: 561 881-7400 Fax: 561 881-1947 www.jenoptik-inc.com	
	CHECKED	T. VICTORIO	01/31/2017		
FINISH: N/A	APPROVED	D. SYKORA	02/02/2017	TITLE	
	EC APRVD	-	-	F-THETA PROJECTION LENS FOV 192°, EFL 10.349 MM	
<small>UNLESS OTHERWISE SPECIFIED DIMENSIONS ARE IN MILLIMETERS AND INCLUDE APPLIED FINISH TOLERANCES. INTERPRET ALL DIMENSIONS AND TOLERANCES PER ASME Y14.5 2009</small>				SIZE	REV
<small>TOLERANCE ON ANGLES = ± 0.25°</small> <small>LINEAR DIM X = ± 0.5 X.X = ± 0.2 X.XX = ± 0.1 X.XXX = ± 0.05</small> <small>HOLE DIM X = ± 0.5 X.X = ± 0.2 X.XX = ± 0.1 X.XXX = ± 0.05</small>				B DWG NO 16357000-ICD	
<small>BREAK ALL SHARP CORNERS R 0.25 MM MIN</small> <small>SURFACE TEXTURE 3.2/ UNLESS OTHERWISE SPECIFIED</small>				WEIGHT: 10 kg	SHEET 2 OF 2