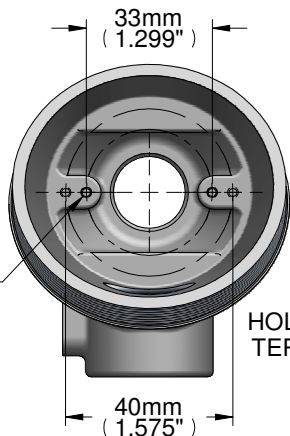
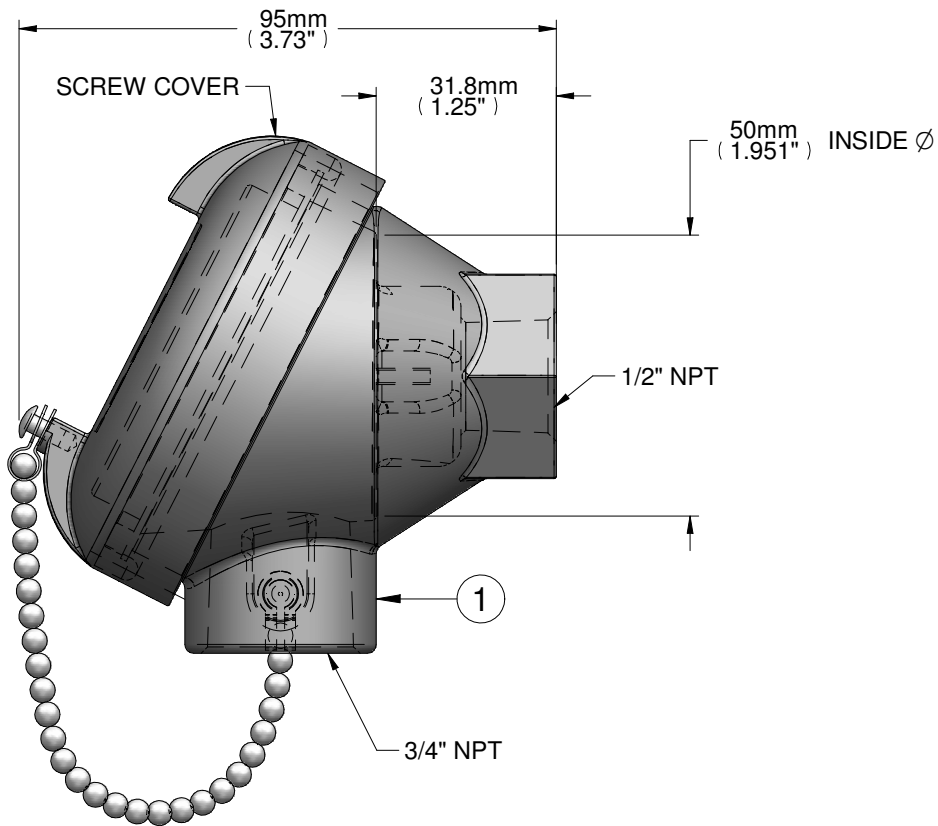


Corrosion resistant
 Moisture resistant
 Dust resistant
 Durable paint as a rust
 preventative finish
 NEMA 4
 Max temp rating 500°F



6-32 SCREWS

HOLE PATTERNS FOR MOUNTING
 TERMINAL BLOCK/ TRANSMITTER

DESCRIPTION

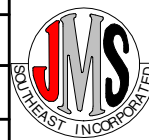
1 HEAD, GENERAL PURPOSE, PAINTED CAST IRON, SCREW COVERED W/ CAP & CHAIN,
 1/2" X 3/4" FNPT, SILICONE GASKET, WEATHER TIGHT SEAL, NEMA 4

JMS PART #
6N

JMS SOUTHEAST INCORPORATED CERTIFIES THIS DRAWING IS IN ACCORDANCE WITH JMS SOUTHEAST INCORPORATED ENGINEERING SPECIFICATIONS AND ACCURATELY REPRESENTS THE EQUIPMENT FURNISHED. THIS DRAWING IS THE SOLE PROPERTY OF JMS SE, AND MUST BE RETURNED UPON DEMAND IT MAY NOT BE REPRODUCED NOR THE INFORMATION CONTAINED THEREIN USED WITHOUT THE WRITTEN PERMISSION OF JMS SOUTHEAST INCORPORATED

| | | | |
|-----------------|------------|---------------------|--|
| Company Name: | | JMS-SE HEADS | |
| Reference Data: | Drawing #: | | |

| TOLERANCE TABLE: | Approvals | Initials | Date |
|-----------------------------------------------------------------------------------------------------------------------------------|-------------|----------|------|
| PROBE (L): 0-48" ±1/8" 4 8"-144" ±1/4" 144" + -1"/+2" | Drafting | | |
| WIRE (L): <24" -1/2"/+1" >24" -1/2"/+2" | | | |
| PROT. TUBE (P&U): ±1/4" FRACTIONAL DIM: ±1/8" DECIMAL DIM: ±0.10" XXX ±0.010" XXXX ±0.005" UNLESS STATED OTHERWISE | Engineering | | |
| | Second | | |



JMS SOUTHEAST, INC.
 Temperature Measurement
 105 Temperature Lane
 Statesville, North Carolina 28677
 Phone: (704) 873-1835
 Fax: (704) 878-6166
 www.jms-se.com
 Email: sensors@jms-se.com