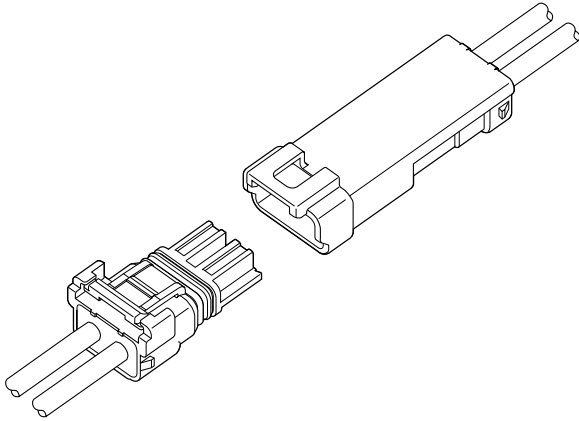




# WPJ CONNECTOR

**5.0mm pitch/Disconnectable Crimp style Wire-to-wire connectors**



**Compact, Water Resist and Durable.**  
**This connector for electrical connection**  
**can be used on both waterproof and non-**  
**waterproof conditions, depending on the**  
**usage.**

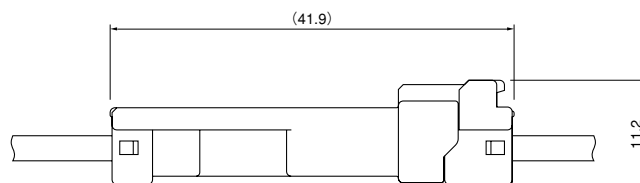
- **Waterproof performance [Grade 7 ingress protection of JIS C 0920 (IPX7 of IEC 60529 )]**
- **Control key system**
- **Contacting part of contact is hardly deformed**
- **Inner-locking system**
- **Compact design**

## Specifications

- Current rating: 7 A AC, DC (AWG #18)
- Voltage rating: 300 V AC, DC
- Temperature range: -25°C to +85°C  
 (including temperature rise in applying electrical current)
- Contact resistance: Initial value/ 10 mΩ max.  
 After environmental tests/ 20 mΩ max.
- Insulation resistance: 1,000 MΩ min.
- Withstanding voltage: 1,500 VAC/minute
- Applicable wire: Conductor size/ AWG #22 to #18  
 Insulation O.D./ 2.32 to 2.83 mm  
 1.52 to 2.03 mm
- Waterproof grade: Grade 7 ingress protection of JIS C 0920  
 (IPX7 of IEC 60529 )
- \* Compliant with RoHS.
- \* Refer to "General Instruction and Notice when using Terminals and Connectors" at the end of this catalog.
- \* Contact JST for details.

## Standards

- ⚡ Recognized E60389
- Ⓢ Certified LR20812
- ⚙ File No.R50073100

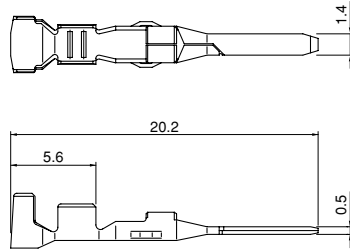


# WPJ CONNECTOR

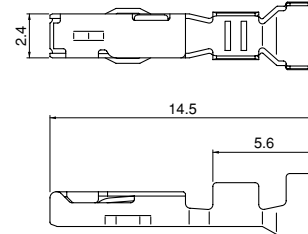
(Non-waterproof type)

## Contact

Tab contact



Receptacle contact



Model No.		Applicable wire		Insulation O.D. (mm)	Q'ty / reel	
Tab contact	Receptacle contact	mm <sup>2</sup>	AWG #		Tab contact	Receptacle contact
<b>SWPJT-21T-P0.5</b>	<b>SWPJR-21T-M0.5</b>	0.33~0.83	22~18	2.32~2.83	6,000	4,500
<b>SWPJT-21T-P0.5A</b>	<b>SWPJR-21T-M0.5A</b>			1.52~2.03	9,000	4,500

### Material and Finish

Copper alloy, tin-plated (reflow treatment)

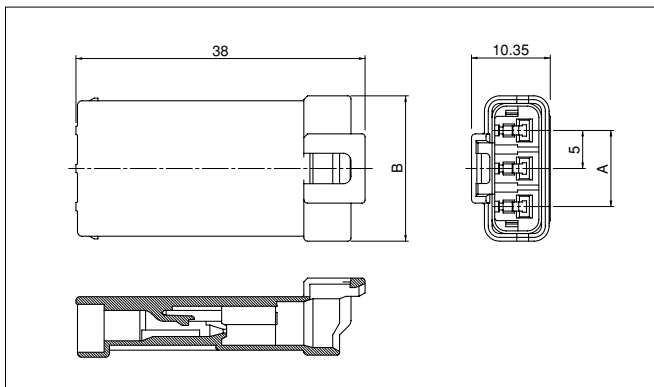
## RoHS compliance

## Non-waterproof type

Contact	Crimping machine	Applicator		
		Crimp applicator	Dies	Crimp applicator with dies
<b>SWPJT-21T-P0.5</b>	AP-K2N	MKS-L	MK/SWPJR/T-21-05	APLMK SWPJR/T21-05
		—	—	—
<b>SWPJR-21T-M0.5</b>	AP-K2N	MKS-L	MK/SWPJR/T-21-05	APLMK SWPJR/T21-05
		—	—	—

Contact	Crimping machine	Applicator		
		Crimp applicator	Dies	Crimp applicator with dies
<b>SWPJT-21T-P0.5A</b>	AP-K2N	MKS-L	MK/SWPJR/T-21-05A	APLMK SWPJR/T21-05A
		—	—	—
<b>SWPJR-21T-M0.5A</b>	AP-K2N	MKS-L	MK/SWPJR/T-21-05A	APLMK SWPJR/T21-05A
		—	—	—

## Tab housing (for tab contact)



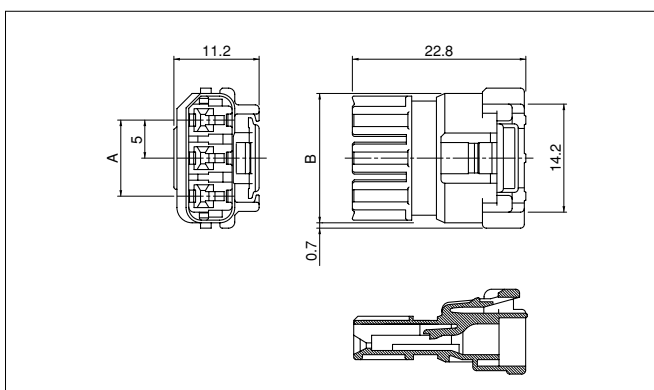
Circuits	Model No.	Dimensions (mm)		Q'ty / bag
		A	B	
2	<b>WPJT-02V-1-S</b>	—	14.2	500
3	<b>WPJT-03V-1-S</b>	10	19.2	500

### Material

Glass-filled PBT, UL94V-0, natural (white)

## RoHS compliance

## Receptacle housing (for receptacle contact)



Circuits	Model No.	Dimensions (mm)		Q'ty / bag
		A	B	
2	<b>WPJR-02V-1-S</b>	—	12.1	1,000
3	<b>WPJR-03V-1-S</b>	10	17.1	1,000

### Material

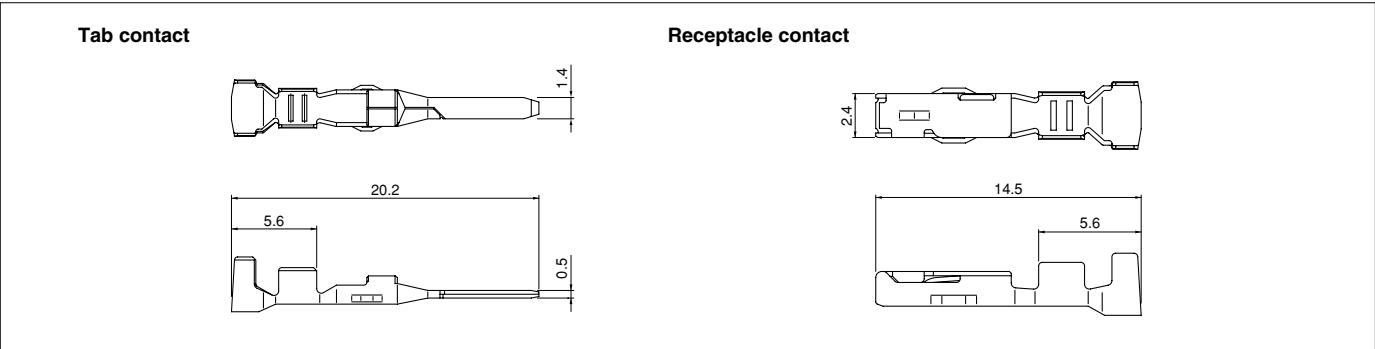
Glass-filled PBT, UL94V-0, natural (white)

## RoHS compliance

# WPJ CONNECTOR

(Waterproof type)

## Contact



Model No.		Applicable wire		Insulation O.D. (mm)	Q'ty / reel	
Tab contact	Receptacle contact	mm²	AWG #		Tab contact	Receptacle contact
SWPJT-21T-P0.5	SWPJR-21T-M0.5	0.33~0.83	22~18	2.32~2.83	6,000	4,500

Material and Finish

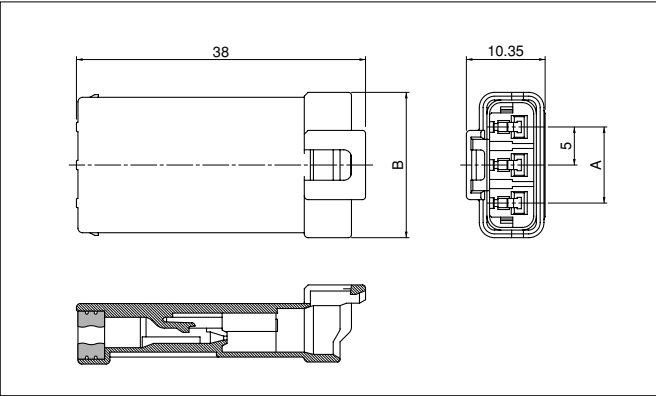
Copper alloy, tin-plated (reflow treatment)

### RoHS compliance

### Waterproof type

Contact	Crimping machine	Applicator		
		Crimp applicator	Dies	Crimp applicator with dies
SWPJT-21T-P0.5	AP-K2N	MKS-L	MK/SWPJR/T-21-05	APLMK SWPJR/T21-05
		—	—	—
SWPJR-21T-M0.5	AP-K2N	MKS-L	MK/SWPJR/T-21-05	APLMK SWPJR/T21-05
		—	—	—

## Tab housing assembly (for tab contact)



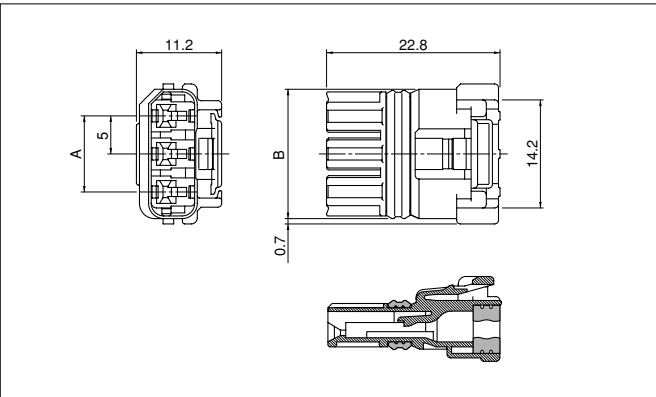
Circuits	Model No.	Dimensions (mm)		Q'ty / bag
		A	B	
2	02T-WPJV-1-SM	—	14.2	675
3	03T-WPJV-1-SM	10	19.2	495

Material

Tab housing: Glass-filled PBT, UL94V-0, natural (white)  
Seal rubber plate: Silicon, green

### RoHS compliance

## Receptacle housing assembly (for receptacle contact)



Circuits	Model No.	Dimensions (mm)		Q'ty / bag
		A	B	
2	02R-WPJV-1-SMM	—	12.1	720
3	03R-WPJV-1-SMM	10	17.1	576

Material

Receptacle housing: Glass-filled PBT, UL94V-0, natural (white)  
Seal ring: Silicon, green  
Seal rubber plate: Silicon, green

### RoHS compliance