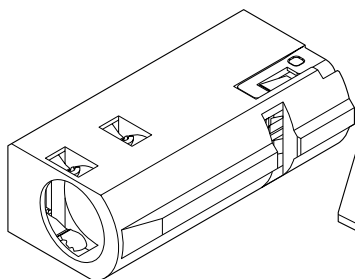




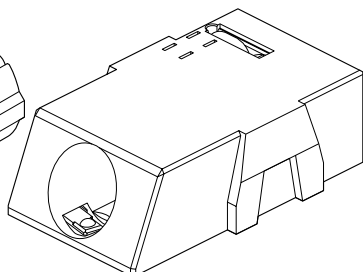
EP CONNECTOR SERIES



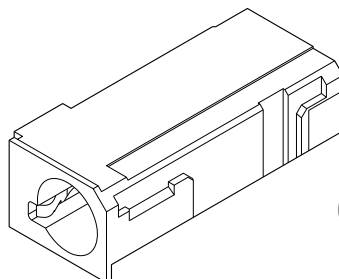
Interface type



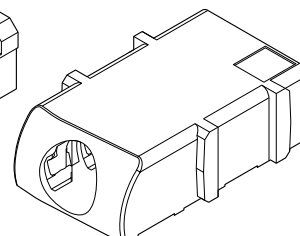
3.5EP Type R



3.5EP SLANT5 Type



3.5EP WP2 Type



3.5EP WP3 Type

3.5EP Type R

- **3.5mm in diameter. Connector for 4-circuit plug (EIAJ RC-5325A-compliant plug)**
- **Normal close, Independent switch**
The plug with different GND position is also available by adopting the plug and the block electricity switch function.
- **Round shape**
This connector shape is available for round shape of adoption chassis.
- **Adopting two contact points terminal**
2 contact points terminal for the GND/MIC terminal is adopted to reduce the electrical resistance.

3.5EP SLANT5 Type

- **3.5mm in diameter. Connector for 4-circuit plug (EIAJ RC-5325A-compliant plug)**
- **Normal open, Independent switch**
The plug with different GND position is also available by adopting the plug and the block electricity switch function.
- **Insertion and withdrawal forces of plug**
Lock pin is adopted to improve insertion force feeling and to strengthen withdrawal force of plug.

Specifications

- Current rating: 2 A AC, DC
- Voltage rating: 30 V AC, DC
- Temperature range: -25°C to +85°C
(including temperature rise in applying electrical current)
- Contact resistance: 50 mΩ max.
- Insulation resistance: 1,000 MΩ min.
- Withstanding voltage: 400 VAC/minute

3.5EP WP2 Type

- **3.5mm in diameter. Connector for 4-circuit plug (EIAJ RC-5325A-compliant plug)**
- **Normal open, Independent switch**
Switch mechanism does not pass through the electric current to the plug.
- **Low profile**
4.1mm height is realized by using the connector mounted to a FPC laterally.
- **Dust and Drip-proof performance**
- **Correspond to the change of shape of housing to the used case.**

3.5EP WP3 Type

- **3.5mm in diameter. Connector for 4-circuit plug (EIAJ RC-5325A-compliant plug)**
- **Normal open, Independent switch**
Switch mechanism does not pass through the electric current to the plug.
- **Dust and Drip-proof performance**
- **Correspond to the change of shape of housing to the used case.**

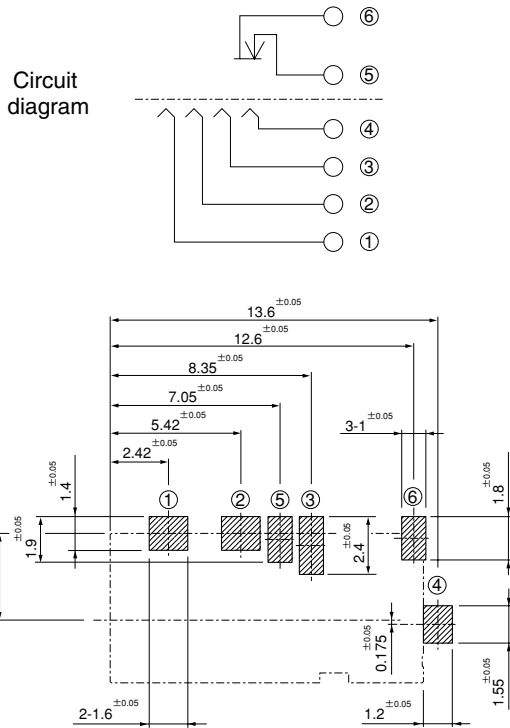
* Refer to "General Instruction and Notice when using Terminals and Connectors" at the end of this catalog.

* Contact JST for details.

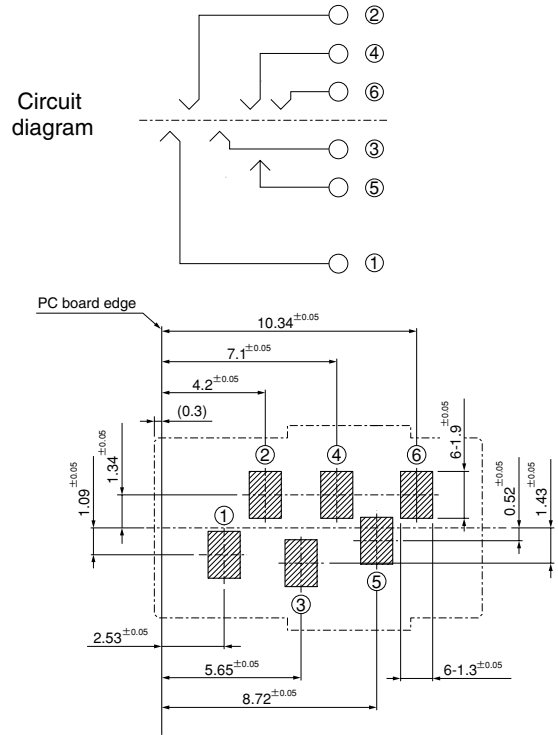
* Compliant with RoHS.

EP CONNECTOR SERIES

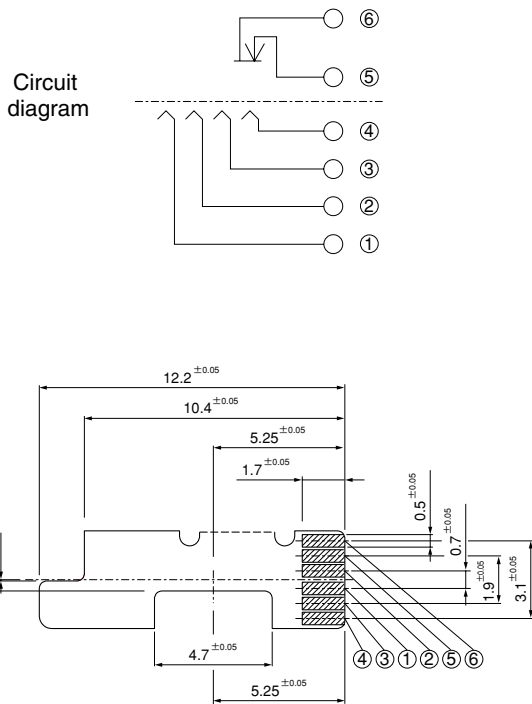
3.5EP Type R



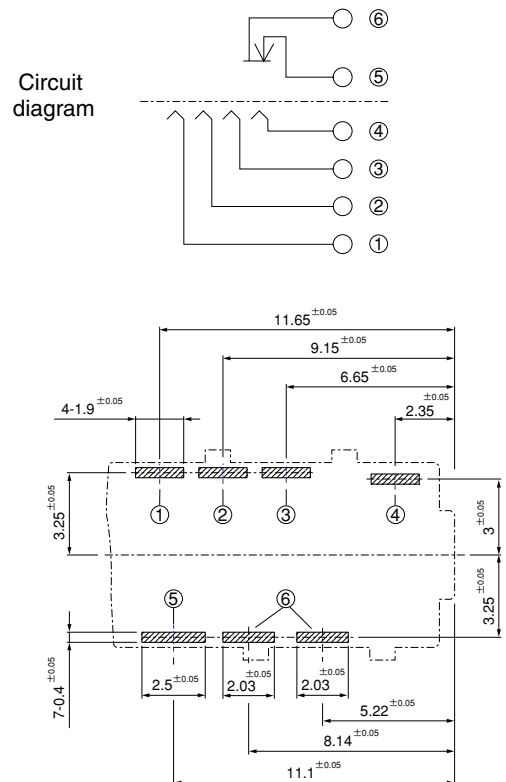
3.5EP SLANT5 Type



3.5EP WP2 Type



3.5EP WP3 Type

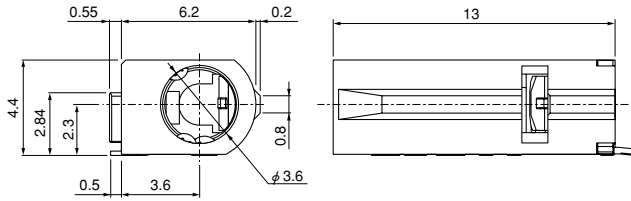


Note: 1. The above figure is the figure viewed from the connector mounting side.
 2. Tolerances are non-cumulative; $\pm 0.05\text{mm}$ for all centers.
 The dimensions above should serve as a guideline. Contact JST for details.

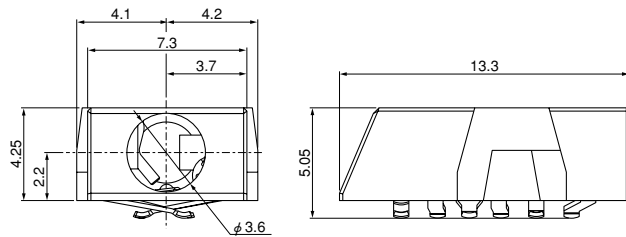
EP CONNECTOR SERIES

Connector

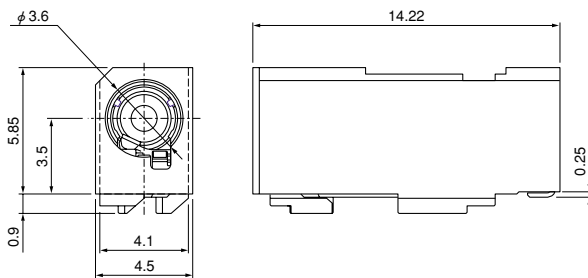
3.5EP Type R



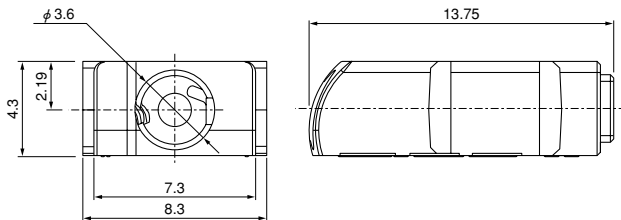
3.5EP SLANT5 Type



3.5EP WP2 Type



3.5EP WP3 Type



| Type | Circuits | Model No. | Q ty / reel |
|-------------|----------|-------------------------|-------------|
| Type R | 6 | 3.5EP-R (HF) | 1,500 |
| SLANT5 Type | | 3.5EP-SL5-C (HF) | 750 |
| WP2 Type | | 3.5EP-WP2-1 (HF) | 1,500 |
| WP3 Type | | 3.5EP-WP3-1 (HF) | 1,500 |

Material and Finish

Contact: Copper alloy, nickel-undercoated, gold-plated
Housing: Thermoplastic resin, UL94-HB, black
Lock pin: Stainless

RoHS compliance