

HIGH TEMPERATURE PRESSURE TRANSMITTER FOR BIOTECHNOLOGY / FOOD-INDUSTRIES

SERIE 35 X HTC

This piezoresistive high temperature transmitter is suited for media temperatures up to 300 °C. The pressure, acting onto the flush diaphragm, is transferred over an oil-filled capillary onto the silicon measuring cell. The capillary has the function of a cooling spiral, allowing media temperatures of up to 300 °C. The temperature of the electronics, which can be read out with the PROG30 software, may not exceed 120 °C. For highly aggressive media, KELLER offers pressure ports in different materials.

Digital Output of Transmitter

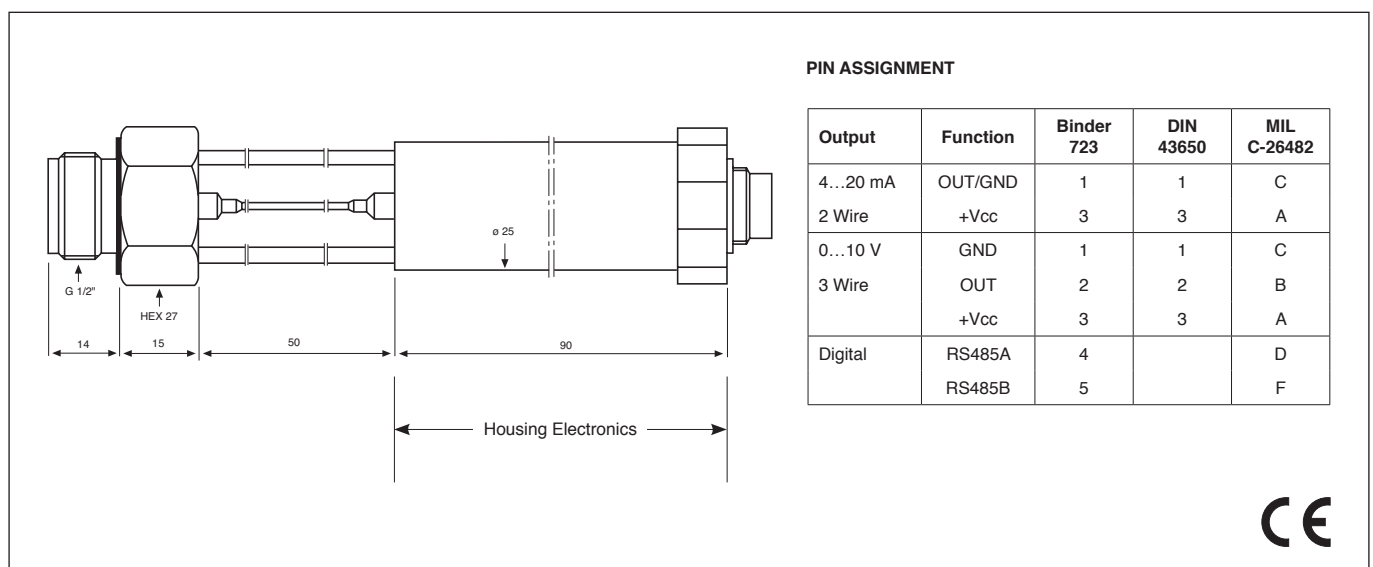
These Series are based on the stable, piezoresistive transducer and a micro-processor electronics with integrated 16 bit A/D converter. Temperature dependencies and non-linearities of the sensor are mathematically compensated. With the READ30 software and the KELLER cable K-107, the calculated pressure can be displayed on a Palmtop, Laptop or PC. The READ30 software also allows the recording of pressure signals and the graphic display on the PC. Up to 128 transmitters can be hooked together to a Bus-system.

Transmitter with Analog Output

The micro-processor integrates a D/A converter of 16 bit for analog signal outputs of 4...20 mA or 0...10 V. The output rate is 100 Hz (adjustable). The digital output is available on all transmitters with analog output.

Programming

With the KELLER software READ30 and PROG30, a RS485 converter (i.e. K-102, K-104 or K-107 from KELLER) and a PC, the pressure can be displayed, the units changed, a new gain or zero set. The analog output can be set to any range within the compensated range.





KELLER

Specifications

	Standard Pressure Ranges (FS) and Overpressure in Bar					
PR 35 X HTC	3	10	30			
PAA 35 X HTC		10	30	100	300	1000
Overpressure	5	20	60	200	400	1100
Output	(digital)	(analog)	(analog)			
Supply (U)	RS 485	4...20 mA (2 Wire)	0...10 V (3 Wire)			
Accuracy, Error Band ¹⁾ (20...300 °C) ²⁾	0,5 %FS	0,5 %FS	0,5 %FS			

¹⁾ Linearity + Hysteresis + Repeatability + Temp. Coeff. + Zero + Span Tolerance

²⁾ Media Temperature (temperature of electronics max. 120 °C)

Linearity (best straight line)	0,05 %FS
True Output Rate	100 Hz
Resolution	0,002 %FS
Long Term Stability typ.	0,2 %FS
Load Resistance (Ω)	<(U-7V) / 0,02A (2-wire) > 5'000 (3-wire)
Electrical Connection	– Binder-Plug 723 (5 pole) – DIN 43650 Plug (4 pole) – MIL C-26482-Plug (6 pole)
Insulation	> 10 MΩ / 50 V
Storage- / Operating Temperature Range	Media: 0...300 °C Electronics: 0...120 °C
Pressure Endurance	10 Million Pressure Cycles 0...100 %FS at 25 °C
Vibration Endurance, IEC 68-2-6	20 g (5...2000 Hz, max. amplitude ± 3 mm)
Shock Endurance	20 g (11 ms)
Protection	IP 65 optional: IP 67
CE-Conformity	EN 61000-6-1 to -6-4
Material in Contact with Media	Stainless Steel 316L (DIN 1.4435) / Copper
Weight	≈ 300 g
Dead Volume Change	< 0,1 mm ³
Mounting	– Horizontal position (carrying-off of heat) – Cooling spiral exposed to room temperature

Remark: – RS485 pins (for digital output and for programming) is available on all types.

Options: – Switch output, programmable via interface
– Special calculations with pressure and temperature
– Different housing-material, oil filling, pressure thread or connector

All intermediate ranges for the analog output are realizable with no surcharge by spreading the standard ranges.

Option: Adjustment directly to intermediate ranges (below 20 pieces against surcharge).

Polynomial Compensation

This uses a mathematical model to derive the precise pressure value (P) from the signals measured by the pressure sensor (S) and the temperature sensor (T). The microprocessor in the transmitter calculates P using the following polynomial:

$$P(S,T) = A(T) \cdot S^0 + B(T) \cdot S^1 + C(T) \cdot S^2 + D(T) \cdot S^3$$

With the following coefficients A(T)...D(T) depending on the temperature:

$$A(T) = A_0 \cdot T^0 + A_1 \cdot T^1 + A_2 \cdot T^2 + A_3 \cdot T^3$$

$$B(T) = B_0 \cdot T^0 + B_1 \cdot T^1 + B_2 \cdot T^2 + B_3 \cdot T^3$$

$$C(T) = C_0 \cdot T^0 + C_1 \cdot T^1 + C_2 \cdot T^2 + C_3 \cdot T^3$$

$$D(T) = D_0 \cdot T^0 + D_1 \cdot T^1 + D_2 \cdot T^2 + D_3 \cdot T^3$$

The transmitter is factory-tested at various levels of pressure and temperature. The corresponding measured values of S, together with the exact pressure and temperature values, allow the coefficients A₀...D₃ to be calculated. These are written into the EEPROM of the microprocessor.

When the pressure transmitter is in service, the microprocessor measures the signals (S) and (T), calculates the coefficients according to the temperature and produces the exact pressure value by solving the P(S,T) equation.

Calculations and conversions are performed at least 400 times per second.

Accessories Series 30

Each Series 30 transmitter also integrates a digital interface (RS485 halfduplex) which you can make use of: Connect the transmitter to a PC or Laptop via a converter RS232-RS485 (i.e. K-102, K-104 or K-107). Two programs are offered:

PROG30: Instrument Settings

- Call up of information (pressure- and temperature range, version of software etc.)
- Indication of actual pressure value
- Selection of the units
- Setting of a new zero and gain for the transmitter
- Reprogramming of the analog output (i.e. different unit, other pressure range)
- Programming of the switch output
- Changing the output rate

You can also tie up the transmitters into your own software. You have then a documentation, a DLL and numerous examples at your disposal.

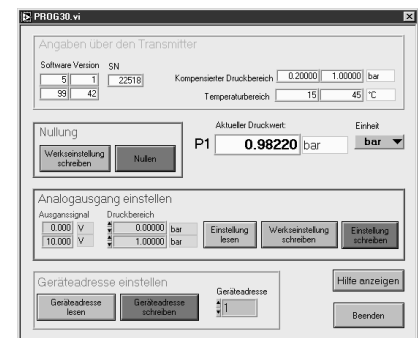
Changing the plug connector (optional)

Laboratory applications require the same transmitter to be used at different measurement points with different electrical connection arrangements. To accommodate such applications, KELLER can supply different connectors matching with the internal standard plug. This makes it easy to exchange the electrical connector of the transmitter.

READ30: Data collection with graphs

- Fast read-out and viewing of the pressure signals in a graph
- Documentation of dynamic measurements
- Up to 16 transmitters on one serial connection (Bus-operation)

Software PROG30



Subject to alterations

08/2016

KELLER AG für Druckmesstechnik
KELLER Ges. für Druckmesstechnik mbH

St. Gallerstrasse 119
Schwarzwaldstrasse 17

CH-8404 Winterthur
D-79798 Jestetten

Tel. +41 (0)52 - 235 25 25
Tel. +49 (0)7745 - 9214 - 0

Fax +41 (0)52 - 235 25 00
Fax +49 (0)7745 - 9214 - 60

Companies approved to ISO 9001

www.keller-druck.com