

# Accessories

## Socket box Details

### Dimensions / Details

#### Socket box type 926.1



*description:*

for plug-in connection in

*suitable for:*

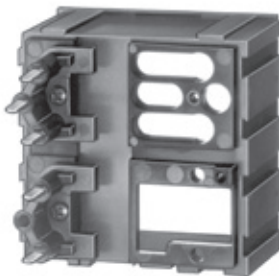
MVs 16

transparent

*Order-No.*

**G008433**

#### Socket box type 946.1



*description:*

for plug-in connection in  
front bezel F2B

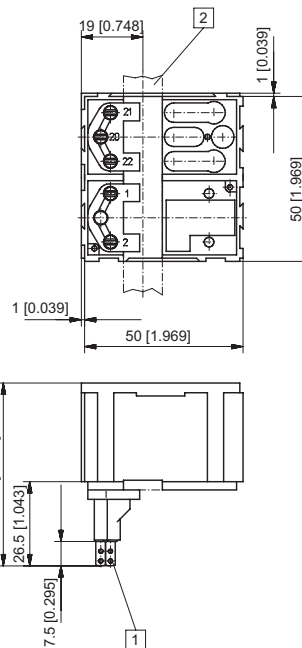
*suitable for:*

BVa 15, HVa 15

black

*Order-No.*

**G008439**



1 Flat pin 0.8 x 2.8 [0.032 x 0.11"] silver-plated

2 Fixing strip 3 x 12 mm [0.12 x 0.47"]