

Southern California Manufacturers' Line Card

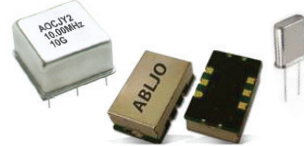
Southern California Manufacturers' Line Card



Heat Sinks: Bonded Fin, Liquid Cold Plates, Precision Temperature Control Liquid Cooling System, Integrated Heat Pipe Assemblies, Folded Fin Assemblies, Forced Convection Coolers. DC Brushless Fans & Blowers.
<http://www.aavid.com> • (805) 764-6208 • aavid@lecc.com



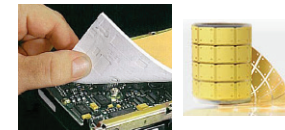
High quality Microprocessor Crystals, Crystal Oscillators, SAW Devices, and a complete line of Magnetic components. Provides customers with high quality products, competitive pricing, timely delivery, reliable engineering & technical support and the flexibility to change production requirements on short notice.
<http://www.abracon.com> • (858) 605-7606 • abracon@lecc.com



AC/DC Power Supplies with output ranges from 1W to 24,000W. Package styles include Open Frame, Enclosed, DIN-Rail Mount, and External. DC/DC Products: Converters (BMP), Industry-Standard Bricks, and Point of Loads. High-Powered 300Vin DC/DC Solutions. Unique Convection/Conduction-Mounted Power Supplies. Modified-standard and Custom Solutions also available.
<http://www.artesyn.com> • (858) 605-7605 • artesyn@lecc.com



Sil-Pad; Thermally Conductive Interface Materials, Bond Ply & Liqui-bond; Thermally Conductive Adhesives, Gap pads; Thermally Conductive Gap Filling Materials, Hi-Flow; Phase Change Interface Materials, TIC; Thermal Interface Compounds, Thermal Clad; PCB with Insulated Metal Substrates.
<http://www.bergquistcompany.com> • (714) 765-5626 • bergquist@lecc.com



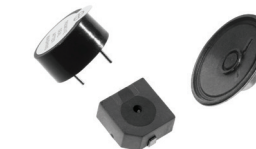
Switches: Tact, Slide, Rocker, Detect, Toggle, DIP, Rotary, Dome, Key, Push-Button, Thumbwheel, NAV-Switch
<http://www.ckswitches.com> • (714) 795-5625 • candk@lecc.com



Protective Products: Plastic, Vinyl & Rubber Caps, Plugs, Tubing, Containers, Netting, Wraps and Edge Liners Precision Masking Products.
<http://www.caplugs.com> • (714) 795-5624 • caplugs@lecc.com



DB Unlimited has the largest and most comprehensive offering of audio components in the industry ranging from simple indicators, transducers, and speakers to the latest MEMS technology used in our silicon microphones. In addition to our standard products, we offer custom design solutions allowing us to partner with our customers to solve their most challenging acoustic designs.
<http://www.dbunlimitedco.com> • (714) 795-5624 • dbunlimited@lecc.com



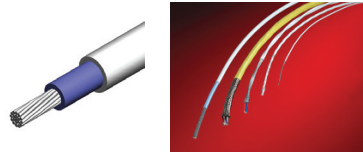
Circuit Board Indicators, Prism, Lightpipes, Surface Mount LED Indicators, LED Panel Mount Indicators, Neon/Incandescent, Military-Qualified Indicators & Optical Lenses.
<http://www.dialight.com> • (858) 605-7608 • dialight@lecc.com



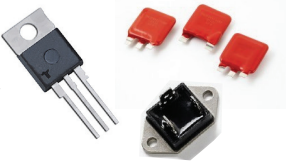
Connectors: Circular, Compact Flash, D Subminiature, Fiber Optic, Filter, Hermetic, Harsh Environment & Oil, Media & Memory, Microminiature, Mobile Communications, Plastic/Universal, Printed Circuit Board, Rack & Panel, RF, Smart Card, Transportation, USB/FireWire, Zero Insertion Force.
<http://www.ittcannon.com> • (805) 764-6208 • ittcannon@lecc.com



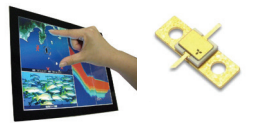
Cable industry's leading High technology wire company, specializing in the use of electron beam crosslinked thermosets for wire insulation, crosslink irradiation and fiber optic. Judd Wire meets the needs of the wire and cable industry for high-performance products serving high reliability and harsh environments. Manufactures electronic wire and cable in over 100 styles.
<http://www.juddwire.com> • (858) 605-7605 • juddwire@lecc.com



Circuit protection components backed by global application expertise: Fuses, PTCs, Varistors, Gas Discharge Tubes (GDTs), SIDACTor® devices, Silicon Protection Array (SPA) devices, Thyristors, TVS Diodes, PulseGuard® ESD Suppressors, PLED LED array protectors, Lighting Surge Protection Modules, IGBTs, Reed Switches, Reed Sensors, Reed Relays.
<http://www.littelfuse.com> • (805) 764-6208 • littelfuse@lecc.com



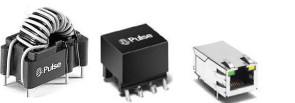
Mitsubishi Electric's thin film transistor liquid crystal display (TFT-LCD) panels and modules are produced utilizing advanced imaging and color reproduction technologies and come in a variety of sizes from 2" to 19". Our integrated assembly method also allows us to provide touch panel options for our LCD modules.
<http://www.mitsubishielectric.com> • (858) 605-7608 • mitsubishi@lecc.com



Electrolytic, Polymer, Film, Hybrid, & SP-Capacitors. Resistors, Chip Inductors, Filters & Resonators. Electromechanical Devices: Slide, Light-touch Switches & Encoders. RF modules for Bluetooth, SNAP, ISM & Wi-Fi. Relays: Signal, High Frequency, Power, Automotive, Solid State, PhotoMOS. Sensors: Passive IR, Napica Light Sensors, Motion Sensors.
<http://na.industrial.panasonic.com> • (714) 795-5626 • panasonic@lecc.com



Inductors, transformers, current sense magnetics, common mode chokes. LAN magnetics, PulseJack ICs for 10BASE-T, up to 10GBase-T, plus VoIP and PoE+ applications. Connectors include RJ45, RJ11, keystone jack CAT4e/6, SFP+ and XFP connectors cages. Antennas: internal, external, indoor, and outdoor (Wi-Fi, BLE, LTE, GPS - Dual-band, Multi-band).
<http://www.pulseelectronics.com> • (858) 605-7608 • pulse@lecc.com



LED Components: High Power, Low Power, Chip-Scale Package (CSP), Chip-On- Board (COB). Automotive LEDs (AEC-Q101 qualified & meets ECE automotive color requirements). LED Engines: Ambient, Outdoor, Downlight. LED Drivers: Indoor and Outdoor from 15W - 200W. Wireless Smart Lighting Solutions.
<http://www.samsungled.com> • (858) 605-7605 • samsung@lecc.com



Offers a broad selection of products for lighting, medical, GPS tracking / data acquisition, security, military, instrumentation & broadcast applications. Specialize in quick-turn, low-volume, custom-engineered connectors and cable assemblies for harsh environment applications.
<http://www.switchcraft.com> • (714) 795-5624 • switchcraft@lecc.com



Corcom: EMI/RFI Power Line Filters, Power Entry Modules, DC Filters, DC Power Entry Modules and Filtered Modular Jacks.
<http://www.corcom.com> • (714) 795-5625 • corcom@lecc.com



The PREMIER Manufacturers' Representative in the West

with 2 Locations in Southern California to Serve You

