



## LEDiL's 2X2MX modules

Maximize your creativity without compromising compatibility

- LEDiL's new 90 x 90 mm lens module family for super high power LEDs up to 7070 package sizes
- Modular structure enables wide compatibility and easy modification
- One luminaire structure can be used in different applications by changing the lens module
- 2X2MX modules have an integrated silicone gasket which provides protection from dirt and water up to IP67
- Future proof solution designed to always accommodate latest evolution of the LEDs
- Spacing of the LEDs is optimized for optical performance and viable thermal design. This helps to achieve sustainable and long lasting product design.

Visit [www.ledil.com/2x2mx](http://www.ledil.com/2x2mx)  
for full family listing

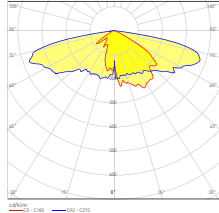


2X2MX is a registered trademark of LEDiL<sup>®</sup>

## STRADA-2X2MX

## CS14632\_STRADA-2X2MX-DWC

- ME3-4 for two lane setups at 8 m mounting height (R2 and R3 coating, with or without flat glass)
- ME1-2 freeway at 10-12 m mounting height with flat glass
- ME 5-6 with long pole distance especially with flat glass
- Suitable for many S class situations, such as for residential streets

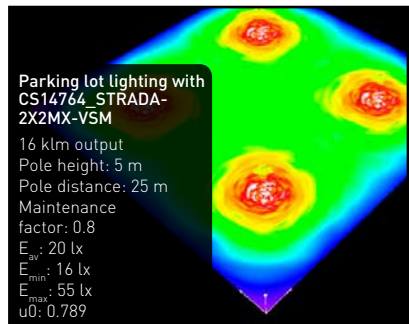
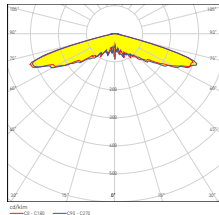


## UPCOMING STRADA-2X2MX OPTICS

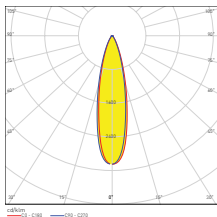
- **CS14841\_STRADA-2X2MX-SCL**  
S class situations, such as residential streets, bicycle lanes and pedestrian walkways

## CS14764\_STRADA-2X2MX-VSM

- Symmetrical wide square beam (IESNA Type V Short)
- Typical luminaire classifying IESNA "Semi Cutoff" or G1-G2 luminous intensity class (EN13201)
- Typical applications: Wide area lighting, pedestrian areas, parking lots, street lighting

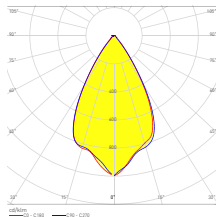


## HB-2X2MX



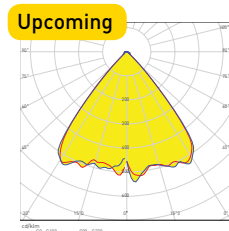
## CS14840\_HB-2X2MX-M

- Typical FWHM: 30°
- Typical efficiency: 91%



## CS14713\_HB-2X2MX-W

- Typical FWHM: 58°
- Typical efficiency: 90%



## CS14839\_HB-2X2MX-WWW