

ME4a Street¹⁾ – Application Case

Application requirements

Target application:	Street
Street setup:	W 7m; 2 lanes; Tarmac R3
Luminaire setup:	8m High; 39m distance; 0.3m overhang; no arm
Applicable Specifications:	EN 13201; ME4a

C12362_Strada-2x2-DWC²⁾

Designed for street lighting

- Asymmetric light distribution
- Wide batwing light distribution
- Good longitudinal uniformity control
- Low glare

Optimal mechanical design

- Environmental sealing possible
- Multi-lens module
- Low profile lenses

Over 90% optical efficiency

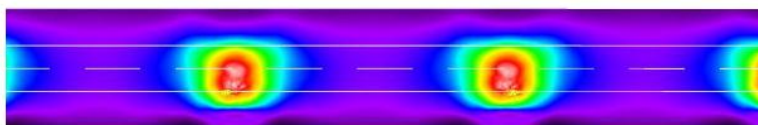
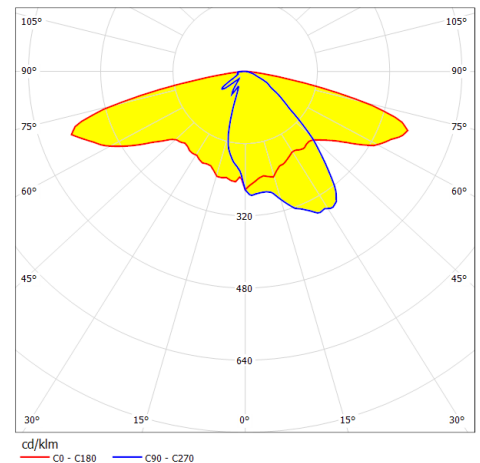
- Optical grade PMMA lens
- Extra glass cover not needed



Results with example lens

LED output per luminaire: 6700 lumens

ME4a requirements passed with given luminaire setup



L_{av} [cd/m ²]	U0	UI	TI [%]	SR
0.76	0.42	0.61	15	0.56
≥ 0.75	≥ 0.40	≥ 0.60	≤ 15	≥ 0.50
✓	✓	✓	✓	✓

1) ME4a Street refers to a street lighting setup designed to pass ME4a requirements on EN 13201 standard.

2) Lens specified in the example is not the only solution for specified application. LEDIL offers other lenses also suitable for the application.