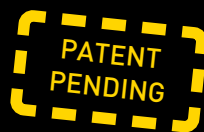




## STELLA family – Silicone molded lenses



- Functional products, the included installation frame designed to make implementation in a fixture quick & easy
- Excellent thermal properties with very good UV-withstanding and IP-65 rating
- The properties of silicone optics can offer substantial savings in fixture manufacturing costs
- Made in Finland

### **FN13323\_STELLA-A**

- Silicone street lighting lens
- IESNA Type 3 short/medium
- Optimized for COB's LES sizes 13-25
- Typical efficiency 92%

### **FN14074\_STELLA-HB**

- Silicone High bay lens
- Warehouse and outdoor applications
- Works with COB's up to LES size 50
- Typical efficiency 93%

### **FN14645\_STELLA-T4**

- Silicone street lighting lens
- Type IV light distribution with wide variety of LES sizes
- Special features for backlight minimization
- Special features to prevent house-side peaks
- Precise light control and good cut-off
- Parking lots and area lighting
- Typical efficiency 92%

### **FN14720\_STELLA-FRESNEL**

- Narrow spot fresnel for high power COB's with LES size approx. 22 mm or less
- Compatible with existing STELLA range
- Ideal for compact sized high bay, spot and projector applications with high mounting heights

### **FN14976\_STELLA-DWC2**

- Silicone street lighting lens
- Type III lighting with variety of LES sizes
- No house-side peaks
- Precise light control and good cut-off

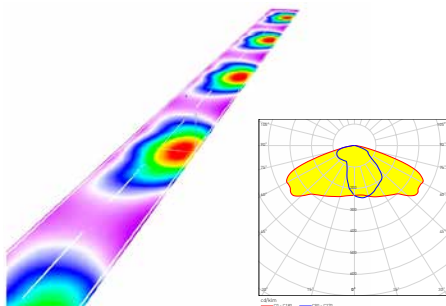
Visit [www.ledil.com/stellafamily](http://www.ledil.com/stellafamily)  
for full family listing



## APPLICATION EXAMPLE

### Silicone street lighting optic STELLA-A

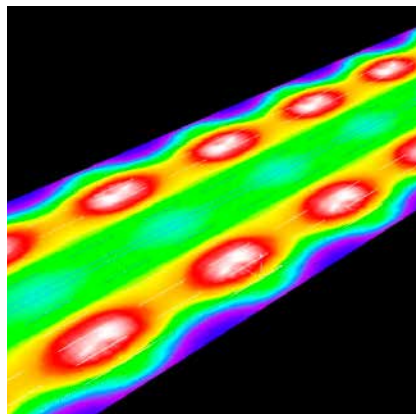
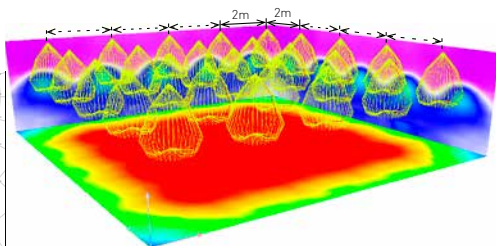
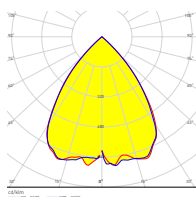
- Luminous flux (Luminaire): 5519 lm
- Luminous flux (Lamps): 6000 lm
- Arrangement: Single row, bottom
- Pole distance: 30 m
- Mounting height: 6 m
- Height: 6 m
- Overhang: 1 m
- Boom length: 1.5 m
- Maximum luminous intensities at 70°: 471 cd/klm at 80°: 175 cd/klm at 90°: 15 cd/klm



	$L_{av}$ [cd/m <sup>2</sup> ]	$L_{av}/L_{min}$	$L_{max}/L_{min}$	$L_v \text{ max}/L_{av}$
Calculated values:	0.7	3.0	6.9	0.3
Required values according to class:	$\geq 0.6$	$\leq 6.0$	$\leq 10.0$	$\leq 0.4$
Fulfilled/Not fulfilled:	✓	✓	✓	✓

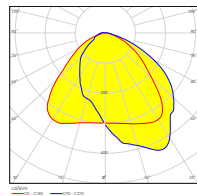
### STELLA-HB application example

- 25 pcs of STELLA-HB optics installed
- Install grid 2 x 2 m
- Mounting height 2.8 m
- Luminous flux 1500 lm per lamp
- $E_{av}$ : 311 lx,  $E_{max}$ : 332 lx,  $U_0$ : 0.825



### Street lighting example with STELLA-T4

- Pole distance: 24 m
- LED: CXA2590
- 11 000 lumens per luminaire ( $\theta_{max}$ : 1,2 A currency)
- Pole height: 12 m
- 41 m wide freeway, 12 lanes
- Two-sided lamp arrangement
- Selected Lighting Class: ME4a



✓All lighting performance requirements are met.

$L_{av}$ [cd/m <sup>2</sup> ]	$U_0$	$U_1$	$TI$ (%)	$SR$
0.77	0.58	0.85	2	0.67
$\geq 0.75$	$\geq 0.40$	$\geq 0.60$	$\leq 15$	$\geq 0.50$
✓	✓	✓	✓	✓