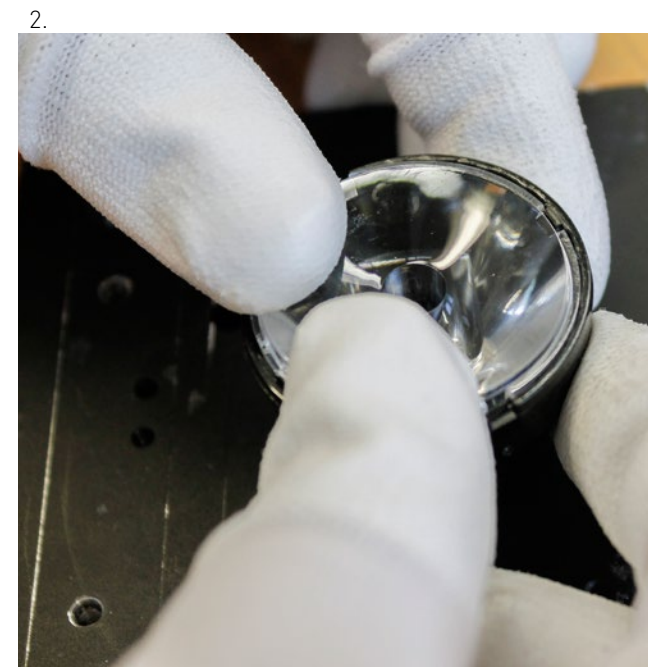
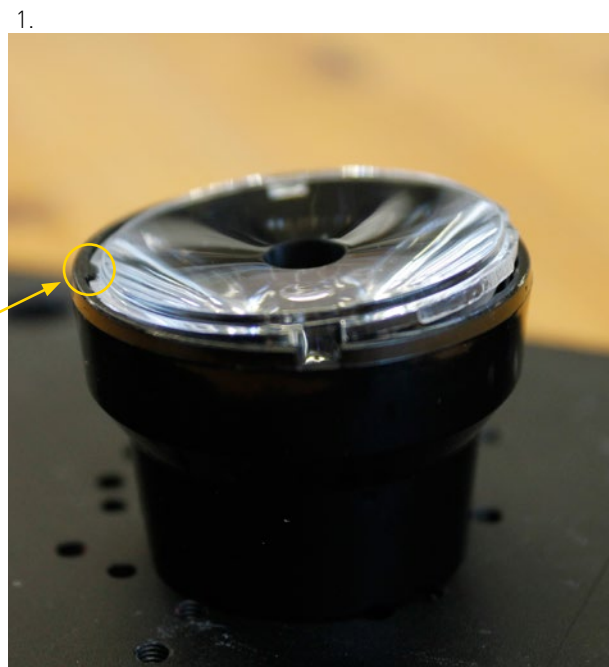


IRIS - Lens assembly



1. Start by tilting the lens under one of the holder two clips.

(Notice that lens can only be rotated 2,5° while under the clip)

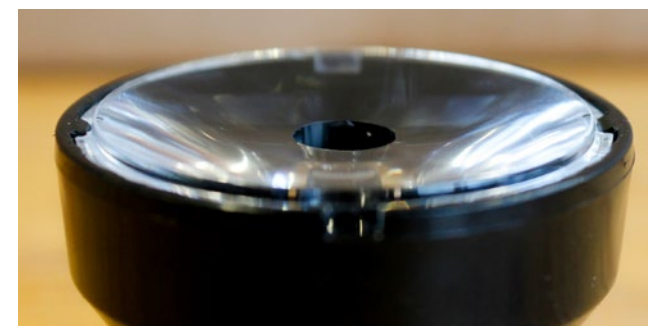
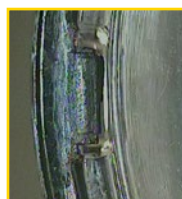
2. Press lens down using both thumbs while holding the assembly in place.

3. Check that the lens is evenly in place.

Reccomended screws for holder fastening:

M2,5 DIN7985, ISO 7045

Maximum screw head height 2,1mm



For more details about the heat sink machining, chemicals, heat control etc. please refer to the LEDiL Installation Guide: www.ledil.com/installation_guide

The information contained herein is the property of LEDiL Oy, Salorankatu 10, FI-24240 SALO, Finland and is subject to change without notice.

Please visit www.ledil.com for additional information, such as the latest photometric files, 3D mechanical models, and application notes relating to handling, gluing and taping.