



## SHELLY – Shelf lighting the LEDiL way



In quality retail lighting the challenge is how to direct the customer focus correctly. To help you with this, LEDiL developed two versions of SHELLY for shelf lighting.

- SHELLY-T-6X1-N for overall illumination of goods on shelves and in display counters
- SHELLY-T-6X1-WAS designed to light the back wall of the shelf
- Both versions feature modular six high power LED design
- 20mm LED pitch as in LEDiL's STRADA-6x1 family

- Smart breakable design, SHELLY can be broken into single lenses if needed
- Tilted beam reduces glaring, wideness provides even and pleasant illumination
- Dimensions ~120x20x8 mm

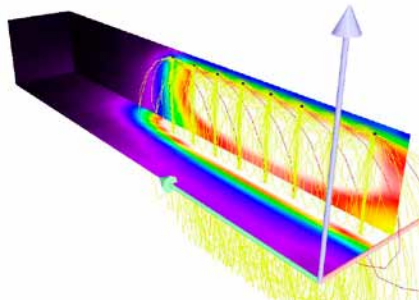


SHELLY-T-6X1-N



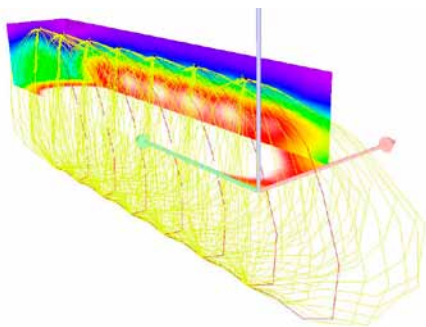
SHELLY-T-6X1-WAS

## SHELLY-T application example



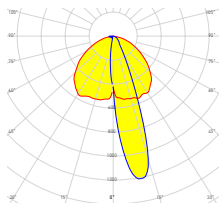
### SHELLY-T-6X1-WAS

- 50x50 cm shelf space
- 20 cm interval between lamps, each distanced 10 cm from the back wall
- Each lamp is driven to 300 lm flux output
- $E_{av}$ =1374 lx,  $E_{max}$ =1764 lx

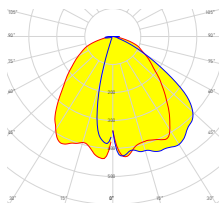


### SHELLY-T-6X1-N

- 50x50 cm shelf space
- 40 cm interval between lamps, each indented 10 cm away from the front
- Each lamp is driven to 500 lm flux output
- $E_{av}$ =1321 lx,  
 $E_{max}$ =1565 lx,  $U_0$ =0.676



SHELLY-T-6X1-WAS



SHELLY-T-6X1-N

