



STRADA-2X2MXS

90x90 mm platform now in silicone for up to IP67 and high temperature applications



The STRADA-2X2MX platform has now been made available in a more durable silicone. This brings natural resistance to high temperatures, UV radiation and impacts. Combined with LEDiL's efficient industry leading optical design and standardized modular footprint you can have a multipurposed luminaire design that not only fulfills all lighting requirements but is built to last - even in the most extreme environments.



FEATURES

- Standard 90x90 mm 2X2MX platform
- Manufactured from optical grade silicone
- Up to IP67 ingress protection
- Comes with a black installation frame
- 8 screw fastening

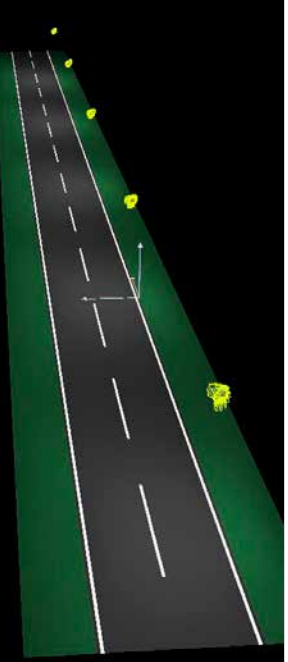
TYPICAL APPLICATIONS

- Both indoor and outdoor applications
- Halls, arenas, roads, pavements etc.
- Applications that require high lumen outputs

DESIGN EXAMPLE

STRADA-2X2MXS-DWC: Great luminance & good illuminance uniformity

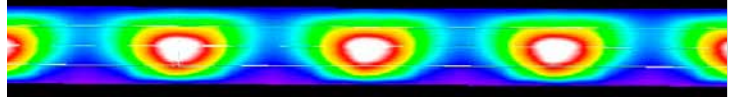
Lighting Class:	ME4a
Optics:	STRADA-2X2MXS-DWC2
Cutoff classification:	Semicutoff
Distribution:	Type III, Medium
Road width:	7 m
Number of lanes:	2
Pole distance ratio:	1:4
Maintenance factor:	0.8
Luminous flux (Luminaire):	6405 lm
Power (Luminaire):	53 W
Arrangement:	Single row, bottom
Pole distance:	32 m
Mounting height:	8 m
Overhang:	0.5 m
Boom angle:	0°



All lighting performance requirements are met

L_{av} [cd/m ²]	U0	UI	TI (%)	SR
0.75	0.56	0.79	11	0.55
≥0.75	≥0.40	≥0.60	≤15	≥0.50
✓	✓	✓	✓	✓

RESULTS:	
Average:	12 lx
Min:	5 lx
Max:	21 lx
u0:	0.43

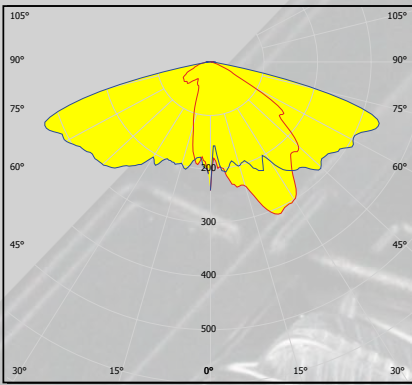




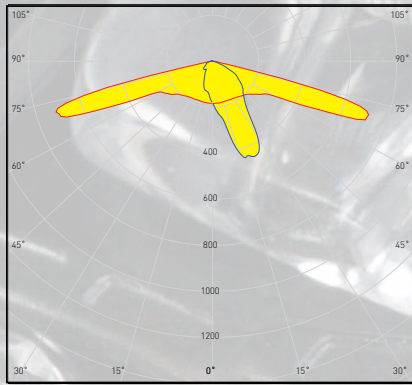
STRADA-2X2MXS FAMILY

COMPATIBILITY

- Up to 7070 size LED packages
- A range of 2X2MX compliant heatsinks and PCBs available from selected ecosystem partners



Asymmetric



Asymmetric

STRADA-2X2MXS-DWC2

Dimensions: 90x90 mm
Height: 14 mm
Typical efficiency: 92%

STRADA-2X2MXS-T2

Dimensions: 90x90 mm
Height: 12,57 mm
Typical efficiency: 91%

DESIGN EXAMPLE

STRADA-2X2MXS-T2 – USA collector road:
 Great illuminance & good luminance

Lighting Class: Collector medium
 pedestrian conflict (USA)

Optics: STRADA-2X2MXS-T2

Cutoff classification: Cutoff

Distribution: Type II, Medium

Road width: 10.5 m

Number of lanes: 3

Pole distance ratio: 1:6

Maintenance factor: 0.8

Luminous flux (Luminaire): 11832 lm

Power (Luminaire): 100 W

Arrangement: Single row, bottom

Pole distance: 60 m

Mounting height: 10 m

Overhang: 1 m

Boom angle: 0°

All lighting performance requirements are met

E_{av} (R3) [lx]	E_{av}/E_{min}	L_{vmax}/L_{av}
10.0	2.8	0.4
≥9.0	≤4.0	≤0.4
✓	✓	✓

RESULTS:

Average:	10 lx
Min:	3.6 lx
Max:	34 lx
u0:	0.36

ORDERING INFORMATION

Consult www.ledil.com/2x2mxs for ordering codes and latest product specifications, which may vary by LED.