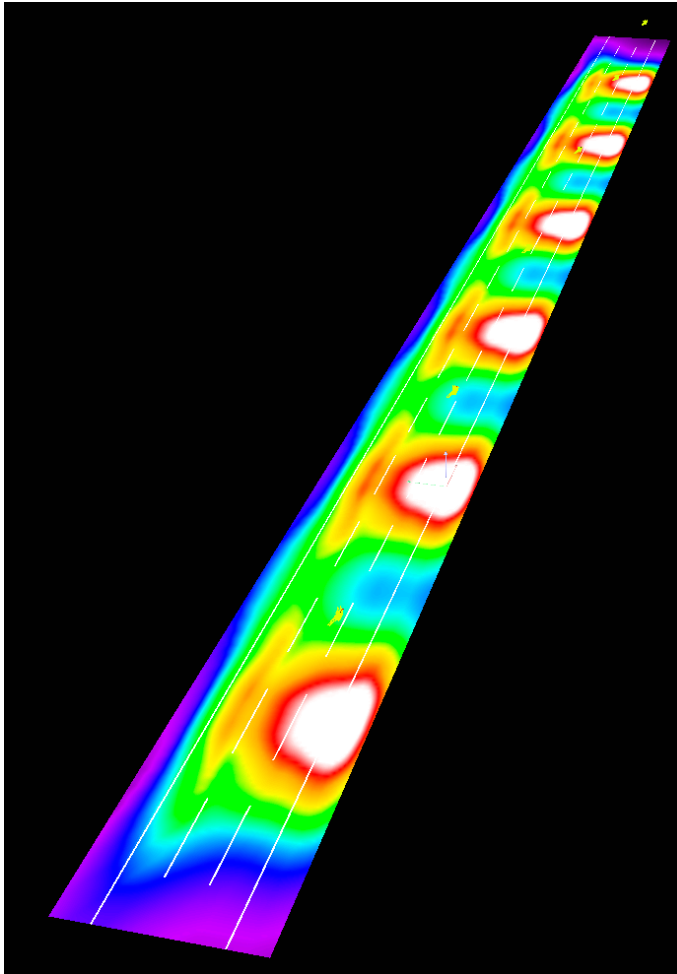




Typical Application Example

Application simulation



Simulated results:

Luminous flux (luminaire): 28 779 lm
 Luminaire wattage: 210 W
 Arrangement: Single row, bottom
 Road width: 10.5 m
 Street coating: R3
 Pole Distance: 37 m
 Mounting height: 12 m

Maximum luminous intensities
 at 70°: 807 cd/klm
 at 80°: 108 cd/klm
 at 90°: 28 cd/klm

Selected lighting class: ME1

	L_{av} (cd/m ²)	U0	UI	TI (%)	SR
Calculated values	2.04	0.58	0.72	10	0.67
Required values according to class	≥2.00	≥0.40	≥0.70	≤10	≥0.50
Fullfilled/ Not fullfilled	✓	✓	✓	✓	✓

Optics used

CS14144_STRADA-IP-2X6-ME

- Dimensions: 173 x 71.4 mm
- Height: 8.42 mm
- Typical efficiency: 94%
- Precision-molded from optical grade PMMA – UL94 HB rated material with operating rating -40°C to +80°C

