

High Bay ¹⁾ – Application Case

Application requirements

Target application:	Warehouse
Target dimensions:	L 30m; W 60m; H 12m
Luminaire information:	6m grid; 12m high; 50 units
Illuminance requirements:	$E_{avg} \geq 300\text{lux}$; $E_{min}/E_{avg} \geq 0.4$
Applicable Specifications:	Design Lights Consortium

C12361_Strada-2x2-HB²⁾

Meets DLC high bay requirements

- 70% lm in 0°-60° zone
- 35% lm in 20°-50° zone.

Optimal light distribution

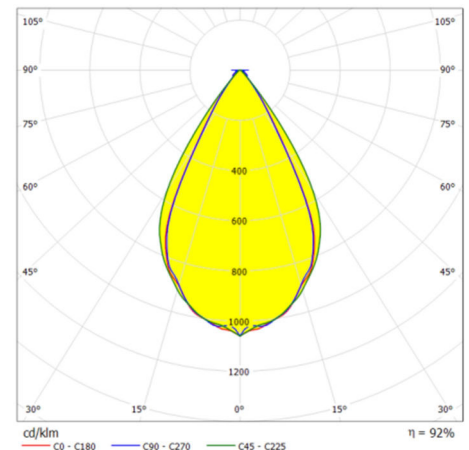
- Rectangular pattern
- FWHM ~55°
- Low glare

Optimal mechanical design

- Environmental sealing possible
- Automated assembly markings
- LED spacing for heat management

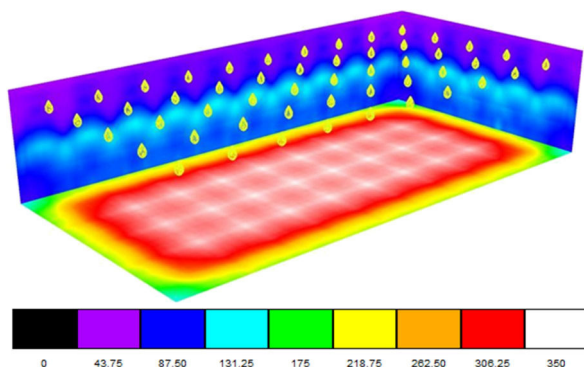
Over 90% optical efficiency

- Optical grade PMMA lens
- Extra glass cover not needed



Results with example lens

- LED output per luminaire: 15,000 lumen
- Average illuminance: 306 lux
- Average uniformity: 0.47



1) High bay refers to lighting designed typically for industrial applications with height above 25feet (7.6m).

2) Lens specified in the example is not the only solution for specified application. LEDIL offers other lenses also suitable for the application.