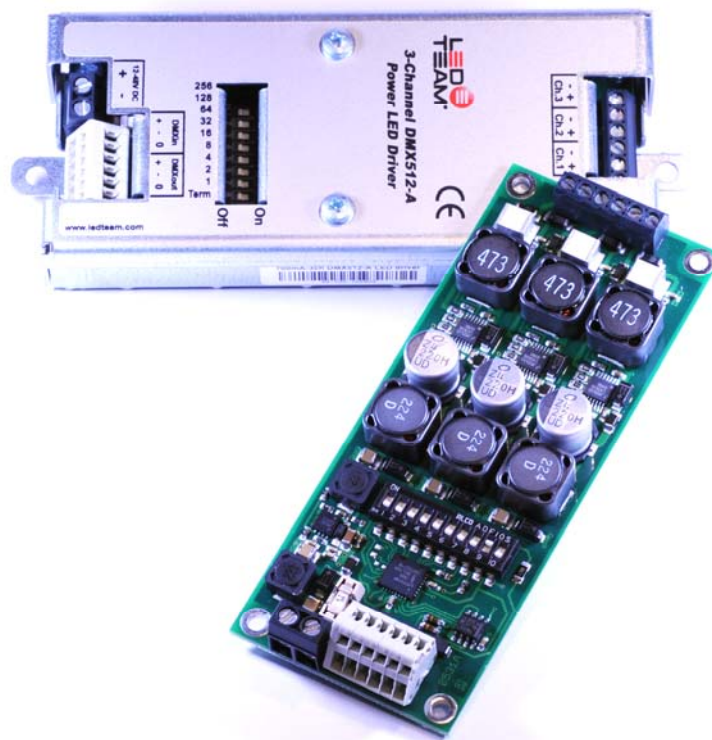


High Efficient 3 Channel DMX512-A Power LED drivers

The Alto-II-350 and Alto-II-700 are compact, highly efficient 3 Channel DMX512-A drivers, especially developed to drive strings of Power LEDs.



Main features:

- 3 Output Channels
- Constant current outputs
- Power Supply voltage : 12V-48V DC
- Up to 14 power LEDs in series per channel
- Logarithmic LED dimming through PWM
- DMX512-A compatible
- Auto running modes available through DIP switch
- Different versions available (AltoII350 = 350mA per channel, AltoII700 = 700mA per channel)
- Very compact design

- Extremely stable output current
- No audible noise
- High efficiency
- PCB and Cased versions
- Easy to install

Typical Applications:

- RGB Colour mixing
- Architectural lighting
- Signage
- Cove lighting
- Flood Lighting
- Landscape lighting



Specifications:

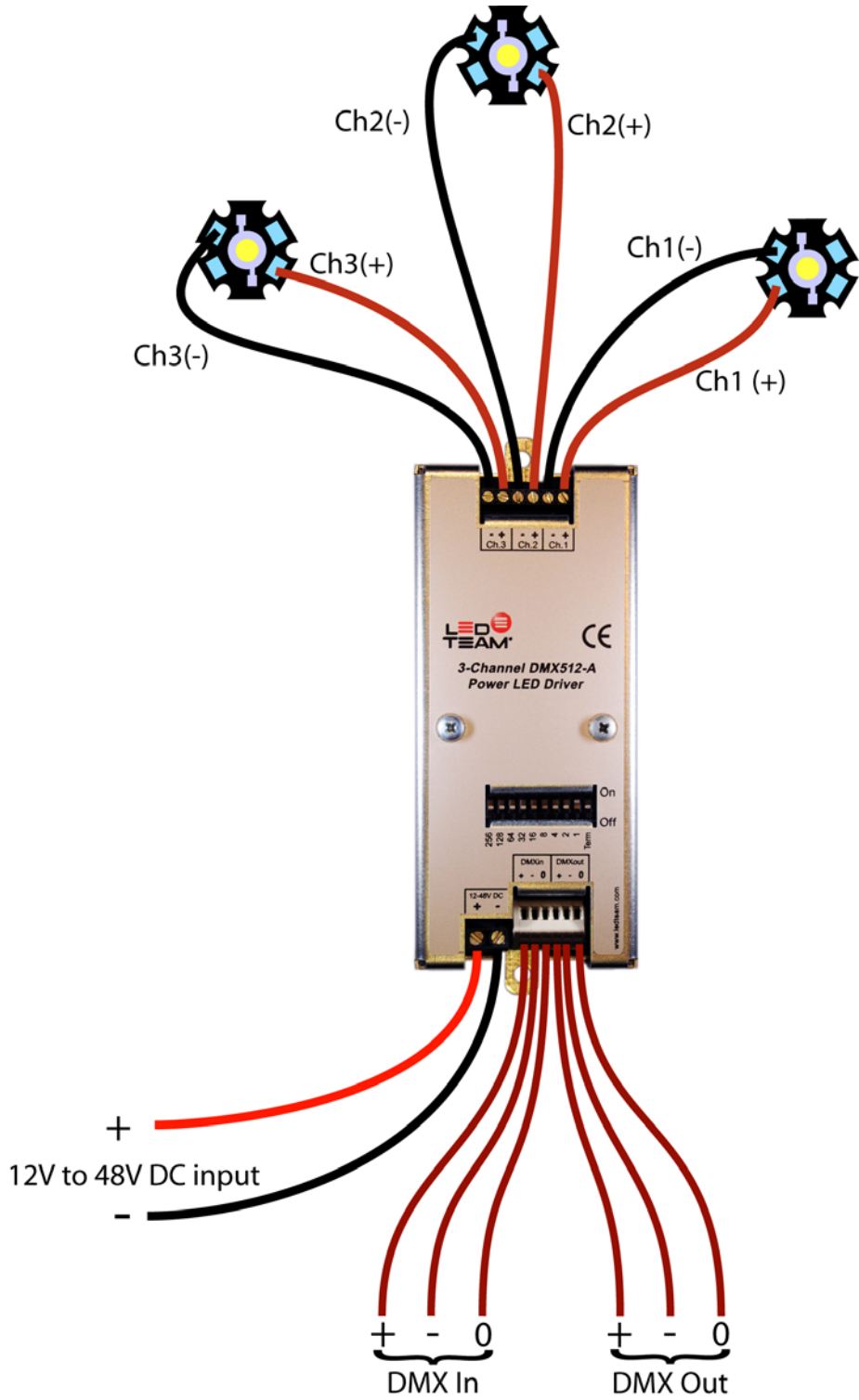
| | |
|-------------------------------|---|
| Input voltage range | : 12 - 48VDC (Input DC voltage should be at least 5V higher than the maximum forward voltage over the LED strings) |
| Output channels | : 3 |
| Output Current | : 350mA per channel (Alto350) 700mA per channel (Alto700) |
| Control protocol | : DMX512-A |
| Address range | : 1-506 through DIP switch |
| Special addresses | : 511 = Auto-running colour change 510 = All channels full on 509 = Channel 3 full on, channels 1 & 2 off 508 = Channel 2 full on, channels 1 & 3 off 507 = Channel 1 full on, channels 2 & 3 off |
| DMX Terminator | : Built-in, accessible through DIP switch position 10 |
| Dimming method | : PWM (32bit per channel) |
| PWM frequency | : 240Hz |
| Operating ambient temperature | : -10°C to +40°C |
| Storage ambient temperature | : -20°C to +70°C |
| Dimensions | : 110 x 45 x 16 mm (PCB model) 133 x 52 x 23,5 mm (cased version) |
| Miscellaneous | : High quality components Designed and manufactured in Belgium |
| International standards | : EN55015 (CISPR15) IEC61000-4-2 (Cased Version) IEC61000-4-4 |

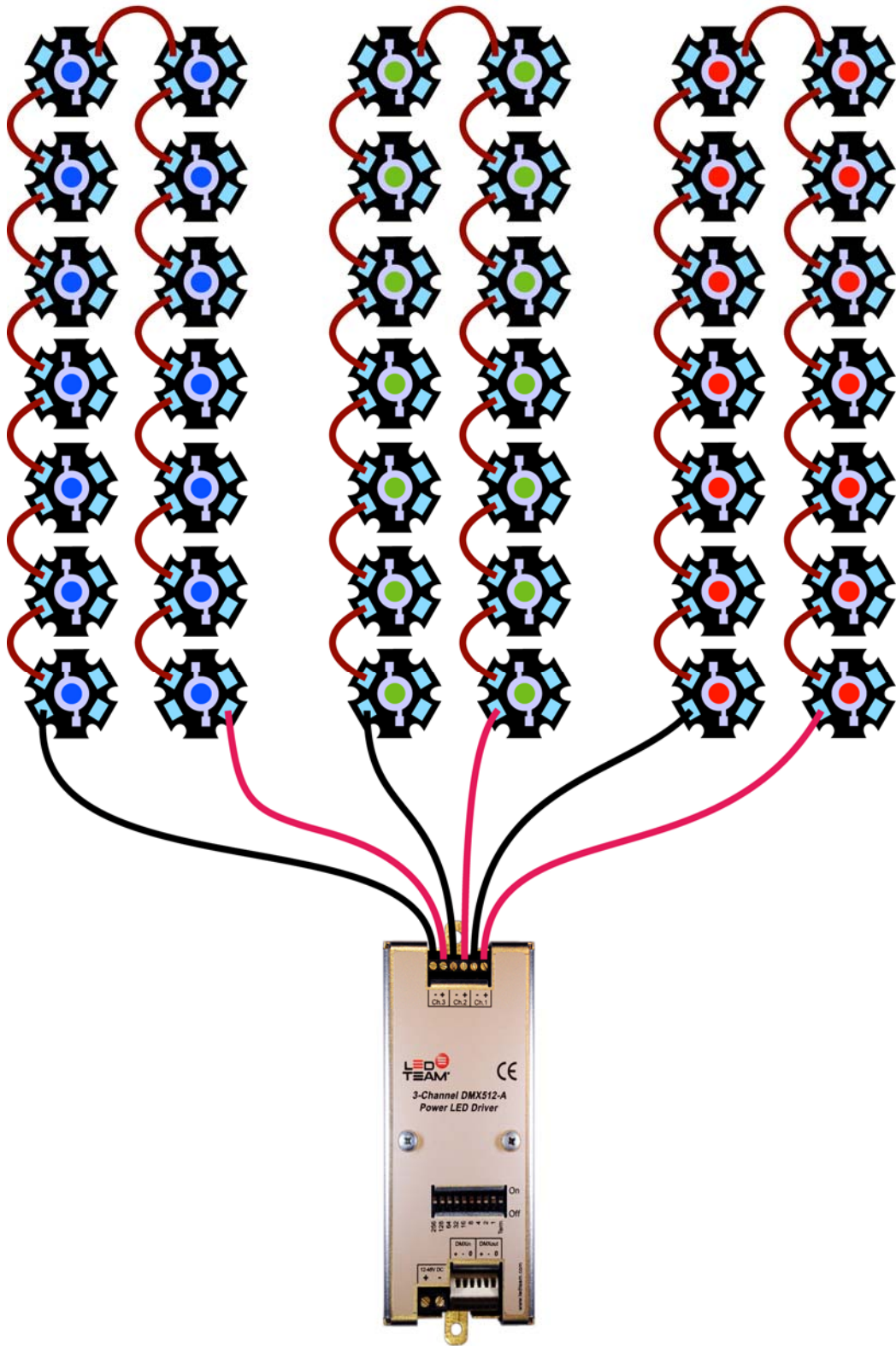
Ordering Info:

When ordering or referring to a specific Alto product, please use the following product numbering:

| | |
|-------------|------------------------------|
| LT-AII350-P | : Alto-II-350, PCB version |
| LT-AII350-C | : Alto-II-350, cased version |
| LT-AII700-P | : Alto-II-700, PCB version |
| LT-AII700-C | : Alto-II-700, cased version |

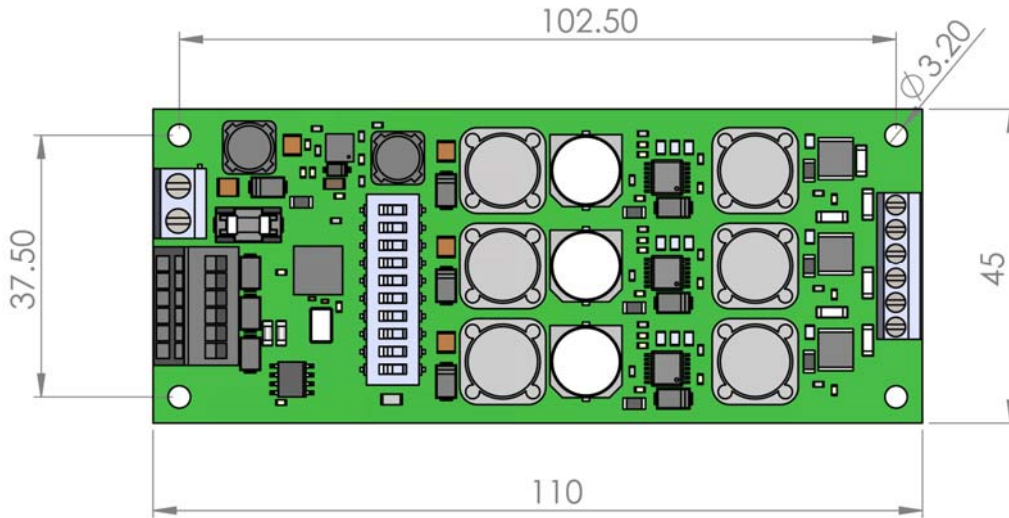
Driver Connections :



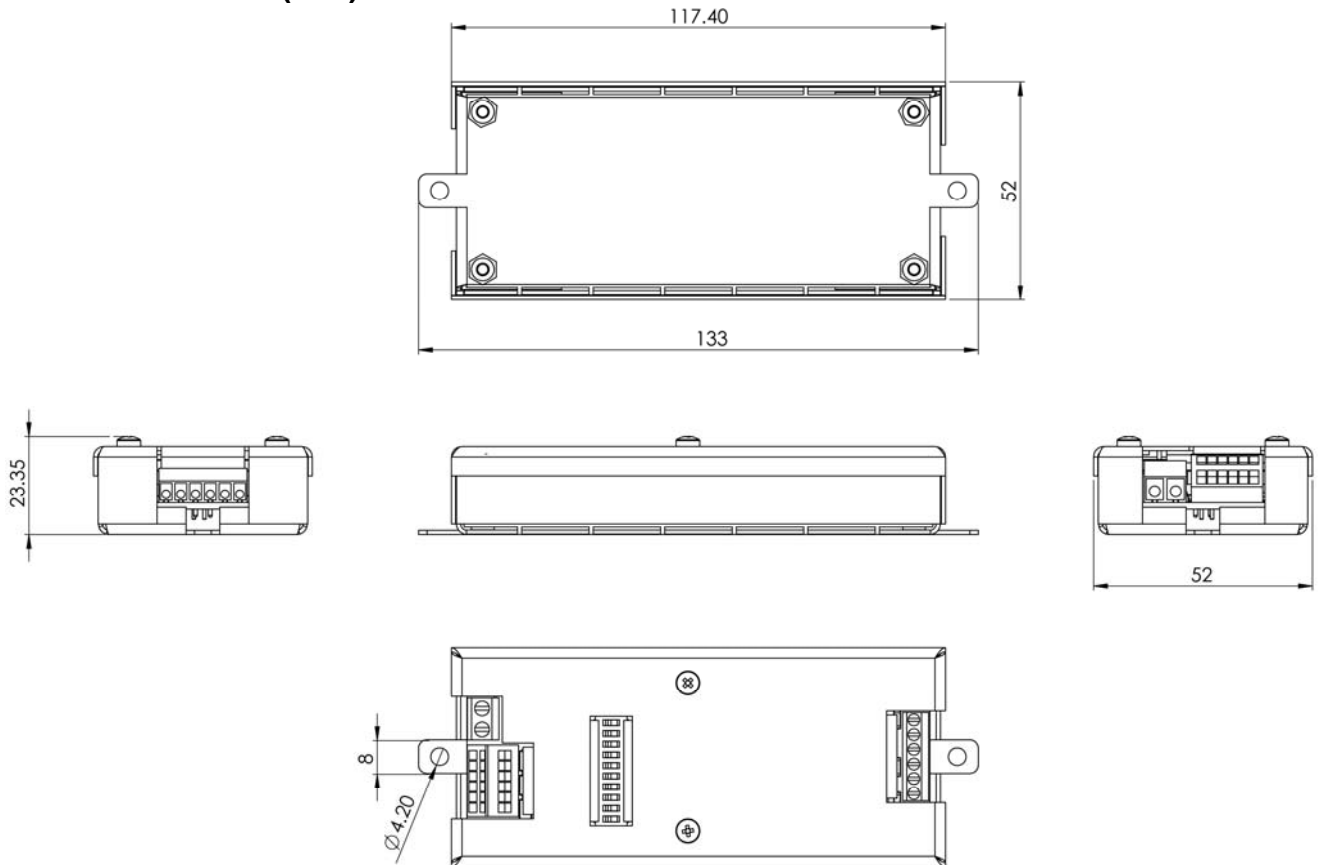


Up to 14 LEDs in series per channel!

PCB Dimensions (mm) :



Case Dimensions (mm) :



Notice:

The information herein is subject to change without notice.

LED Team does not authorize its products for use as critical components in life-support systems where a malfunction or failure may reasonably be expected to result in significant injury to the user. The inclusion of LED Team products in life-support systems implies that the manufacturer assumes all risk of such use and in doing so indemnifies LED Team against all charges.