

FEATURES:

- 950 MHz ~ 2150 MHz;
- 0.2 dB Insertion Loss;
- 6.0 Amp DC Current;
- 200 Watts CW RF Power;
- 50 Volt DC Rating;
- RoHS Compliant.

APPLICATIONS:

- Cellular;
- GPS;
- PCS, 3G.



LBST09502150A, 950 MHz ~ 2150 MHz WIDE BAND 6.0 AMP BIAS-T

ELECTRICAL SPECIFICATIONS @ 21 °C

Symbol	Parameters/Conditions	Unit	Min	Typical	Max
f	Passband	MHz	950		2150
IL	Insertion Loss: DC to 10MHz, Ports: 'DC' to 'DC+RF'	dB		0.1	0.3
VSWR	Return VSWR: DC to 10MHz, Ports: 'DC' to 'DC+RF'	Ratio			1.5:1
IL	Insertion Loss: 950 - 2150MHz, Ports: 'RF+DC' to 'RF'	dB		0.1	0.3
VSWR	Return VSWR: 950 - 2150MHz, Ports: 'RF+DC' to 'RF'	Ratio		1.22:1	1.5:1
I _{dc}	DC Current Handling	A			6.0
V _{dc}	DC Voltage Handling	V			50
P _o	RF CW Power Handling	W			200
S ₁₂	Reverse Isolation: 950 - 2150MHz, Ports: 'RF+DC' to 'DC', 'RF' to 'DC'	dB	40		
Z ₀	Impedance	Ohm		50	

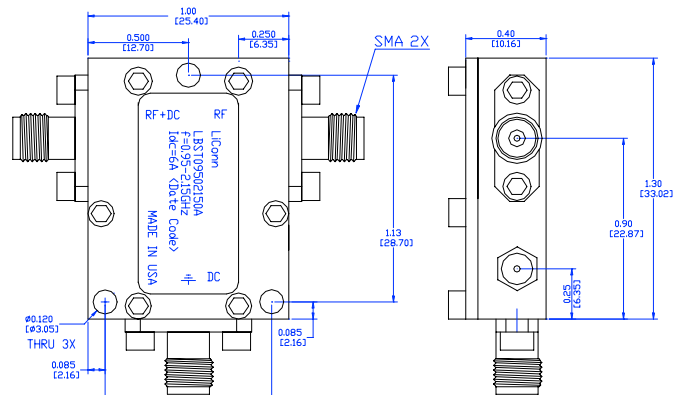
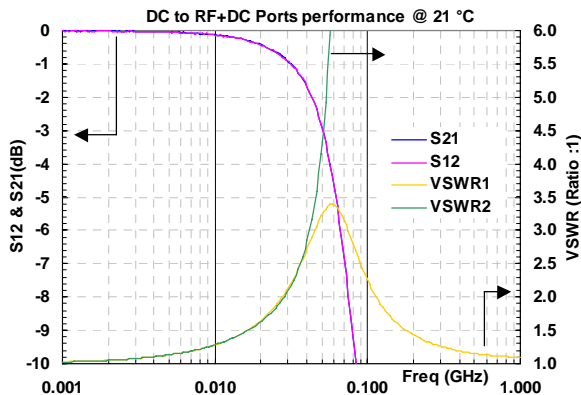
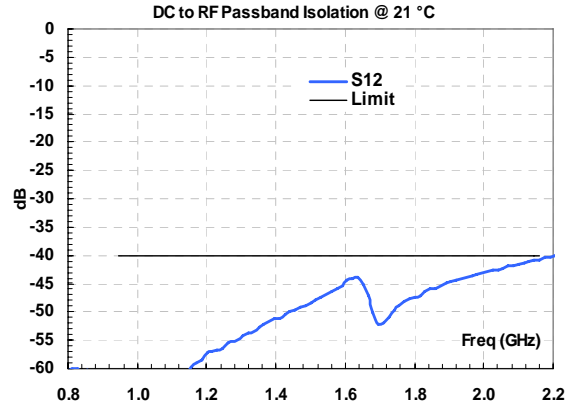
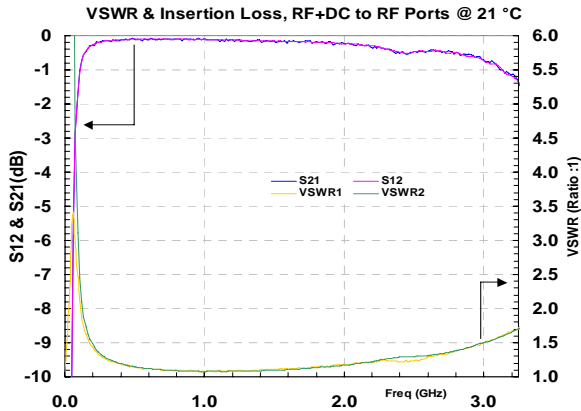
ABSOLUTE MAXIMUM RATINGS¹

Parameters/Conditions	Unit	Maximum
Channel Temperature	°C	+150
CW RF Power	W	200
DC Supply Voltage	V	50
DC Current	A	6.0
Operating Temperature	°C	-40 ~ +85
Storage Temperature	°C	-65 ~ +125

[1] Operation beyond these limits may cause permanent damage.

Heat Sink Required For CW High Power Application!

ELECTRICAL PERFORMANCE/MECHANICAL OUTLINE



Unit: INCH Base Material: Aluminium Alloy 6061
 [mm] Finish: RoHS Compliant Conductive Plating
 Tolerance: X.XXX ±0.005"
 X.XX ±0.01"

ORDERING INFORMATION: LBST09502150A

Tel: 1-651-482-1848
 Fax: 1-651-482-1573

Rev 2.2

© Copyright 2014 LiConn, Inc.
 Specifications and information are subject to change without notice.

sales@liconn.com
<http://www.liconn.com>