

FEATURES:

- 1 MHz ~ 150 MHz;
- 17.0 dB Gain;
- 3.0dB Noise Figure;
- 30.0 dBm P_{1dB};
- 45.0 dBm IP₃;
- RoHS Compliant.

APPLICATIONS:

- SW;
- FM;
- VHF.



LPA00010150A, 1 MHz ~ 150 MHz WIDE BAND POWER AMPLIFIER

ELECTRICAL SPECIFICATIONS @ 21 °C

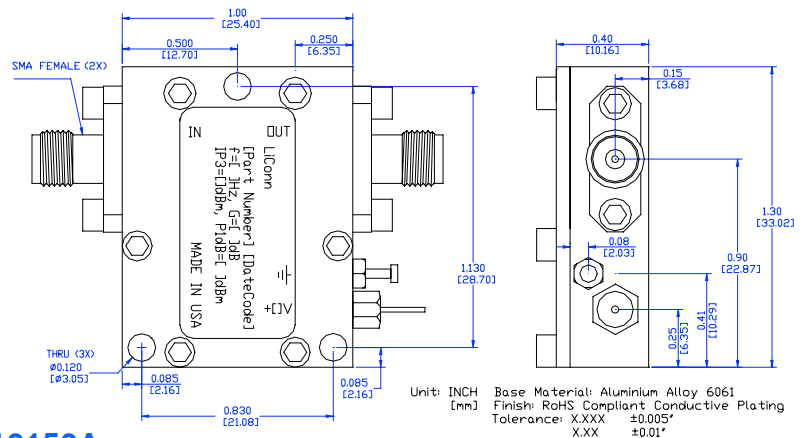
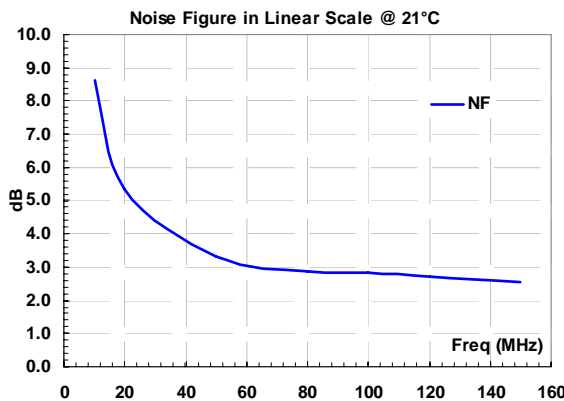
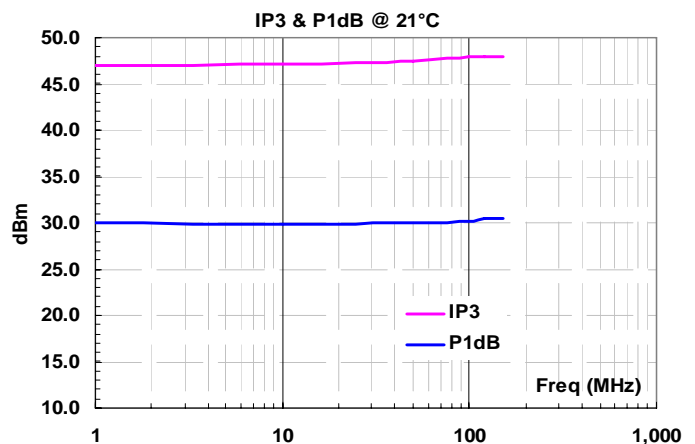
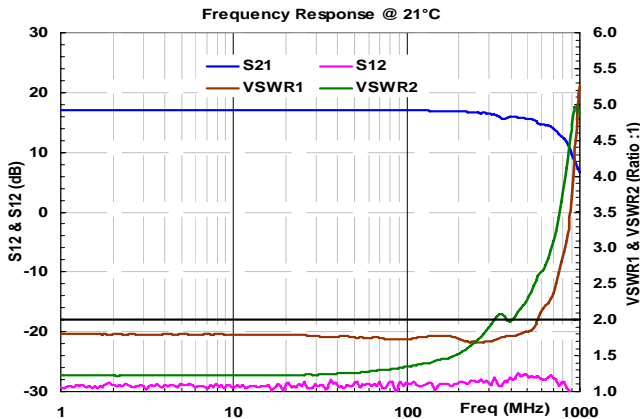
Symbol	Parameters/Conditions	Unit	Min	Typical	Max
G	Gain	dB	16	17.0	18
ΔG	Gain Flatness	dB		±0.2	
VSWR ₁	Input VSWR	Ratio			2.0:1
VSWR ₂	Output VSWR	Ratio		1.5:1	2.0:1
S ₁₂	Reverse Isolation	dB		28	
NF	Noise Figure	dB		3.0	
OIP ₃	Output 3 rd Order Intercept	dBm	43	45	
P _{1dB}	Output 1dB Gain Compression	dBm	29	30.0	
I _{dd}	Device Current (V _{dd} +12V)	mA		200	
V _{dd}	Positive Power Supply Voltage	V	+11.5	+12.0	+15.0
Z ₀	Impedance	Ohm		50	

ABSOLUTE MAXIMUM RATINGS¹

Parameters/Conditions	Unit	Maximum
Channel Temperature	°C	+150
CW RF Input Power	dBm	20
DC Supply Voltage	V	16
Drain Current	mA	250
Thermal Resistance	°C/W	32
Total Power Dissipation	W	3.0
Operating Temperature	°C	-40 ~ +85
Storage Temperature	°C	-55 ~ +125

[1] Operation beyond these limits may cause permanent damage.

ELECTRICAL PERFORMANCE/MECHANICAL OUTLINE



ORDERING INFORMATION: LPA00010150A