

# ViewConn® Plus

VC-6200-PL



1. Introducing ViewConn
2. Using ViewConn
3. Options
  1. Integrated Power Meter
  2. Pass / Fail Software
  3. Carrying Cases
  4. Accessories

# Safety



## Caution!

Fiber optic lasers use light wavelengths not visible to the human eye.

All Lightel microscopes are eye-safe video microscopes. Nevertheless, all standard safety precautions should be followed.

# Inspect at Every Step

- Manufacturing
- QC and Receiving
- System Assembly
- Installation
- System Testing
- Network Testing
- Maintenance
- Troubleshooting



# Introducing ViewConn®



ViewConn is the first, and only, hand-held, all-in-one inspection and cleaning device.

ViewConn's integrated operation allows users to quickly and easily inspect, clean and reinspect, ensuring connectors are truly clean prior to mating.

ViewConn's large 3.5" display provides clear, sharp images.

# Introducing ViewConn® Plus



## Save Time

The ViewConn Plus dual microscope design lets you easily inspect both male and female mated connector pairs without the time consuming need to change tips.

# ViewConn® Plus



# Viewing Connectors

## Turning on ViewConn

Press and briefly hold the red button on the front of ViewConn to turn on the unit. The green power light will be on whenever ViewConn is powered.

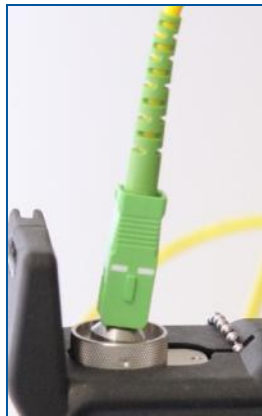
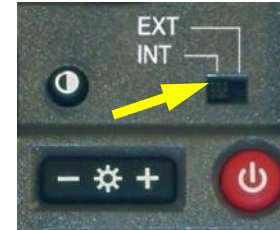
The +/- control to the left of the on/off switch will allow you to adjust the brightness of the display.



If your green power light is on, but the screen is black, briefly touch the red on/off button. The unit may have gone into the power saving, standby mode. Also check to ensure that the camera switch is set to INT.

# Inspecting Male Connectors

To inspect male connectors (patchcords and jumpers) set the camera switch, above the red on/off button to INT.



Ensure that you have the proper tip in the tip receptacle at the top of ViewConn, then place the connector into the tip.

Use the large black knob to focus the image. If you are unable to focus the image, verify that the tip is fully screwed in and the connector is properly seated in the tip.





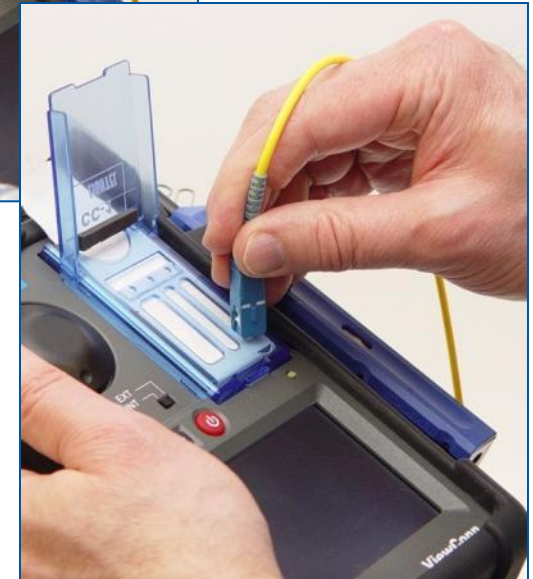
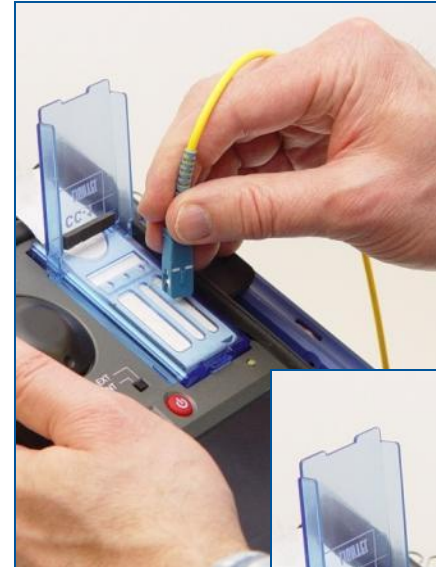
# Cleaning Male Connectors



Once you have inspected the fiber, if you need to clean it, open the cover of the CC-1 cleaning cassette, and, using moderate pressure swipe the connector ferrule from the top down on a clean section of the CC-1 cassette. Do not scrub the connector back and forth and do not reuse a section of cleaner. Reinsert the connector in the tip to verify that it is now clean.

**If clean, make sure that the mated connector is also clean, before installing or reinstalling.**

If the connector was not clean, repeat the procedure and again recheck.



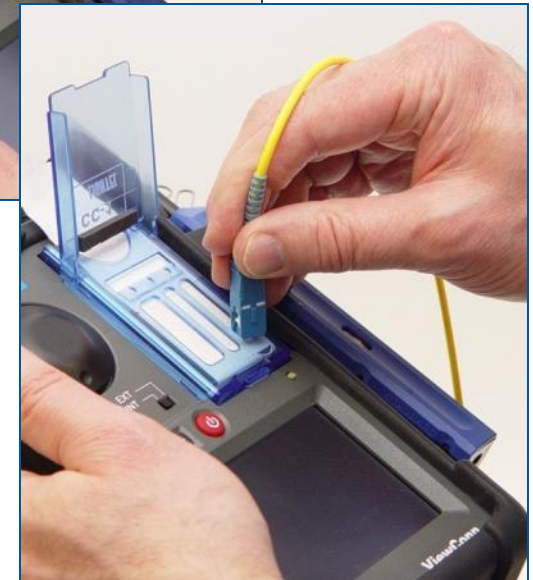
# Cleaning Male Connectors

## Wet Cleaning

If you decide you need to wet clean a connector, use a solvent dispenser like the optional Chemtronics Electro-Wash® pen dispenser to lightly wet a clean section of a CC-1 sheet. Less solvent is best.

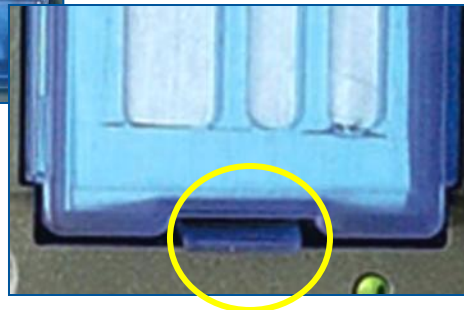
Always go from the wet portion to the clean dry portion. You always want to finish in a dry section of the sheet to be sure the solvent has been removed.

Reinspect your connector as before to verify it is clean.



# CC-1 Cleaning Cassette

When you have used all three slots on a CC-1 cleaning sheet, pull the sheet out to advance it to the next sheet. The cassette cover must be open to advance the sheet. If you wish to tear off a sheet, first close the cover. (A quick twisting motion works best to tear off the sheets.)



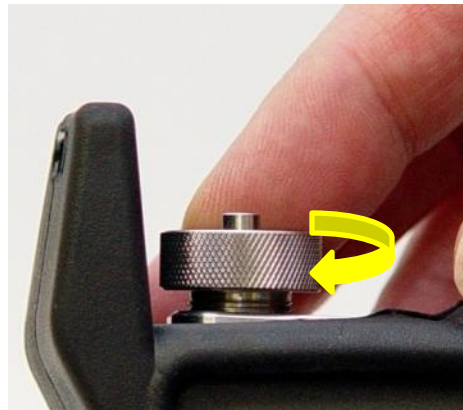
If you wish to remove the cassette, push up on the small blue plastic tab at the base of the cassette and lift the cassette out. When replacing the cassette, make sure the tab is over the edge of the cassette receptacle. This ensures that the cassette will remain in place.

# Changing ViewConn Tips

To install a VC-6200 tip align the tip key with the slot in the Tip Receptacle and seat it.



Then screw it in clockwise until tight.



To remove, simply unscrew counterclockwise and lift and lift out.

# Inspecting Male APC Connectors

APC connectors are angled and need tips designed specifically to view them. (Note the angle on the tip stem.)



A male APC connector is keyed. The key should be directly to the front of ViewConn to provide the best image. Or you can simply turn the connector until it has the best contrast.

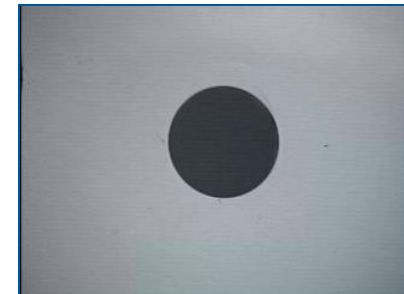


*Key*

*Alignment  
Mark*



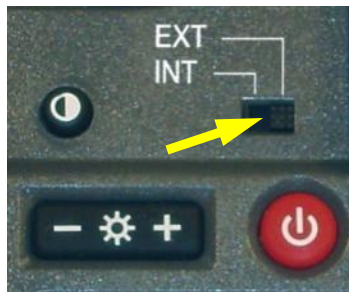
*Improperly Keyed APC Connector*



*Properly Keyed APC Connector*

# Inspecting Female Connectors

To inspect female connectors (in bulkheads and patch panels) plug the 4-pin jack on your probe into the socket on the side of ViewConn – the flat side of the jack will face the rear – and set the camera switch, above the red on/off button to EXT.



With the correct tip installed for the connector type, place the tip of the probe into the adapter and use the focus knob on the probe to focus the image. If you are unable to focus, you may not have the probe tip fully inserted. Make sure it seats fully, and refocus.

**Remember, when using the probe, focus with the probe knob.**

# Cleaning Female Connectors

After inspecting, you can use the IBC cleaner to clean in the adapter. Insert the cleaner and push until it clicks. Remove and be sure to reinspect to ensure the female connector is clean before re-mating the connectors.

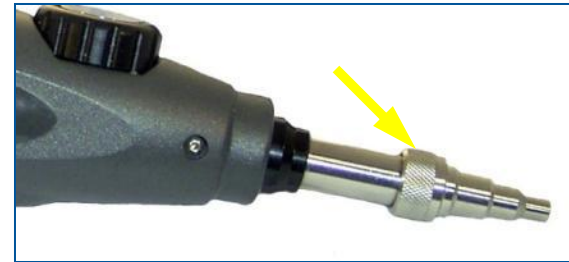


To easily attach the cleaner to ViewConn hold ViewConn in your left hand and use your thumb to pull the front flap of the accessory holder forward. Then slip the IBC cleaner into place. It will remain securely fastened until you wish to remove it.

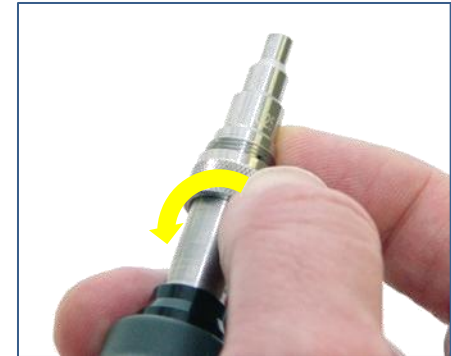


# Changing Probe Tips

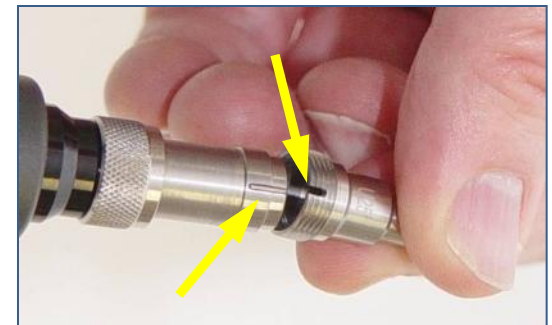
Probe tips are held in place with a lock nut.



Holding the probe, turn the lock nut counter-clockwise to loosen it fully, and then remove the tip.



All tips have a slot and fit into the key at the top of the probe. Slide the new tip in place and slip the lock nut over the tip. (You may want to use a finger to hold the tip in place until the lock nut has started threading.) Tighten the nut snugly – if the tip is loose, it may not focus properly.

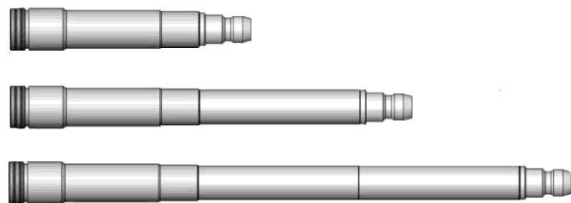
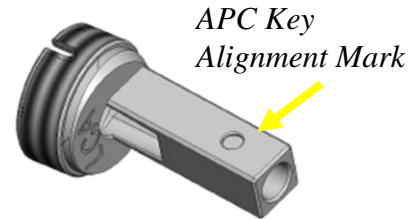




# Probe Tips

Different types of female connectors will usually require a tip designed specifically for that connector type. PC and APC versions will be different, and APC female tips will be have a mark to match the key.

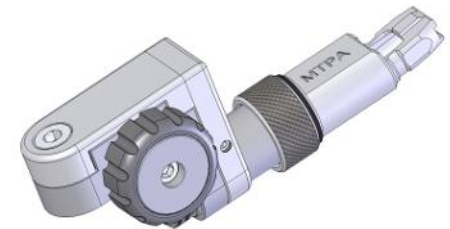
In addition to standard tips Lightel offers a wide variety of Series 2 specialty probe tips to accommodate special situations.



Extended tips



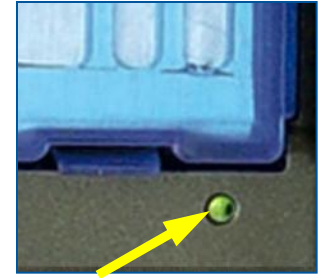
Angled tips



Ribbon fiber tips

# Powering ViewConn

ViewConn comes with a set of 4 AA low self-discharge NiMH camera grade batteries and an external battery charger. These batteries come pre-charged and may be used immediately. The green power light will slowly change to orange to alert you that the batteries are running low. When the light is red, battery power is almost gone.



Battery life should be approximately 4 hours with recharging time about 2 hours. Charging a second set of batteries while using the first can give you uninterrupted power. In an emergency, AA Alkaline batteries may be used, but they may last less than one hour and should not be left in ViewConn.

It is not necessary to remove ViewConn's ruggedized cover to install or change the batteries. Simply slide the battery cover off. Make sure you install the batteries in the proper direction and slide the battery cover back into position. When properly positioned, the cover will fit tightly.

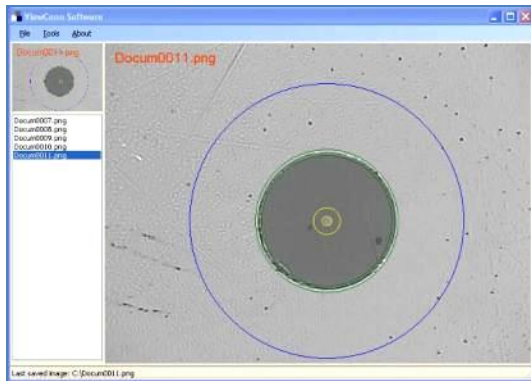


ViewConn can also be powered using the AC adapter which is included.

AC adapters and battery chargers are available with US, European, UK or Australian style plugs.

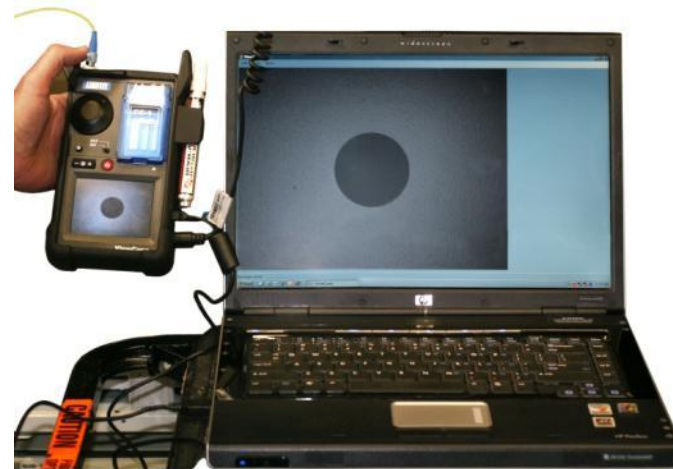
# Capturing Images

ViewConn comes with Lightel's **ConnectorView** software for viewing and capturing connector end-face images on your Windows® PC.



ConnectorView numbers each captured image individually and can be set to display the fiber cleaning zones automatically.

ViewConn is connected to your PC using a standard mini-B USB cable.



A complete software installation and user's guide can be found on the CD that comes with ViewConn.

# ViewConn Accessory Holder

The Accessory Holder will securely hold optional cleaning devices, or ...



# ViewConn Power Meter

ViewConn with  
VC6-OPM



ViewConn offers an integrated power meter option. Two versions are available for standard and higher power ranges.

The power meter plugs into ViewConn's 4-pin socket (the same one used by the probe) and is powered by ViewConn. On/Off is controlled by ViewConn's power button. The power meter can store up to 999 readings and download them through its own USB output. Universal 2.5mm and 1.25mm tips are available. These tips work with both PC and APC connectors.

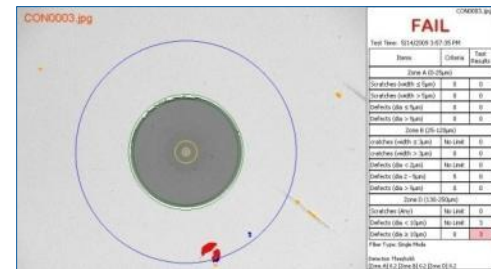
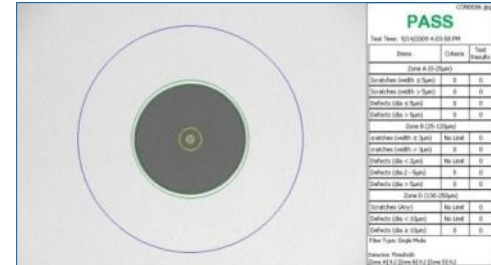
To use the power meter, attach it to ViewConn with the 4-pin jack and secure it to the ViewConn accessory holder. With ViewConn turned on, set the camera switch to EXT.

# ConnectorView Plus

Lightel's ConnectorView Plus software is our optional Pass/Fail analytical software available for ViewConn and other Lightel video microscopes.

ConnectorView Plus will automatically analyze the connector condition and provide a report. It can be used with single mode and multimode, male and female, PC and APC connectors.

Summary reports can also be generated.



Filename	Test Time	Pass/Fail	Fiber Type	Zone A				Zone B				Zone C			
				Scratches		Defects		Scratches		Defects		Scratches		Defects	
				Any	Any	Any	Any	Any	Any	Any	Any	Any	Any	Any	
				min	max	min	max	min	max	min	max	min	max	min	max
				no limit	no limit	no limit	no limit	no limit	no limit	no limit	no limit	no limit	no limit	no limit	no limit
				0	0	0	0	0	0	0	0	0	0	0	0
CON0001.jpg	4/14/2009 10:56	PASS	SM	0	0	0	0	0	0	0	0	0	0	0	0
CON0002.jpg	4/14/2009 10:57	FAIL	SM	0	0	23	5	0	0	187	1	85	0	429	63
CON0003.jpg	4/14/2009 11:00	FAIL	SM	0	0	0	0	0	0	1	1	0	0	29	3
CON0004.jpg	4/14/2009 11:02	PASS	SM	0	0	0	0	0	0	0	0	0	0	2	0
CON0005.jpg	4/14/2009 11:03	PASS	SM	0	0	0	0	0	0	0	1	0	0	0	0
CON0006.jpg	4/14/2009 11:04	FAIL	SM	0	0	0	0	0	0	28	18	0	0	145	6
CON0007.jpg	4/14/2009 11:05	PASS	SM	0	0	0	0	0	0	0	0	0	0	0	0
CON0008.jpg	4/14/2009 11:06	PASS	SM	0	0	0	0	0	0	3	0	0	0	3	0
CON0009.jpg	4/14/2009 11:07	PASS	SM	0	0	0	0	0	0	0	0	0	0	2	0
CON0010.jpg	4/14/2009 11:07	PASS	SM	0	0	0	0	0	0	2	0	0	0	2	0
CON0011.jpg	4/14/2009 11:10	PASS	SM	0	0	0	0	0	0	1	0	0	0	8	0
CON0012.jpg	4/14/2009 11:11	PASS	SM	0	0	0	0	0	0	3	3	0	0	8	0
CON0013.jpg	4/14/2009 11:20	FAIL	SM	0	0	8	0	0	0	0	2	0	0	0	0



# ViewConn Cases

Both hard and soft cases are available options for ViewConn.



# Additional Accessories



Cleaning devices



Tip boxes



Neck strap