

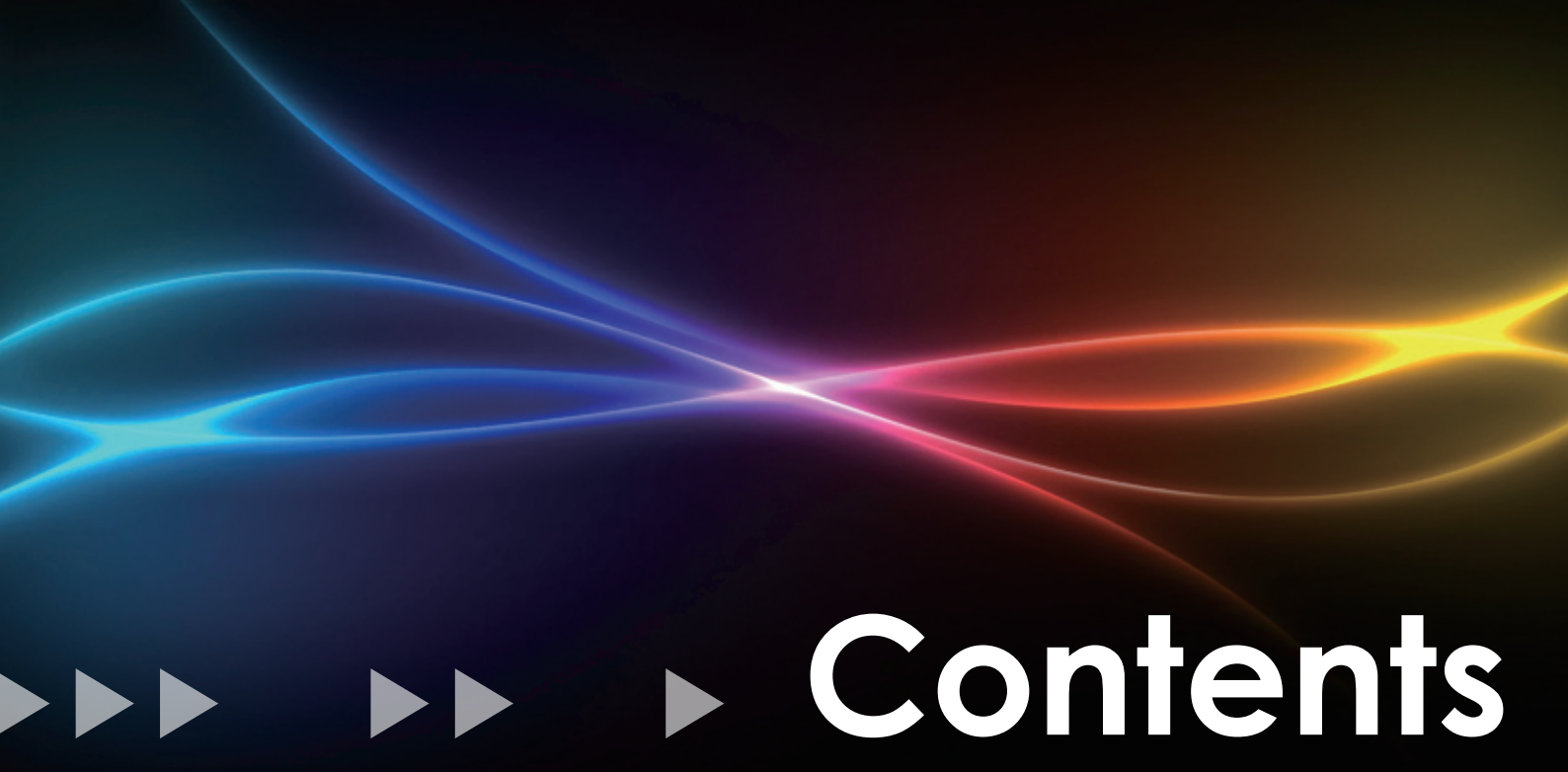
# LED LIGHTING



**LIGITEK ELECTRONICS CO., LTD.**

No.238, Bo-ai St., Shulin Dist., New Taipei City 238, Taiwan (R.O.C.)  
Tel:886-2-7703-6000(REP) Fax:886-2-7703-6286  
<http://www.ligitek.com> E-mail:ligitek@ligitek.com





# Contents

<b>2</b>	<b>LED MR16 Series</b>
<b>4</b>	<b>LED Tube Light Series</b>
<b>6</b>	<b>T-BAR Series</b>
<b>8</b>	<b>LED Downlight Series</b>
<b>11</b>	<b>LED Bulb Series</b>
<b>12</b>	<b>LED PAR30 、 PAR38 Series</b>
<b>14</b>	<b>LED Lamp Light Series</b>
<b>15</b>	<b>LED Flexible Light Series</b>
<b>16</b>	<b>LED Streetlight Series</b>
<b>18</b>	<b>LED Streetlight Module</b>
<b>19</b>	<b>Solar Streetlight Series</b>
<b>20</b>	<b>LED Cube Series</b>



# LED MR16 Series



Greener and brighter



## Electrical & Optical Spec

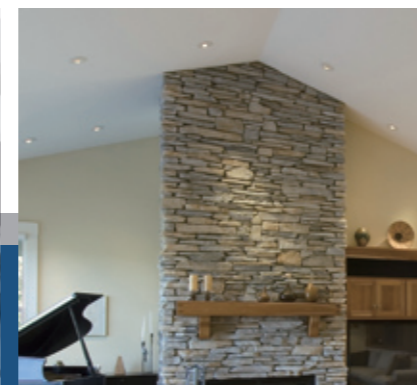
6W MR16						
Power consumption	5.2w					
Input voltage	12V(AC/DC)					
Connector	GX5.3/GU5.3					
Dimension	Φ 50xH50mm					
Operating temperature	-20~50°C					
Lifespan	>25000 hours (LED T=25°C)					
Safety mark	CE、FCC					
Viewing angle	15°	25°	40°	15°	25°	40°
CRI	70	70	70	80	80	80
LM	360lm	350lm	335lm	290lm	280lm	270lm
Color temperature	6000°K	6000°K	6000°K	3000°K	3000°K	3000°K
LUX@1M	3600lux	2700lux	1220lux	2700lux	2000lux	850lux

## Features and Benefits

- A** Ecologically friendly.
- B** Lower power consumption.
- C** No UV, IR light radiation, mercury and other harmful materials free.
- D** Long lifetime.
- E** Easy to install and maintain.
- F** No delay on start.
- G** European safety regulations certification compliance.

## Product Applications

It is widely used for Downlight, Table lamp, Landscape lighting, Store, Counter lighting, etc. for full range of all low to moderate illumination lighting needs.



4W MR16		
Power consumption	4.1w	
Input voltage	12V(DC)	
Connector	GX5.3/GU5.3	
Dimension	Φ 50xH46.6mm	
Operating temperature	-20~50°C	
Lifespan	>25000 hours (LED T=25°C)	
Viewing angle	35°	
CRI	70	80
LM	210lm	170lm
Color temperature	6000°K	3000°K
LUX@1M	950lux	750lux

Illuminate your life



# LED Tube Light Series

## Features and Benefits

- A** Energy saving than conventional fluorescent tube light.
- B** High uniformity, soft.
- C** Long lifetime > 25000 hours.
- D** No noise, No UV, No frequent flash, Quick start, suitable for the precision instruments, libraries and other quiet places.
- E** Simple installation can be connected directly to the AC 110V/220V system. Be able to directly replace the traditional fluorescent lamp to reduce costs.
- F** Transparent or no transparent plastic cover solutions + Aluminum alloy base, not easily frangible and it is safe and reliable.

## Product Applications

It is widely used in Factories, Schools, Offices, Supermarkets, Shopping malls, Hospitals, and Squares, etc.



## Electrical & Optical Spec

LED Tube T9						
Power consumption	10W	10W	10W	20W	20W	20W
Input voltage	100~240Vac@50~60Hz					
Power factor	>0.9					
Connector	G13					
Dimension	Φ 28.6xL588mm			Φ 28.6xL1198mm		
Operating temperature	-20~40°C					
Lifespan	>25000 hours					
Viewing angle	120°					
CRI	70	70	70	70	70	70
LM	700lm	625lm	550lm	1400lm	1250lm	1100lm
Color temperature	3000°K	4000°K	6000°K	3000°K	4000°K	6000°K
LUX@1M	260lux	230lux	200lux	420lux	370lux	320lux



LED Rotatable Tube T9						
Power consumption	10W	10W	10W	20W	20W	20W
Input voltage	100~240Vac@50~60Hz					
Power factor	>0.9					
Connector	G13					
Dimension	Φ 28.6xL588mm			Φ 28.6xL1198mm		
Operating temperature	-20~40°C					
Lifespan	>25000 hours					
Rotation angle	90°、60°、20°、0°、-20°、-60°、-90°					
Viewing angle	120°					
CRI	70	70	70	70	70	70
LM	700lm	625lm	550lm	1400lm	1250lm	1100lm
Color temperature	3000°K	4000°K	6000°K	3000°K	4000°K	6000°K
LUX@1M	260lux	230lux	200lux	420lux	370lux	320lux



LED Single Side Power Tube T9						
Power consumption	10W	10W	10W	20W	20W	20W
Input voltage	100~240Vac@50~60Hz					
Power factor	>0.9					
Connector	G13					
Dimension	Φ 28.6xL588mm			Φ 28.6xL1198mm		
Operating temperature	-20~40°C					
Lifespan	>25000 hours					
Viewing angle	120°					
CRI	70	70	70	70	70	70
LM	700lm	625lm	550lm	1400lm	1250lm	1100lm
Color temperature	3000°K	4000°K	6000°K	3000°K	4000°K	6000°K
LUX@1M	260lux	230lux	200lux	420lux	370lux	320lux



Note: AC power input can be unilateral and bilateral

# T-BAR Series

## Features and Benefits

- A** Ecologically friendly, lower power consumption.
- B** No UV, No IR light radiation, mercury and other harmful materials free.
- C** Long lifetime > 25000 hours.
- D** Easy to install and maintain.
- E** No flickering & FR interference.
- F** No delay on start.

## Product Applications

It is widely used for office light, hospital, library, general light, meeting room, area where using conventional T-bar.



## Electrical & Optical Spec

LED T-BAR(Energy saving mark)		
Power consumption	35W	45W
Input voltage	100~240Vac@50~60Hz	
Power factor	>0.9	
Dimension	600x600mm	
Operating temperature	-20~50°C	
Lifespan	>25000 hours (LED T=25°C)	
Safety mark	CNS、Energy Label	
Viewing angle	120°	
CRI	80	
LM	1800lm	2400lm
Color temperature	6000°K	
LUX@1M	950lux	1400lux

LED T-BAR						
Power consumption	35W		45W			
Input voltage	100~240Vac@50~60Hz					
Power factor	>0.9					
Dimension	600x600mm					
Operating temperature	-20~50°C					
Lifespan	>25000 hours (LED T=25°C)					
Safety mark	CE、FCC					
Viewing angle	120°					
CRI	70	70	70	70	70	70
LM	880lm	1100lm	1350lm	1920lm	2160lm	2400lm
Color temperature	3000°K	4000°K	6000°K	3000°K	4000°K	6000°K
LUX@1M	480lux	600lux	730lux	864lux	960lux	1100lux

# T-BAR Series



# LED Downlight Series

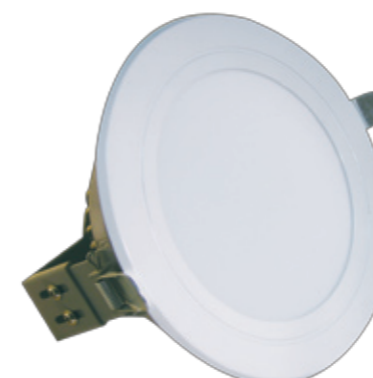
## Features and Benefits

- A** Use lifespan more than 25000 hours.
- B** Higher luminosity , wider lighting angle.
- C** Lower illumination degradation, stable performance.
- D** Proprietary design for excellent thermal management.



## Product Applications

It is widely used in the Living room, Office lighting, Restaurants, Hotels, Stores and Shop window display, Cabinet and other decorative showcase, etc.



## Electrical & Optical Spec

9W Downlight- Round		
Power consumption	9.5W	
Input voltage	100~260Vac@50~60Hz	
Power factor	>0.9	
Dimension	Φ 142xH135mm	
Operating temperature	-15°C~50°C	
Lifespan	>25000 hours	
Viewing angle	100°	
CRI	80	
LM	700lm	630lm
Color temperature	5500°K	3000°K
LUX@1M	290lux	260lux

12W Downlight- Round		
Power consumption	12.5W	
Input voltage	100~260Vac@50~60Hz	
Power factor	>0.9	
Dimension	Φ 178.5xH140mm	
Operating temperature	-15°C~50°C	
Lifespan	>25000 hours	
Viewing angle	100°	
CRI	80	
LM	950lm	850lm
Color temperature	5500°K	3000°K
LUX@1M	380lux	340lux

15W Downlight- Round		
Power consumption	15W	
Input voltage	100~260Vac@50~60Hz	
Power factor	>0.9	
Dimension	Φ 178.5xH140mm	
Operating temperature	-15°C~50°C	
Lifespan	>25000 hours	
Viewing angle	100°	
CRI	80	
LM	1100lm	1000lm
Color temperature	5500°K	3000°K
LUX@1M	560lux	500lux



# LED Downlight Series

## Electrical & Optical Spec

15W Downlight-Square		
Power consumption	15W	
Input voltage	100~260Vac@50~60Hz	
Power factor	>0.9	
Dimension	L160xW160xH140mm	
Operating temperature	-15°C~50°C	
Lifespan	>25000 hours	
Viewing angle	100°	
CRI	80	
LM	1100lm	1000lm
Color temperature	6500°K	3000°K
LUX@1M	440lux	400lux



# LED Bulb Series



## Features and Benefits

- A** Energy saving than incandescent lights.
- B** Long lifetime > 30000 hours.
- C** No flickering / No UV radiation.
- D** Ceramics design, it has the excellent heat management.

## Product Applications

It is widely used for indoor use, living room, bed room, general light, shopping mall, area where using conventional bulb.



## Electrical & Optical Spec

6W LED Bulb		
Power consumption	6w	
Input voltage	100~240Vac@50~60Hz	
Connector	E27	
Dimension	Φ 63xH110mm	
Operating temperature	-30~45°C	
Lifespan	>30000 hours	
Viewing angle	120°	
CRI	75	
LM	420lm	350lm
Color temperature	6000°K	3000°K

# LED PAR30、PAR38 Series

## Features and Benefits

- A** The shell is Aluminum design with strong heat dissipation.
- B** Long lifetime >30000 hours.
- C** Wide lighting angle, high uniformity, excellent heat management.
- D** Green illumination, Ecologically friendly, No UV radiation.
- E** High luminosity, small dimensions, directly installation available.
- F** Variable angle available.
- G** E27/ E26 screw mount cap.

## Product Applications

It is widely used in the Interior Lighting--Factories, Schools, Offices, Houses, etc.



## Electrical & Optical Spec

PAR 30				
Power consumption	9.5W			
Input voltage	100~240Vac@50~60Hz			
Connector	E27			
Dimension	Φ 97.6xH102mm	Φ 97.6xH106.3mm		
Operating temperature	-20~50°C			
Lifespan	>30000 hours			
Viewing angle	38°		120°	
CRI	65	77	65	77
LM	210lm	300lm	210lm	300lm
Color temperature	3000°K	6000°K	3000°K	6000°K
LUX@1M	860lux	1100lux	145lux	190lux

PAR 38		
Power consumption	11W	
Input voltage	100~240Vac@50~60Hz	
Connector	E27	
Dimension	Φ 118.6xH135.6mm	
Operating temperature	-20~50°C	
Lifespan	>30000 hours	
Viewing angle	120°	
CRI	65	77
LM	360lm	510lm
Color temperature	3000°K	6000°K
LUX@1M	200lux	260lux



Illuminate your life



# LED Lamp Light Series



## Features and Benefits

- A** High luminosity , wide view angle, soft and high uniformity.
- B** Exquisite appearance, with stable performance. Low optical degradation.
- C** 256 gray scales , fulfill the washing wall effect with control system.
- D** Energy conservation and environmental protection, No UV radiation.
- E** Use waterproof docking cable, signal lines, easy installation, convenient, sealed performance is better.
- F** Long lifetime > 30000 hours.

## Product Applications

It is widely used for architectural lighting, Parks, Theatres, and Pavement lighting, Stairs lighting, Concealment type lighting, Emergency exits lighting, Ambry, Exhibition hall, and display cabinets lighting, etc.



## Electrical & Optical Spec

LED Lamp light		
Power consumption	5.5W	11W
Dimension	L300xW29.05xH10.45mm	L600xW29.05xH10.45mm
Input voltage	24V(DC)	
Operating temperature	-30~70°C	
Lifespan	>30000 hours	
Viewing angle	120°	
LED color	Blue.Green.White .Warm White.	

# LED Flexible Light Series

## Features and Benefits

- A** Superior mechanical function of flexible PCB makes LED strips flexible, and fixed on ragged surface, wide ranges of applications.
- B** Choose efficient, low-energy LED chips and circuit connection method to be able to effectively outspread lamp with controllable length, create a colorful strip world.
- C** Energy conservation and environmental protection, No UV.
- D** Long lifetime > 30000 hours.

## Product Applications

It is widely used in Three-dimensional luminous words, Signs, Logos, Advertisements, Shopping windows, Automobile tail lighting, decoration lighting, Special clothes lighting, Handicrafts decoration lighting, Mobile phone backlighting, and Signal inductions lighting, etc.

## Electrical & Optical Spec

3528 LED Flexible light	
Power consumption(1M)	4.8W
Input voltage	12V(DC)
Dimension	L1000xW8xH5mm
Operating temperature	-30~70°C
IP	IP65、IP67
Lifespan	>30000 hours
Viewing angle	120°
Color	Blue. Green. Red. White. Warm White

5050 LED Flexible light	
Power consumption(1M)	7.2W
Input voltage	12V(DC)
Dimension	L1000xW10xH5mm
Operating temperature	-30~70°C
IP	IP65、IP67
Lifespan	>30000 hours
Viewing angle	120°
Color	Blue. Green. Red. White. Warm White. RGB





# LED Streetlight Series



## Features and Benefits

- A** Split type for power and head of street light, easy to maintain.
- B** Natural convection design.
- C** Single chip design with high illumination performance.
- D** Optimized heat fins with special nanometer ingredient for outer covering.
- E** Second Optics performance design meets the road safety standard.
- F** CNS 14676-5、CNS 14676-5、CNS9118、CNS14335、IEC60598-2-3、CNS15233 standard compliance.

## Product Applications

It is used for Gardens, Parks, Community, Scenic areas, Suburbs and Roads lighting.

150W LED Streetlight		
Power consumption	150W	
Input voltage	100~240Vac@50~60Hz	
Power factor	>0.9	
Dimension	L700xW129xH254mm	
Operating temperature	-30~50°C	
Lifespan	>50000 hours	
IP	IP65	
CRI	75	
LM	12000lm	13800lm
Color temperature	3000°K	6000°K
LUX@8M	44lux	55lux



## Electrical & Optical Spec

48W LED Streetlight		
Power consumption	48W	
Input voltage	100~240Vac@50~60Hz	
Power factor	>0.9	
Dimension	L416xW129xH254mm	
Operating temperature	-30~50°C	
Lifespan	>50000 hours	
IP	IP65	
CRI	75	
LM	3800lm	4400lm
Color temperature	3000°K	6000°K
LUX@6M	15lux	18lux

96W LED Streetlight		
Power consumption	96W	
Input voltage	100~240Vac@50~60Hz	
Power factor	>0.9	
Dimension	L613xW129xH254mm	
Operating temperature	-30~50°C	
Lifespan	>50000 hours	
IP	IP65	
CRI	75	
LM	7700lm	8800lm
Color temperature	3000°K	6000°K
LUX@8M	11lux	14lux

120W LED Streetlight		
Power consumption	120W	
Input voltage	100~240Vac@50~60Hz	
Power factor	>0.9	
Dimension	L700xW129xH254mm	
Operating temperature	-30~50°C	
Lifespan	>50000 hours	
IP	IP65	
CRI	75	
LM	9600lm	11000lm
Color temperature	3000°K	6000°K
LUX@8M	12lux	16lux



# LED Streetlight Module

## Features and Benefits

- A** Energy conservation and environmental protection.
- B** Long lifetime.
- C** Split type for power and head of street light, easy to maintain.
- D** Natural convection design.
- E** Single chip design with high illumination performance.
- F** IP65.
- G** Optimized heat fins with special nanometer ingredient for outer covering.
- H** Variable second Optics performance design meets customers' inquiry.

## Product Applications

It is widely used in Streetlight, Spotlight, Tunnel lights, Security lights, Stadium Lights, and Parking Light, etc.



## Electrical & Optical Spec

150W LED Streetlight Module		
Power consumption	150W	
Input voltage	100~240Vac@50~60Hz	
Power factor	>0.9	
Dimension	L553xW538xH85mm	
Operating temperature	-30~50°C	
Lifespan	>50000 hours	
IP	IP65	
CRI	75	
LM	12000lm	13800lm
Color temperature	3000°K	6000°K
LUX@8M	16lux	20lux
LUX@10M	12lux	15lux
LUX@12M	8lux	10lux

200W LED Streetlight Module		
Power consumption	200W	
Input voltage	100~240Vac@50~60Hz	
Power factor	>0.9	
Dimension	L665xW538xH85mm	
Operating temperature	-30~50°C	
Lifespan	>50000 hours	
IP	IP65	
CRI	75	
LM	16100lm	18400lm
Color temperature	3000°K	6000°K
LUX@8M	20lux	26lux
LUX@10M	14lux	18lux
LUX@12M	11lux	14lux

250W LED Streetlight Module		
Power consumption	250W	
Input voltage	100~240Vac@50~60Hz	
Power factor	>0.9	
Dimension	L770xW538xH85mm	
Operating temperature	-30~50°C	
Lifespan	>50000 hours	
IP	IP65	
CRI	70	
LM	20100lm	23000lm
Color temperature	3000°K	6000°K
LUX@8M	26lux	33lux
LUX@10M	18lux	23lux
LUX@12M	14lux	18lux

# Solar Streetlight Series

## Features and Benefits

- A** Ecologically friendly.
- B** Lower power consumption.
- C** No UV, mercury and other harmful materials free.
- D** Long lifetime.
- E** Easy to maintain.
- F** No delay on start.
- G** No danger of frangibility.
- H** IP65.

## Product Applications

It is widely used in Gardens, Parks, Community, Landscape areas, and Suburbs ,etc.



## Electrical & Optical Spec

Solar Streetlight		
Power consumption	24W	
Solar Power consumption	130W	
Battery capacity	200Ah	
Input voltage	12V(DC)	
Dimension	L416xW129xH254mm	
Operating temperature	-30~50°C	
Lifespan	>50000 hours	
IP	IP65	
CRI	75	
LM	1900lm	2200lm
Color temperature	3000°K	6000°K
LUX@6M	6lux	8lux
Capable lighting hours	Capable lighting hours (full load) condition 8 days 10 hours	

Solar Streetlight		
Power consumption	36W	
Solar Power consumption	130W	
Battery capacity	200Ah	
Input voltage	12V(DC)	
Dimension	L416xW129xH254mm	
Operating temperature	-30~50°C	
Lifespan	>50000 hours	
IP	IP65	
CRI	75	
LM	2800lm	3300lm
Color temperature	3000°K	6000°K
LUX@6M	8lux	10lux
Capable lighting hours	Capable lighting hours (full load) condition 5 days 10 hours	



# LED Cube Series

## Features and Benefits

- A Excellent visibility.
- B Long lifetime.
- C Low power consumption.
- D Excellent and flexible design, low maintenance.
- E Easy installation, stable quality.
- F IP67 Waterproof.

## Product Applications

It is widely used in Stations, and MRT.

## Electrical & Optical Spec

LED Cube	
Power consumption	4.2W
Input voltage	15V(DC)
Dimension	L290xW90xH34mm
Operating temperature	-20~80°C
Lifespan	>30000 hours
LED color	Red. Yellow. Blue. Green. White .Warm White

