

Test Report

Report No. ECL01H067806001

Page 1 of 7

Applicant LITE-ON MICROELECTRONICS (WUXI) CO., LTD.
LITE-ON SEMICONDUCTOR CORP.

Address LAND LOT J7、J8WEPZ, NEW DISTRICT, WUXI CITY, JIANGSU, CHINA
9F,NO.233-2 PAO-CHIAO ROAD, HSIN-TIEN DISTRICT, NEW TAIPEI CITY 23145,
TAIWAN, R.O.C

The following sample(s) and sample information was/were submitted and identified by/on the behalf of the client

No.	Sample Name	The sample description
1	GPP BRIDGE: LEAD FREE PLATING	MIXED ALL PARTS OF BODY
2		SILVER COLORED METAL PIN
3		BLACK PLASTIC BODY WITHOUT SOLDER WAFER&DIE

Part No. GBJ PACKAGE FAMILY (GBJXXX,GBJXXXL,GBJXXXX ETC)
GBU PACKAGE FAMILY (GBUXXX, GBUXXXX, ETC)
GBL PACKAGE FAMILY (GBLXXX, GBLXXXL, GBLXXXM ETC)
KBP PACKAGE FAMILY (KBPXXG, KBPXXXG, KBPXXXGL, ETC)
KBJ PACKAGE FAMILY (KBJXXXG, KBJXXXL, KBJXXXXG ETC)
DF PACKAGE FAMILY (DFXXS, DFXXSH, DFXXXXS,
DFXXM, DFXXMH, DFXXXXM ETC) HDDF PACKAGE FAMILY
(RHXX, HDXX ETC)

Sample Received Date Jan. 4, 2016

Testing Period Jan. 4, 2016 to Jan. 8, 2016

Test Requested As specified by client, to test Lead (Pb), Cadmium (Cd), Mercury (Hg), Hexavalent Chromium(Cr(VI)), Polybrominated Biphenyl(PBBs), Polybrominated Diphenyl Ethers(PBDEs), Hexabromocyclododecane (HBCDD), Phthalates in the submitted sample(s).

Test Method Please refer to the following page(s).

Test Result(s) Please refer to the following page(s).



Tested by Ada

Approved by Hongwei

Su Hongwei

Senior Laboratory Manager
Centre Testing International Pinbiao(Shanghai) Co., Ltd.

Reviewed by Hu Hongwei

Date Jan.8,2016

No. R153068590

No.1996,Xinjinjiao Road, Pudong New District,Shanghai,China

Test Report

Report No. ECL01H067806001

Page 2 of 7

Test Method

Tested Item(s)	Test Method	Measured Equipment(s)
Lead (Pb)	IEC 62321-5:2013 Ed.1.0	ICP-OES
Cadmium (Cd)	IEC 62321-5:2013 Ed.1.0	ICP-OES
Mercury (Hg)	IEC 62321-4:2013 Ed.1.0	ICP-OES
Hexavalent Chromium (Cr(VI))	IEC 62321:2008 Ed.1 Annex B	UV-Vis
	IEC 62321:2008 Ed.1 Annex C	
Polybrominated Biphenyls (PBBs)	IEC 62321:2008 Ed.1 Annex A	GC-MS
Polybrominated Diphenyl Ethers (PBDEs)	IEC 62321:2008 Ed.1 Annex A	GC-MS
Phthalates	Refer to EN 14372:2004(E)	GC-MS
Hexabromocyclododecane (HBCDD)	Refer to US EPA 3550C:2007 & US EPA 8270D:2007	GC-MS

Test Report

Report No. ECL01H067806001

Page 3 of 7

Test Result(s)

Tested Item(s)	Result(Unit: mg/kg)			MDL
	1	2	3	
Lead (Pb)	13465	22	8	2 mg/kg
Cadmium (Cd)	N.D.	N.D.	—	2 mg/kg
Mercury (Hg)	N.D.	N.D.	—	2 mg/kg
Hexavalent Chromium (Cr(VI))	N.D.	—	—	2 mg/kg
	—	Negative	—	/
Polybrominated Biphenyls(PBBs)				
Monobromobiphenyl	N.D.	—	—	5 mg/kg
Dibromobiphenyl	N.D.	—	—	5 mg/kg
Tribromobiphenyl	N.D.	—	—	5 mg/kg
Tetrabromobiphenyl	N.D.	—	—	5 mg/kg
Pentabromobiphenyl	N.D.	—	—	5 mg/kg
Hexabromobiphenyl	N.D.	—	—	5 mg/kg
Heptabromobiphenyl	N.D.	—	—	5 mg/kg
Octabromobiphenyl	N.D.	—	—	5 mg/kg
Nonabromobiphenyl	N.D.	—	—	5 mg/kg
Decabromobiphenyl	N.D.	—	—	5 mg/kg
Polybrominated Diphenyl Ethers(PBDEs)				
Monobromodiphenyl ether	N.D.	—	—	5 mg/kg
Dibromodiphenyl ether	N.D.	—	—	5 mg/kg
Tribromodiphenyl ether	N.D.	—	—	5 mg/kg
Tetrabromodiphenyl ether	N.D.	—	—	5 mg/kg
Pentabromodiphenyl ether	N.D.	—	—	5 mg/kg
Hexabromodiphenyl ether	N.D.	—	—	5 mg/kg
Heptabromodiphenyl ether	N.D.	—	—	5 mg/kg
Octabromodiphenyl ether	N.D.	—	—	5 mg/kg
Nonabromodiphenyl ether	N.D.	—	—	5 mg/kg
Decabromodiphenyl ether	N.D.	—	—	5 mg/kg
Summary Table				
Tested Item(s)	Result(Unit: mg/kg)			MDL
	1			
Hexabromocyclododecane (HBCDD)	N.D.			5 mg/kg

Test Report

Report No. ECL01H067806001

Page 4 of 7

Tested Item(s)	Result(Unit: mg/kg)	MDL
	1	
Phthalates		
Diisobutyl phthalate (DIBP) CAS#:84-69-5	N.D.	50mg/kg
Dibutyl phthalate (DBP) CAS #:84-74-2	N.D.	50mg/kg
Benzylbutyl phthalate (BBP) CAS #:85-68-7	N.D.	50mg/kg
Bis(2-ethyl(hexyl)) phthalate (DEHP) CAS #:117-81-7	N.D.	50mg/kg
Di-n-octyl phthalate (DNOP) CAS#:117-84-0	N.D.	50mg/kg
Diisononyl phthalate (DINP) CAS#:28553-12-0,68515-48-0	N.D.	50mg/kg
Diisodecyl phthalate (DIDP) CAS#:26761-40-0,68515-49-1	N.D.	50mg/kg
Di-n-hexyl phthalate (DNHP) CAS#:84-75-3	N.D.	50mg/kg

Tested Sample/Part Description

1. Black body (Tested as a whole)
2. Silvery metal pin
3. Black body (Tested as a whole)

Test Report

Report No. ECL01H067806001

Page 5 of 7

Remark: The sample had been dissolved totally tested for Lead, Cadmium, Mercury.

The sample(s) was tested as a whole, because it's impossible to disassemble or separate it by current equipment and technology. The result(s) shown on this report may be different from the content of any homogeneous material.

-MDL= Method Detection Limit

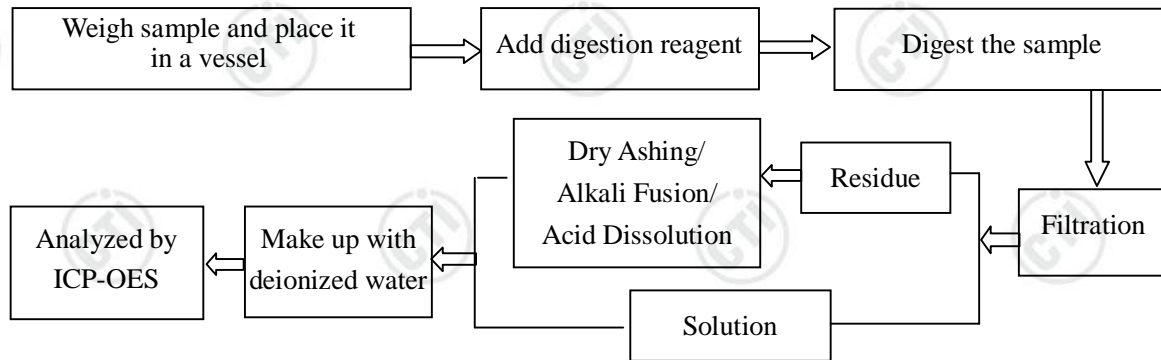
-N.D. = Not Detected (<MDL)

-mg/kg = ppm = parts per million

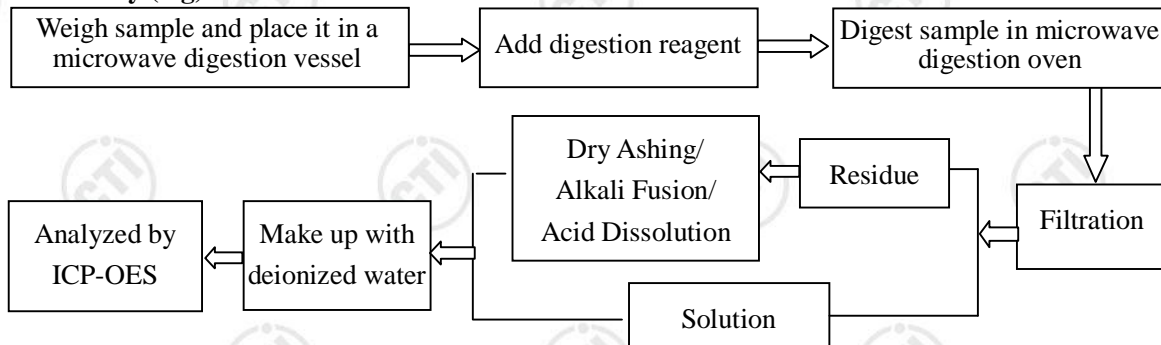
-Negative = Absence of Cr(VI), the detected Cr(VI) concentration in the boiling water extraction solution is less than 0.02 mg/kg with 50cm² sample surface area used.

Test Process

1. Lead(Pb), Cadmium(Cd)

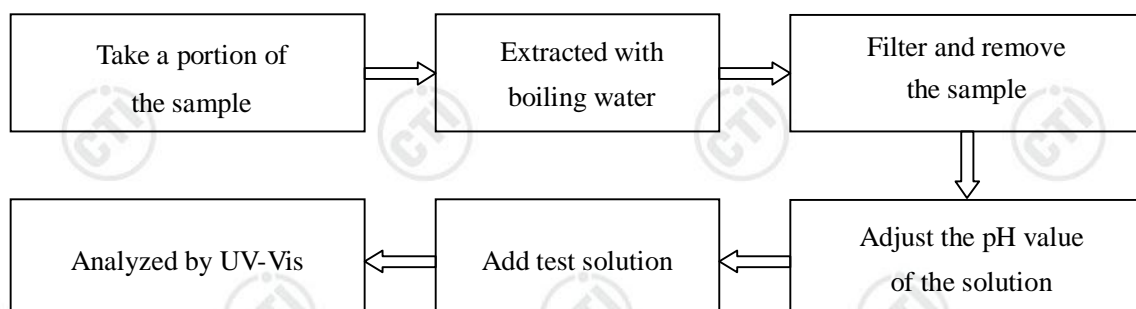


2. Mercury (Hg)



3. Hexavalent Chromium (Cr(VI))

(1) IEC 62321:2008 Ed.1 Annex B

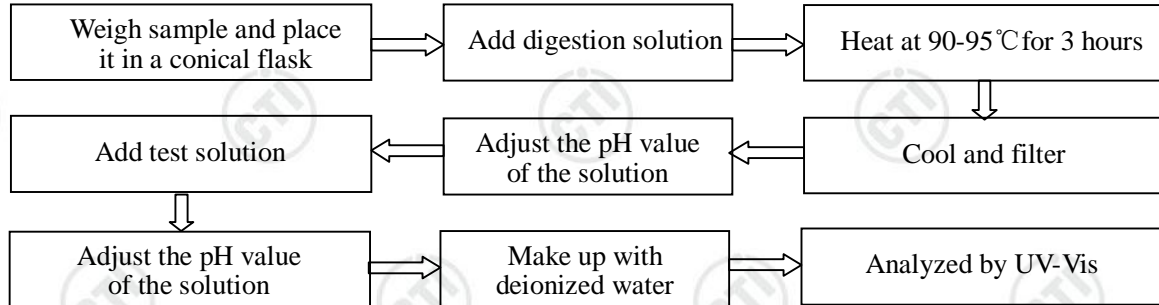


Test Report

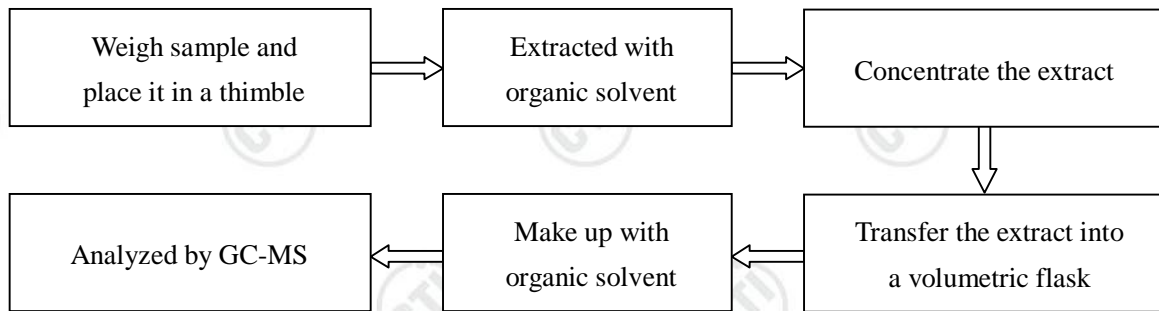
Report No. ECL01H067806001

Page 6 of 7

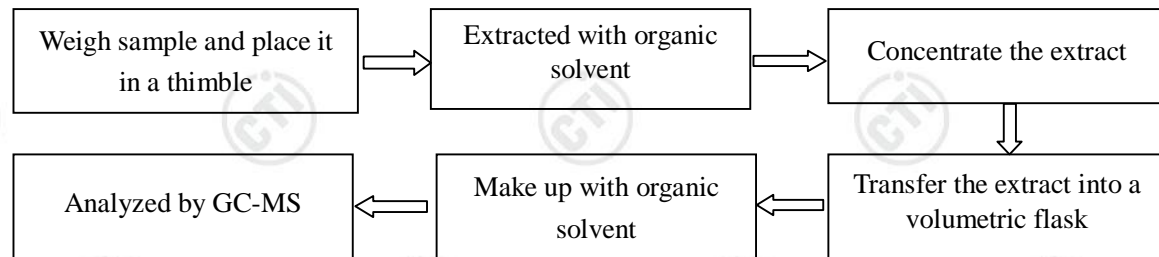
(2)IEC 62321:2008 Ed.1 Annex C



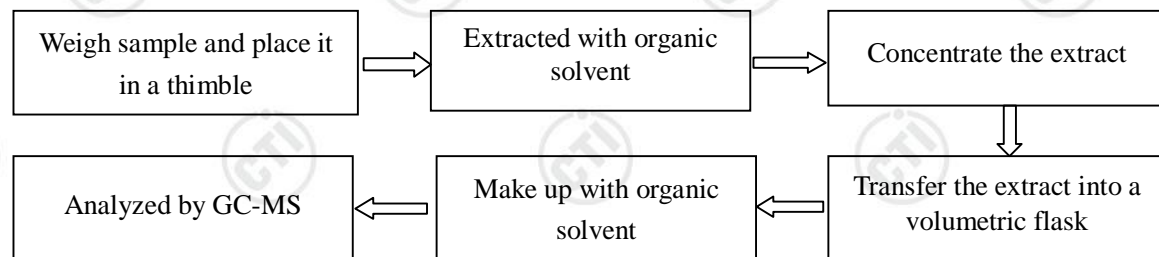
4. Polybrominated Biphenyls(PBBs), Polybrominated Diphenyl Ethers(PBDEs)



5. Phthalates



6. Hexabromocyclododecane (HBCDD)

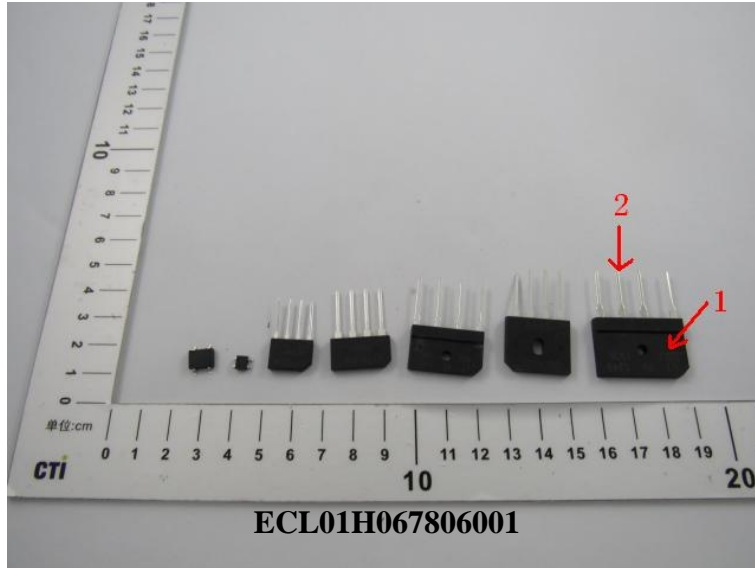


Test Report

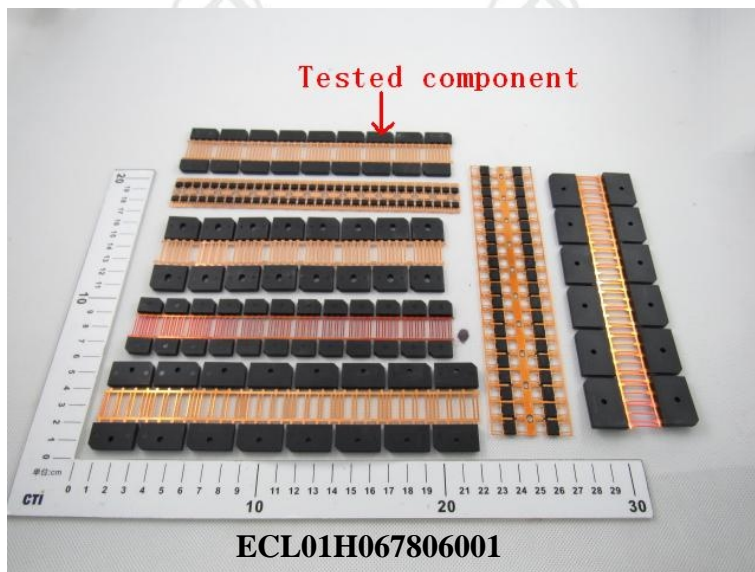
Report No. ECL01H067806001

Page 7 of 7

Photo(s) of the sample(s)



1,2



3

*** End of Report ***

The test report is effective only with both signature and specialized stamp. The result(s) shown in this report refer only to the sample(s) tested. Without written approval of CTI, this report can't be reproduced except in full.