

CASE STUDY

Back to simplicity for Ellevio

Ellevio (former Fortum) wanted a simplified, standardisable, easy to install and maintain substation platform with flexible functionality. Supported by local partner 'Protrol' the SASensor Open Platform solution was installed on the primary substation Kyrkviken.



Substation Kyrkviken

Challenge

- Standardise substation system to accommodate different stakeholders.
- Provide Ellevio with a flexible, futureproof solution for substation automation.
- Create upgradable system which can be used for standardising all substation protection, control and automation systems.

Solution

- Use the SASensor Open platform to create a future-proof base.
- Use the Graphical Programming Interface to create interlocks, logic and new functionality and provide real-time graphical insight in system and component status.
- Add 3rd party functionality to meet required specifications.

Benefits

- Reduce effort in training and knowledge management.
- Simplify maintenance and spare part management due to limited number of device types.
- System is easy to operate, install and maintain.

“ This is really smart grid in practice. The open platform enables a flexibility that we have been striving for. I believe that this will be the start of a technology shift in the control equipment area. ”

Bengt Almgren, Head of Regional Networks, Ellevio

ELLEVIO

“ We are delighted that we now can offer Locamation's fully integrated substation automation system together with our already established engineering services to be able to offer competitive solutions for new and existing distribution substations in the Nordic countries. ”

Torbjörn Karlsson, CEO, Protrol

Protrol

“ We are delighted to cooperate with Ellevio and jointly demonstrate a new model for substation intelligence. We help Ellevio developing and improving reliable, affordable and sustainable energy supplies that can easily adapt to future changes thanks to flexible functionality. ”

Pascal Bleeker, COO, Locamation

Locamation
smart smart grid solutions

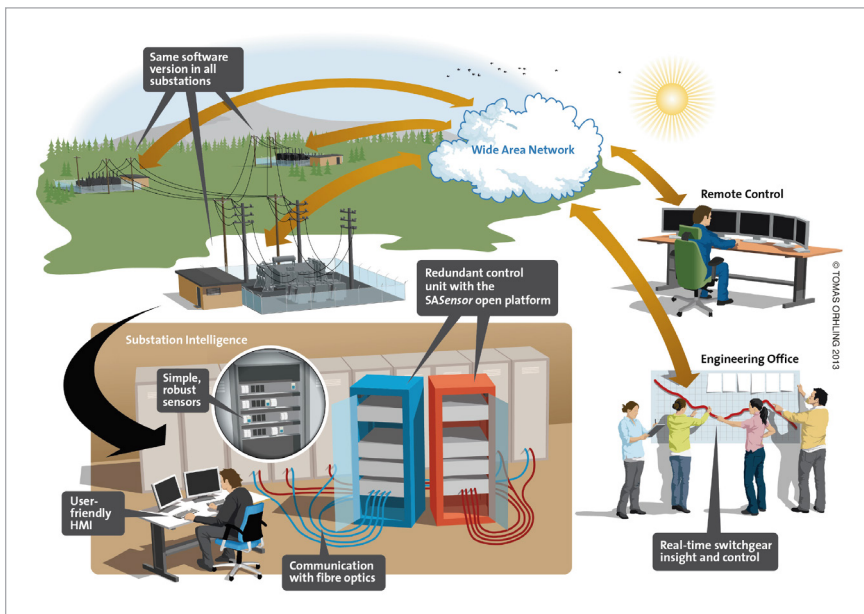
Details

Ellevio executed the project with Locamation as a complete future proof substation automation solution, working

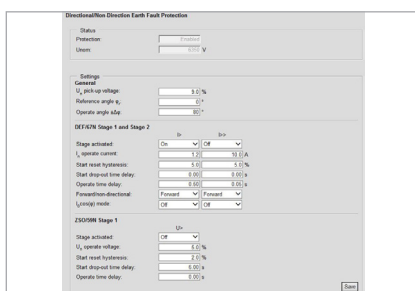
with best in class suppliers to enable specialised third party functions such as Protrol's Arcing Earth Fault function.



Five device types



Overview of the substation solution



Directional earth-fault Setting screen



Locamation B.V.
Colosseum 11
7521 PV Enschede
The Netherlands

T: +31(0)88 1660100
E: info@locamation.com
I: www.locamation.com

About Ellevio

Ellevio is an electricity distribution utility serving the capital area of Stockholm, central Sweden, and the Swedish west coast with a 17% market share. Ellevio transports electricity to over 900,000 customers in Sweden. The company operates approximately 71,000 km of cable network distributing 40.6TWh of electricity annually.

About Protrol

Protrol is a development and consulting company in power and automation technologies like monitoring and fault detection. Protrol's solutions for fault detection have resulted in increased availability and performance of the power network. The head quarter is situated in Gothenburg. The clients of Protrol are power and energy companies, public administration and the process industry.

About Locamation

Locamation is a developer of innovative hardware and software technology for smart grids. Locamation's main customers are operators of Electrical Distribution and Transportation networks. Locamation is located in Enschede (NL) and is owned by Alliander, Wadinko and Yellow&Blue.

Sales Support

E: sales@locamation.com

For the latest product information visit:
www.locamation.com