

Standard Accessories

LEAPER-3C Flash Writer main unit x1, USB cable x1, DC 12V/500mA adaptor x1, PC Software, drivers and manuals on CD-ROM x1



Main unit

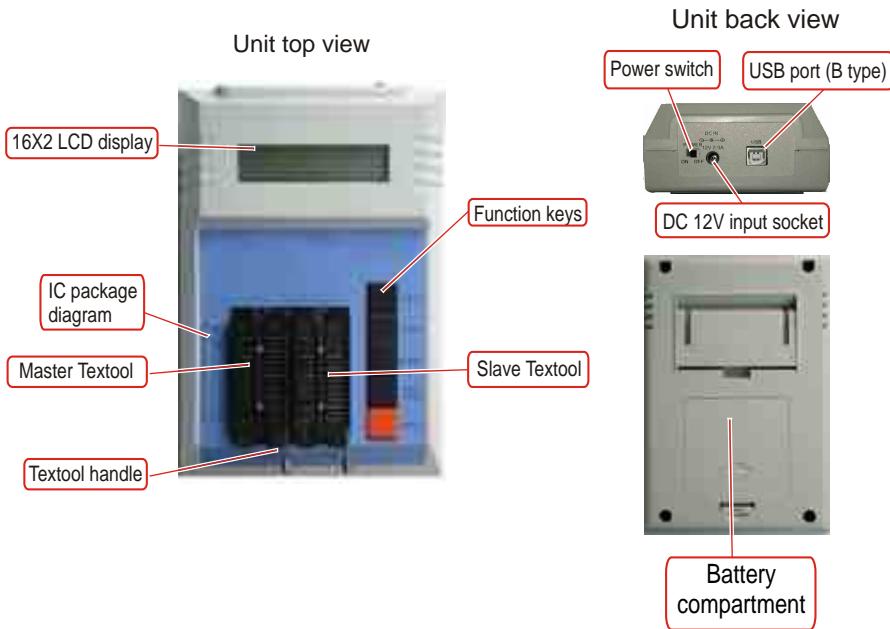


Adaptor



USB cable

Introduction



Attention

1. It is preferred to use an internal USB port of your PC. External USB ports are not recommended because of shared bandwidth and possible compatibility issues of other USB devices.
2. In PC mode operation, the Slave textool is used for all operations. In stand-alone mode, the source IC should be placed in the Master textool and the target IC in the Slave textool.

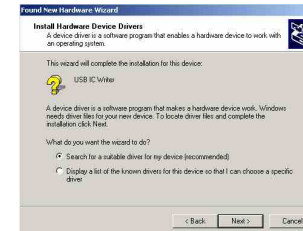
Install software and driver

1. Set Font Size to [small fonts] (96 dpi) to have the optimal display.
 - 1.1 Click the right button on the desktop. -> Select the [Properties] at the bottom of the function menu.
 - 1.2 Select [Settings] and then click the [Advanced] to set Font Size.
2. Install the software before connecting the Leaper-3C to the PC.
 - 2.1 Insert the software CD into your CD-ROM drive. Normally the installation program will start automatically (if Auto Run is enabled for your CD-drive). Follow the instructions to complete installation.
 - 2.2 If Auto Run doesn't work, click [Setup.exe] in the CD directory to start the installation.
3. Install the driver for the Leaper-3C hardware.
 - 3.1 Make sure the Leaper-3C power is [OFF]. Connect the power adaptor to the Leaper-3C and a power outlet.
 - 3.2 Connect the USB cable to PC USB port and to the programmer USB port.
 - 3.3 Turn the Leaper-3C power to [ON]. Windows will now start the [Found New Hardware Wizard].
 - 3.4 Install Hardware Device Driver -> Search for a suitable driver for my device (recommended)
 - 3.5 Select Optional search locations -> CD-ROM drives
 - 3.6 Driver Files Search Result -> Windows will find a driver for this device ...\\driver\\flashwriter.inf
 - 3.7 Click [Finish] in the Found New Hardware Wizard

The Leaper-3C software and drivers have now been installed and the unit is ready for usage.



[3.3]



[3.4]



[3.5]



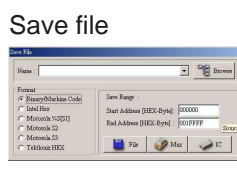
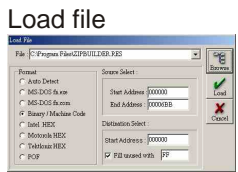
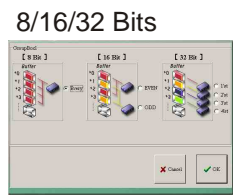
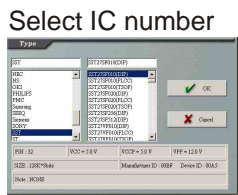
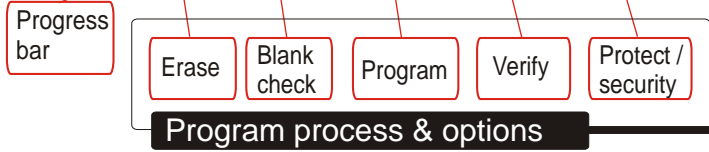
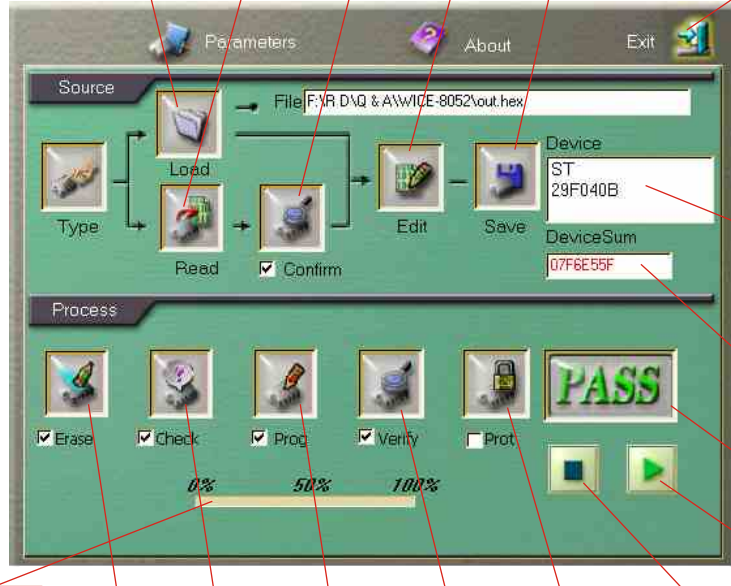
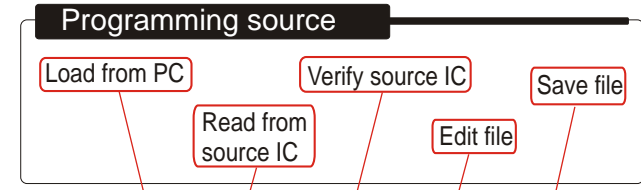
[3.6]



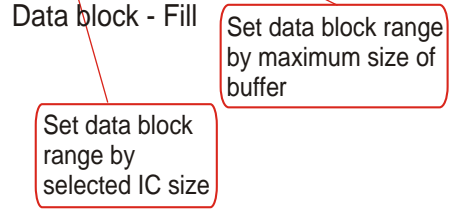
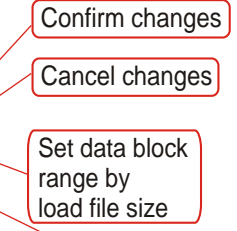
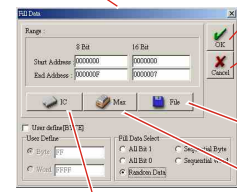
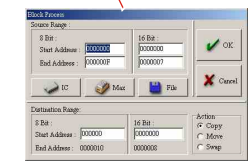
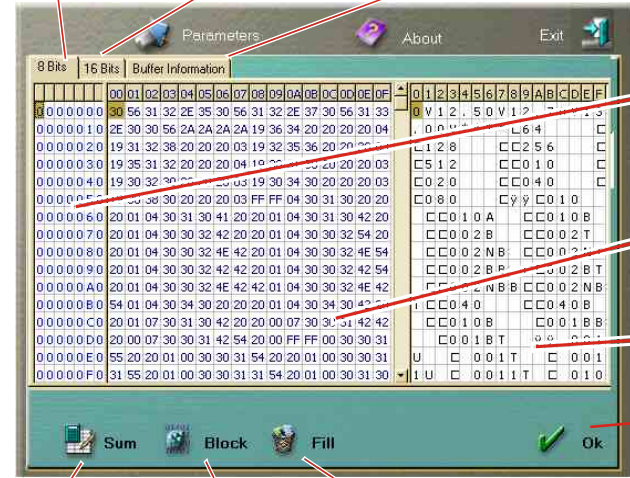
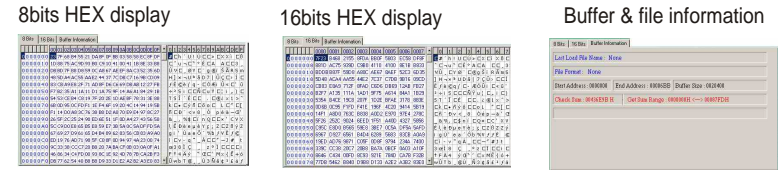
[3.7]

LEAP Electronic Co., Ltd.
 Tel : + 886-2-2999 1860
 Fax : + 886-2-2999 9873
 http : //www.leap.com.tw
 Email: service@leap.com.tw

Operation window



Source file editing



Stand-Alone Operation Mode

Main frame

LCD Display		Keypad	Function Descriptions
IC number	IC Checksum	FUNC.	Select IC Vendor
29F010	E700	TYPE	Switch IC Number
C+P+V	5.00V	BLANK	Blank Check to SLAVE
		VER./SUM	Read Checksum of MASTER and verify with SLAVE
		COPY	Copy MASTER to SALVE

Programming Voltage Procedure

Blank Check

LCD Display		Keypad	Function Descriptions
IC number	IC Checksum		
29F010	****		
Checking	>		

Status

O.K. → 29F010 ****
Checking PASS

ERROR → 29F010 ****
Checking FAIL

Read & Verify Checksum

LCD Display		Keypad	Function Descriptions
IC number	Previous IC Checksum		
29F010	26AF		
Verify	>		

Status

O.K. → 29F010 5612
Verify PASS

ERROR → 29F010 12EF
Verify FAIL

COPY

LCD Display		Keypad	Function Descriptions
IC number	Previous IC Checksum		
29F010	26AF		
Verify	>		

Erase, Check, Program, Verify & Protect according to Prog. Procedure

O.K. → 29F010 1A36
COPY PASS

ERROR → 29F010 1312
Verify FAIL

Wrong procedure

Select IC Vendor

LCD Display	Keypad	Function Descriptions
Select IC Vendor	FUNC.	Select Prog. Procedure
Select Vendor AMD	TYPE	Switch IC Number
IC brand	BLANK	No function
	VER./SUM	Confirm IC brand
	COPY	No function

Programming Procedure

LCD Display	Keypad	Function Descriptions
Select Prog. Procedure	FUNC.	Flash - to select IC Vendor 27CXXX- to select Algorithm
Select Procedure C+P+V	TYPE	Switch Prog. Procedure
Prog. Procedure	BLANK	No function
	VER./SUM	Confirm Prog. Procedure
	COPY	No function

Programming Algorithm

LCD Display	Keypad	Function Descriptions
Select Prog. Algorithm	FUNC.	Select Prog. Algorithm
Select Algorithm Q-100uS	TYPE	Switch Prog. Algorithm
Prog. Algorithm	BLANK	No function
	VER./SUM	Confirm Prog. Algorithm
	COPY	No function

** Only 27Cxxx **

Programming Voltage

LCD Display	Keypad	Function Descriptions
Select Prog. Voltage	FUNC.	Select IC Vendor
Select Voltage 12.70V	TYPE	Switch Prog. Voltage
Prog. Voltage	BLANK	No function
	VER./SUM	Confirm Prog. Voltage
	COPY	No function

** Only 27Cxxx **