

MAFL-010608



MoCA/SAT Diplex Filter 650 - 875 / 950 - 3000 MHz

Rev. V2

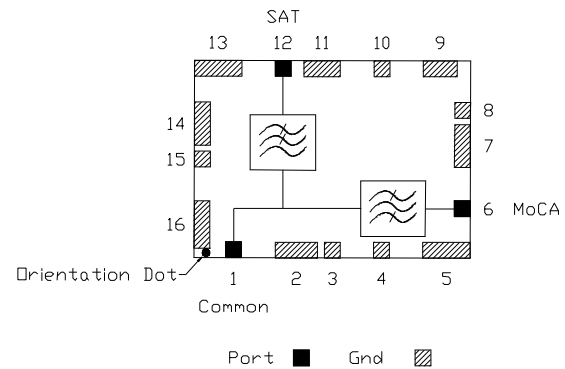
Description

- M/A-COM Technology Solutions MAFL-010608 is a surface mount diplex filter unit designed for MoCA & Satellite applications.

Features

- 75 Ohm
- SMT unit
- RoHS* Compliant
- MoCA BPF 650-875 MHz
- SAT HPF 950-3000 MHz

Functional Schematic



Tape & Reel Information

Parameter	Units	Value
Qty per reel	-	300
Reel Size	mm	330
Tape Width	mm	56.00
Pitch	mm	32.00
Ao	mm	25.30
Bo	mm	35.45
Ko	mm	3.80
Orientation	-	F30
Reference Application Note ANI-019 for orientation		

Pin Configuration

Function	Pin Number
Common Port	1
MoCA Port	6
SAT Port	12
Ground	2-5, 7-11, 13-16
Not connected	-

Ordering Information

Part Number	Package
MAFL-010608	Tape & Reel

1 * Restrictions on Hazardous Substances, European Union Directive 2002/95/EC

M/A-COM Technology Solutions Inc. (MACOM) and its affiliates reserve the right to make changes to the product(s) or information contained herein without notice. Visit www.macom.com for additional data sheets and product information.

For further information and support please visit:
<https://www.macom.com/support>

MoCA/SAT Diplex Filter 650 - 875 / 950 - 3000 MHz

Rev. V2

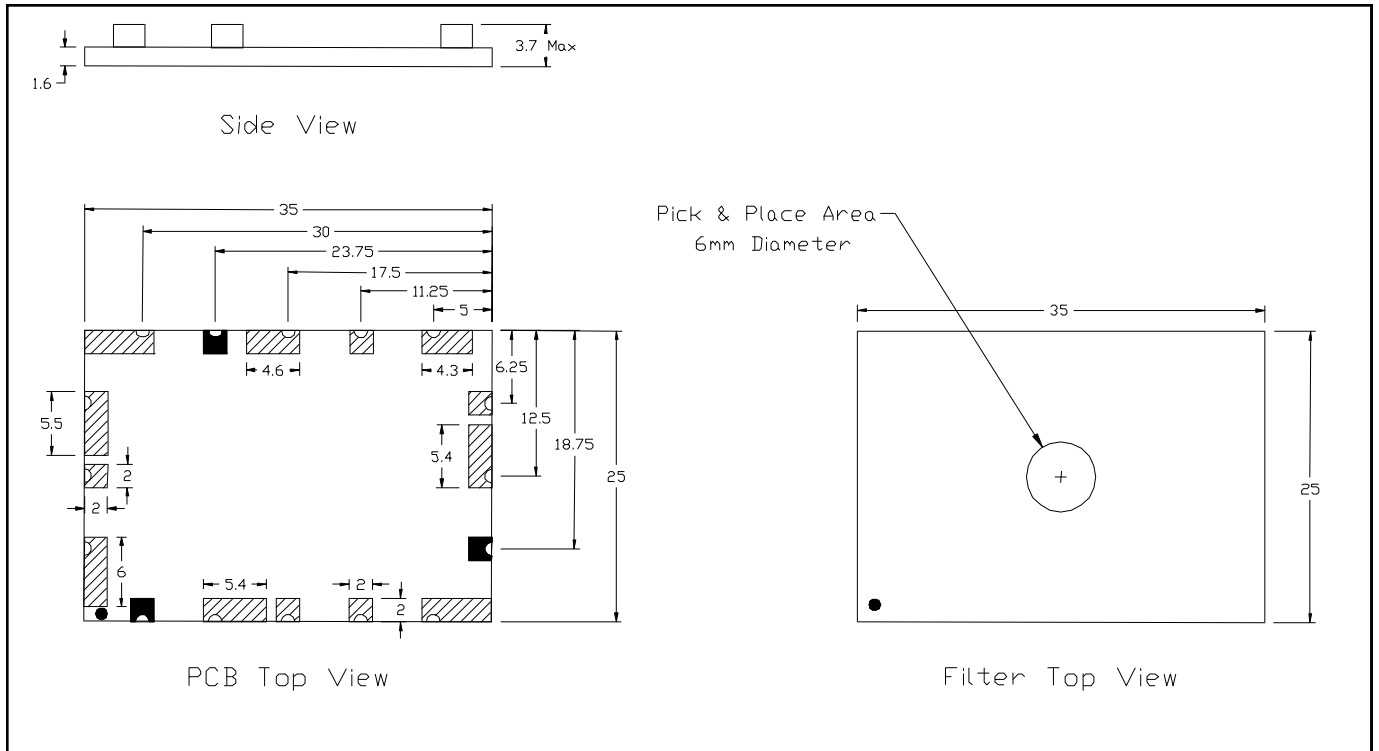
Electrical Specifications: $T_A = 25^\circ\text{C}$, $Z_0 = 75\Omega$

Parameter	Units	Min	Typ	Max
MoCA Band				
Insertion Loss				
650 - 875 MHz	dB	-	2.5	3.0
Rejection				
500 - 565 MHz	dB	35	40	-
565 - 575 MHz	dB	30	33	-
950 - 960 MHz	dB	32	33	-
960 - 3000 MHz	dB	37	39	-
SAT Band				
Insertion Loss				
950 - 1000 MHz	dB	-	2.75	3.0
1000 - 3000 MHz	dB	-	1.8	3.0
Rejection				
500 - 855 MHz	dB	37	39	-
855 - 865 MHz	dB	33	35	-
865 - 875 MHz	dB	29	31	-
Port to Port Isolation				
MoCA Port into SAT Port				
500 - 855 MHz	dB	37	39	-
855 - 865 MHz	dB	33	35	-
865 - 875 MHz	dB	29	31	-
875 - 950 MHz	dB	10	12	-
950 - 960 MHz	dB	32	33	-
960 - 3000 MHz	dB	37	39	-
SAT Port into MoCA Port				
950 - 960 MHz	dB	32	33	-
960 - 3000 MHz	dB	37	39	-
Return Loss				
Common Port				
650 - 875 MHz	dB	10	10.5	-
950 - 3000 MHz	dB	10	10.25	-
MoCA Port				
650 - 875 MHz	dB	9.5	10.5	-
SAT Port				
950 - 3000 MHz	dB	10	10.25	-

Recommended Maximum Ratings

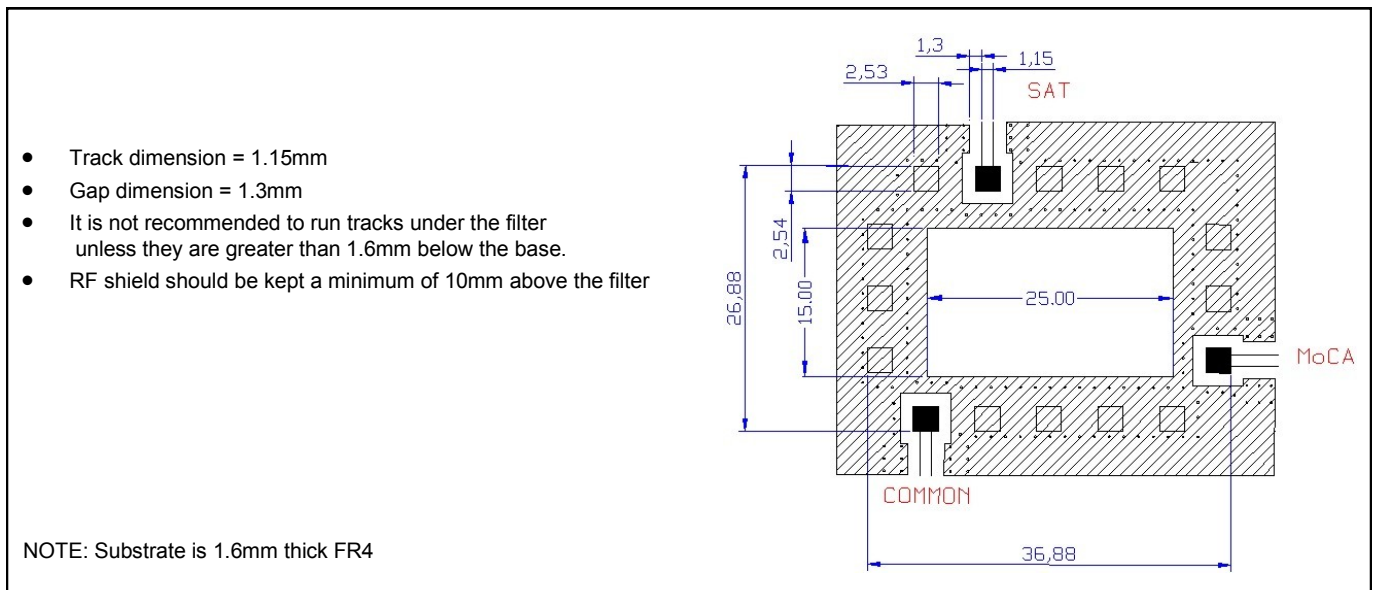
Parameter	Value
Storage Temperature	-40°C to +85°C
Operating Temperature	-40°C to +85°C

Outline Drawing:



Dimensions in mm. Tolerance: $.x \pm 0.1$ unless otherwise noted

Recommended PCB Configuration



NOTE: Substrate is 1.6mm thick FR4

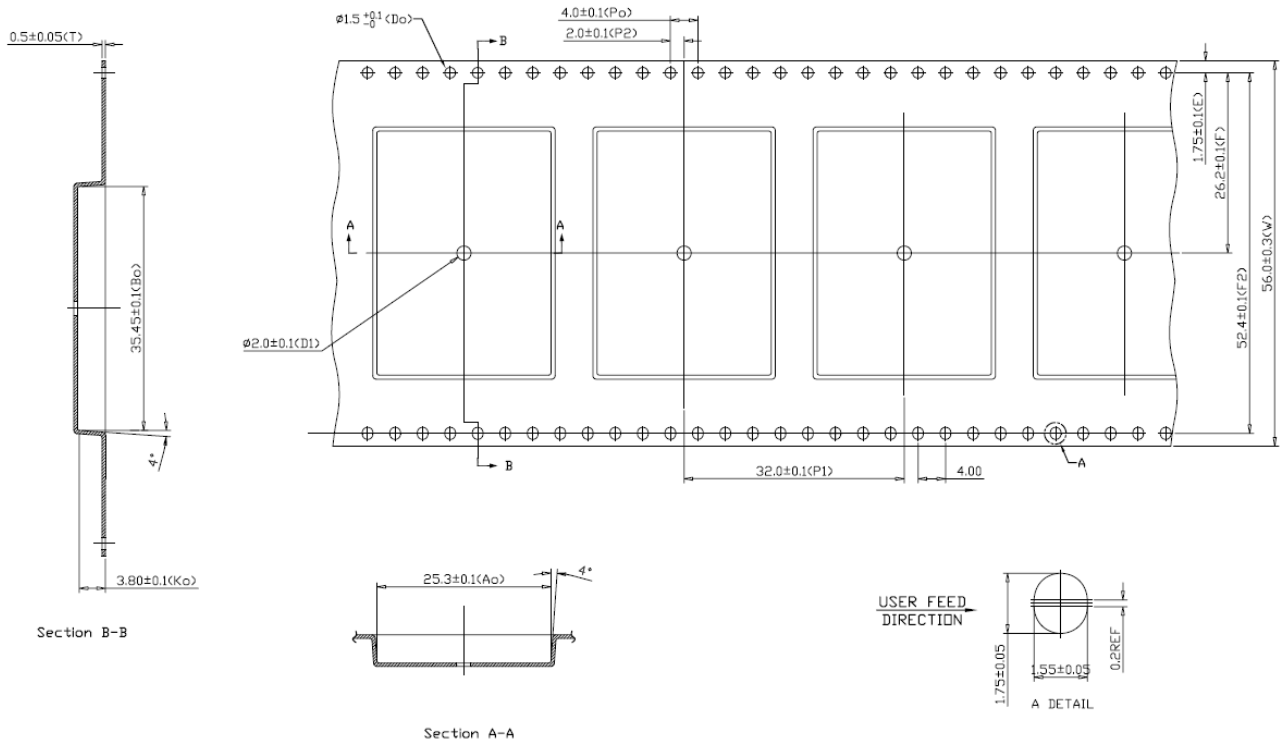
3 Dimensions in mm. Tolerance: $.x \pm 0.1$ unless otherwise noted

MAFL-010608



MoCA/SAT Diplex Filter
650 - 875 / 950 - 3000 MHz

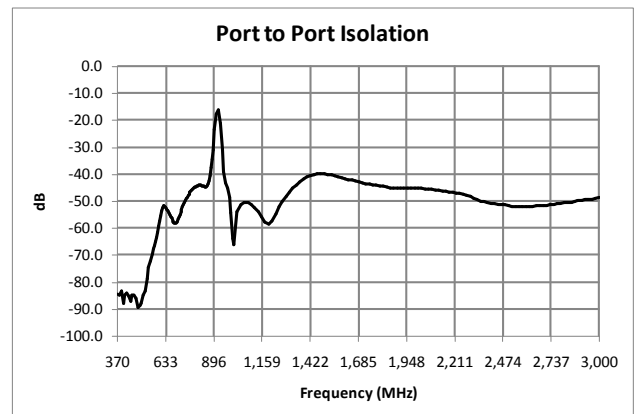
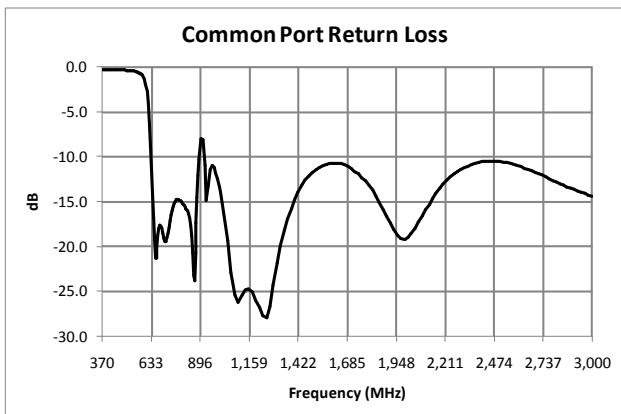
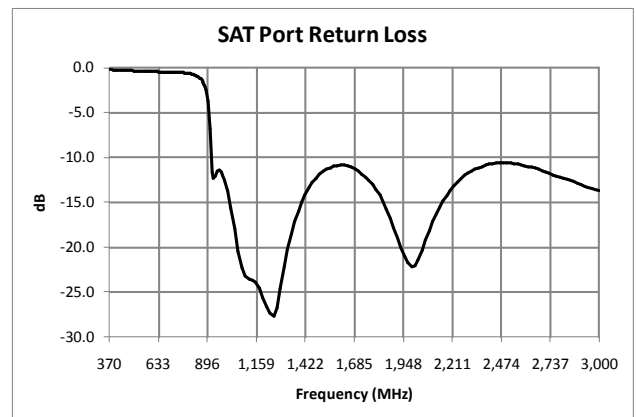
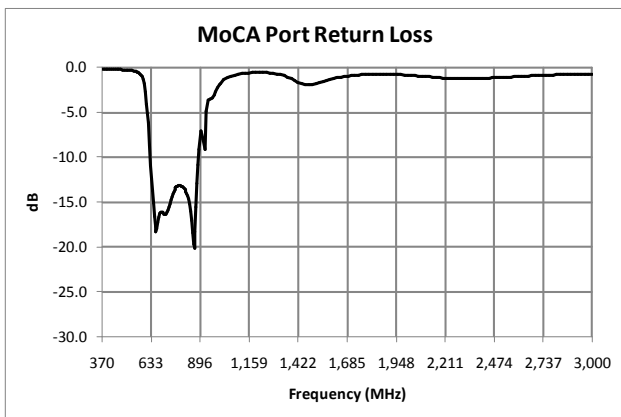
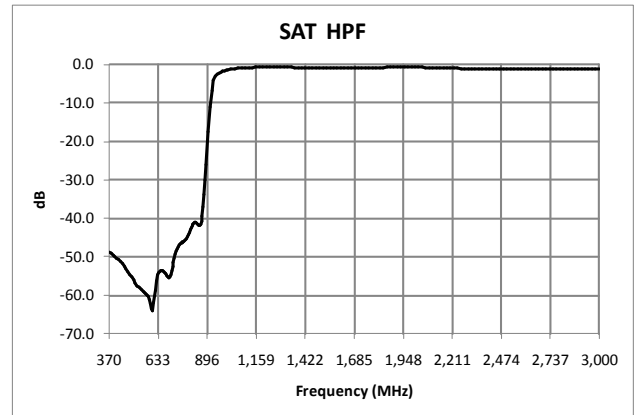
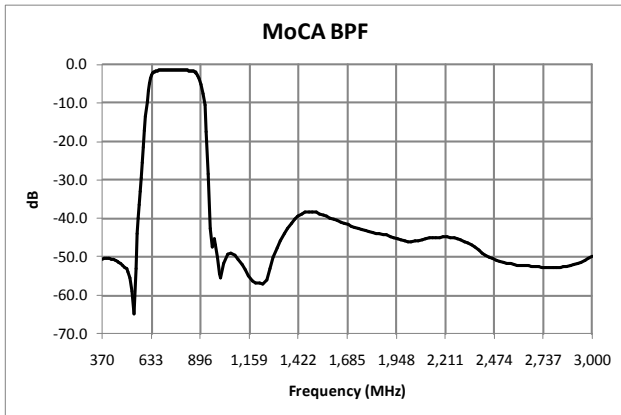
Rev. V2



MoCA/SAT Diplex Filter 650 - 875 / 950 - 3000 MHz

Rev. V2

Typical Performance Curves at +25°C



M/A-COM Technology Solutions Inc. All rights reserved.

Information in this document is provided in connection with M/A-COM Technology Solutions Inc ("MACOM") products. These materials are provided by MACOM as a service to its customers and may be used for informational purposes only. Except as provided in MACOM's Terms and Conditions of Sale for such products or in any separate agreement related to this document, MACOM assumes no liability whatsoever. MACOM assumes no responsibility for errors or omissions in these materials. MACOM may make changes to specifications and product descriptions at any time, without notice. MACOM makes no commitment to update the information and shall have no responsibility whatsoever for conflicts or incompatibilities arising from future changes to its specifications and product descriptions. No license, express or implied, by estoppels or otherwise, to any intellectual property rights is granted by this document.

THESE MATERIALS ARE PROVIDED "AS IS" WITHOUT WARRANTY OF ANY KIND, EITHER EXPRESS OR IMPLIED, RELATING TO SALE AND/OR USE OF MACOM PRODUCTS INCLUDING LIABILITY OR WARRANTIES RELATING TO FITNESS FOR A PARTICULAR PURPOSE, CONSEQUENTIAL OR INCIDENTAL DAMAGES, MERCHANTABILITY, OR INFRINGEMENT OF ANY PATENT, COPYRIGHT OR OTHER INTELLECTUAL PROPERTY RIGHT. MACOM FURTHER DOES NOT WARRANT THE ACCURACY OR COMPLETENESS OF THE INFORMATION, TEXT, GRAPHICS OR OTHER ITEMS CONTAINED WITHIN THESE MATERIALS. MACOM SHALL NOT BE LIABLE FOR ANY SPECIAL, INDIRECT, INCIDENTAL, OR CONSEQUENTIAL DAMAGES, INCLUDING WITHOUT LIMITATION, LOST REVENUES OR LOST PROFITS, WHICH MAY RESULT FROM THE USE OF THESE MATERIALS.

MACOM products are not intended for use in medical, lifesaving or life sustaining applications. MACOM customers using or selling MACOM products for use in such applications do so at their own risk and agree to fully indemnify MACOM for any damages resulting from such improper use or sale.