

SPLIT CORE CURRENT TRANSFORMER



P4019

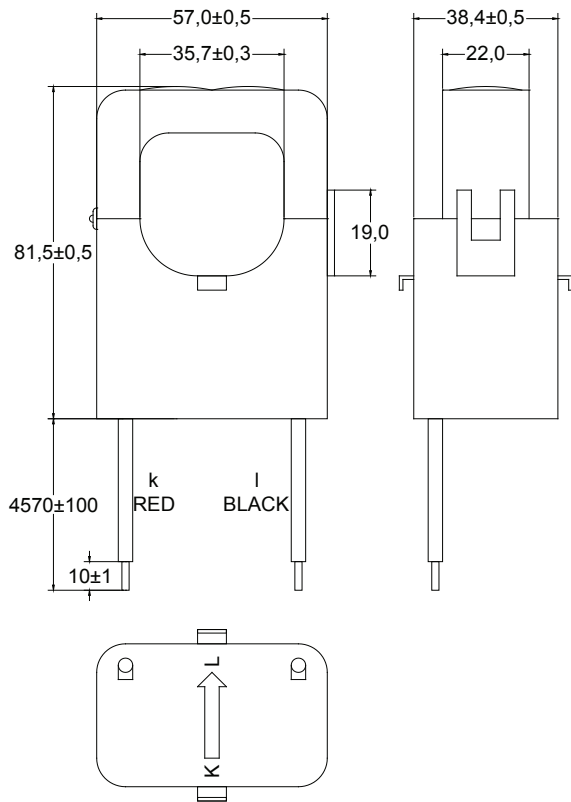


- Current transformer for measuring or monitoring current for control and/or load centers
- Split core design allows easy installation mounting without removing existing cables
- High accuracy of 0.5% for precise current measurement
- Compact size for easy installation in tight spaces
- RoHS Compliant Product
- Custom design available

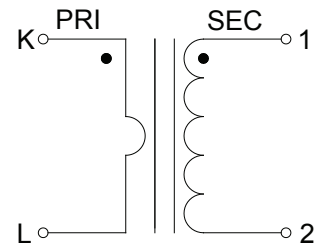
ELECTRICAL PARAMETERS @25°C

| | | | |
|---|----------------------|---|------------------|
| Rated Primary Current: | 400A Nom (480A max) | Dielectric Withstanding Voltage: | 2.5kV, 1mA, 60s |
| Turns Ratio: | 1:80±1%, (K-L):(1-2) | Insulation Resistance: | 500Vdc/100MΩ Min |
| Current Ratio: | 400A/5A | Impluse Withstand Voltage: | 5KV Peak |
| Accuracy @ Rb5VA: | 0.5% | Operating Temperature: | -40 to +85°C |
| Phase error @ rated current range: | ≤1° | Storage Temperature: | -40 to +90°C |

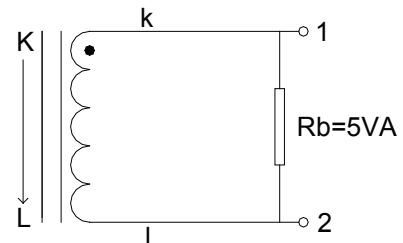
DIMENSIONS (mm)



SCHEMATIC



TEST CIRCUIT



Dimensions
 Unless otherwise specified, all tolerances are:
 inch: XX : ±0.010 .XXX : ±0.005
 mm: X,X : ±0.254 X,XX : ±0.13

Product performance is limited to specified parameters. Data is subject to change without prior notice.

Tel: 310-325-1043
 Fax: 310-325-1044

www.mpsind.com
 sales@mpsind.com