

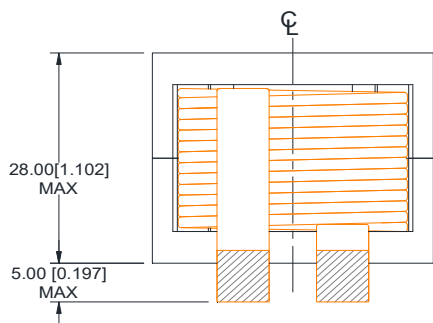
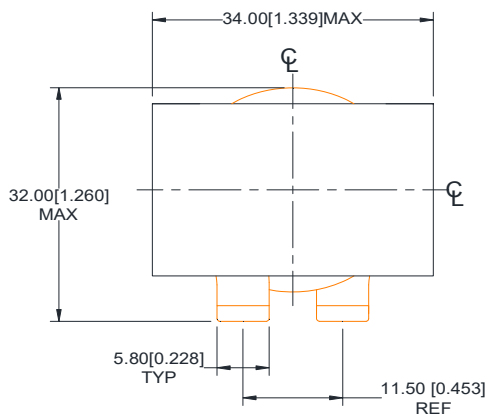
Rev	Description	By	Date
A	Released for Production	KLC	25-Aug-16

ELECTRICAL SPECIFICATIONS @ 25°C

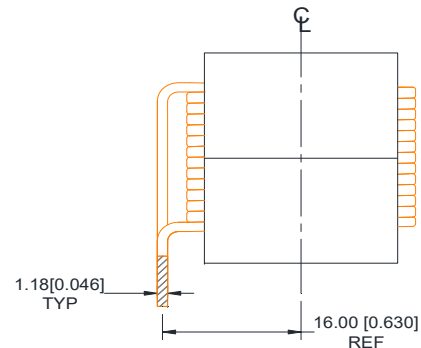
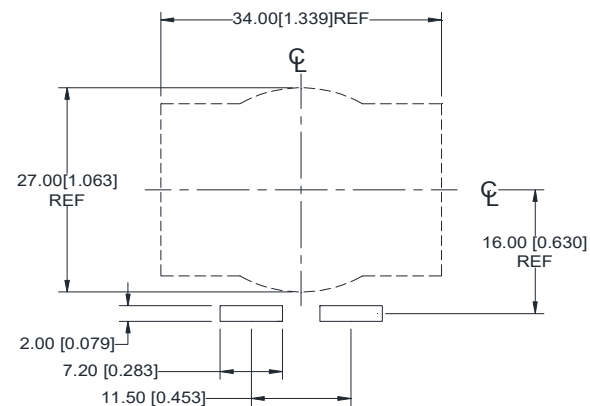
L: 16.0 $\mu\text{H} \pm 15\%$ @ 100kHz, 1.0 Vrms
Isat: $\Delta L \leq 10\%$ @ 48 A
 $\Delta L \leq 20\%$ @ > 60 A
 $\Delta L \leq 30\%$ @ > 82 A

Irms: $\Delta T \leq 20^\circ\text{C}$ @ 31 A
 $\Delta T \leq 40^\circ\text{C}$ @ 47 A
DCR: 2.2 m Ω Nom ; 2.8 m Ω Max
SRF (TYP) 22 MHz
Capacitance (TYP) 3.3 pF
Hipot: 1000 Vdc, 1 mA, 5 sec, wdg to core
Insulation Class: Class H 180 °C
RoHS Compliant: Yes

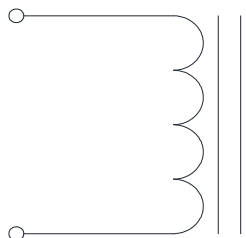
Dimensions



Recommended PCB Layout



SCHEMATIC



MARKING

MPS
 HWI3428-047A-160H Rev
 Date Code

Notice of Proprietary Property

These drawings and specifications are the property of MPS and shall not be reproduced, copied or used as the basis of manufacture of sale of apparatus without express written authorization

Dimensions: mm[inch]

Unless otherwise specified
 .XX \pm 0.51 [0.020"]
 .XXX \pm 0.254 [0.010"]

DRAWN BY:
 CHECKED BY:

KLC
 AG
 15-Aug-16
 25-Aug-16

SIZE
A

Part Number

HWI3428-047A-160H

WEIGHT: 135 gram

SHEET: 1 OF 2

REV

A



MPS INDUSTRIES, INC.

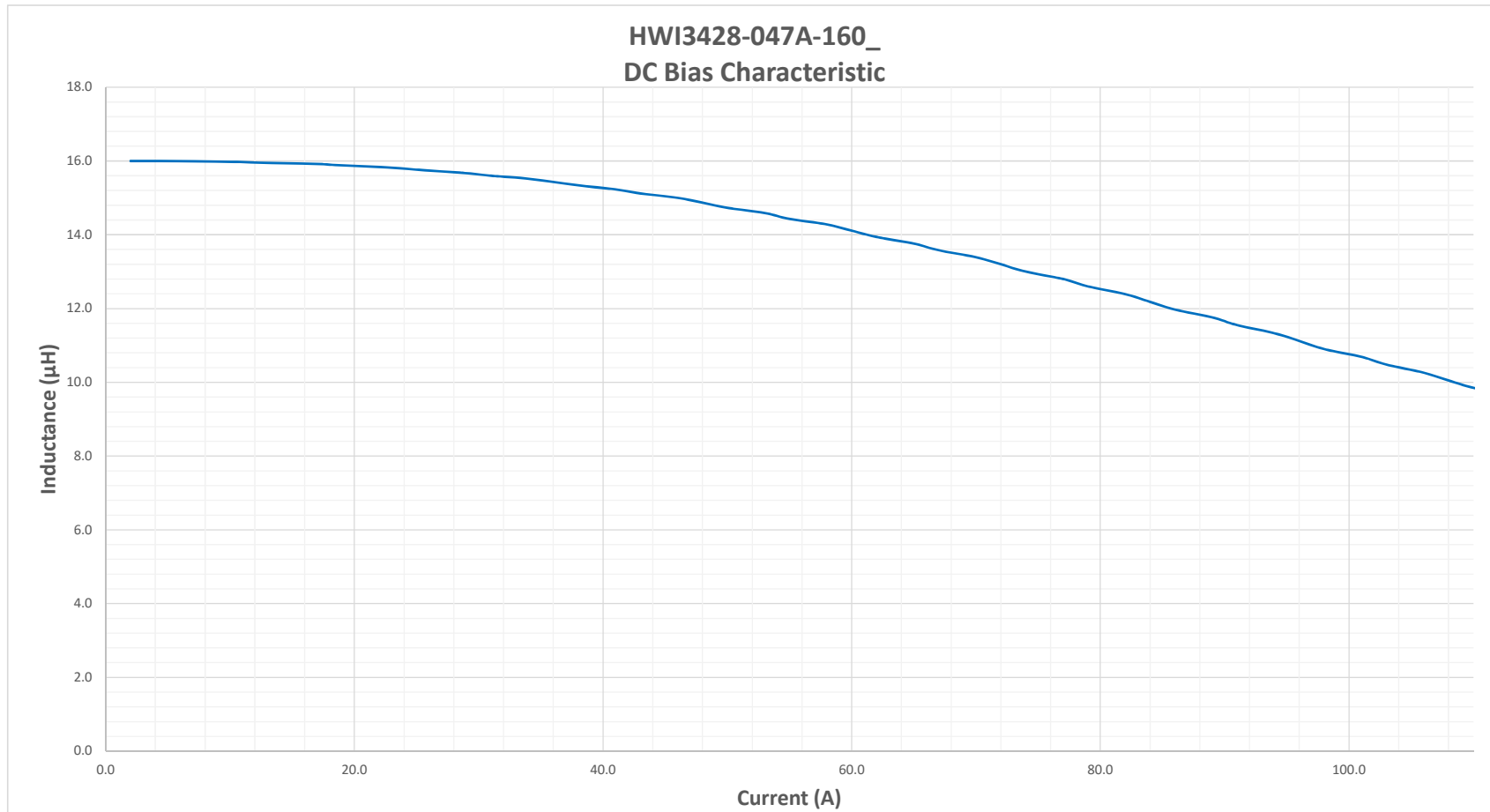
www.mpsind.com

Tel: (310) 325-1043 Fax: (310) 325-1044

Description

Helical Wound Inductor

Rev	Description	By	Date
A	Released for Production	KLC	25-Aug-16



Notice of Proprietary Property

These drawings and specifications are the property of MPS and shall not be reproduced, copied or used as the basis of manufacture of sale of apparatus without express written authorization


Dimensions: mm[inch]

Unless otherwise specified
 .XX ± 0.51[0.020"]
 .XXX ± 0.254[0.010"]

DRAWN BY:
CHECKED BY:

KLC
AG
15-Aug-16
25-Aug-16

SIZE
A

		MPS INDUSTRIES, INC. www.mpsind.com Tel: (310) 325-1043 Fax: (310) 325-1044	
		Description <p style="text-align: center;">Helical Wound Inductor</p>	
Part Number	HWI3428-047A-160H		REV A
SHEET: 2 OF 2			