

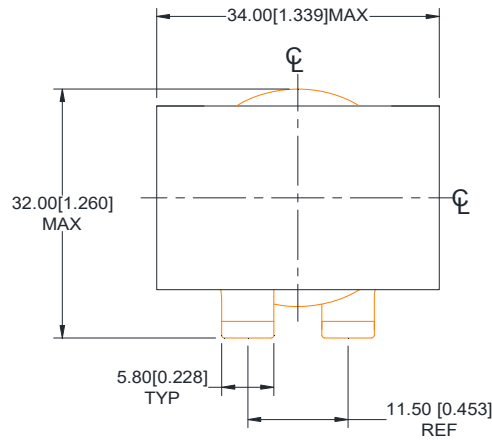
Rev	Description	By	Date
1	Preliminary	MIG	6-Apr-16
2	Changed Wires and Updated BOM	MIG	12-May-16
A	Increase current rating, modify part number and released for Production	KLC	12-Aug-16

ELECTRICAL SPECIFICATIONS @ 25°C

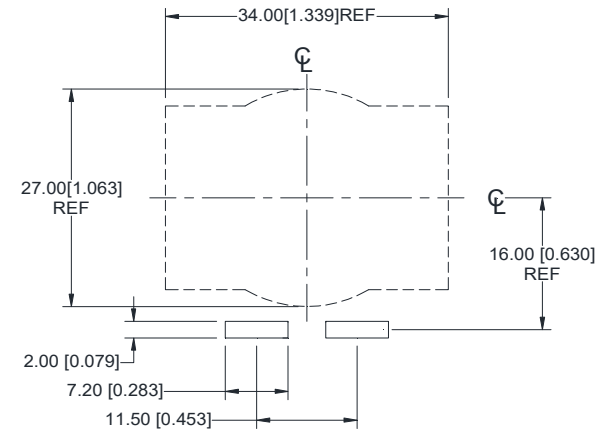
L: 11.0 $\mu\text{H} \pm 15\%$ @ 100kHz, 1.0 Vrms
 Isat: $\Delta L \leq 10\%$ @ 39 A
 $\Delta L \leq 20\%$ @ 57 A
 $\Delta L \leq 30\%$ @ 75 A

 Irms: $\Delta T \leq 20^\circ\text{C}$ @ 36 A
 $\Delta T \leq 40^\circ\text{C}$ @ 55 A
 DCR: 1.5 m Ω Nom ; 1.9 m Ω Max
 SRF (TYP) 23 MHz
 Capacitance (TYP) 4.30 pF
 Hipot: 1000 Vdc, 1 mA, 5 sec, wdg to core
 Insulation Class: Class H 180 °C
 RoHS Compliant: Yes

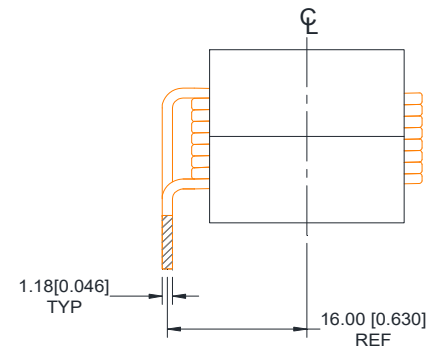
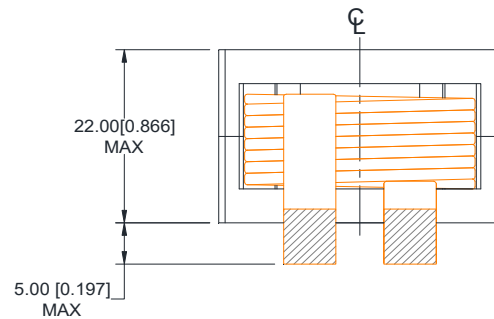
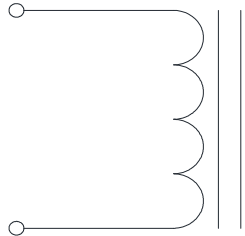
Dimensions



Recommended PCB Layout



SCHEMATIC



MARKING

MPS
 HWI3422-055A-110H Rev
 Date Code

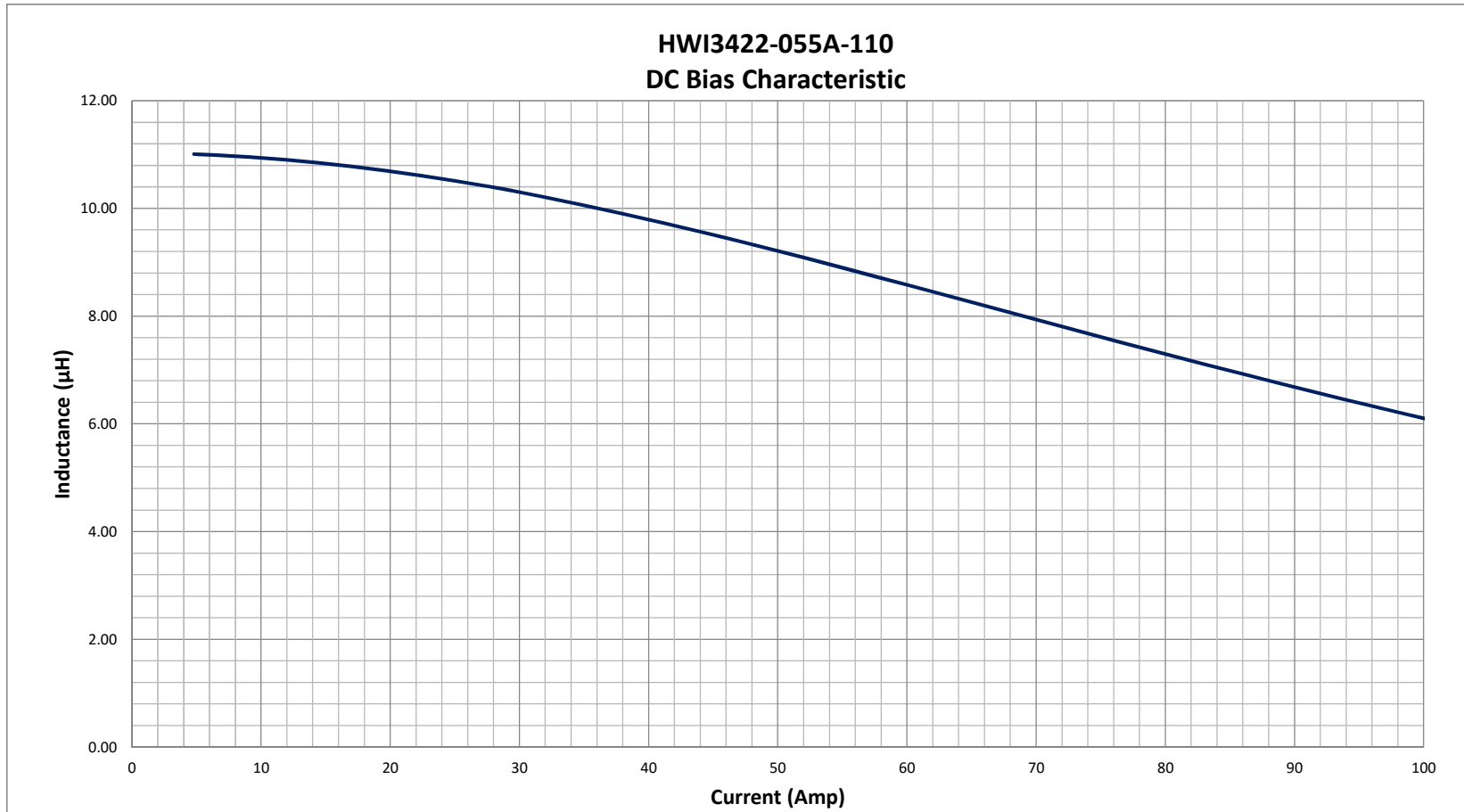
Notice of Proprietary Property


These drawings and specifications are the property of MPS Industries and shall not be reproduced, copied or used as the basis of manufacture of sale of apparatus without express written authorization from MPS Industries.

Dimensions: mm [inch] Unless otherwise specified .XX ± 0.51 [0.020"] .XXX ± 0.254 [0.010"]	DRAWN BY: CHECKED BY:	MIG AG	6-Apr-16 11-Apr-16	SIZE A
--	--------------------------	-----------	-----------------------	------------------

		MPS INDUSTRIES, INC. www.mpsind.com Tel: (310) 325-1043 Fax: (310) 325-1044	
Description Helical Wound Inductor			
Part Number		REV	
HWI3422-055A-110H		A	
WEIGHT: 100 gram		SHEET: 1 OF 2	

Rev	Description	By	Date
1	Preliminary	MIG	6-Apr-16
2	Changed Wires and Updated BOM	MIG	12-May-16
A	Increase current rating, modify part number and released for Production	KLC	12-Aug-16



Notice of Proprietary Property These drawings and specifications are the property of MPS Industries and shall not be reproduced, copied or used as the basis of manufacture or sale of apparatus without express written authorization from MPS Industries.				 MPS INDUSTRIES, INC. www.mpsind.com Tel: (310) 325-1043 Fax: (310) 325-1044		
						Description
				Helical Wound Inductor		
Dimensions: mm [inch] Unless otherwise specified .XX ± 0.51[0.020"] .XXX ± 0.254[0.010"]		DRAWN BY: KLC CHECKED BY: AG	6-Apr-16 11-Apr-16	SIZE A	Part Number HWI3422-055A-110H	REV A
SHEET: 2 OF 2						