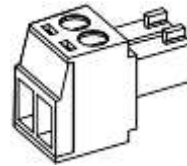


Product APPLICATION Guide

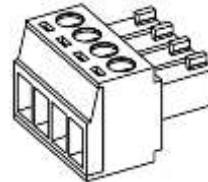
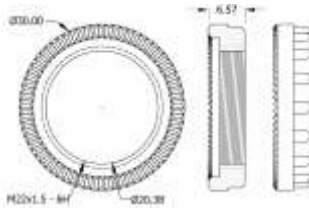
22mm Panel Alarms (ZA & ZT Series)

22MMGASKET
Replacement
NEMA Gasket



22MMPLUG-2
Replacement
2 Prong Plug

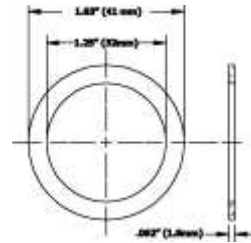
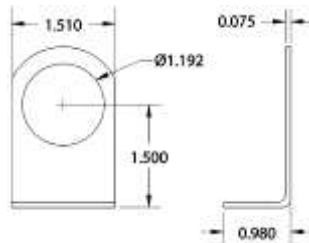
22MMNUT
Replacement
Black Plastic Nut



22MMPLUG-4
Replacement
4 Prong Plug

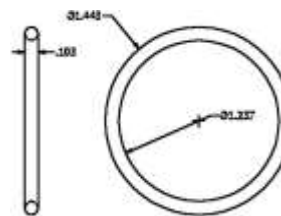
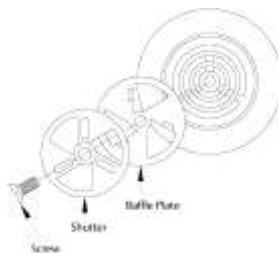
30mm Panel Alarms SC, SCE, SCH, SCL, VSB Series

ACC01
Accessory
Aluminum Bracket
External Mounting



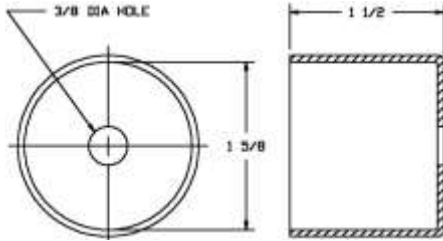
ACC03
Accessory
NEMA Gasket
3R, 4X, 12; IP-66

SCVC
Accessory
Manual Sound Baffle
Mounts on Front Grille



ACC09
Accessory
IP-67 Gasket

30mm Panel Alarms (Con't) SC, SCE, SCH, SCL, VSB Series

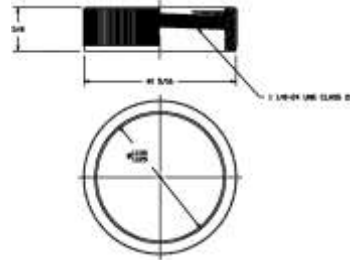


RSB1

Accessory

Rubber Electrical Insulating Boot

- Mounts to Back of Alarm
- Use with 48, 120, 250 Vac Alarms with Exposed Terminals

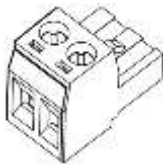


BNR1; CNR1; PNR1

Replacement

- BNR1- Black Aluminum
- CNR1- Clear Aluminum
- PNR1- Black Plastic

30mm Panel Alarms- SCE Series Only



ACC03

Replacement

2 Prong Plug

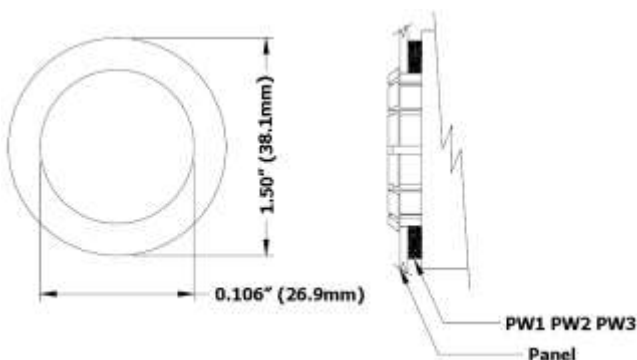
Snap-In Panel Alarms

P/N's: SNP2R, SNP428R, SNP428FR

PW1, PW2, PW3

Accessory

Compression Washers

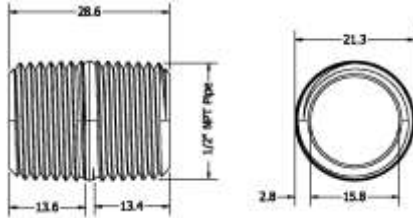


Part Number	Part Thickness	Panel Thickness
PW1	.063"	11-12GA (.125-.109)
PW2	.125"	13-17GA (.093-.056)
PW3	.187"	18-22GA (.050-.031)

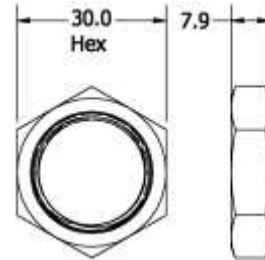
Continued

Stacklights- JT Series

Direct Mounting Replacement Parts

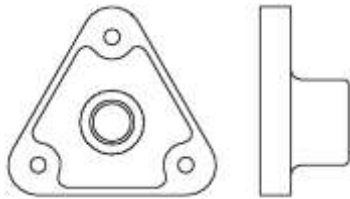


J-DIRECTMOUNTPIPE
Replacement
1/2" NPT Pipe- 28.6mm long

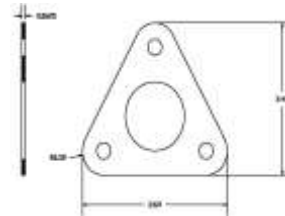


J-NUT
Replacement
Hex Nut for 1/2" NPT Pipe

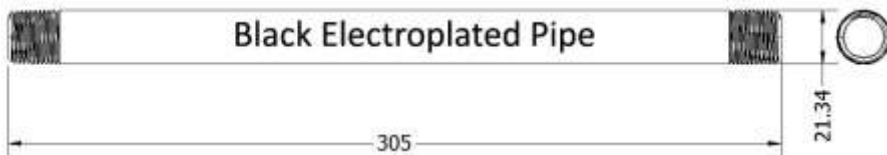
Pole Mounting Replacement Parts



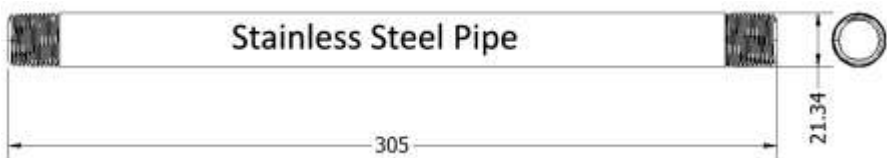
J-MOUNTINGBRACKET
Replacement
Bottom Bracket



J-GASKET
Replacement
Gasket for Bottom Bracket



J-POLE-E
Replacement
Black Electroplated Pole



J-POLE-S
Replacement
Stainless Steel Pole

Call 317-612-1000 or Visit www.mallory-sonalert.com for More Details