



Providing flexible solutions for the  
**ELECTRONICS INDUSTRY**

*“Marian continues to amaze us. By utilizing innovative manufacturing techniques, Marian has helped differentiate our product from others in the market. Marian is constantly looking for ways to improve our product while trying to lower costs. Marian continues to be one of our most trusted suppliers and is crucial to our growth in upcoming years.”*

– CEO, Electronics Manufacturer



[www.marianinc.com](http://www.marianinc.com)

[sales@marianinc.com](mailto:sales@marianinc.com)

 [marianincorporated](https://www.facebook.com/marianincorporated)

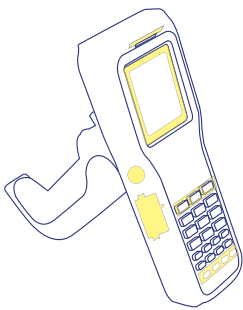
 [@Marianinc](https://twitter.com/Marianinc)

 [marian-inc.](https://www.linkedin.com/company/marian-inc)



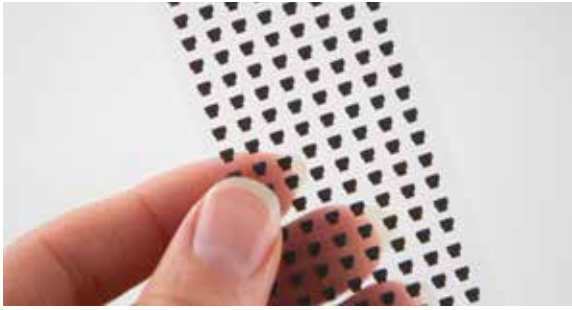
## Prototype through Full Production

Marian is an industry leader in manufacturing precision die cut components for electronics. As electronic devices become smaller, more sophisticated and more powerful, the challenges facing today's design engineers are becoming more complex. Large OEM Electronics Manufacturers choose us as their partner because of our material expertise, unmatched precision at high volumes, engineering experience, and global capacity. Our teams are ready to support product cycles from prototype, to development builds, to full production.



Marian's precision components can be found in a multitude of products. In the hand scanner pictured, we manufacture the following:

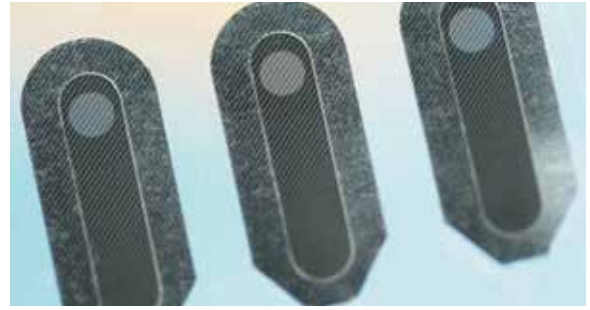
- LCD gasket
- ESD foil
- Dust filter
- EMI/RFI shield
- Insulation tape
- Light filter
- Graphic overlay



## Materials

With the most extensive material knowledge in the industry, Marian will find the right material for your application. Our engineers and sales associates are familiar with thousands of materials ranging from inexpensive sponges and foams to high-end foils and absorbers. Marian has a long-standing relationship with premier material manufacturers such as 3M, Rogers, Tesa, GE, Parker Chomerics, Polymer Science, and Saint Gobain.

- Sponges and Foams
- Adhesives and Tapes
- Conductive Tapes
- Graphite
- Thermal Pads
- Copper, Aluminum Foils
- Films, Rubber, TPR
- Filter Fabrics
- Urethanes
- Silicones
- Acoustic Mesh



## Capabilities

Marian continuously invests in and creates innovative manufacturing technologies to produce component parts. We improve assembly processes and reduce costs. Whether you need to meet tight tolerances, laminate materials, utilize zone coating, or manufacture parts for precision “pick-and-place” equipment, Marian will work with you to provide a flexible solution.

- Rapid Prototyping
- Rotary Die Cutting
- Slitting
- Flat Bed Die Cutting
- Spooling
- Laser
- Plotter
- Laminating
- Assembly Machine Automation
- Screen Printing

## Applications

At Marian, we start with your problem and develop a solution. Our experienced team of engineers and sales associates collaborates with you to produce 100% custom applications that meet your needs. From initial material choice to final packaging, we focus on providing solutions that help bring your design to reality.

- Optical Grade Films
- Spacers and Cushioning Solutions
- Acoustic Mesh Gaskets
- Speaker + Microphone Filters
- Component Bonding + Fastening Solutions
- Moisture Indicators
- LCD Gaskets
- Thermal Interface Components
- Insulators
- Conductive Adhesives & Foams





Marian is a global leader in providing precision die-cut component parts for customers in the consumer electronics, automotive, and medical industries. With over 500,000 square feet of production space worldwide and state-of-the-art manufacturing technologies, Marian engineers work closely with customers to solve complex manufacturing and assembly problems. Marian’s responsive approach, in-depth material knowledge, innovative manufacturing capabilities, and high standards for quality all add up to provide you with the best component solutions in the industry.



**Indianapolis, IN**  
800.773.0062

**Fort Worth, TX**  
817.332.6151

**Bay Area, CA**  
(Sales and Engineering Office)  
800.773.0062

**Singapore**  
65.6280.8034

**Chicago, IL**  
630.293.7800

**Milwaukee, WI**  
414.672.3000

**Marian Europe**  
49.4241.8026400

**Suzhou, China**  
86.512.6283.3438

**El Paso, TX**  
915.591.8558

**Shenzhen, China**  
86.755.2967.0073