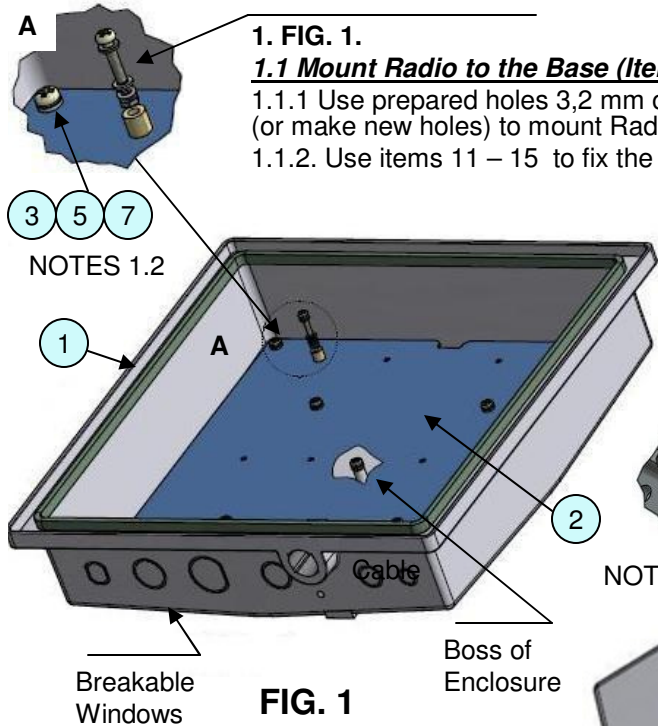


11 12 13 14 15 NOTES 1.1

MK-EL30 Enclosure Mounting Instructions



1. FIG. 1.

1.1 Mount Radio to the Base (Item 2).

1.1.1 Use prepared holes 3,2 mm on the Base for Radio (sheet metal) item 2 (or make new holes) to mount Radio.

1.1.2. Use items 11 – 15 to fix the Radio. (See detail "A").

1.2 Mount Base for Radio to Enclosure.

1.2.1. Align Base for Radio item 2 with 9 inside bosses of the Enclosure item 1 as shown.

1.2.2. Fasten Base for Radio with items 3, 5, 7 (see detail 'A').

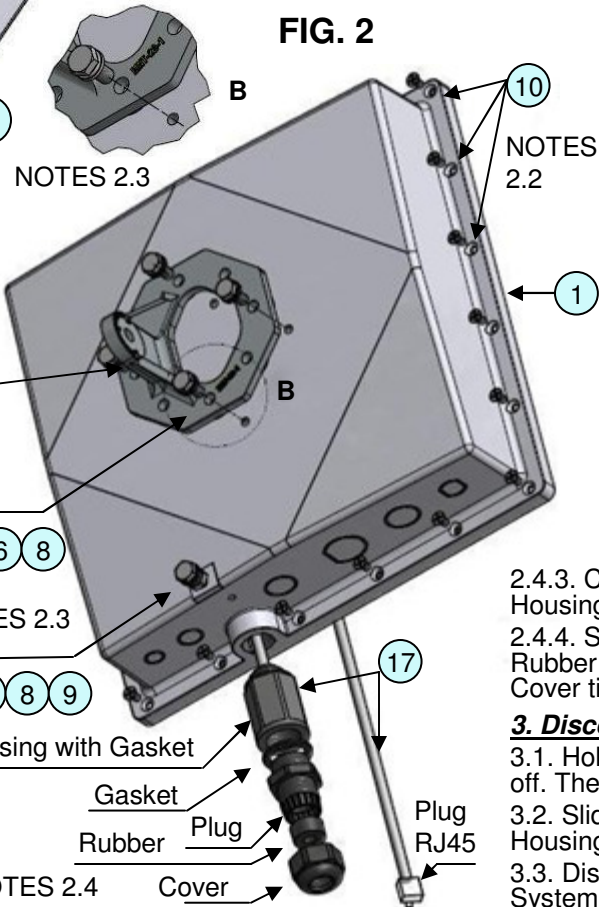


FIG. 2

FIG. 2.

2.1. Connect RJ45 Ethernet system item 17.

2.1.1. Remove Nut (not shown). Don't remove Gasket!

2.1.2. Pass Cable through Enclosure's hole in order to plug RJ45 inside.

2.1.3. Screw tightly Housing of Ethernet system with Gasket into Enclosure's hole in order that the Gasket will be pressed to Enclosure surface.

2.1.4. Connect plug RJ45 to jack RJ45 of Radio (not shown).

2.2. Connect Enclosure (1) to antenna Backplane.

2.2.1 Align mounting holes of the Enclosure item 1 with 20 PEM BSOS832-12 of Antenna's Base (not shown).

PAY ATTENTION Mounting holes of the Enclosure are placed asymmetrically to exclude wrong Enclosure's position.

2.2.2. Fasten Enclosure to Antenna with 20 Screws item 10. Fix the Screws with locktite (not supplied).

2.2.3. Align holes of MNT-22's base with 4 holes 1/4-20 in the Enclosure item 1.

2.2.4. Fix MNT-22's base to the Enclosure with items 4, 6, 8.

2.2.5. Use items 4, 6, 8, 9 for grounding.

2.2.6. Assembly of MNT-22 - see instruction.

2.3 Connect of MNT-22 item 16.

2.3.1. Align holes of MNT-22's base with 4 holes 1/4-20 in the Enclosure item 1.

2.3.2. Fix MNT-22's base to the Enclosure with items 4, 6, 8.

2.3.3. Use items 4, 6, 8, 9 for grounding.

2.3.4. Assembly of MNT-22 - see instruction.

2.4. Connect outer Cable.

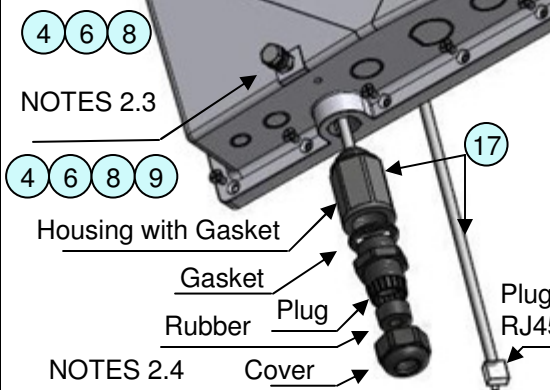
2.4.1. Remove Cover, Rubber, Plug & Gasket from Housing of Ethernet System item 17 when holding Housing with wrench.

2.4.2. Transmit cable thru all the parts specified in point 2.4.1 & in the same sequence. (Put Rubber on cable using the slit.)

2.4.3. Connect RJ45 plug of cable (not shown) to RJ45 jack inside Housing of the Ethernet System.

2.4.4. Screw tightly Plug with Gasket into Housing. Then insert Rubber into tabs of Plug. Hold cable to prevent its torsion & close Cover tightly until it stops.

Part List		
ITEM	QTY	DESCRIPTION
1	1	Enclosure
2	1	Base to Radio
3	9	Plain Washer #6
4	5	Plain Washer #1/4
5	9	Pan Screw UNC 6-32x1/4"
6	5	Hex Head Screw UNC 1/4-20 x 5/8"
7	9	Spring Washer #6
8	5	Spring Washer #1/4
9	1	Nut UNC 1/4-20
10	20	8-32 UNC x 5^16" Flat Head Screw
11	6	Spacer
12	6	Pan Screw UNC 4-40x9/16"
13	6	Nut UNC 4-40
14	12	Plain Washer #4
15	6	Spring Washer #4
16	1	MNT-22-1 (base of MNT-22)
17	1	RJ45 Ethernet conn.system



2.4.3. Connect RJ45 plug of cable (not shown) to RJ45 jack inside Housing of the Ethernet System.

2.4.4. Screw tightly Plug with Gasket into Housing. Then insert Rubber into tabs of Plug. Hold cable to prevent its torsion & close Cover tightly until it stops.

3. Disconnecting of Outer Cable

3.1. Hold Housing of the Ethernet System with wrench. Turn Cover off. Then turn off Plug together with Rubber & Gasket.

3.2. Slide the parts carefully along cable to make free space near Housing.

3.3. Disconnect RJ45 plug of cable from RJ45 jack of the Ethernet System

MK-EL31 Enclosure Mounting Instructions

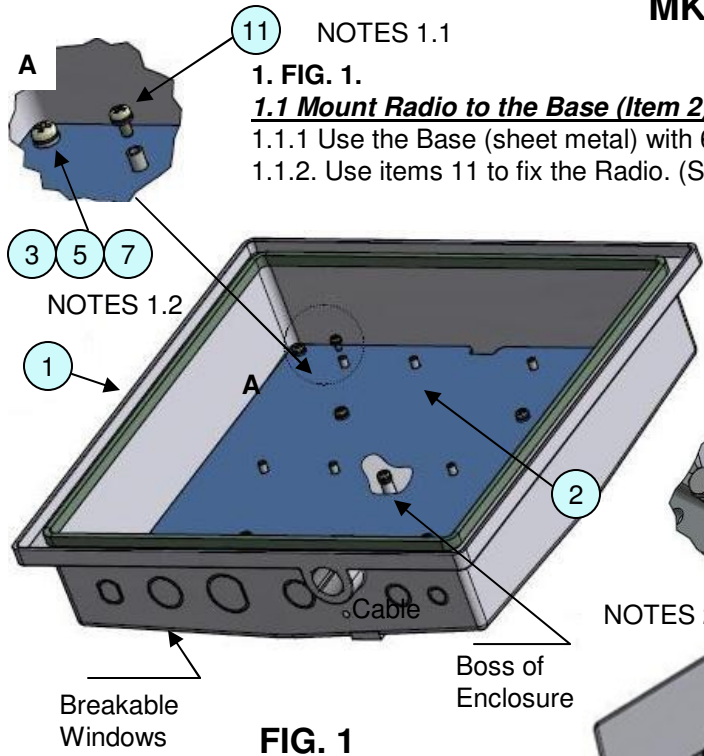


FIG. 1

- 11** NOTES 1.1
1. FIG. 1.
1.1 Mount Radio to the Base (Item 2).
 1.1.1 Use the Base (sheet metal) with 6 PEMs item 2 to mount Radio.
 1.1.2. Use items 11 to fix the Radio. (See detail "A").

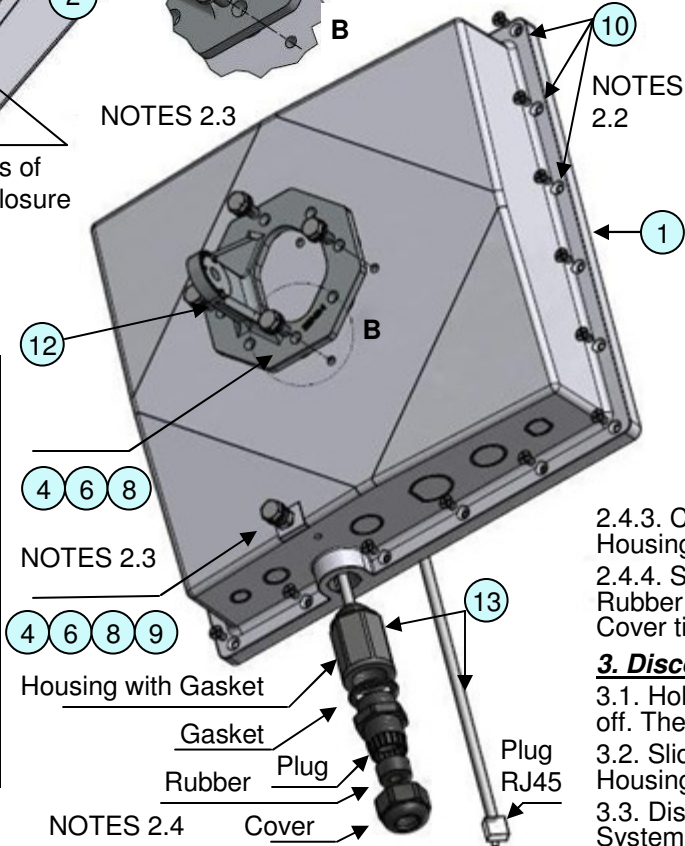
- 1.2 Mount Base for Radio to Enclosure.**
 1.2.1. Align Base for Radio item 2 with 9 inside bosses of the Enclosure item 1 as shown.
 1.2.2. Fasten Base for Radio with items 3, 5, 7 (see detail 'A').



FIG. 2

NOTES 2.3

NOTES 2.2



NOTES 2.3

4 6 8 9

Part List		
ITEM	QTY	DESCRIPTION
1	1	Enclosure
2	1	Base for Radio
3	9	Plain Washer #6
4	5	Plain Washer #1/4
5	9	Pan Screw UNC 6-32x1/4"
6	5	Hex Head Screw UNC 1/4-20 x 5/8"
7	9	Spring Washer #6
8	5	Spring Washer #1/4
9	1	Nut UNC 1/4-20
10	20	8-32 UNC x 5^16" Flat Head Screw
11	6	KIT Small: StSt Philips Pan Head Screw 4-40 UNC x1/4" + 2 Washers
12	1	MNT-22-1 (base of MNT-22)
13	1	RJ45 Ethernet conn.system

FIG. 2.

2.1. Connect RJ45 Ethernet system item 13.

- 2.1.1. Remove Nut (not shown). Don't remove Gasket!
 2.1.2. Pass Cable through Enclosure's hole in order to plug RJ45 inside.
 2.1.3. Screw tightly Housing of Ethernet system with Gasket into Enclosure's hole in order that the Gasket will be pressed to Enclosure surface.
 2.1.4. Connect plug RJ45 to jack RJ45 of Radio (not shown).

2.2. Connect Enclosure (1) to antenna Backplane.

- 2.2.1 Align mounting holes of the Enclosure item 1 with 20 PEM BSOS832-12 of Antenna's Base (not shown). **PAY ATTENTION** Mounting holes of the Enclosure are placed asymmetrically to exclude wrong Enclosure's position.
 2.2.2. Fasten Enclosure to Antenna with 20 Screws item 10. Fix the Screws with locktite (not supplied).

2.3 Connect of MNT-22 item 12.

- 2.3.1. Align holes of MNT-22's base with 4 holes 1/4-20 in the Enclosure item 1.
 2.3.2. Fix MNT-22's base to the Enclosure with items 4, 6, 8.
 2.3.3. Use items 4, 6, 8, 9 for grounding.
 2.3.4. Assembly of MNT-22 - see instruction.

2.4. Connect outer Cable.

- 2.4.1. Remove Cover, Rubber, Plug & Gasket from Housing of Ethernet System item 13 when holding Housing with wrench.
 2.4.2. Transmit cable thru all the parts specified in point 2.4.1 & in the same sequence. (Put Rubber on cable using the slit.)

2.4.3. Connect RJ45 plug of cable (not shown) to RJ45 jack inside Housing of the Ethernet System.

2.4.4. Screw tightly Plug with Gasket into Housing. Then insert Rubber into tabs of Plug. Hold cable to prevent its torsion & close Cover tightly until it stops.

3. Disconnecting of Outer Cable

- 3.1. Hold Housing of the Ethernet System with wrench. Turn Cover off. Then turn off Plug together with Rubber & Gasket.
 3.2. Slide the parts carefully along cable to make free space near Housing.
 3.3. Disconnect RJ45 plug of cable from RJ45 jack of the Ethernet System