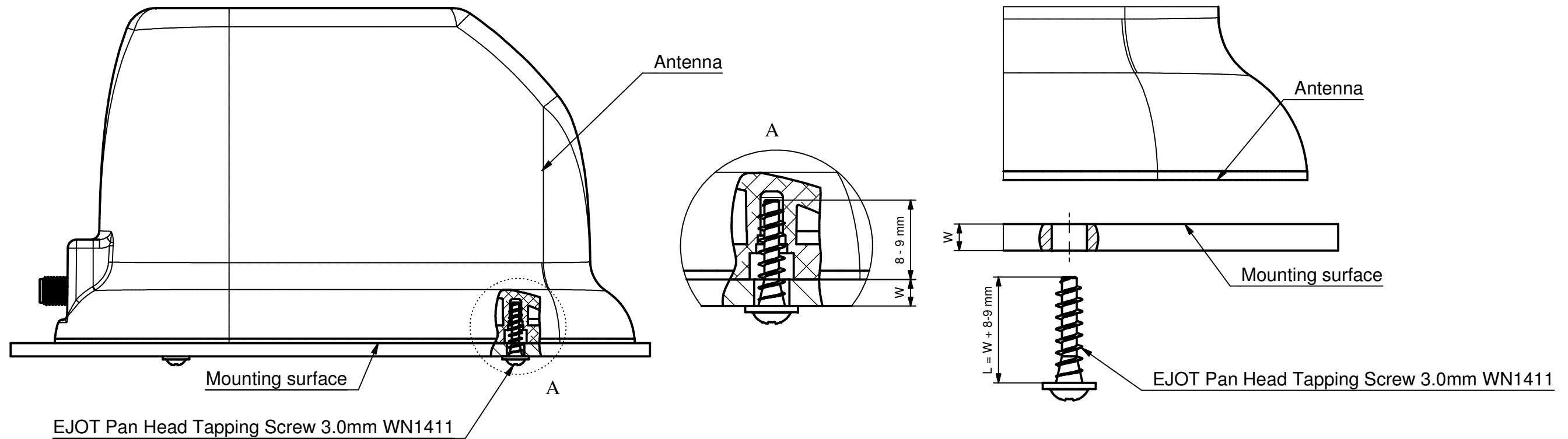
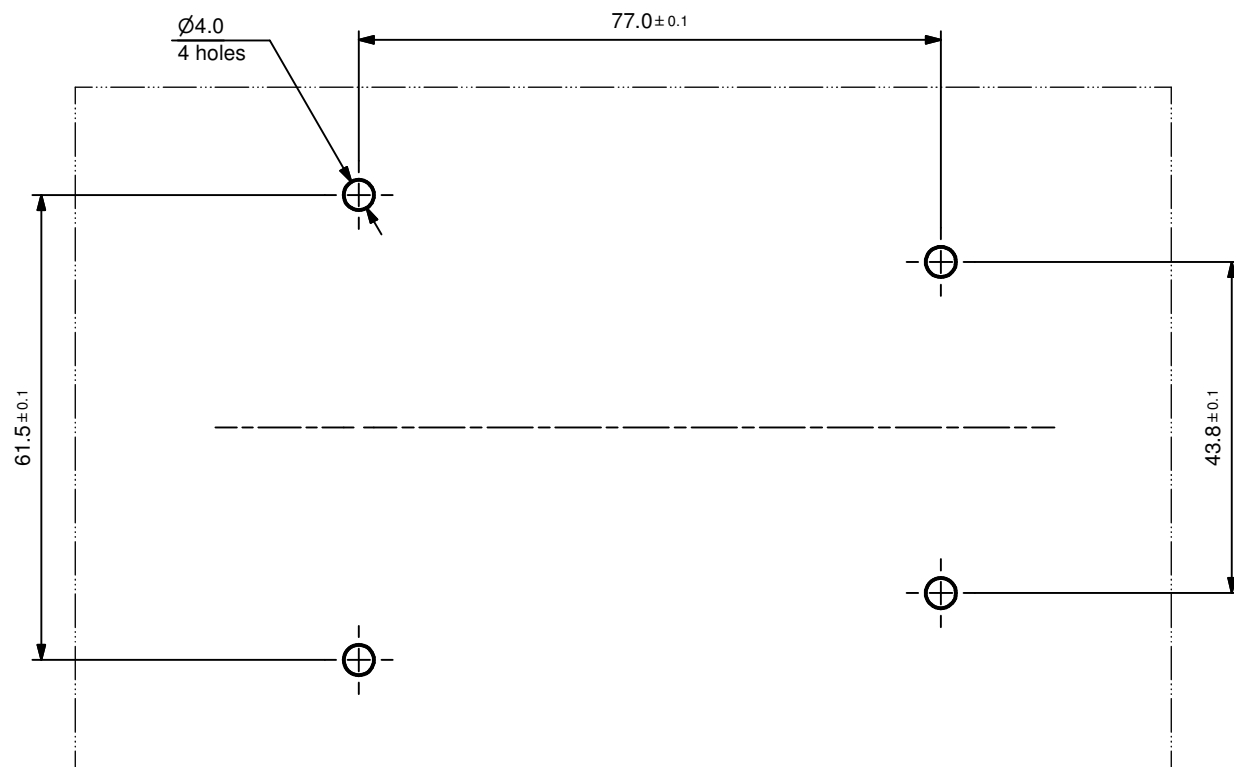


MOUNTING INSTRUCTION

MA-VM1765-5SF



RECOMMENDED DRILLING LAYOUT FOR ANTENNA FIXING (1 : 1)



1. Drill 4 through holes $\text{Ø}4$ mm in the surface where should be installed antenna according dimensions on recommended drilling layout for antenna fixing with using attached drilling template.
2. For fixing antenna should be used EJOT Pan Head Tapping Screw 3.0mm WN1411 (EJOT [Screws for Plastics](http://www.ejot.co.uk/Thermoplastics.odl) <http://www.ejot.co.uk/Thermoplastics.odl>) or equivalent. Using of non-specialized tapping screws for plastic may cause damage to the plastic radome and is not allowed!
Screw length depends on the thickness of the mounting surface and is defined by the formula $L = W + 8...9$ mm, where
L - screw length,
W - thickness of the mounting surface.
(for example: if $W = 3$ mm (thickness of the mounting surface)
screw length will be $L = 3+9 = 12$ mm)
3. Screws tightening moment must be 0.45-0.56 N x m (4.0-5.0 lb x inch). Exceeding these values may cause damage to the plastic radome.