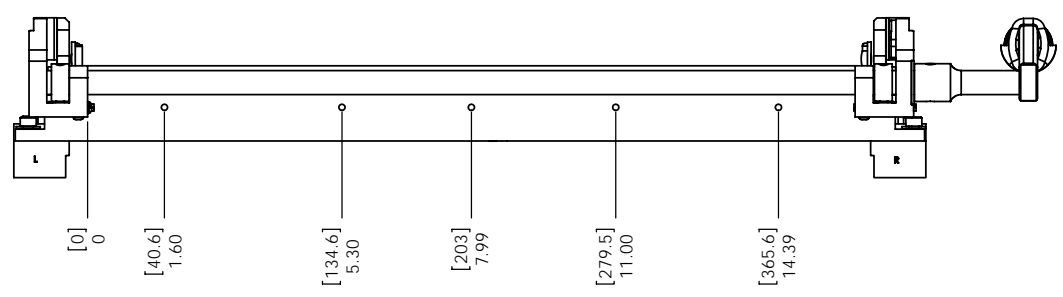
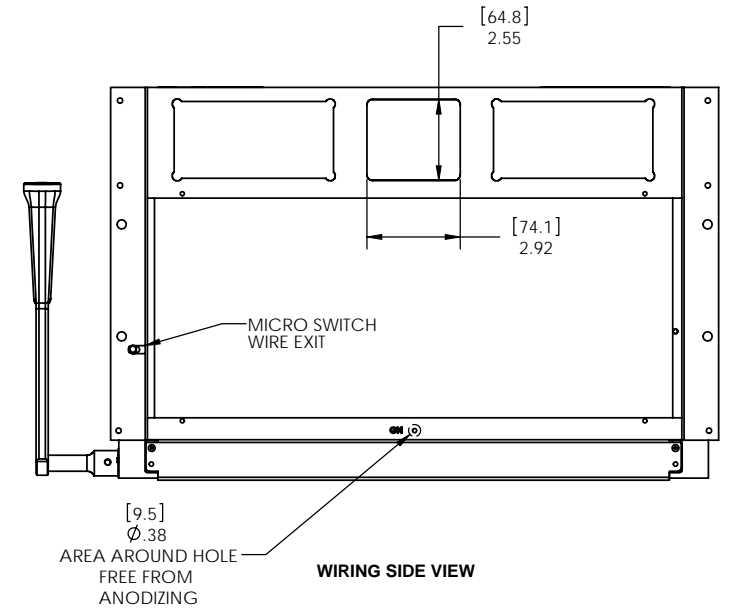
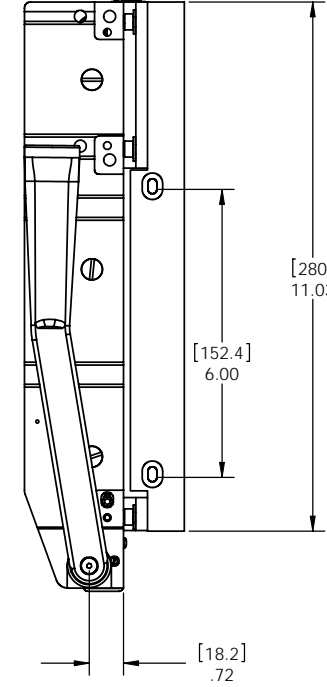
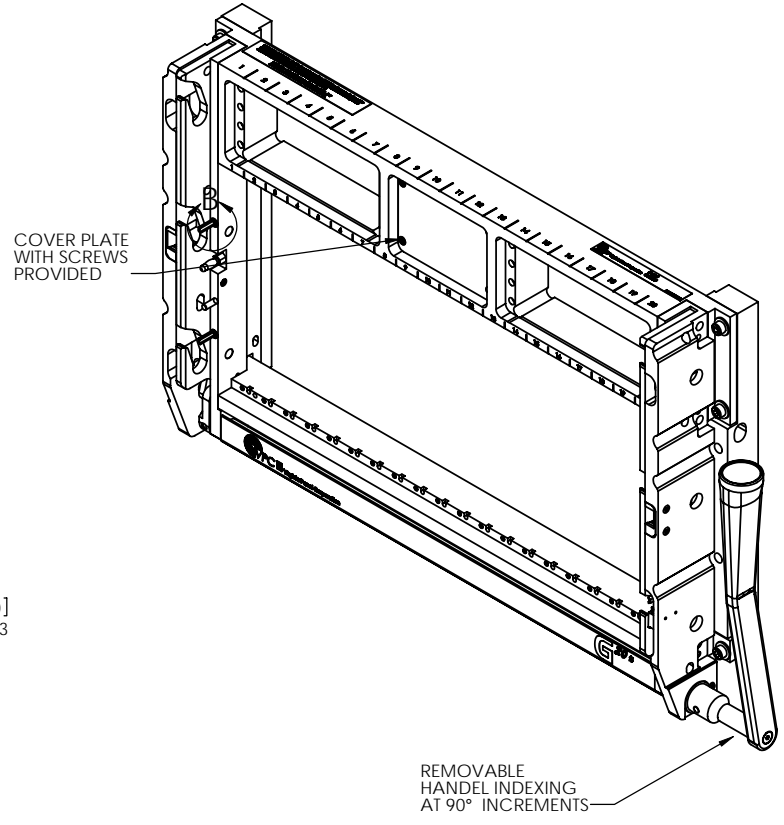
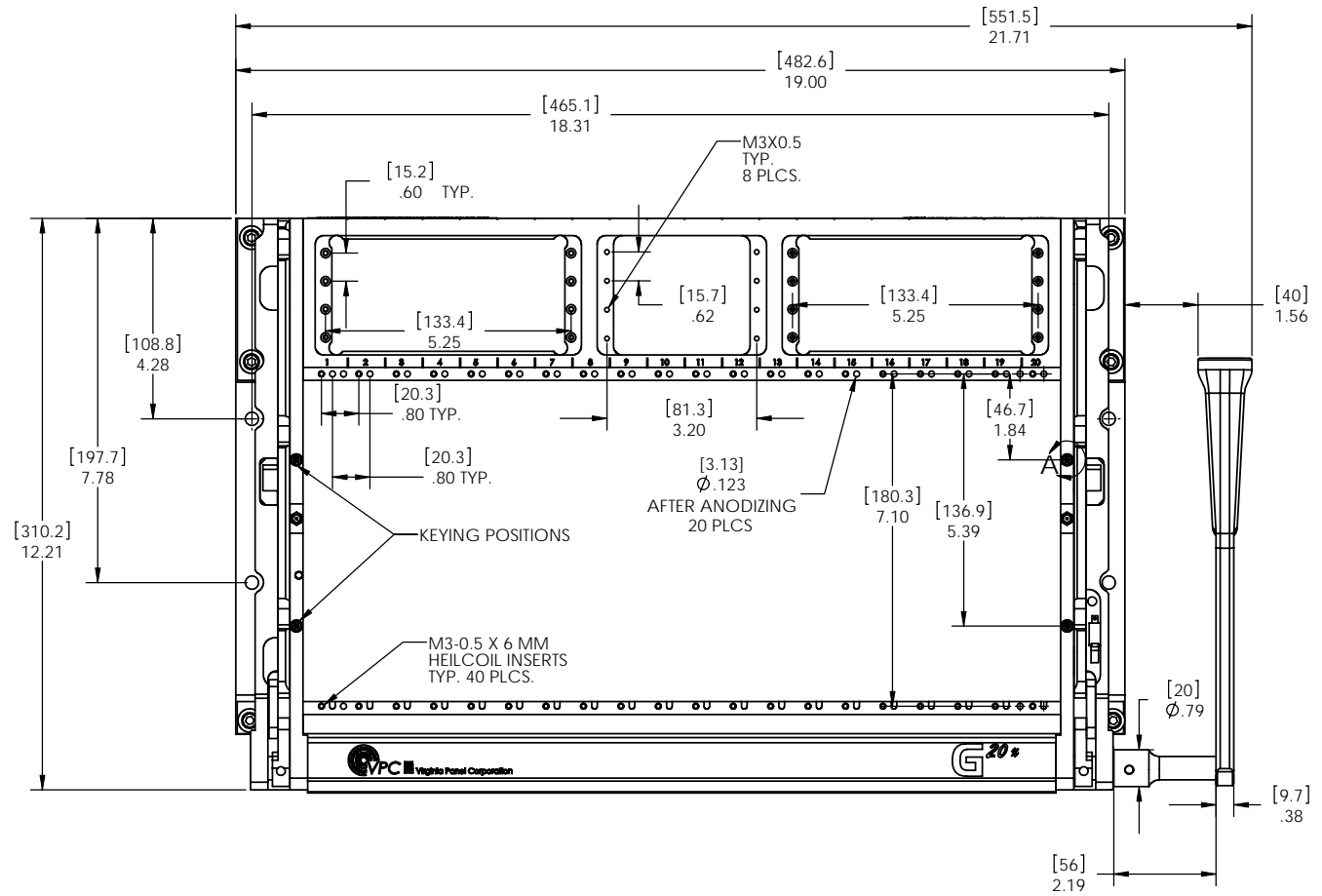
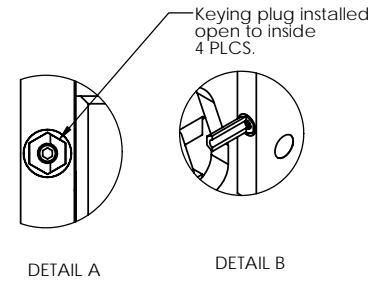
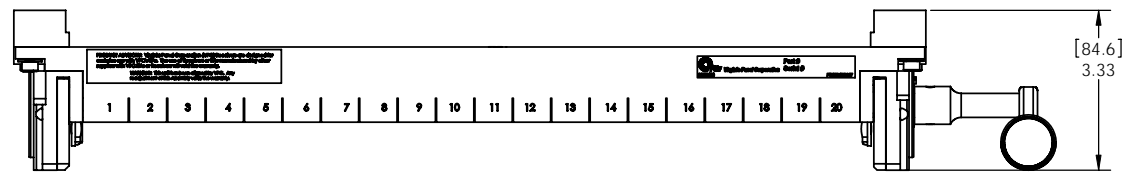


DO NOT SCALE DRAWING

THE INFORMATION CONTAINED HEREIN IS THE EXCLUSIVE PROPERTY OF VIRGINIA PANEL CORPORATION AND IS SUBMITTED FOR USE BY THE CUSTOMER ONLY. THE DATA SHALL NOT BE DUPLICATED, USED OR DISCLOSED IN WHOLE OR IN PART FOR ANY PURPOSE OTHER THAN TO MAINTAIN THE EQUIPMENT PROVIDED. CONSULT WITH VIRGINIA PANEL CORPORATION ENGINEERING IF MORE DETAIL IS REQUIRED.

REVISIONS			
REV	DESCRIPTION	DATE	ENGR
B	ECN# 08-310-0106	10/21/08	D Ashby



BOTTOM VIEW SHOWN WITHOUT TORSION SHFT COVER

SPECIFICATIONS:  
 WEIGHT: 13.5 LBS (6.2KG)  
 CONSTRUCTION:  
 SLIDE MATERIAL: NICKEL PLATED STEEL  
 FRAME MATERIAL: ALUMINUM  
 LINKAGE/HANDLE: STAINLESS STEEL

NOTES:  
 1. FOR APPLICATION USE AND CARE INFORMATION CONSULT VPC USERS GUIDE @ WWW.VPC.COM

**CUSTOMER DRAWING**  
**VIRGINIA PANEL CORPORATION**  
 WWW.VPC.COM  
**RECIEVER 2100 G20X MOD R&S**

DIMENSIONS ARE SHOWN AS:	SIZE	CAGE CODE	DWG. NO.	REV
[MILLIMETERS]	D	18117	310120140	B
[INCHES]	SCALE: 1:2	310120140	6/25/08	SHEET 1 OF 1