

NEW

micro-focus X-RAY MICROSCOPE

7600



Slim Body with Large Capacity

You can test a large-sized specimen from various angles

Multipurpose fluoroscopy with the rotary/tilt stage (option)

It is more likely to find faulty points that can't be found with plane fluoroscopy by rotating and tilting the specimen. Conventional rotary stages can only chuck light-weight objects. 5500 can fix large-sized works and heavy objects.

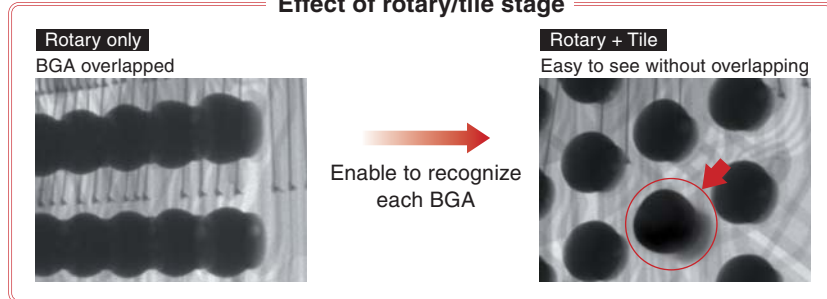


Rotary Stage



Enable to inspect large board

Effect of rotary/tilt stage



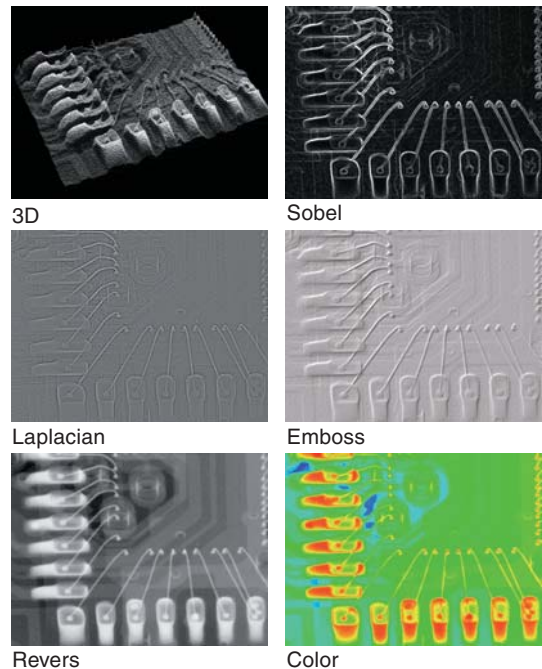
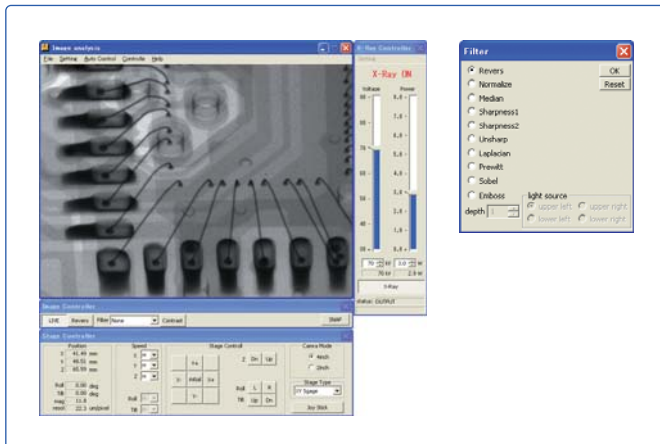
Excellent functions and user usability are concentrated

Image analysis

The brand new image analysis software for our x-ray inspection system can not only control the stage and X-ray easily but also have various image processing and measurement functions.

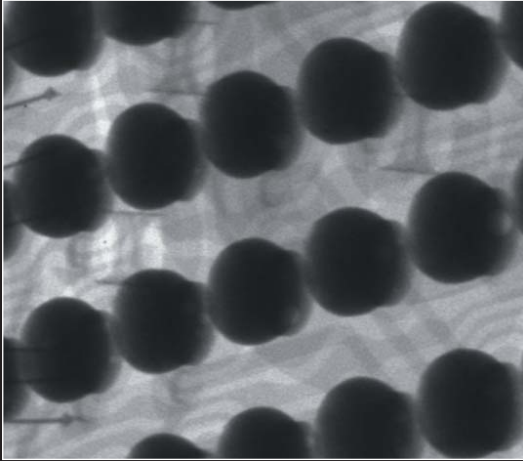
Filtering function

More than 10 types of filter processing and image processing are supported to enable more detailed image analyses. Adapting motion capture display with filter processing allows image analyses in real-time.

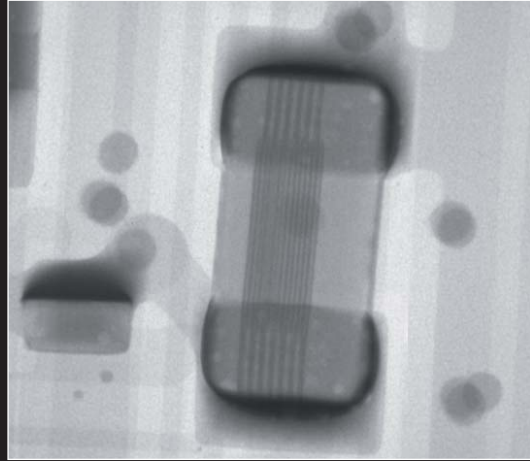


For various applications

Electrical components



BGA



Ceramic capacitor

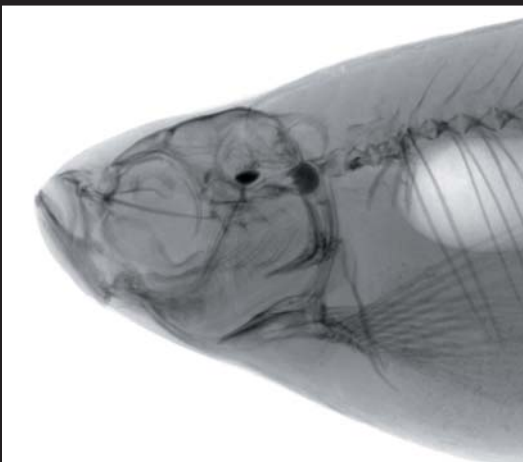


Capacitor



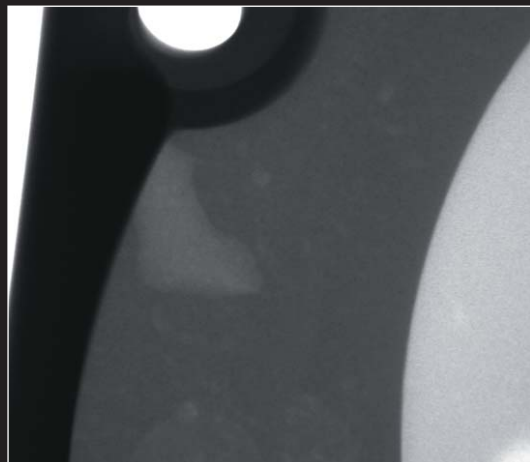
Battery

Biology



Fish

Metal parts



Holes in Aluminum piece

Specifications

X-ray Source	Tube voltage	30kV to 90kV
Imaging Section	Size of visual field	diagonal 6/4" dual
Stage section (XY stage)	Stage <size>	10.2(X)×13.8(Y) inches
	XY stroke	X:10.2", Y:7.1"
Input voltage		115VAC 50/60HZ(less than 1kW)
Dose of x-ray leakage		less than 1μSv/hr



For products > www.matsusada.com/product For contact > www.matsusada.com/contact

San Jose Office : 2570 N.First Street Suite 200 San Jose, CA 95131
Tel: +1-408-273-4573 Fax: +1-408-273-4673
New York Office : 80 Orville Drive Suite 100 Bohemia, NY 11716
Tel: +1-631-244-1407 Fax: +1-631-244-1496

Dallas Office : 5430 LBJ Freeway, Suite 1200 Dallas, TX 75240
Tel: +1-972-663-9336 Fax: +1-972-663-9337
Boston Office : 859 Willard St. One Adams Place, Suite 418 Quincy, MA 02169
Tel: +1-781-353-6407 Fax: +1-781-353-6476

International Office : Osaka-City, Osaka Japan
Tel: +81-6-6150-5088 Fax: +81-6-6150-5089
Headquarters : 745 Aoji-cho Kusatsu Shiga 525-0041 Japan
Tel: +81-77-561-2111 Fax: +81-77-561-2112