

Spot-on operability and sophisticated design !



[RG series] High power · Low profile rack mount

18V to 650V, 30W to 100W **《 GPIB 》** **《 RS-232C 》** **《 RS-485 》** **《 USB 》**

RG series is high-performance regulated DC power supply of series regulator method designed for speedy and accurate operation.

RGE series is low-cost regulated DC power supply with the same operability and performance of RG series, with functions are limited for experiment purpose.

Wide range line-up of 13 models in total from 18V to 650V allows you to choose the best suitable model for your purpose. This is a compact and lightweight power supply that can be widely used for

research and development, aging power supply, system power supply and educational purpose.



Ultra slim · Ultra light !

- Ultra compact desktop model of only 2.75" wide (and up)
- Lightest in the class, about 7.5lb (and up)



High performance !

Ultra low ripple, low noise, high-speed response



Great operability !

Accurate setting by simple operation

LINE UP

Output voltage (V)	Output current (A)	RG series MODEL	RGE series MODEL	Constant voltage mode			Constant current mode			Consumed power (approx.) (VA)	Weight (approx.)	
				Ripple (mVrms)	Line reg. (mV) *1	Load reg. (mV) *2	Ripple (mArms)	Line reg. (mA) *1	Load reg. (mA) *2			
0 to 18	0 to 2	RG-18-2	RGE-18-2	0.5	1	2	1	2	2	10	75	7.5lb(3.4kg)
	0 to 3	RG-18-3	RGE-18-3			3	2		15	100	9.47lb(4.3kg)	
	0 to 4	RG-18-4	RGE-18-4			4	4		20	130	9.47lb(4.3kg)	
	0 to 5	RG-18-5	RGE-18-5			5	4		20	170	13.66lb(6.2kg)	
0 to 36	0 to 1.2	RG-36-1.2	RGE-36-1.2		2	2	1	2	2	10	75	7.5lb(3.4kg)
	0 to 2.2	RG-36-2.2	RGE-36-2.2			4	2		15	130	9.47lb(4.3kg)	
	0 to 3	RG-36-3	RGE-36-3						200	13.66lb(6.2kg)		
0 to 60	0 to 1.2	RG-60-1.2	RGE-60-1.2	1	4	7	7	2	10	130	9.47lb(4.3kg)	
0 to 120	0 to 0.6	RG-120-0.6	RGE-120-0.6		7					160	11.9lb(5.4kg)	
0 to 160	0 to 0.45	RG-160-0.45	RGE-160-0.45	3	10	10	1	1	5	160	11.9lb(5.4kg)	
0 to 250	0 to 0.3	RG-250-0.3	RGE-250-0.3		15	15				170	11.9lb(5.4kg)	
0 to 360	0 to 0.2	RG-360-0.2	RGE-360-0.2	5	25	25	1	1	5	160	11.9lb(5.4kg)	
0 to 650	0 to 0.1	RG-650-0.1	RGE-650-0.1	10	30	30				140	13.22lb(6.0kg)	

*1. For AC $\pm 10\%$ line change. *2. For 0 to 100% load change.

SPECIFICATION

Input voltage	115VAC±10% 50/60Hz 1Ø
Output control	Local: Constant voltage: Front panel 10-turn potentiometer Constant current: Front panel 1-turn potentiometer *1 Remote: Constant voltage: External control voltage 0Vdc to around 10Vdc or external variable resistor 0Ω to around 10kΩ Constant current: External control voltage 0Vdc to around 10Vdc or external variable resistor 0Ω to around 10kΩ
Temperature coefficient	Constant voltage 100ppm/°C TYP Constant current 200ppm/°C TYP
Output display	Output voltage: 3-digit digital meter, accuracy ±(0.5%rdg+1digit) below 60V models: 99.9V fixed, over 120V models: 999V fixed Output current: 3-digit digital meter, accuracy ±(1%rdg+2digit) below 60V models: 9.99A fixed, over 120V models: 999mA fixed
Function	<ul style="list-style-type: none"> Remote sensing *1 Remote switch ON/OFF (external relay) *1 Series operation (within earth-termination voltage) One-control parallel operation (operable only with same model) Parallel operation
Constant voltage transient response	50μ sec TYP
Operation *2 conditions	0°C to 40°C, 10% to 85%RH (no condensation)
Earth-termination voltage	Below 60V models: ±250V-DC (positive or negative terminal can be grounded) Models 120V to 360V: ±500V-DC (positive or negative terminal can be grounded) 650V model: ±650V-DC (positive or negative terminal can be grounded)
Accessories	Instruction manual (1)

*1 : Only for RG series

*2 : When placing in a rack, keep 4 inches space above and bottom of power supply or apply forced air cooling

OPTION

-L(120V), -L(200V), -L(220V), -L(240V)

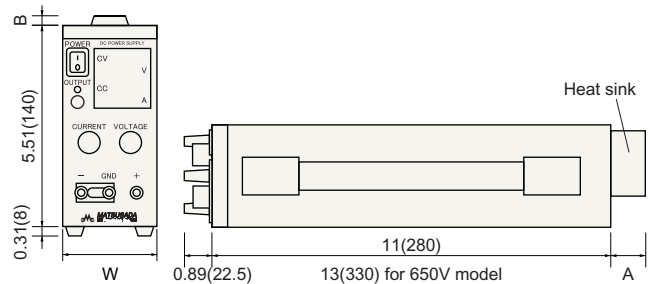
-L3Pi AC1Ø input cable 3 pin type

Add above L mark to the model number when ordering
{e.g} RG-60-1.2-L(220V) alphabetical, numerical order

*Input range is ±10% for all.

※ Rack mount adapter for 19"rack is available

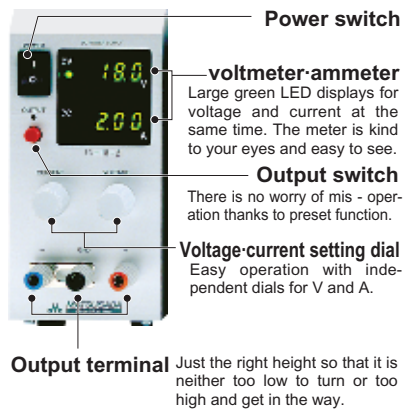
DIMENSIONS inch(mm)



Output	W	A	B
18V/2A, 36V/1.2A	2.75(70)	0.95(24)	-
other models	4.13(105)		
18V/5A, 36V/3A	5.31(135)	2.12(54)	0.31(8)

FUNCTION

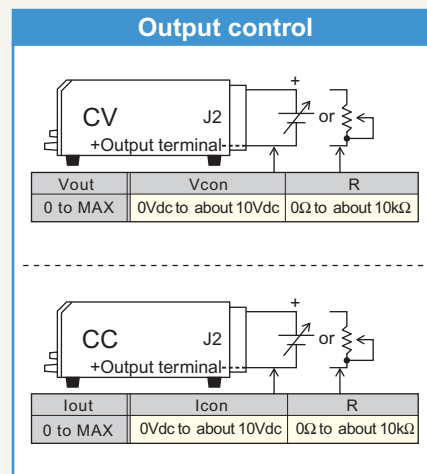
<Front panel>



RG series has earned good reputations for its design for "togetherness" of user. Not only visibility of meter, thickness of output terminal-output setting knob and location but also responsiveness of output setting is designed to perfection.

Output responds well to the sense of person who turns the knob so that it is not too sensitive or too slow.

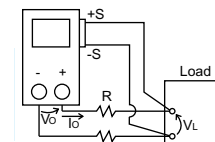
Remote control connector J2 Only for RG series (RGE has no these functions)



Remote switch ON/OFF		
Output relay	Relay	open collector
OFF	SHORT	V _{CE} less than 0.4V
ON	OPEN	V _{CE} more than 2V
Sink current 1mA		

Remote sensing

Prevents deterioration of stability by voltage drop (VO-VL) or contact resistance caused by resistance (R) of output wire (up to maximum of 0.5V)



* Common of external control and output is still connected even when AC power supply is turned off. Please be careful when using external control.