

## POWER INDUCTORS FOR DIGITAL AMPLIFIER 数字功放电感

## HPID0910B 系列

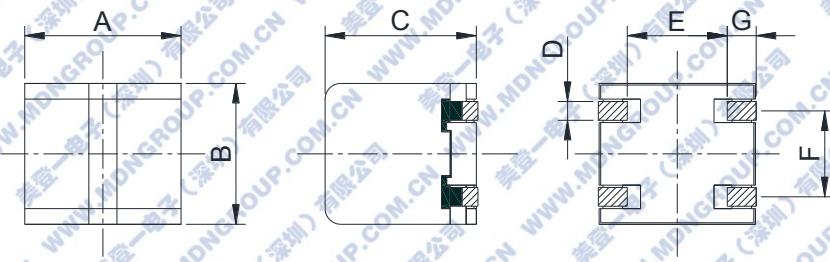
## FEATURES

- Compact size using flat wire, SMD type.
- Low radiation noise by magnetically shielded construction.
- Super high current, Low resistance.
- The optimal design realizes high quality sound and low distortion.
- Space reduction is realized by 2 in 1 construction.

## APPLICATIONS

- Suitable as choke for digital amp. Car audio, LCD and PDP TV, 5.1ch Home theater, etc.

## DIMENSIONS (mm) AND SHAPES



TYPE	A ±0.8	B ±0.8	C max	D ref	E ref	F ref	G ref
HPID0910B-	10.0	9.0	10.0	1.2	6.2	5.5	1.9

## ELECTRICAL CHARACTERISTICS

TYPE	Inductance (uH) ± 25%	DC resistance (mΩ) max	DC saturation allowable current (A) max	Temperature rise allowable current (A) max
HPID0910B-8R2	8.8	17.0 (14.0)	6.5	4.8
HPID0910B-100	10	20.0 (15.5)	6.0	4.5
HPID0910B-120	12	22.0 (16.7)	5.5	4.0
HPID0910B-150	15	30.0 (23.0)	5.0	3.0
HPID0910B-220	22	32.0 (24.5)	4.0	2.5

## 特 征

- 扁平线小尺寸，贴片类型；
- 闭磁路封装，低辐射；
- 超大的额定电流，低直流电阻；
- 高品质低失真的最佳设计；
- 二合一的结构缩小空间。

## 用 途

- 适用于数字功放扼流。如汽车音响，LCD 电视和 PDP 电视，5.1 声道家庭影院等。

## POWER INDUCTORS FOR DIGITAL AMPLIFIER 数字功放电感

## HPFD0910B 系列

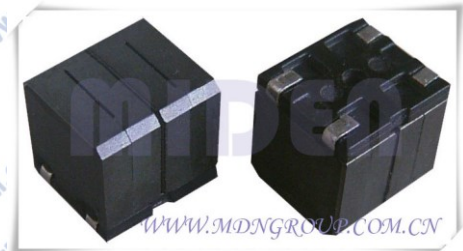
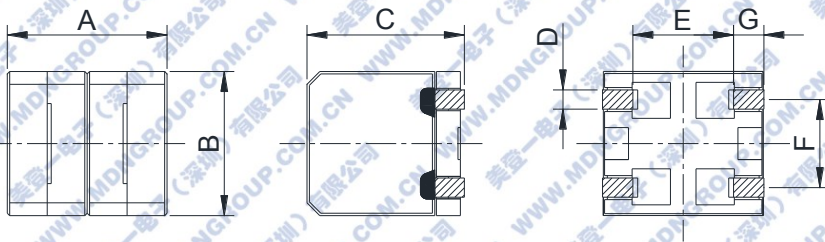
## FEATURES

- Compact size using flat wire, SMD type.
- Low radiation noise by magnetically shielded construction.
- Super high current, Low resistance.
- The optimal design realizes high quality sound and low distortion.
- Space reduction is realized by 2 in 1 construction.

## APPLICATIONS

- Suitable as choke for digital amp. Car audio, LCD and PDP TV, 5.1ch Home theater, etc.

## DIMENSIONS (mm) AND SHAPES



## 特 征

- 扁平线小尺寸，贴片类型；
- 闭磁路封装，低辐射；
- 超大的额定电流，低直流电阻；
- 高音质低失真的最佳设计；
- 二合一的结构缩小空间。

## 用 途

- 适用于数字功放扼流。如汽车音响，LCD 电视和 PDP 电视，5.1 声道家庭影院等。

TYPE	A $\pm$ 0.8	B $\pm$ 0.8	C max	D ref	E ref	F ref	G ref
HPFD0910B-	10.0	9.0	10.0	1.2	6.2	5.5	1.9

## ELECTRICAL CHARACTERISTICS

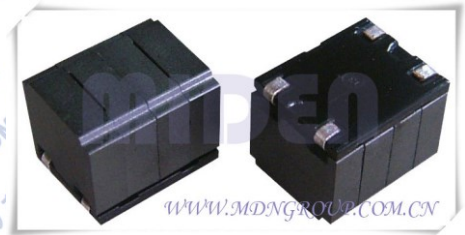
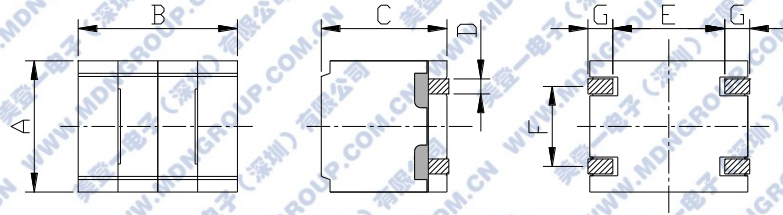
TYPE	Inductance (uH) $\pm$ 25%	DC resistance (m $\Omega$ ) max	DC saturation allowable current (A) max	Temperature rise allowable current (A) max
HPFD0910B-8R2	8.8	17.0 (14.0)	6.5	4.8
HPFD0910B-100	10	20.0 (15.5)	6.0	4.5
HPFD0910B-120	12	22.0 (16.7)	5.5	4.0
HPFD0910B-150	15	30.0 (23.0)	5.0	3.0
HPFD0910B-220	22	32.0 (24.5)	4.0	2.5

**POWER INDUCTORS FOR DIGITAL AMPLIFIER 数字功放电感****HPFD1010B 系列****FEATURES**

- Compact size using flat wire, SMD type.
- Low radiation noise by magnetically shielded construction.
- Super high current, Low resistance.
- The optimal design realizes high quality sound and low distortion.
- Space reduction is realized by 2 in 1 construction.

**APPLICATIONS**

- Suitable as choke for digital amp. Car audio, LCD and PDP TV, 5.1ch Home theater, etc.

**DIMENSIONS (mm) AND SHAPES**

TYPE	A ± 0.5	B ± 0.8	C max	D ref	E ref	F ref	G ref
HPFD1010B/C-	10.5	12.8	10.5	1.2	9.0	6.4	1.9

**ELECTRICAL CHARACTERISTICS**

TYPE	Inductance (uH) ± 25%	DC resistance (m Ω) max	DC saturation allowable current (A) max	Temperature rise allowable current (A) max
HPFD1010C-100	10	25	8.5	3.7
HPFD1010B-100	10	18	7.1	4.2
HPFD1010B-120	12	20	6.0	4.0
HPFD1010B-150	15	23	5.3	3.8
HPFD1010B-220	22	38	4.3	3.5

**特 征**

- 扁平线小尺寸，贴片类型；
- 闭磁路封装，低辐射；
- 超大的额定电流，低直流电阻；
- 高品质低失真的最佳设计；
- 二合一的结构缩小空间。

**用 途**

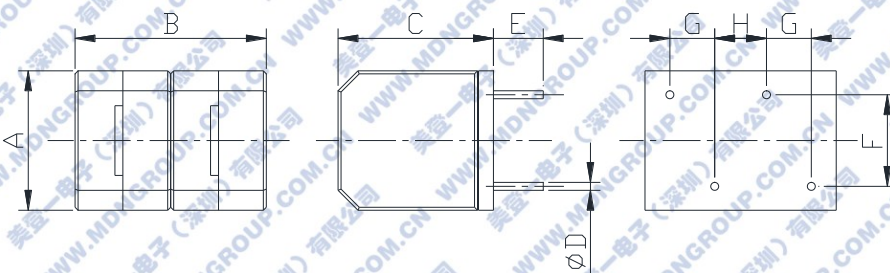
- 适用于数字功放扼流。如汽车音响，LCD 电视和 PDP 电视，5.1 声道家庭影院等。

**POWER INDUCTORS FOR DIGITAL AMPLIFIER 数字功放电感****HPFD1416A 系列****FEATURES**

- Low radiation noise by magnetically shielded construction.
- Super high current, Low resistance.
- The optimal design realizes high quality sound and low distortion.
- Space reduction is realized by 2 in 1 construction.

**APPLICATIONS**

- Suitable as choke for digital amp. Car audio, LCD and PDP TV, 5.1ch Home theater, etc.

**DIMENSIONS (mm) AND SHAPES****特 征**

- 闭磁路封装，低辐射；
- 超大的额定电流，低直流电阻；
- 高品质低失真的最佳设计；
- 二合一的结构缩小空间。

**用 途**

- 适用于数字功放扼流。如汽车音响，LCD 电视和 PDP 电视，5.1 声道家庭影院等。

TYPE	A±0.5	B±0.8	C max	D ref	E±1.0	F±0.5	G±0.5	H±0.5
HPFD1416A-100	14.0	19.5	16.0	0.80	5.0	8.5	4.5	5.2
HPFD1416A-150	14.0	19.5	16.0	0.80	5.0	8.5	4.5	5.2
HPFD1416A-220	14.0	19.5	16.0	0.70	5.0	8.5	4.5	5.2
HPFD1416A-330	14.0	19.5	16.0	0.65	5.0	8.5	4.5	5.2

**ELECTRICAL CHARACTERISTICS**

TYPE	Inductance (uH) ±20%	DC resistance (mΩ) max	DC saturation allowable current (A) max	Temperature rise allowable current (A) max
HPFD1416A-100	10	15.0	11.5	7.0
HPFD1416A-150	15	18.0	10.0	6.0
HPFD1416A-220	22	20.0	8.0	5.5
HPFD1416A-330	33	28.0	5.5	5.0

## POWER INDUCTORS FOR DIGITAL AMPLIFIER 数字功放电感

## HPFD1416B 系列

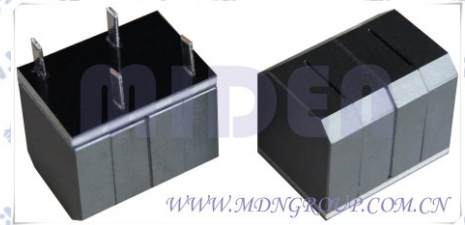
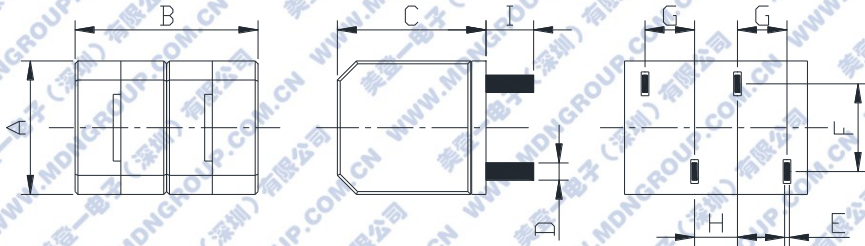
## FEATURES

- Low radiation noise by magnetically shielded construction.
- Super high current, Low resistance.
- The optimal design realizes high quality sound and low distortion.
- Space reduction is realized by 2 in 1 construction.

## APPLICATIONS

- Suitable as choke for digital amp. Car audio, LCD and PDP TV, 5.1ch Home theater, etc.

## DIMENSIONS (mm) AND SHAPES



## 特 征

- 闭磁路封装，低辐射；
- 超大的额定电流，低直流电阻；
- 高品质低失真的最佳设计；
- 二合一的结构缩小空间。

## 用 途

- 适用于数字功放扼流。如汽车音响，LCD 电视和 PDP 电视，5.1 声道家庭影院等。

TYPE	A $\pm$ 0.5	B $\pm$ 0.8	C max	D $\pm$ 0.2	E $\pm$ 0.1	F $\pm$ 0.5	G $\pm$ 0.5	H $\pm$ 1.0	I $\pm$ 0.5
HPFD1416B-100	14.0	19.5	16.0	1.80	0.50	9.2	5.2	4.5	5.0
HPFD1416B-150	14.0	19.5	16.0	1.80	0.50	9.2	5.2	4.5	5.0
HPFD1416B-220	14.0	19.5	16.0	1.80	0.40	9.2	5.2	4.5	5.0
HPFD1416B-330	14.0	19.5	16.0	1.80	0.35	9.2	5.2	4.5	5.0

## ELECTRICAL CHARACTERISTICS

TYPE	Inductance ( $\mu$ H) $\pm$ 20%	DC resistance (m $\Omega$ )max	DC saturation allowable current (A)max	Temperature rise allowable current (A)max
HPFD1416A-100	10	15.0	11.5	7.0
HPFD1416A-150	15	18.0	10.0	6.0
HPFD1416A-220	22	20.0	8.0	5.5
HPFD1416A-330	33	28.0	5.5	5.0

## POWER INDUCTORS FOR DIGITAL AMPLIFIER 数字功放电感

## HPFD1516A 系列

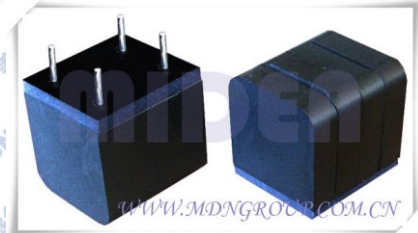
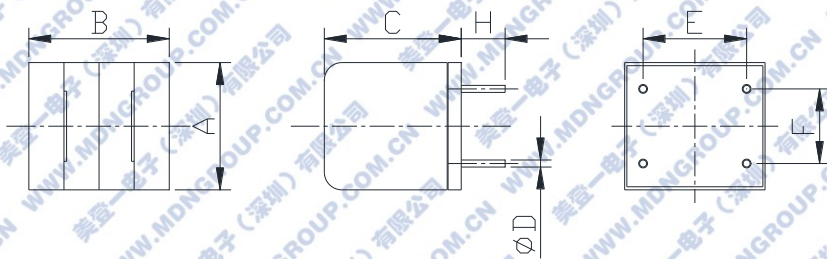
## FEATURES

- Low radiation noise by magnetically shielded construction.
- Super high current, Low resistance.
- The optimal design realizes high quality sound and low distortion.
- Space reduction is realized by 2 in 1 construction.

## APPLICATIONS

- Suitable as choke for digital amp. Car audio, LCD and PDP TV, 5.1ch Home theater, etc.

## DIMENSIONS (mm) AND SHAPES



TYPE	A±0.5	B±0.8	C max	D±0.1	E±0.5	F±0.5	G±0.5	H±1.0
HPFD1516A-	14.5	15.5	16.0	-	10.2	8.5	-	5.0

## ELECTRICAL CHARACTERISTICS

TYPE	Inductance (uH) ±20%	DC resistance (mΩ) max	DC saturation allowable current (A) max	Temperature rise allowable current (A) max	Dimension D(mm)
HPFD1516A-100	10	11.0	11.0	7.0	0.8
HPFD1516A-150	15	16.5	8.4	5.4	0.7
HPFD1516A-220	22	18.0	6.2	5.1	0.7
HPFD1516A-330	33	22.0	5.5	4.5	0.6

## 特 征

- 闭磁路封装，低辐射；
- 超大的额定电流，低直流电阻；
- 高音质低失真的最佳设计；
- 二合一的结构缩小空间。

## 用 途

- 适用于数字功放扼流。如汽车音响，LCD 电视和 PDP 电视，5.1 声道家庭影院等。

## POWER INDUCTORS FOR DIGITAL AMPLIFIER 数字功放电感

## HPFD1516B 系列

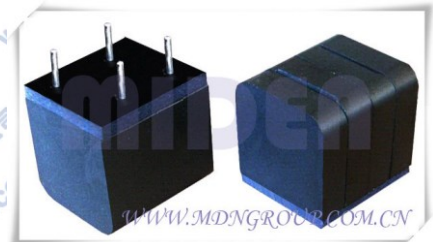
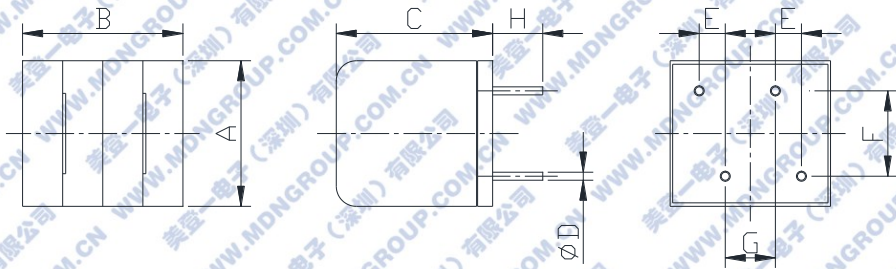
## FEATURES

- Low radiation noise by magnetically shielded construction.
- Super high current, Low resistance.
- The optimal design realizes high quality sound and low distortion.
- Space reduction is realized by 2 in 1 construction.

## APPLICATIONS

- Suitable as choke for digital amp. Car audio, LCD and PDP TV, 5.1ch Home theater, etc.

## DIMENSIONS (mm) AND SHAPES



TYPE	A±0.5	B±0.8	C Max	D±0.1	E±0.5	F±0.5	G±0.5	H±1.0
HPFD1516B-	14.5	15.5	16.0	-	2.6	8.5	5.0	5.0

## ELECTRICAL CHARACTERISTICS

TYPE	Inductance (uH)±20%	DC resistance (mΩ) max	DC saturation allowable current (A)max	Temperature rise allowable current (A)max	Dimension D(mm)
HPFD1516B-100	10	11.0	11.0	7.0	0.8
HPFD1516B-150	15	16.5	8.4	5.4	0.7
HPFD1516B-220	22	18.0	6.2	5.1	0.7
HPFD1516B-330	33	22.0	5.5	4.5	0.6

## 特 征

- 闭磁路封装，低辐射；
- 超大的额定电流，低直流电阻；
- 高音质低失真的最佳设计；
- 二合一的结构缩小空间。

## 用 途

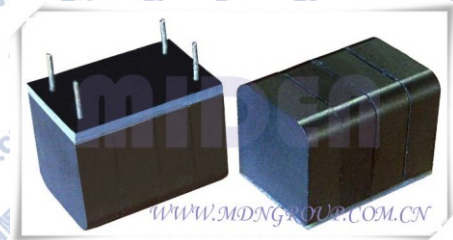
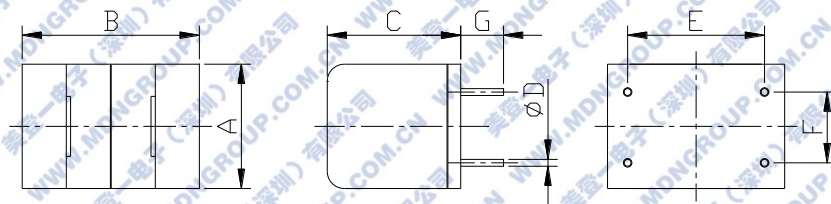
- 适用于数字功放扼流。如汽车音响，LCD 电视和 PDP 电视，5.1 声道家庭影院等。

**POWER INDUCTORS IOR DIGITAL AMPLIFIER 数字功放电感****HPFD1521A 系列****FEATURES**

- Low radiation noise by magnetically shielded construction.
- Super high current, Low resistance.
- The optimal design realizes high quality sound and low distortion.
- Space reduction is realized by 2 in 1 construction.

**APPLICATIONS**

- Suitable as choke for digital amp. Car audio, LCD and PDP TV, 5.1ch Home theater, etc.

**DIMENSIONS (mm) AND SHAPES****特 征**

- 闭磁路封装，低辐射；
- 超大的额定电流，低直流电阻；
- 高音质低失真的最佳设计；
- 二合一的结构缩小空间。

**用 途**

- 适用于数字功放扼流。如汽车音响，LCD 电视和 PDP 电视，5.1 声道家庭影院等。

TYPE	A±0.5	B Max	C Max	D±0.1	E±0.5	I±0.5	G±1.0
HPFD1521A-100	14.5	21.5	16.0	0.90	16.5	8.5	5.0
HPFD1521A-150	14.5	21.5	16.0	0.80	16.5	8.5	5.0
HPFD1521A-220	14.5	21.5	16.0	0.70	16.5	8.5	5.0
HPFD1521A-330	14.5	21.5	16.0	0.70	16.5	8.5	5.0

**ELECTRICAL CHARACTERISTICS**

TYPE	Inductance (uH) ±20%	DC resistance (mΩ) max	DC saturation allowable current (A) max	Temperature rise allowable current (A) max
HPFD1521A-100	10	11.0	14.0	7.7
HPFD1521A-150	15	16.0	12.5	6.4
HPFD1521A-220	22	26.0	10.0	5.5
HPFD1521A-330	33	33.0	8.5	5.0