

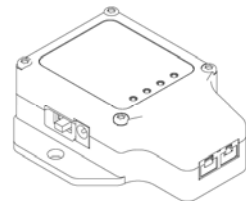
## Quick Start Guide

TC-Link®-mXRS® 1 Channel  
Wireless Thermocouple Node

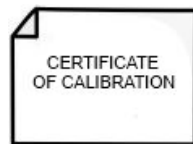


Questions or problems during setup? Go to [www.microstrain.com/support](http://www.microstrain.com/support) or call Technical Support: 1.800.449.3878 or 1.802.862.6629

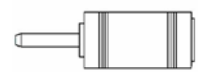
### 1 WHAT YOU NEED



P/N 6310-4000  
TC-Link®-1CH-mXRS®



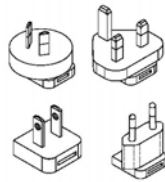
CERTIFICATE  
OF CALIBRATION



P/N 9008-0134  
Connector, DC adapter, 1.3mm-2.1mm



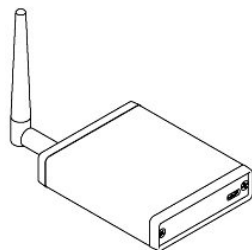
P/N 9011-0009  
Power Supply, 100-240VAC, 9V, SA



P/N 9011-0022  
Power Supply Adapter Kit



J,K,R,S,T,E,B or N type  
Thermocouple with Type 1  
Standard Mini (SM)  
Flat-pin Connectors



P/N 6307-1040  
WSDA-BASE-104



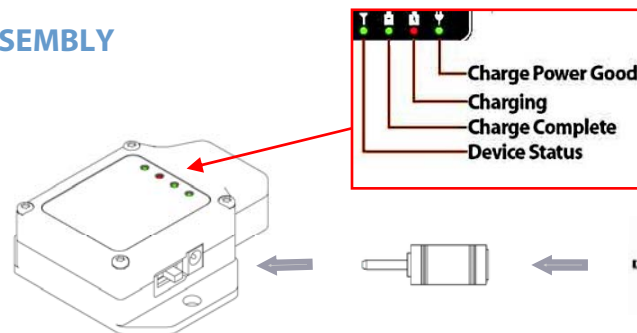
P/N 9022-0029  
USB Cable



P/N 8200-0013  
CD, Node Commander Software

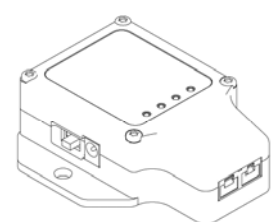
### 2a ASSEMBLE AND CONNECT

#### NODE ASSEMBLY



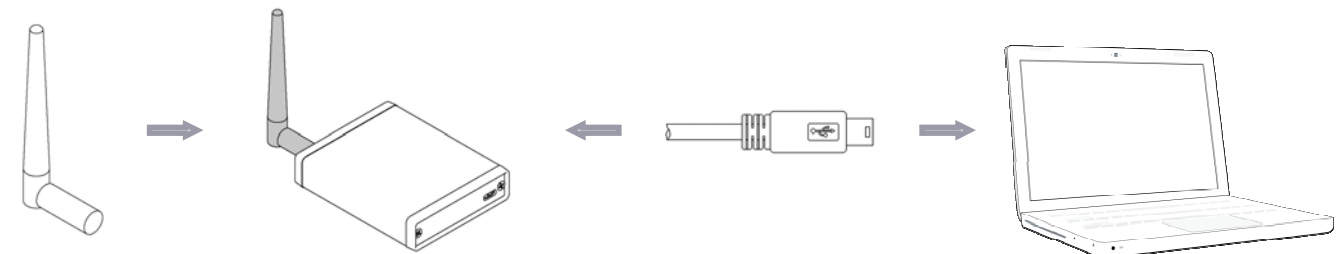
**POWER OFF** the TC-Link®-1CH-mXRS®  
and charge for 3-4 hours before using

- While charging, both green and red LEDs are lit; if only green LED lit, unplug/re-plug
- When charge complete, red LED turns off and battery charged LED turns green
- Device Status LED flashes rapidly to indicate a successful boot-up. LED 'pulsing'

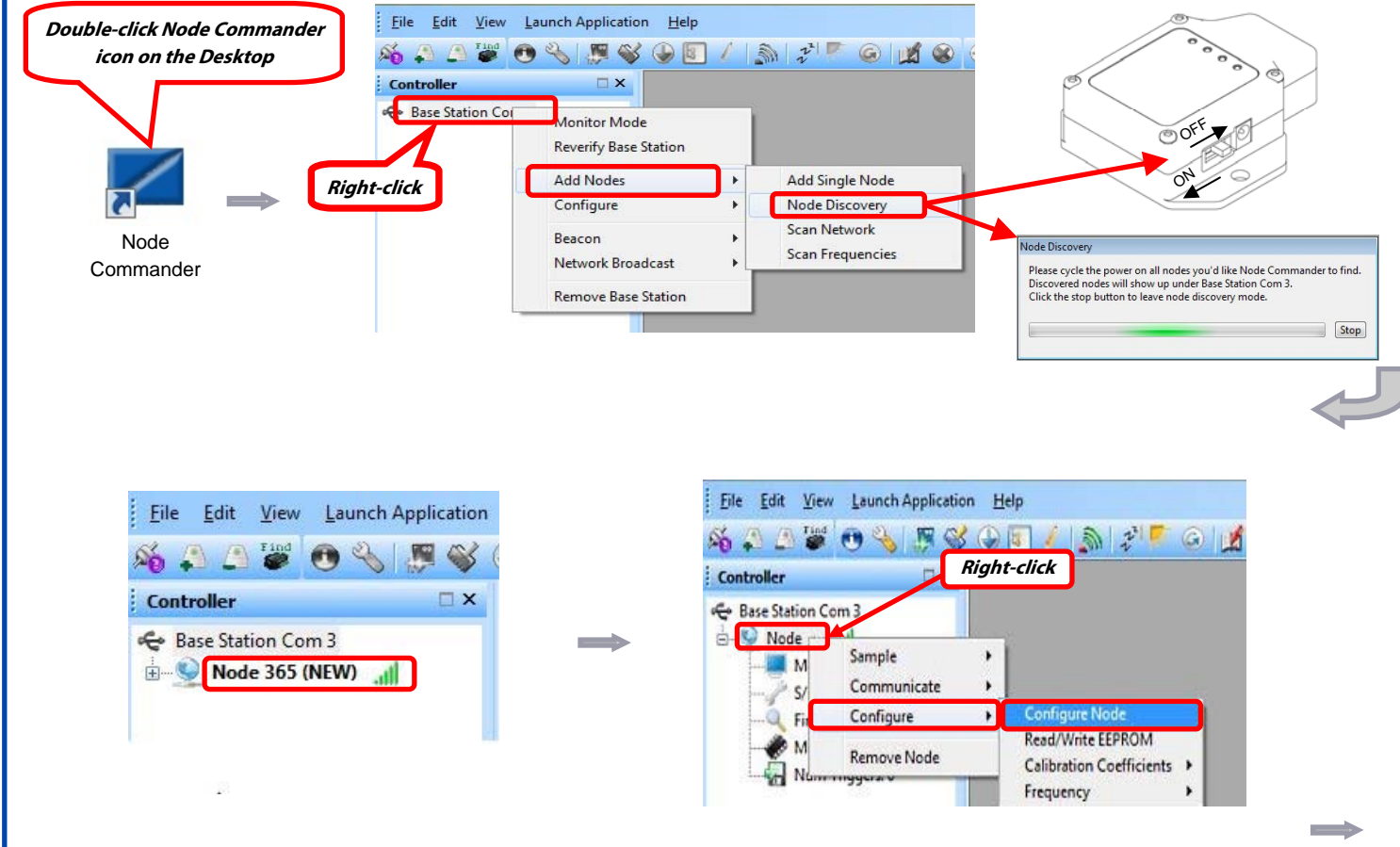


### 2b ASSEMBLE AND CONNECT

#### BASE UNIT ASSEMBLY



### 3a INSTALL AND CONFIGURE



### 3b INSTALL AND CONFIGURE

**1. Select measurement**

**2. Select channel**

**3. Select units:**  
 • If Temperature, choose °C, °F, °K or Other  
 • If Voltage, choose mV, µV, V or Other

**4. Select units for Cold Junction Compensation Temperature: Choose °C, °F, °K or**

**5. Only use for optional Relative Humidity sensor**

**6. Select thermocouple type: K, J, R, S, T, E, B or N**

**7. Select measurement range for resolution control (Narrow, Standard or Wide)**

**8. ADC Filter Settling Time tied to sampling rate; default usually correct**

**9. Select Action:**  
 • Log Only uses least power (NOTE: LOGGING STOPS WHEN MEMORY FULL)  
 • Transmit Only uses moderate power  
 • Log and Transmit uses most power

**10. Choose Sample Rate**

**11. Choose Number of sweeps or Unlimited Sample Duration**

**12. Choose preferred boot mode:**  
 • Normal Boot Mode  
 • Low Duty Cycle on Startup  
 • Synchronized Sampling on Startup  
 • Sleep on Startup

**13. Transmit Power Level:**  
 • Extended Range uses most power  
 • Standard Range uses moderate power  
 • Low Power Mode uses least

### 4a ACQUIRE DATA

**REMOVE POWER ADAPTER!**  
 Do not acquire data while node is plugged into AC power as this will introduce noise to the data signal

**Right-click**

**Synchronized Sampling**

**1. Note data file location**

**2. Limit file size here - note free space available**

**3. Click "Apply Network Configuration"; Click "Start Sampling"**

Nodes	Type	Active Channels	Sampling Mode	Sample Rate	Sweeps	% of Bandwidth	Status
Node 365	TC-Link 1CH-mXRS	1	Continuous	1 Hz	Unlimited	0.782 %	In Network

CSV Location: C:\ProgramData\MicroStrain\NodeCommander\Data

Limit Master File Size (stops network): 1 MB Free Space: 356.61 GB

Apply Network Configuration Start Sampling Close

### 4b ACQUIRE DATA

**Click red x to stop acquiring data**

**Adjust X-Axis width to zoom in on data**

**Note file name and location**

**Toggle between Graph and Data**

**Status alerts**

### 5 VIEW STORED DATA

**File** Edit View Launch Application Help

**Explore Data Directory**

Name	Date modified	Type
Sampled Data	4/17/2012 11:51 AM	File folder
Streaming	4/16/2012 3:53 PM	File folder

Name	Date modified	Type	Size
Node_310 04-16-2012 T19_42_09	4/16/2012 3:42 PM	Microsoft Excel C...	486 KB
Node_310 04-16-2012 T19_43_24	4/16/2012 3:44 PM	Microsoft Excel C...	942 KB
Node_310 04-16-2012 T19_44_48	4/16/2012 3:45 PM	Microsoft Excel C...	474 KB

### CONTACT MICROSTRAIN, INC.

TC-Link® -mXRS® 1 Channel Wireless Thermocouple Node  
 See <http://www.microstrain.com/wireless/tc-link-1ch> for more information.

MicroStrain, Inc.  
 459 Hurricane Lane, Suite 102  
 Williston, VT 05495 USA  
 Phone: 1.802.862.6629  
 Fax: 1.802.863.4093  
 Web: [www.microstrain.com](http://www.microstrain.com)