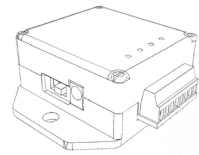


Quick Start RTD-Link™-LXRS® Wireless RTD Sensor Node



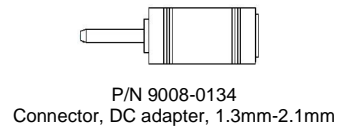
1 WHAT YOU NEED



P/N 6326-0000
RTD-Link™-LXRS®



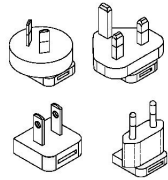
CERTIFICATE
OF CALIBRATION



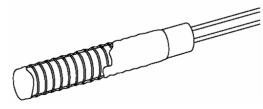
P/N 9008-0134
Connector, DC adapter, 1.3mm-2.1mm



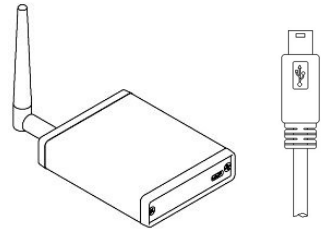
P/N 9011-0009
Power Supply, 100-240VAC, 9V



P/N 9011-0022
Power Supply Adapter Kit



RTD
(User supplied)



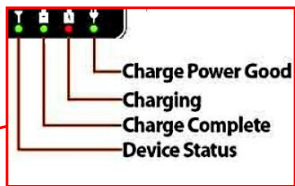
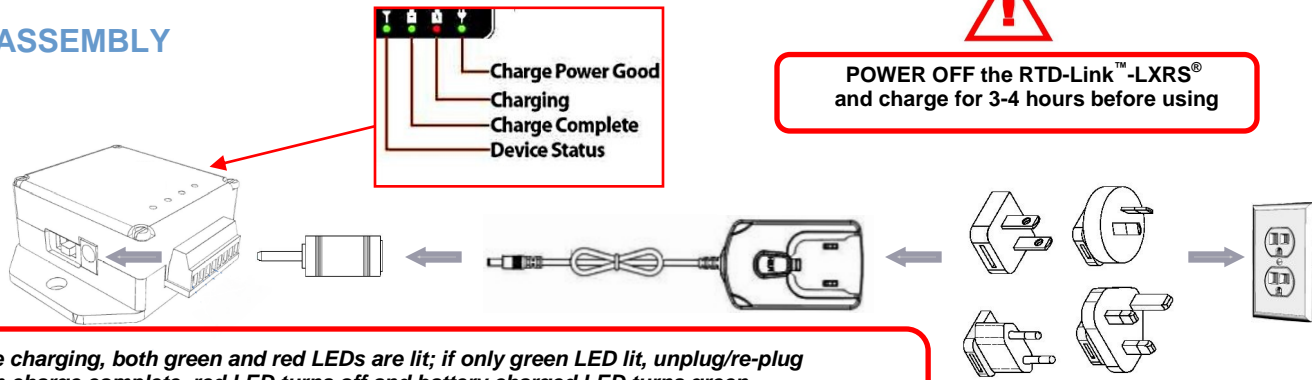
P/N 6307-1040
WSDA-Base-104 & USB Cable



P/N 8200-0013
CD, Node Commander® Software

2a ASSEMBLE AND CONNECT

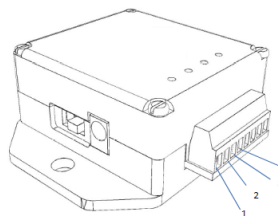
NODE ASSEMBLY



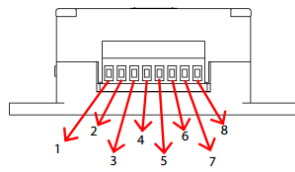
POWER OFF the RTD-Link™-LXRS® and charge for 3-4 hours before using

- While charging, both green and red LEDs are lit; if only green LED lit, unplug/re-plug
- When charge complete, red LED turns off and battery charged LED turns green
- Device Status LED flashes rapidly to indicate a successful boot-up. LED 'pulsing' indicates that the RTD-Link™-LXRS® is active and in an idle state

RTD INSTALLATION



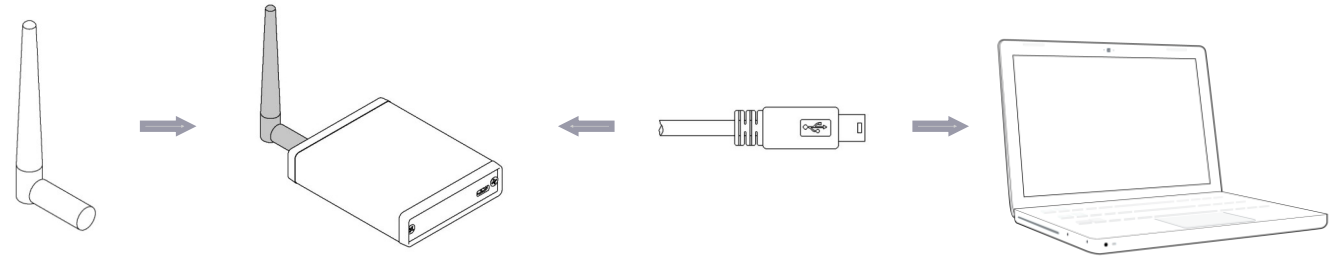
2 wire or 4 wire RTD



Pin Number	Pin Name	Pin Description
1	1	4 wire Sense +
2	2	4 wire Sense -
3	3	4 wire Xit + / 2 wire Xit and Sense +
4	4	4 wire Xit - / 2 wire Xit and Sense -
5		Not used
6		Not used
7	Xit	2.0 volt Xit (active while sampling)
8	GND	System ground

2b ASSEMBLE AND CONNECT

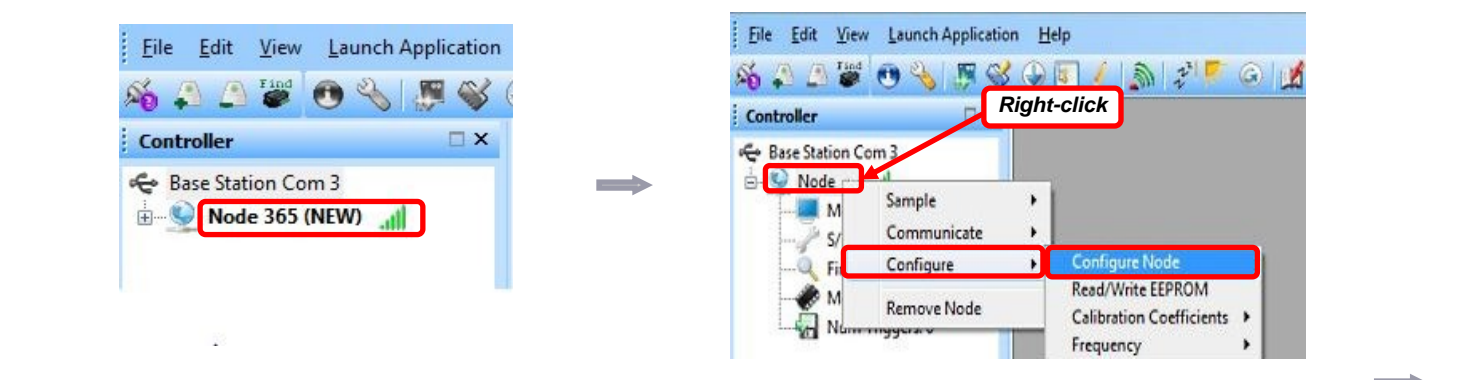
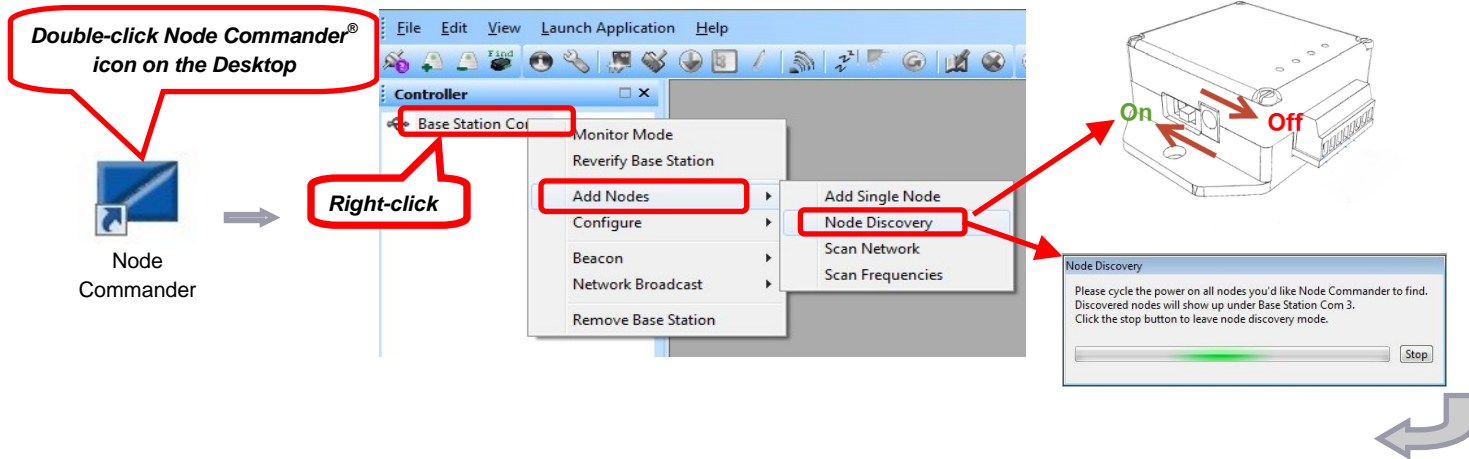
BASE UNIT ASSEMBLY



3a INSTALL AND CONFIGURE



Follow on-screen installation instructions to install Node Commander® software



3b INSTALL AND CONFIGURE

1. Select 2-wire or 4-wire

2. Select °C, °F, °K or Other

3. Select units for Cold Junction Compensation Temperature: Choose °C, °F, °K or Other

4. ADC Filter Settling Time tied to sampling rate; default usually correct

5. Select Action:

- Log Only uses least power (NOTE: LOGGING STOPS WHEN MEMORY FULL)
- Transmit Only uses moderate power
- Log and Transmit uses most power

6. Choose Sample Rate

7. Choose number of Sweeps or Unlimited Sample Duration

8. Choose preferred boot mode:

- Normal Boot Mode
- Low Duty Cycle on Startup
- Synchronized Sampling on Startup
- Sleep on Startup

9. Transmit Power Level:

- Extended Range uses most power
- Standard Range uses moderate power
- Low Power Mode uses least power

4a ACQUIRE DATA

REMOVE POWER ADAPTER !
Do not acquire data while node is plugged into AC power as this will introduce noise to the data signal

Right-click

Synchronized Sampling

1. Note data file location

2. Limit file size here - note free space available

3. Click "Apply Network Configuration"; Click "Start Sampling"

Nodes	Type	Active Channels	Sampling Mode	Sample Rate	Sweeps	% of Bandwidth	Status
Node 365	TC-Link 1CH-mXRS	1	Continuous	1 Hz	Unlimited	0.782 %	In Network

CSV Location: C:\ProgramData\MicroStrain\NodeCommander\Data

Limit Master File Size (stops network): 1 MB Free Space: 356.61 GB

Apply Network Configuration Start Sampling Close

4b ACQUIRE DATA

Click red x to stop acquiring

Adjust X-Axis width to zoom in

Note file name and location

Toggle between Graph and Data

Status alerts

Attempting to open com 3
Opened com 3 successfully
Attempting to write EEPROM 224 on Base Station com 3
Successful EEPROM write on Base Station com 3
Successfully enabled the Beacon on Base Station com 3
Attempting to close com handle 3
Com 3 successfully closed

5 VIEW STORED DATA

File Edit View Launch Application Help

Explore Data Directory

Name	Date modified	Type
Sampled Data	4/17/2012 11:51 AM	File folder
Streaming	4/16/2012 3:53 PM	File folder

Name	Date modified	Type	Size
Node_310 04-16-2012 T19_42_09	4/16/2012 3:42 PM	Microsoft Excel C...	486 KB
Node_310 04-16-2012 T19_43_24	4/16/2012 3:44 PM	Microsoft Excel C...	942 KB
Node_310 04-16-2012 T19_44_48	4/16/2012 3:45 PM	Microsoft Excel C...	474 KB

CONTACT LORD MICROSTRAIN®

RTD-Link™-LXRS® Wireless RTD Sensor Node
See <http://www.microstrain.com/wireless/rtd-link-lxrs> for more information.

LORD MicroStrain®
459 Hurricane Lane, Suite 102
Williston, VT 05495 USA
Phone: 1.802.862.6629
Fax: 1.802.863.4093
Web: www.microstrain.com