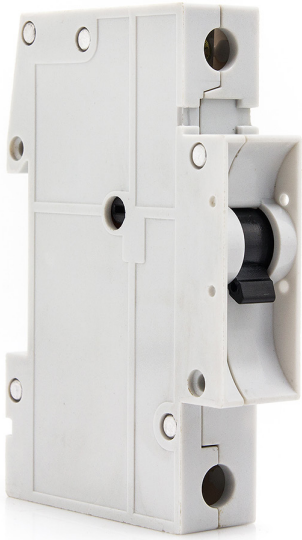


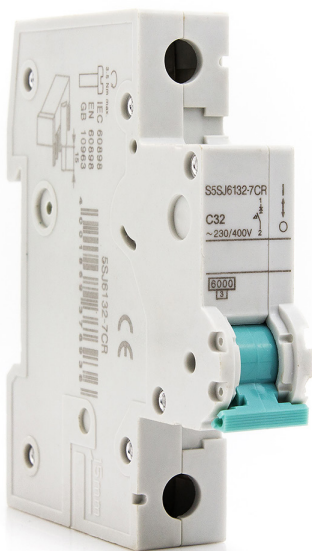
12

S5SX, S5SJ SERIES

MINIATURE CIRCUIT BREAKER



S5SX



S5SJ

- S5SX is very safe from finger touch and touch by the back of the hand
- Its combined terminal allows bus-bar and feeder cable to be simultaneously connected
- Quick mounting is available with snap-on and snap-in mechanism
- Its handle locking device can effectively prevent unauthorized operation
- S5SX is especially suitable for mounting in flat distribution boards for building installations
- Tripping characteristics of A, B, C, D is for options

- S5SJ is mainly applicable in power system of AC50/60Hz, rated voltage up to 230/400V, protecting against overload and short-circuit damage
- Rated currents of 6 amp, 10 amp, 13 amp, 16 amp, 20 amp, 32 amp are for choices
- 1P, 1P+N, 2P, 3P is available for options
- It is designed exclusively for buildings
- S5SJ is produced complying with IEC60898-1