

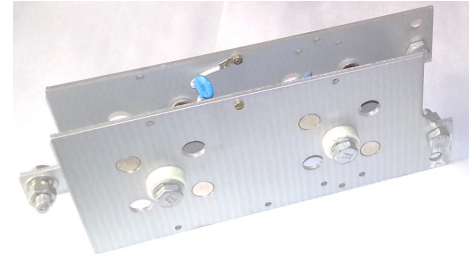
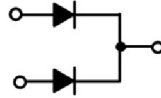
Single phase rectifier stack (with press-fit diodes), 108 Amps

Features

- Compact design
- Low cost
- High efficiency

Applications

- Power supplies
- Welding machines
- Battery chargers

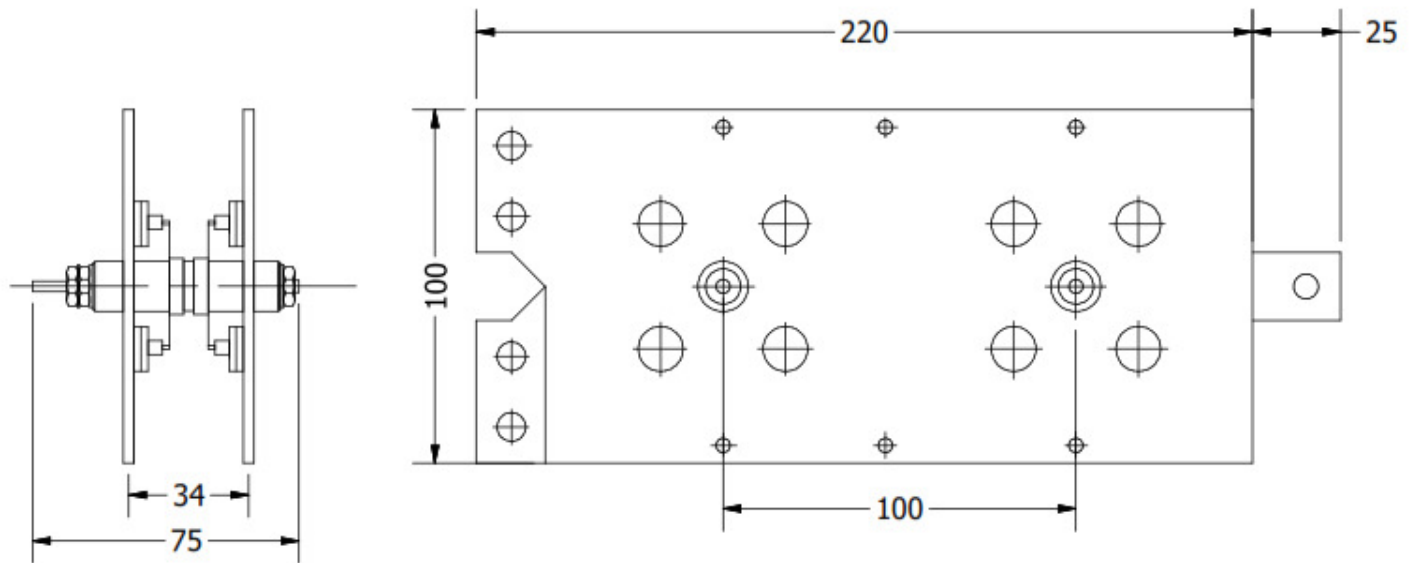


| General Specifications ($T_c = 25^{\circ}\text{C}$, unless otherwise specified) | | | |
|---|----------|-------------------|-------|
| Parameters | Symbol | Values | Units |
| Nominal output voltage | V_{DC} | 80 | V |
| Maximum nominal output current | I_{DC} | 108 | A |
| Number of plates (with M.O.V) | | 2 plates, 200x100 | mm |
| Number of diodes | n | 8 | nos. |

| Semiconductor Specifications ($T_c = 25^{\circ}\text{C}$, unless otherwise specified) | | | |
|---|-------------|--------|------------------------------|
| Parameters | Symbol | Values | Units |
| Repetitive reverse voltage | V_{RRM} | 400 | V |
| Average forward current @ $T_c = 130^{\circ}\text{C}$ | $I_{F(AV)}$ | 35 | A |
| Max. reverse current | I_R | 10.0 | @ $T_J = 25^{\circ}\text{C}$ |
| | | 500 | @ T_{Jmax} |
| Forward surge current @ T_{Jmax} | I_{FSM} | 450 | A |
| On-state maximum voltage @ $T_J = 25^{\circ}\text{C}$, | V_{FM} | 1.2 | V |

| Thermal and Mechanical Specifications ($T_c = 25^{\circ}\text{C}$, unless otherwise specified) | | | |
|--|-----------|--------------|--------------------|
| Parameters | Symbol | Values | Units |
| Maximum operating junction temperature range | T_J | - 40 to +175 | $^{\circ}\text{C}$ |
| Maximum storage temperature range | T_{Stg} | - 40 to +175 | $^{\circ}\text{C}$ |
| Approximate weight | W | 640 | g |

Package Outline



ALL DIMENSIONS IN MM

Ordering Table

| NR | Q/S | 10 | 8 |
|----|-----|----|---|
| 1 | 2 | 3 | 4 |

- 1 – Rectifier Stack
- 2 – Q = Single-Phase
S = Three-Phase
- 3 – Current Rating = I_{DC}
- 4 – Voltage = V_{DC}