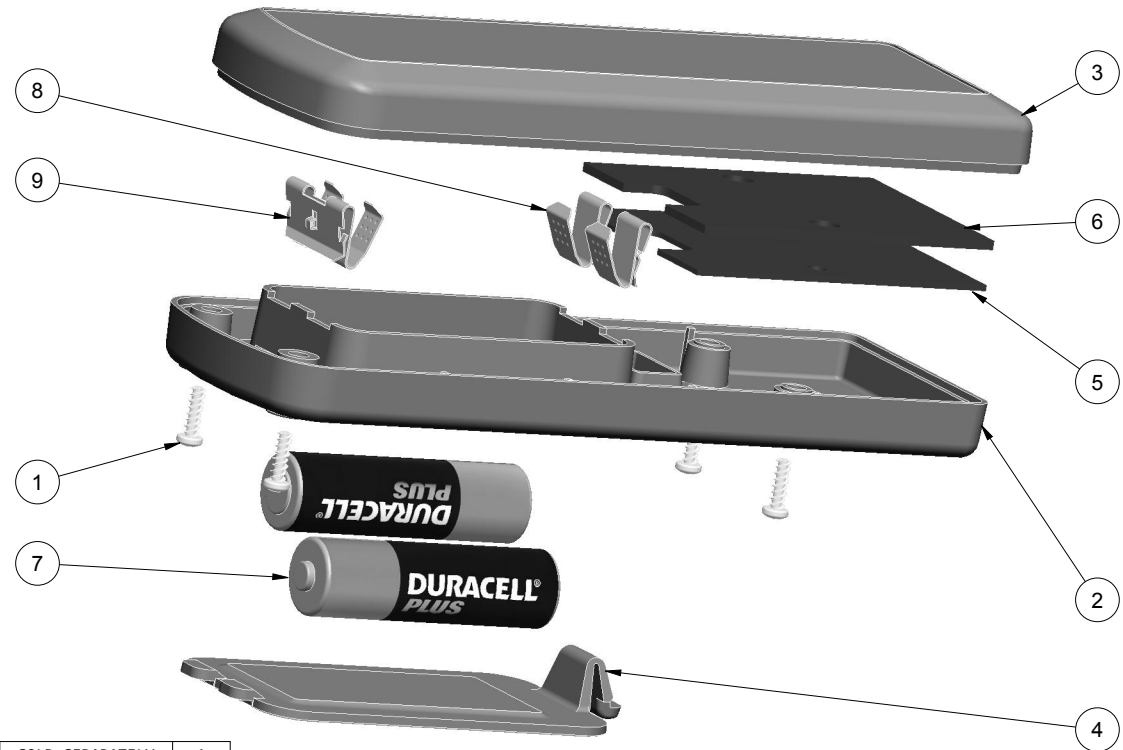


NOTES: UNLESS OTHERWISE SPECIFIED

1. CORNERS DRAWN SHARP TO BE R.005 MAXIMUM.
2. EXTERIOR SURFACE TEXTURE TO BE LIGHT EDM FINISH. EQUIVALENT TO MT-11020. TEXTURE ON ENCLOSURE WILL VARY FROM TIME TO TIME AS THE TOOL WEARS AND IT BECOMES NECESSARY TO REAPPLY.
3. INTERIOR SURFACE TEXTURE TO BE: NONE.
4. ALL INSIDE RADII .010R. UNLESS OTHERWISE SPECIFIED.
5. ALL EXTERNAL DIMENSIONS AFFECTED BY THE DRAFT APPLY AT THE LARGE END OF THE FEATURE, AND ALL INTERNAL FEATURES AFFECTED BY THE DRAFT APPLY AT THE SMALL END OF THE FEATURE UNLESS OTHERWISE SPECIFIED.
6. 1 DEGREE DRAFT IN THE DIRECTION OF PULL IS PERMISSIBLE UNLESS OTHERWISE SPECIFIED.
7. MATERIAL / COLOR: ABS PLASTIC IS STANDARD IN BLACK OR WHITE. CUSTOM MATERIALS AND COLORS ARE AVAILABLE UPON REQUEST FOR QUOTE. ALTERNATE RESINS HAVE DIFFERENT SHRINK RATES, AND WILL EFFECT DIMENSIONS.
8. PCB SIZES ARE RECOMMENDATIONS ONLY. FINAL SIZES AND VERIFICATION OF ITS FIT ARE THE SOLE RESPONSIBILITY OF EACH CUSTOMER.
9. STANDARD OR CUSTOM LABEL RECESSES ARE AVAILABLE FOR QUOTE.
10. FOUR (4) ASSEMBLY SCREWS FOR THE ENCLOSURE INCLUDED.
11. THIS DRAWING IS BASED ON A SOLID MODEL, AND IS FURTHER DEFINED BY THE SOLID MODEL FILE.
12. ALLOWABLE FLASH: 0.010.
13. ALL EJECTOR PIN MARKS TO BE WITHIN 0.010" OF FLUSH, PROTRUDING OR BELOW FLUSH.
14. TRIM GATE WITHIN 0.030" OF FLUSH.
15. THIS ENCLOSURE WILL ACCOMODATE TWO (2) "AA" BATTERIES OR ONE (1) 9 VOLT BATTERY, NOT BOTH. BATTERY RIBS ARE TO BE REMOVED IN ORDER TO ACCOMODATE 9 VOLT BATTERY. CONTACT YOUR SALES REP FOR RIB REMOVAL OPTIONS AND PRICING.
16. THIS ENCLOSURE WILL ACCOMODATE A PCB THICKNESS OF .039" OR .062".

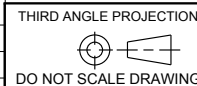
R E V I S I O N					
REV.	DRAWN BY	ECO No	DESCRIPTION	DATE	APPROVED
A	R CRUZ		PRELIMINARY RELEASE	2014-Oct-16	D.C.
B	R CRUZ		MATCH OVERALL SHAPE TO 442710	2014-Oct-21	D.C.
C	R CRUZ		REMOVE EXPANDABLE OPTIONS, USE 4inch SIZE	2015-Feb-18	D.C.
D	R CRUZ		MAKE .039" PCB COMPATIBLE, NARROW WIDTH	2015-Mar-02	D.C.
E	R CRUZ		MOVE BATTERY COMPARTMENT TO COVER, SHORTEN HEIGHT	2015-Mar-05	D.C.
F	R CRUZ		REVISE PART NUMBER AND ENCLOSURE NAME	2015-Mar-16	D.C.
G	R CRUZ		UPDATE NOTES, PCB SIZE, AND LABEL RECESS DEPTH	2015-Jun-29	D.C.
H	M BOYER		COMPLETE REMODEL	2015-Oct-01	D.C.
I	M BOYER		SHARPEN LOWER RADIUS	2015-Oct-23	D.C.
J	R CRUZ		REDUCE NUMBER OF ASSY SCREWS TO 4	2016-May-31	D.C.
K	R CRUZ		REMOVE 9V BATTERY IN MODEL, UPDATE NOTE 15	2016-Jun-09	D.C.
L	R CRUZ		SWITCH BATTERY COMPARTMENT TO CURVED END, UPDATE NOTE 15	2016-Jun-15	D.C.



SCALE 0.750

ITEM	FILE NAME	DESCRIPTION	MATERIAL	COLOR	QTY.
9	ACC-AACLIP-210	"AA" CONTACT, DOUBLE	NICKEL PLATE		1
8	ACC-AACLIP-209	"AA" CONTACT, SINGLE	NICKEL PLATE		2
7	BATTERY-AA	AA BATTERY - REFERENCE	AA SIZE	CUSTOMER SUPPLIED	2
6	582109_PCB-062	582109 .062" PCB - REFERENCE	.062" THICK	CUSTOMER SUPPLIED	1
5	582109_PCB-039	582109 .039" PCB - REFERENCE	.039" THICK	CUSTOMER SUPPLIED	1
4	582109_HATCH	582109 HATCH - STANDARD	ABS	BLACK or WHITE	1
3	582109_COVER	582109 COVER - STANDARD	ABS	BLACK or WHITE	1
2	582109_BASE	582109 BASE - STANDARD	ABS	BLACK or WHITE	1
1	SCREW_HILO-N04X375	#4 HiLo x .375" SCREW	ZINK PLATED	3/8" LONG	4

BILL OF MATERIALS



TOLERANCES: UNLESS OTHERWISE SPECIFIED DIMENSIONS ARE IN U.S. INCHES.  
 X.XX = .015 X.XXXX = .001  
 X.XXX = .010 X.X" = 1"

NEW AGE ENCLOSURES

Customer's Part No: 582109

APPROVAL BY DATE

CHECK ENG.

SCALE AS NOTED

DRAWN BY R CRUZ

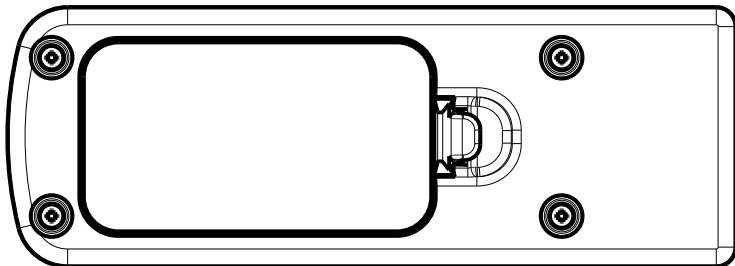
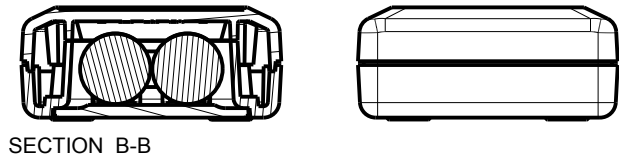
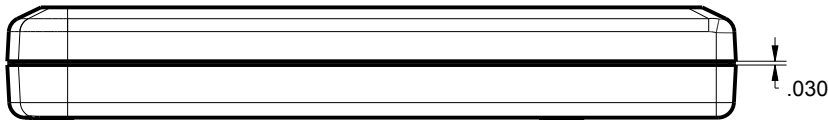
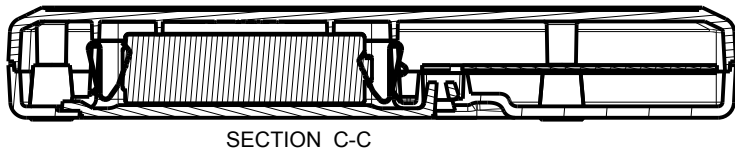
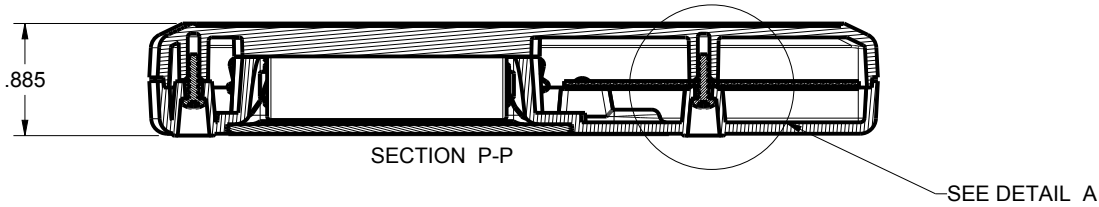
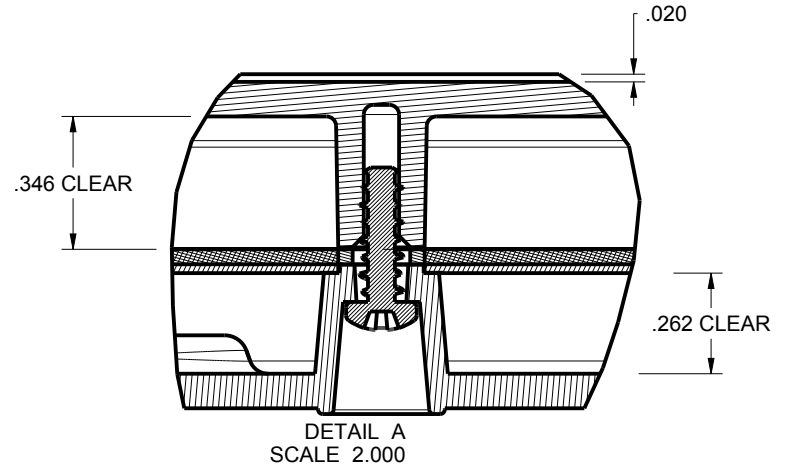
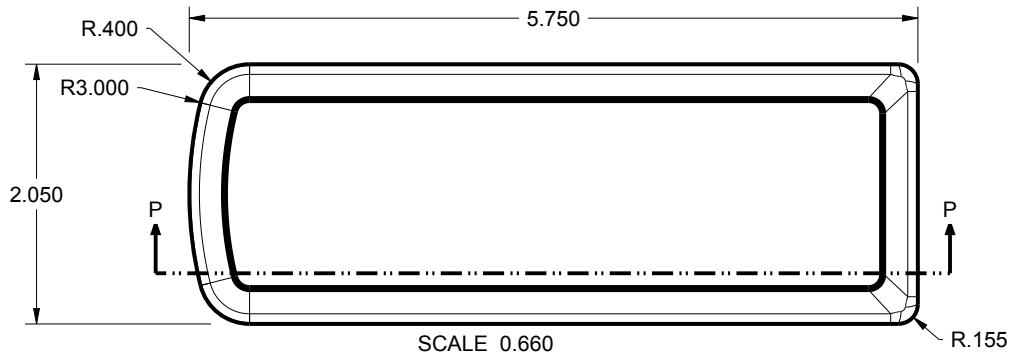
2014-Oct-16

**NEW AGE ENCLOSURES**  
 4330 Santa Fe Road San Luis Obispo, CA. 93401  
 ph. (805) 595-1310 fax (805) 595-1024  
[www.newageenclosures.com](http://www.newageenclosures.com)

**STANDARD - SLIM HANDHELD  
 SXX-582109-XXX**

SIZE A DRAWING NAME 582109\_RL SHEET 1 OF 7 REV.DOC L

582109 ASSEMBLY



TOLERANCES: UNLESS OTHERWISE SPECIFIED  
DIMENSIONS ARE IN U.S. INCHES.  
X.XX = .015 X.XXXX = .001  
X.XXX = .010 X.X° = 1°

NEW AGE ENCLOSURES  
Customer's Part No: 582109

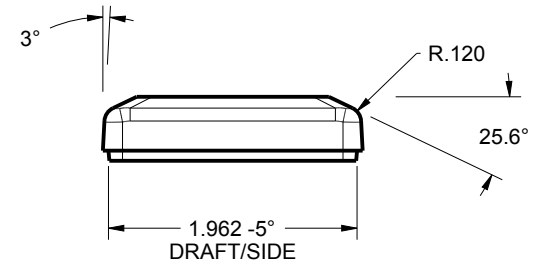
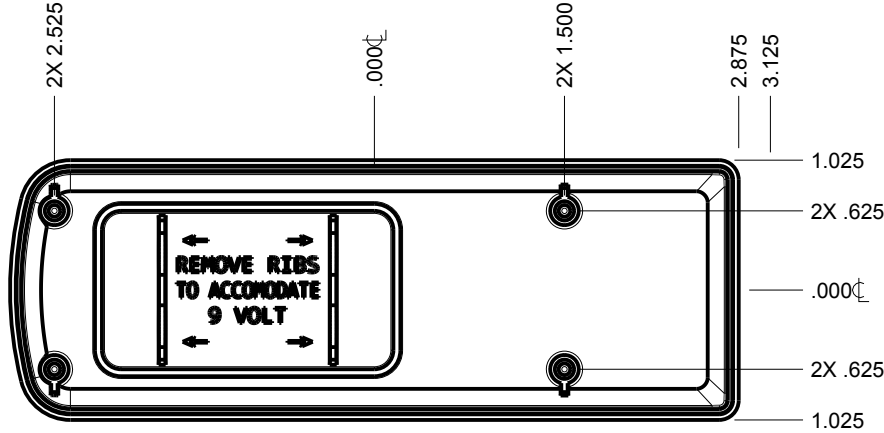
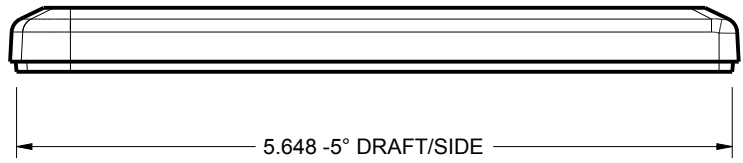
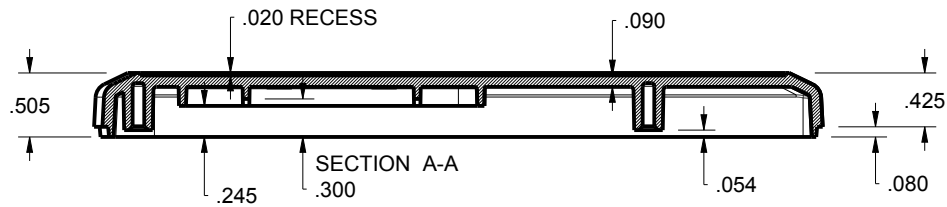
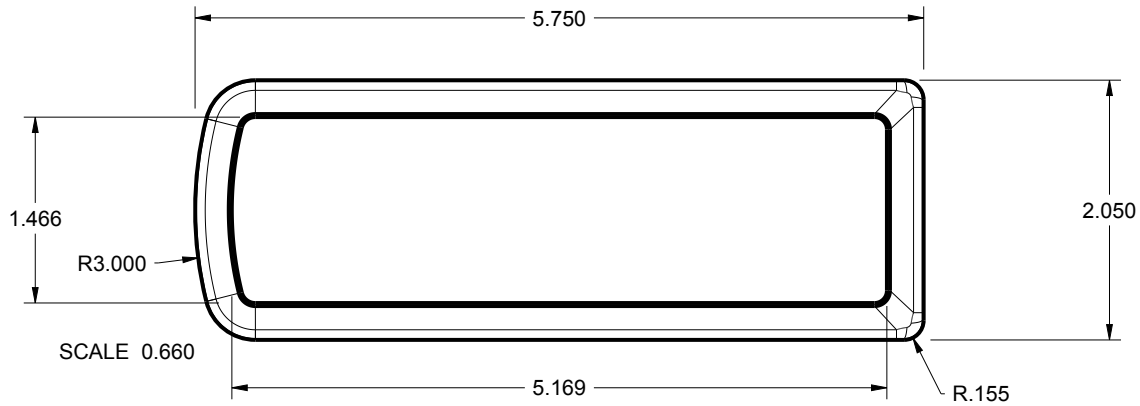
APPROVAL	BY	DATE
CHECK		
ENG.		
SCALE	AS NOTED	
DRAWN BY	2014-Oct-16	
R CRUZ		

**NEW AGE ENCLOSURES**  
4330 Santa Fe Road San Luis Obispo, CA. 93401  
ph. (805) 595-1310 fax (805) 595-1024  
[www.newageenclosures.com](http://www.newageenclosures.com)

**STANDARD - SLIM HANDHELD  
SXX-582109-XXX**

SIZE	DRAWING NAME	SHEET	REV.DOC
A	582109_RL	2 OF 7	L

582109 COVER



TOLERANCES: UNLESS OTHERWISE SPECIFIED  
DIMENSIONS ARE IN U.S. INCHES.  
X.XX = .015 X.XXXX = .001  
X.XXX = .010 X.X° = 1°

NEW AGE ENCLOSURES  
Customer's Part No: 582109

APPROVAL	BY	DATE
CHECK		
ENG.		
SCALE	AS NOTED	

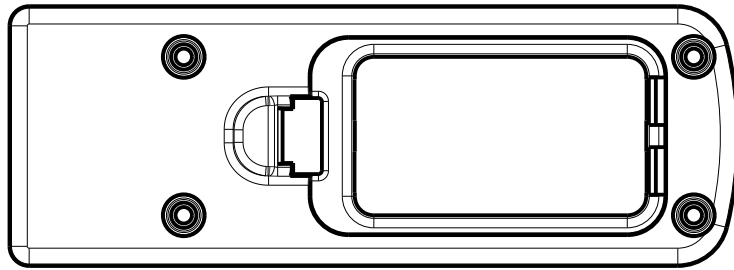
DRAWN BY  
R CRUZ 2014-Oct-16

**NEW AGE ENCLOSURES**  
4330 Santa Fe Road San Luis Obispo, CA. 93401  
ph. (805) 595-1310 fax (805) 595-1024  
[www.newageenclosures.com](http://www.newageenclosures.com)

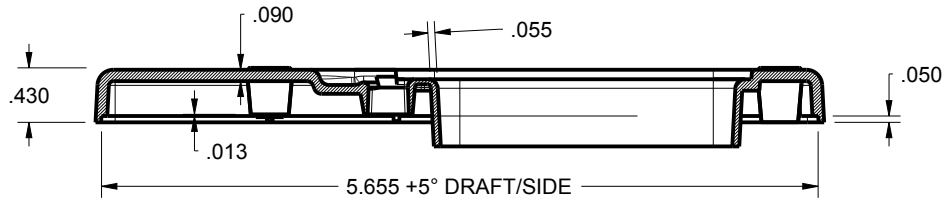
STANDARD - SLIM HANDHELD  
SXX-582109-XXX

SIZE A	DRAWING NAME 582109_RL	SHEET 3 OF 7	REV.DOC L
-----------	---------------------------	-----------------	--------------

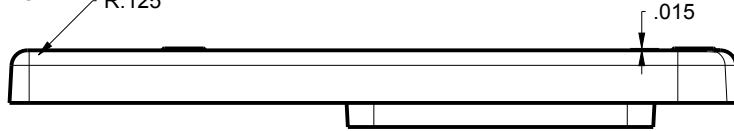
582109 BASE



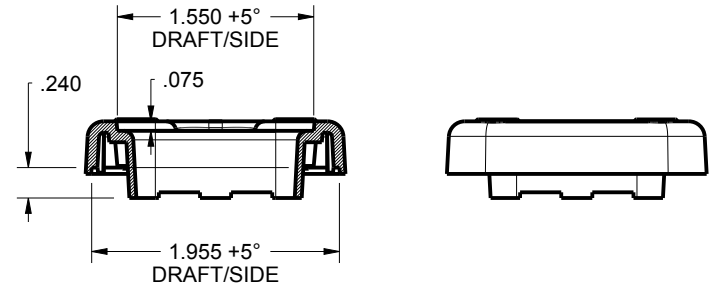
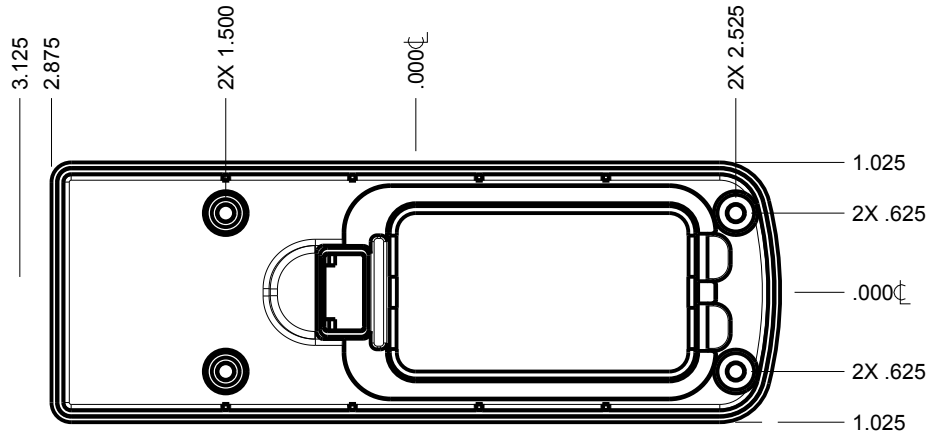
SCALE 0.660



SECTION Y-Y R.125



SECTION X-X



TOLERANCES: UNLESS OTHERWISE SPECIFIED  
DIMENSIONS ARE IN U.S. INCHES.  
X.XX = .015 X.XXXX = .001  
X.XXX = .010 X.X° = 1°

NEW AGE ENCLOSURES  
Customer's Part No: 582109

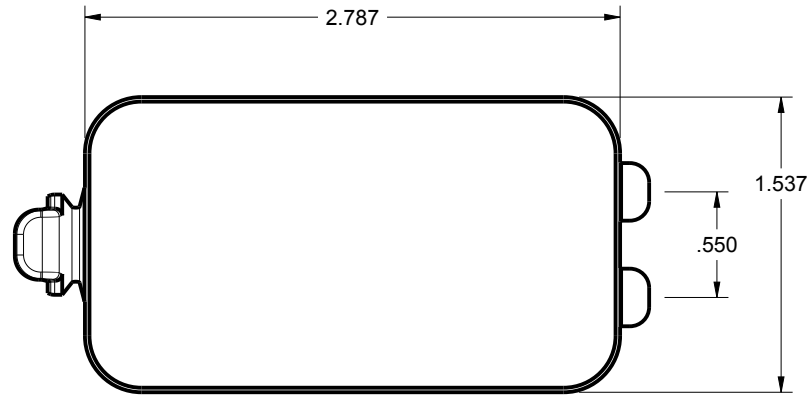
APPROVAL	BY	DATE
CHECK		
ENG.		
SCALE	AS NOTED	
DRAWN BY	2014-Oct-16	
R CRUZ		

**NEW AGE ENCLOSURES**  
4330 Santa Fe Road San Luis Obispo, CA. 93401  
ph. (805) 595-1310 fax (805) 595-1024  
[www.newageenclosures.com](http://www.newageenclosures.com)

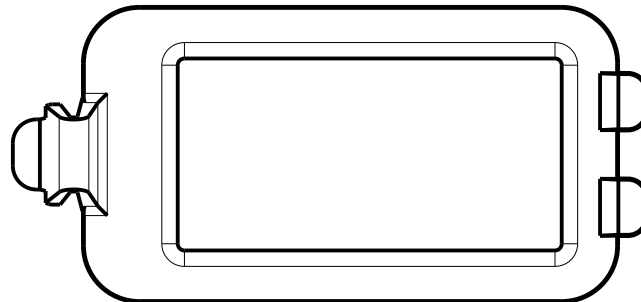
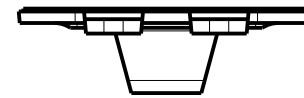
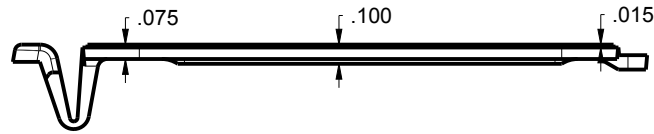
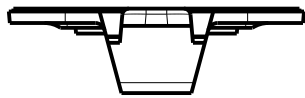
STANDARD - SLIM HANDHELD  
SXX-582109-XXX

SIZE	DRAWING NAME	SHEET	REV.DOC
A	582109_RL	4 OF 7	L

582109 HATCH



SCALE 1.000



TOLERANCES: UNLESS OTHERWISE SPECIFIED  
DIMENSIONS ARE IN U.S. INCHES.  
X.XX = .015 X.XXXX = .001  
X.XXX = .010 X.X° = 1°

NEW AGE ENCLOSURES

Customer's Part No: 582109

APPROVAL BY DATE

CHECK

ENG.

SCALE AS NOTED

DRAWN BY R CRUZ 2014-Oct-16

**NEW AGE ENCLOSURES**

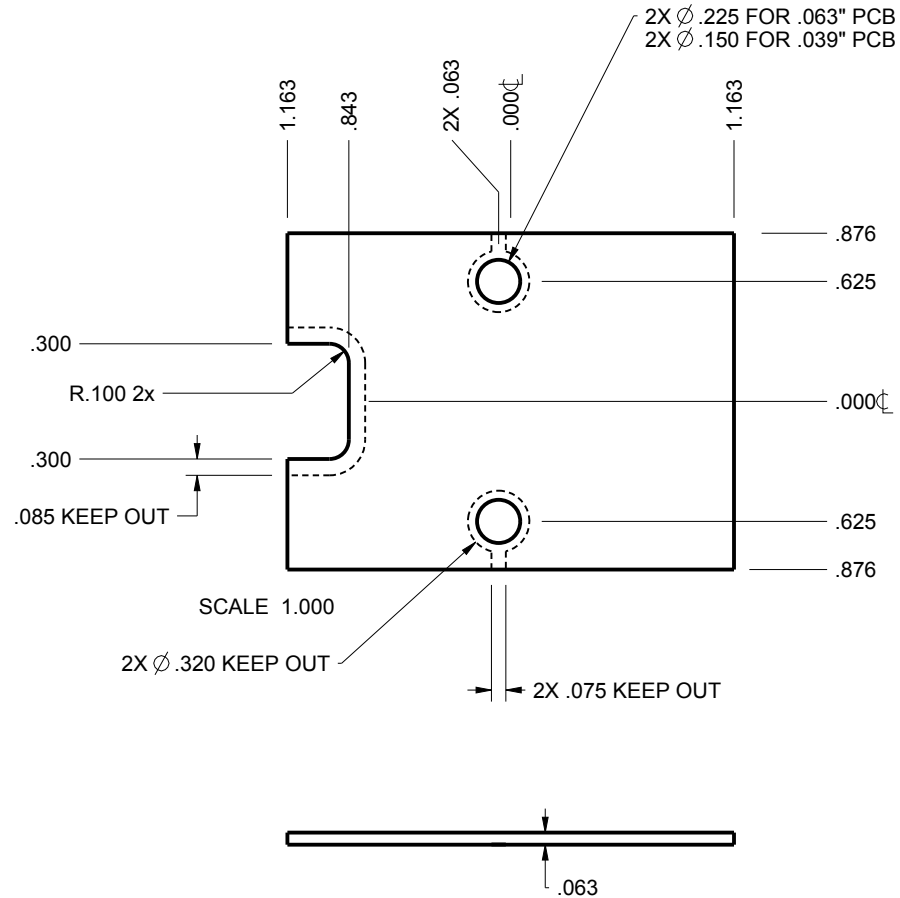
4330 Santa Fe Road San Luis Obispo, CA. 93401  
ph. (805) 595-1310 fax (805) 595-1024  
[www.newageenclosures.com](http://www.newageenclosures.com)

STANDARD - SLIM HANDHELD  
SXX-582109-XXX

SIZE A	DRAWING NAME 582109_RL	SHEET 5 OF 7	REV.DOC L
--------	------------------------	--------------	-----------

**582109 PCB - CUSTOMER SUPPLIED**

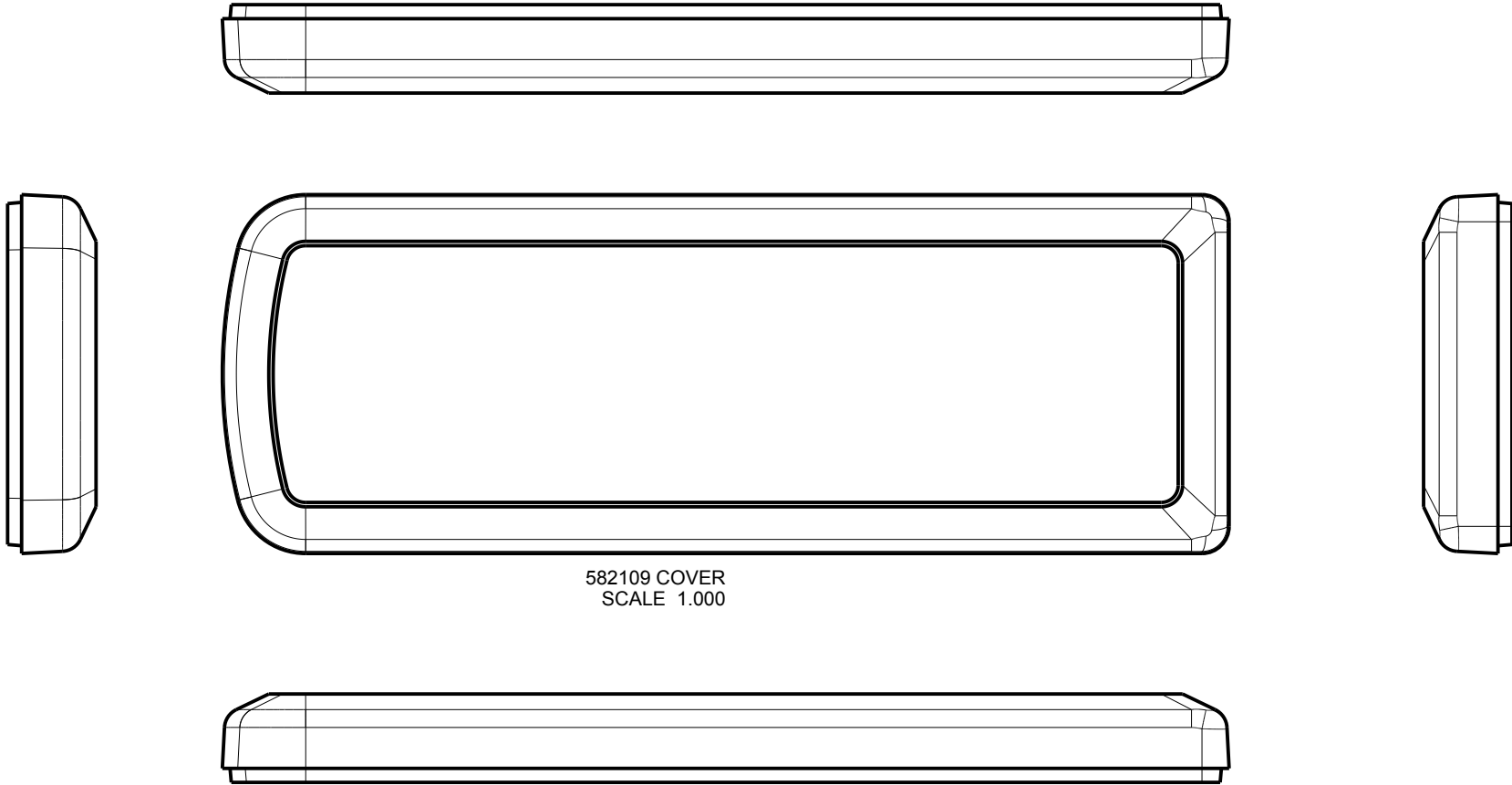
PCB SIZES ARE RECOMMENDATIONS ONLY. FINAL SIZES AND VERIFICATION OF IT'S FIT ARE THE SOLE RESPONSIBILITY OF THE OEM.



TOLERANCES: UNLESS OTHERWISE SPECIFIED DIMENSIONS ARE IN U.S. INCHES. X.XX = .015 X.XXXX = .001 X.XXX = .010 X.X° = 1°		<b>NEW AGE ENCLOSURES</b>	
Customer's Part No: 582109		4330 Santa Fe Road San Luis Obispo, CA. 93401 ph. (805) 595-1310 fax (805) 595-1024 <a href="http://www.newageenclosures.com">www.newageenclosures.com</a>	
APPROVAL	BY	DATE	<b>STANDARD - SLIM HANDHELD SXX-582109-XXX</b>
CHECK			
ENG.			
SCALE	AS NOTED		
DRAWN BY	2014-Oct-16	SIZE	DRAWING NAME
R CRUZ		A	582109_RL
		SHEET	REV.DOC
		6 OF 7	L

**582109 2nd OPERATION DETAILS**

NEW AGE ENCLOSURES DELIVERS YOUR ENCLOSURE MARKET-READY WITH IN-HOUSE  
 CNC MACHINING, PAD PRINTING, ASSEMBLY, AND FULFILLMENT.  
 ALL SURFACES AND AREAS ARE AVAILABLE FOR CNC ALTERATION BY NEW AGE ENCLOSURES  
 CALL (805) 595-1310 FOR PRICING AND SCHEDULE.  
 THE INSIDE RADIUS OF ANY MACHINED FEATURES SHOULD BE NO SMALLER THAN .031"



582109 COVER  
 SCALE 1.000

TOLERANCES: UNLESS OTHERWISE SPECIFIED  
 DIMENSIONS ARE IN U.S. INCHES.  
 X.XX = .015 X.XXXX = .001  
 X.XXX = .010 X.X° = 1°

NEW AGE ENCLOSURES

Customer's Part No: 582109

**NEW AGE ENCLOSURES**

4330 Santa Fe Road San Luis Obispo, CA. 93401  
 ph. (805) 595-1310 fax (805) 595-1024

[www.newageenclosures.com](http://www.newageenclosures.com)

**SXX-582109-XXX COVER - ABS, BLACK**

STEP	DESCRIPTION	CUTTER	FIXTURE	ORIENTATION	PROGRAM
1-C-C1	-	T2 = .062" EM	-	-	o1001
2-C-C2	-	T2 = .062" EM	-	-	o1002

APPROVAL	BY	DATE
CHECK		
ENG.		
SCALE	AS NOTED	
DRAWN BY		
R CRUZ	2014-Oct-16	

**STANDARD - SLIM HANDHELD  
 SXX-582109-XXX**

SIZE	DRAWING NAME	SHEET	REV.DOC
A	582109_RL	7 OF 7	L