

XPS / XQS (Axle Counter Cable)

Pair-twisted, waterblocked axle counter cable. The cable is intended for installation in ducts or in ground.

Description

Design

Pair-twisted (alternative 2-pars: quad-twisted), jelly filled, screened signalling cable with outer PE sheath. The cable is provided with a glass-fibre weave tape as anti-rodent protection. XPS/XQS is designed in accordance with NR/L2/SIG/30060 and is used in systems for axle counter train detection.

Quality System

Design, manufacture and testing according to the requirements in ISO 9001 and International Railway Industri Standard (IRIS).

Environmental management system

The activities at our plant in Grimsås are certified to ISO 14001.



Standards

National Customer specification

Characteristics

Construction characteristics	
Conductor shape	Round solid
Conductor material	Tinned copper
Insulation	Solid polyethylene
Material used for length water tightness	Jelly
Screen	Longitudinal aluminium tape
Outer sheath	LLDPE
Colour	Black
Usage characteristics	
Ambient installation temperature, range	-20 .. 40 °C
Operating temperature, range	-40 .. 70 °C



Ambient installation T°C range
-20 .. 40 °C



Operating temp. range
-40 .. 70 °C

XPS / XQS (Axle Counter Cable)

Product List

☎=Make to order, 📦=Make to stock

Nexans ref.	Country ref.	Name	Conductor diam. (mm)	nb pairs	Max. outer diam. (mm)
☎ 18120198	006/170021	XQS 1x4x0,9	0.9	2	13.8
☎ 18120298	006/170007	XPS 2x2x0,9	0.9	2	15.1
☎ 18121098	006/170008	XPS 10x2x0,9	0.9	10	24.7
☎ 18121298	006/170009	XPS 12x2x0,9	0.9	12	28.4
☎ 18121998	006/170034	XPS 19x2x0,9	0.9	19	31.4
☎ 18122498	006/170035	XPS 24x2x0,9	0.9	24	34.5
☎ 18122698	006/170050	XQS 1x4x1,4	1.4	2	16.4
☎ 18122798	006/170036	XPS 2x2x1,4	1.4	2	18.6
☎ 18123098	006/170037	XPS 10x2x1,4	1.4	10	31.4
☎ 18123298	006/170038	XPS 12x2x1,4	1.4	12	33.8
☎ 18123998	006/170039	XPS 19x2x1,4	1.4	19	40.8
☎ 18124498	006/170040	XPS 24x2x1,4	1.4	24	45.0

☎ = Make to order, 📦 = Make to stock

TRANSMISSION CHARACTERISTICS

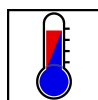
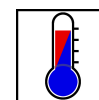
Characteristic impedance @90 kHz		Attenuation @40 KHz	
Ω		dB/Km	
0.9	1.4	0.9	1.4
125 - 145	105 - 125	Max 2.6	Max 2.0

Network Rail Certification


Certificate No: PA05/04709

Selling delivery information

XPS/XQS will be delivered on drums in lengths of 500-2000m. The drum is marked with manufacturer, type of cable and length. The ends of the cable are sealed.


 Ambient installation T°C range
 -20 .. 40 °C

 Operating temp. range
 -40 .. 70 °C

XPZ / XQZ (Axle Counter Cable)

Pair-twisted, waterblocked axle counter cable. The cable is intended for installation in ducts or in ground.

Description

Design

Pair-twisted (alternative 2-pars: quad-twisted), water-blocked, screened signalling cable with outer LSZH sheath. The cable is provided with a glass-fibre weave tape as anti-rodent protection. XPZ/XQZ is designed in accordance with NR/L2/SIG/30060 and is used in systems for axle counter train detection. Fire performance according to BS 6724.

Quality System

Design, manufacture and testing according to the requirements in ISO 9001 and International Railway Industri Standard (IRIS).

Environmental management system

The activities at our plant in Grimsås are certified to ISO 14001.



Standards

National Customer specification

Characteristics

Construction characteristics	
Conductor shape	Single wired
Conductor material	Tinned copper
Insulation	Solid polyethylene
Material used for length water tightness	Swellable yarn
Screen	Longitudinal aluminium tape
Outer sheath	LSZH
Colour	Black
Usage characteristics	
Ambient installation temperature, range	-20 .. 40 °C
Operating temperature, range	-40 .. 70 °C



Ambient installation T °C range
-20 .. 40 °C



Operating temp. range
-40 .. 70 °C

XPZ / XQZ (Axle Counter Cable)

Product List

☎=Make to order, 📦=Make to stock

Nexans ref.	Country ref.	Name	Conductor diam. (mm)	nb pairs	Max. outer diam. (mm)
☎ 18125198	006/170053	XQZ 1x4x0,9	0.9	2	13.8
☎ 18125298	006/170023	XPZ 2x2x0,9	0.9	2	15.1
☎ 18126098	006/170024	XPZ 10x2x0,9	0.9	10	24.7
☎ 18126298	006/170025	XPZ 12x2x0,9	0.9	12	28.4
☎ 18126498	006/170026	XPZ 19x2x0,9	0.9	19	31.4
☎ 18126698	006/170027	XPZ 24x2x0,9	0.9	24	34.5
☎ 18126898	006/170033	XQZ 1x4x1,4	1.4	2	16.4
☎ 18126998	006/170028	XPZ 2x2x1,4	1.4	2	18.6
☎ 18127198	006/170029	XPZ 10x2x1,4	1.4	10	31.4
☎ 18127298	006/170030	XPZ 12x2x1,4	1.4	12	33.8
☎ 18127498	006/170031	XPZ 19x2x1,4	1.4	19	40.8
☎ 18127698	006/170032	XPZ 24x2x1,4	1.4	24	45.0

☎ = Make to order, 📦 = Make to stock

TRANSMISSION CHARACTERISTICS

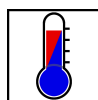
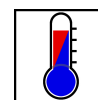
Characteristic impedance @90 kHz		Attenuation @40 KHz	
Ω		dB/Km	
0.9	1.4	0.9	1.4
125 - 145	105 - 125	Max 2.6	Max 2.0

Network Rail Certification


Certificate No: PA05/04709

Selling delivery information

XPZ/XQZ will be delivered on drums in lengths of 500-2000m. The drum is marked with manufacturer, type of cable and length. The ends of the cable are sealed.


 Ambient installation T°C range
 -20 .. 40 °C

 Operating temp. range
 -40 .. 70 °C

XPS-C41 (Axle Counter Cable)

Pair-twisted, waterblocked axle counter cable. The cable is intended for installation in ducts or in ground.

Description

Design

Pair-twisted (alternative 2-pars: quad-twisted), jelly filled, screened signalling cable with outer PE sheath. The cable is provided with a glass-fibre weave tape as anti-rodent protection. XPS-C41 is designed in accordance with NR/L2/SIG/30060 and is compliant with Thales NDUP Wayside Cable Specification. The cable is used in systems for axle counter train detection.



Standards

National Customer specification

Quality System

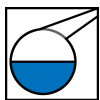
Design, manufacture and testing according to the requirements in ISO 9001.

Environmental management system

The activities at our plant in Grimsås are certified to ISO 14001.

Characteristics

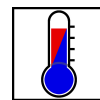
Construction characteristics	
Conductor shape	Round solid
Conductor material	Tinned copper
Insulation	Solid polyethylene
Material used for length water tightness	Jelly
Screen	Longitudinal aluminium tape
Outer sheath	LLDPE
Colour	Black
Mechanical characteristics	
Crush resistance (EN 187 000)	3 kN
Usage characteristics	
Oil resistance	Yes
Ozone resistance	Yes
U.V resistance	Yes
Ambient installation temperature, range	-20 .. 40 °C
Operating temperature, range	-40 .. 70 °C



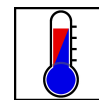
Oil resistance
Yes



U.V resistance
Yes



Ambient installation T °C range
-20 .. 40 °C



Operating temp. range
-40 .. 70 °C

XPS-C41 (Axle Counter Cable)

Product List

☎=Make to order, 📦=Make to stock

Nexans ref.	Name	Conductor diam. (mm)	nb pairs	Max. outer diam. (mm)
☎ 18140098	XPS-C41 2x2x0,9	0.9	2	15.1
☎ 18140498	XPS-C41 10x2x0,9	0.9	10	24.7
☎ 18140598	XPS-C41 12x2x0,9	0.9	12	28.4
☎ 18140898	XPS-C41 19x2x0,9	0.9	19	31.4
☎ 18141098	XPS-C41 24x2x0,9	0.9	24	34.5

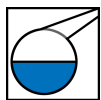
☎ = Make to order, 📦 = Make to stock

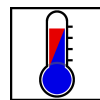
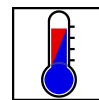
TRANSMISSION CHARACTERISTICS

Characteristic impedance @90 kHz		Attenuation @40 KHz	
Ω		dB/Km	
0.9	1.4	0.9	1.4
125 - 145	105 - 125	Max 2.6	Max 2.0

Selling delivery information

XPS-C41 will be delivered on drums in lengths of 500-2000m. The drum is marked with manufacturer, type of cable and length. The ends of the cable are sealed.


 Oil resistance
Yes

 U.V resistance
Yes

 Ambient installation T °C range
-20 .. 40 °C

 Operating temp. range
-40 .. 70 °C