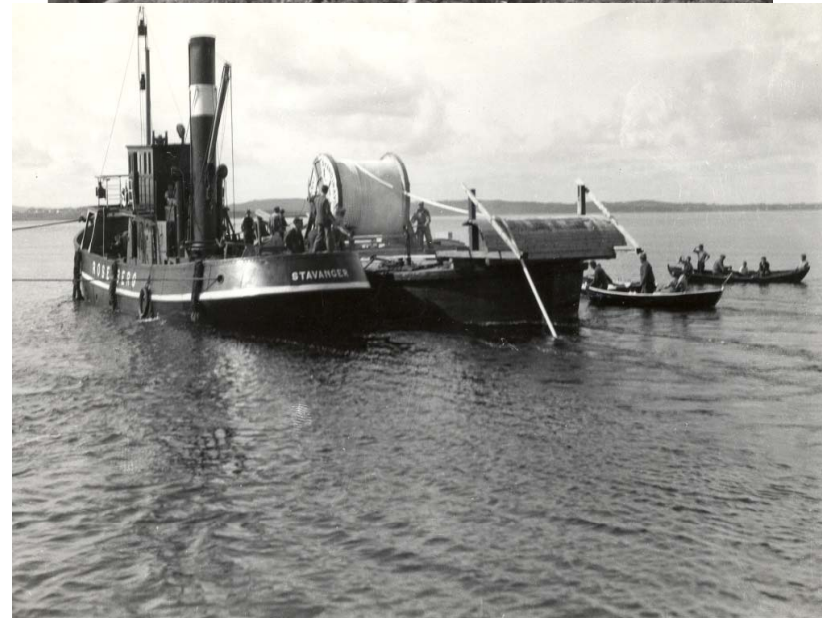




- Installation services has been an integrated part of our business since the establishment of the cable manufacturing company SKG in 1915.
- First High Voltage subsea cable installed in 1936 (Boknafjorden)
- Installed majority of the High Voltage subsea cables along the Norwegian coast to the present day
- Long experience in world wide installation of High Voltage cables and umbilicals
- Installation Section was established as an own unit in august 2006



- Marine Installation, a part of Installation section

Main scope:

- Installation of HV subsea cables, umbilicals, FO
- Trenching, Rock trenching and dredging

Sub departments:

- Engineering dep.
- Equipment & Maintenance dep.
- Laying & Trenching Operation dep.

Onshore staff:

- 31 permanent employees
- Variable up approx. 45 people

Offshore staff:

- 19 permanent employees
- Variable up to approx. 75 approx.





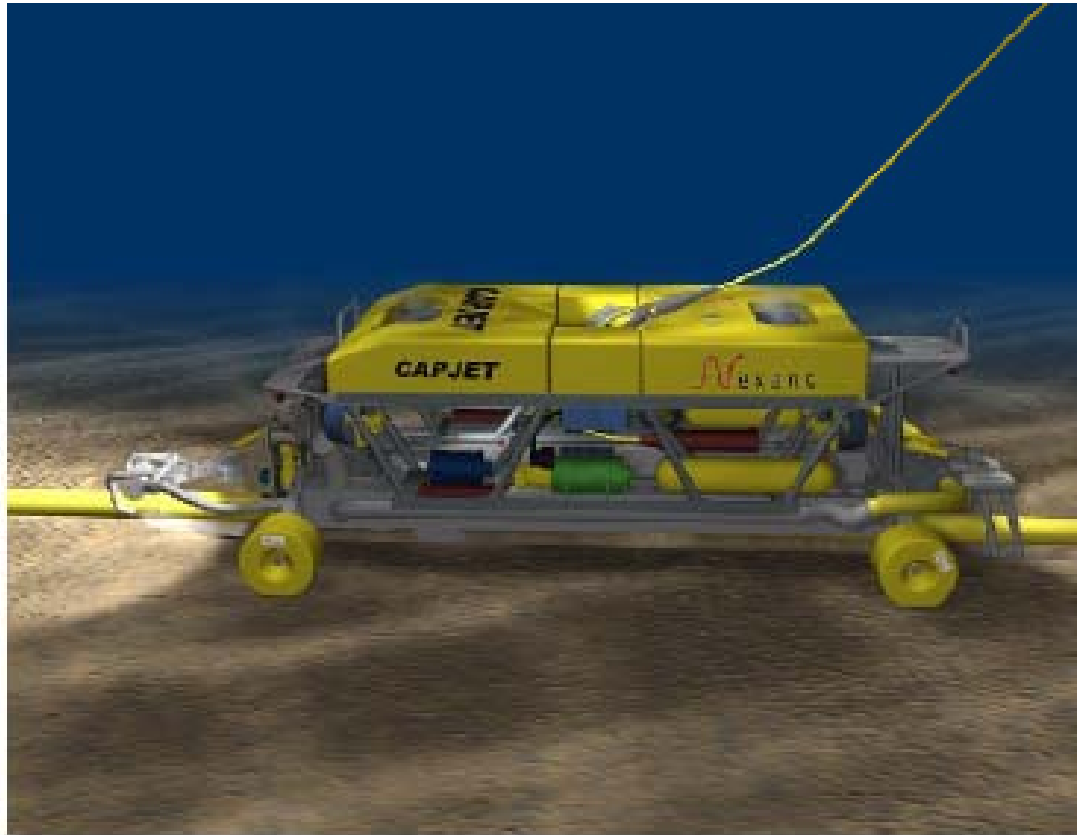
- Overall Length, 118 m.
- Breadth, 32 m.
- Load capacity, 7000 t.
- Total pull/breaking, 50 t.
- Max. Laying, 20 m/min.
- Vessel Speed, 10 kts.
- Flag, Norwegian
- Accommodation, 60 cab.
- Laying wheel 1x10 m.
- A-frame capacity 40 t.
- Draft at 9373 t, 5.40 m.
- DP2, Kongsberg SDP-521
- ROV, Argus Mariner



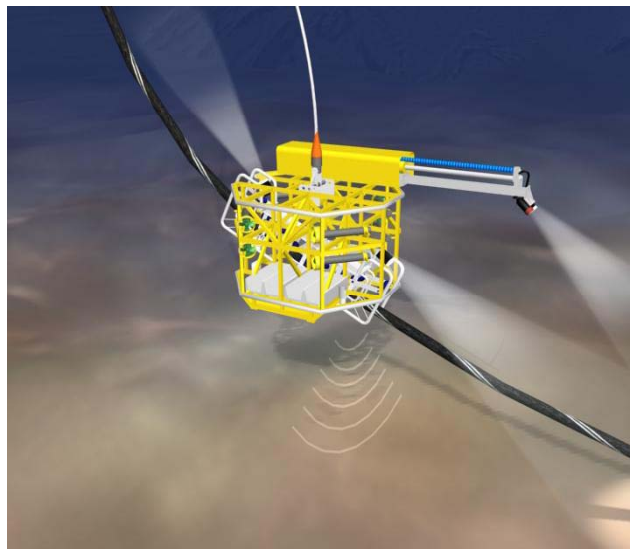
- ❑ Overall Length, 87 m.
- ❑ Breadth, 18 m.
- ❑ Load capacity, 1200 - 1800 t.
- ❑ Total pull/breaking, 12 t.
- ❑ Max. Laying, 20 m/min.
- ❑ Vessel Speed, 12 kts.
- ❑ Flag, Norwegian
- ❑ Accommodation, 31 cab. (44 beds)
- ❑ A-frame capacity 50 t.
- ❑ Draft, 4.80 m.
- ❑ DP2, Kongsberg SDP-521
- ❑ ROV, Argus Mariner



- **Eide Barge 32**
 - North Sea construction barge equipped for cable transport and laying
 - Loa x B = 91 x 27 m
 - Deck unit load = 15 t/m²
 - Deadweight = 10000 tones
 - Equipped with 2600 metric tones turntable
 - Optional anchor system and accommodation units



- 2 x 420 kW water pumps
- Operation up to Hs 3.5 m
- Trenching Max. 10 m/min
- 3 m burial depth
- Operating down to 1500 m.
- Vessel dependent
- Adjustable front and aft swords
- Vertical lifting 600 mm
- Pressure from 10 to 16 bar
dependent of project req.
- LARS 16 t
- CAPJET, 8 x 4 x 2.5 m, 14.5 t



- Complete ARGUS Mariner XL WROV spread.
- Complete Captrack cable touch down tracking vehicle
- ROV tool skid with HPU
- Subsea cable cutting systems
- Subsea cable recovery clamps
- Subsea cable handling bows and guides



- Turntables with payload up to 2600 tonnes and OD 24 m.
- Various reels and reel drive units
- Tensioner units from 1 to 15 tonnes capacity.
- Large selection of specialised cable handling gear:
 - Cable chutes
 - Roller units
 - Cable bows
 - etc.
- 9 x 22' purpose built workboats
- Various smaller workboats, pontoons etc.
- Complete High Voltage splice/repair spreads

