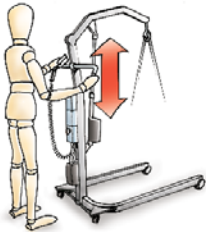


MEDLINE[®]
IMPROVING EFFICIENCY

CARELINE[®]
IMPROVING EFFICIENCY

JUMBO Home™

- Gives you a lift



www.linak.com/medline-careline

LINAK® 
WE IMPROVE YOUR LIFE

JUMBO Home™ - gives you a lift

... in production

The JUMBO Home enables simple and precise adjustment of the system according to the EN10535 norm. Simply use a special LINAK hand control and drive the lift one time up and down with the safe working load attached to the lifting arm. The JUMBO Home control box is then adjusted to lift the safe working load.

Benefits are:

- Ensure that the patient lift is used within the safe working load
- Increased safety
- Easy compliance with norm requirements
- Easy mounting with two screws

... in usage

The JUMBO Home has an increased amount of information on the control box such as a charging indicator. Furthermore, the control box ensures a safe and comfortable lift for the patient via soft start. The control box provides an audio sound when the battery level is critically low and needs charging.

Facts

According to the European standard EN 10535 a patient lift is only allowed to lift max 1.5 time the specified Safe Working Load indicated on the patient lift.

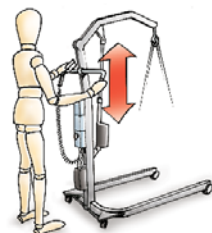
By lifting the SWL one time up and down the current cut-off is set and the hoist is set to lift less than 1.5 time the max load. The JUMBO Home makes it easy to comply with the norm.

JUMBO Home™ - is a specially developed solution for patient lifts. The control has a battery enclosed in a single elegant module



JUMBO Home :

- Availability of information on the control box:
 - Charging indicator (yellow light)
 - Handset activation indicator (green light)
- Audio signals if battery must be charged
- Button for electrical emergency lowering on the control box
- Soft start function
- Control box and batteries in a single module
- You can choose:
 - External charger or
 - Internal charger

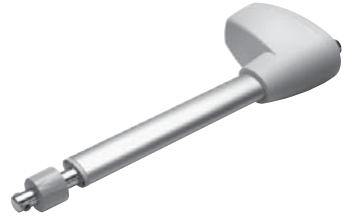


Patient lift system

Lifting motors

LA44 – a powerful actuator solution

The LA44 actuator has a compact design, an outstanding performance and a wide range of safety options, which makes it the right choice for patient lifts. Max thrust of up to 12,000 N.



LA31 – designed for patient hoists

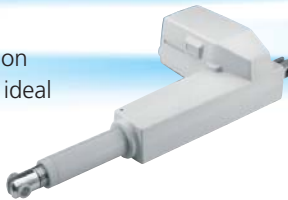
The LA31 actuator is designed for long and hard use. The solid construction provides an additional degree of comfort and security to the lift. It is suitable for both lifting and leg spread functions.



Leg spread motors and hand controls

LA31

Design and quiet operation make the LA31 actuator ideal for leg spread functions.



HB70 and HB80

The JUMBO Home™ can be operated by means of the HB70 or the HB80. It is possible to have a LINAK front cover or customised front covers for both hand controls.



Terms of use

The user is responsible for determining the suitability of LINAK products for a specific application. LINAK takes great care in providing accurate and up-to-date information on its products. However, due to continuous development in order to improve its products, LINAK products are subject to frequent modifications and changes without prior notice. Therefore, LINAK cannot guarantee the correct and actual status of said information on its products. While LINAK uses its best efforts to fulfil orders, LINAK cannot, for the same reasons as mentioned above, guarantee the availability of any particular product. Therefore, LINAK reserves the right to discontinue the sale of any product displayed on its website or listed in its catalogues or other written material drawn up by LINAK.

All sales are subject to the Standard Terms of Sale and Delivery for LINAK. For a copy hereof, please contact LINAK.