



Product Overview Helical Gear Drive Solutions



Helical-Gear Motor Series BG



Compact and economical inline helical-gear motors designed to operate with minimal maintenance.

- Motor power from 0.04 HP to 100 HP
- 13 gearbox sizes for torques from 175 lbf-in Nm to 160,000 lbf-in
- New attachment possibilities with low design height
- High efficiency through 2 stage base design
- Enclosure IP 65 as standard
- Service friendly built-on brake

Shaft-Mounted Gear Motor Series BF



Shaft-mounted gear motors with integrated torque arm are easily integrated and economically applied.

- Gearbox housing with integral torque arm
- Motor power from 0.04 HP to 100 HP
- 10 gearbox sizes for torques from 795 lbf-in to 160,000 lbf-in
- High efficiency through 2 stage base design
- Enclosure IP 65 as standard
- Service friendly built-on brake

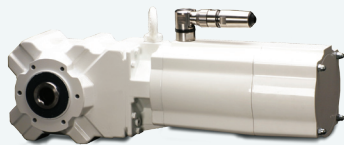
Helical Bevel-Gear Motor Series BK



Power-dense, right-angle, bevel-gear motors ensure the highest efficiency especially when used with frequency inverters.

- The right angle gearbox with universal attachment possibilities
- Motor power from 0.04 HP to 100 HP
- 10 gearbox sizes for torques from 705 lbf-in to 160,000 lbf-in
- High efficiency through 2 stage base design
- Enclosure IP 65 as standard
- Service friendly built-on brake

AsepticDrive™



Gear motors for the food & beverage industry as well as for all applications with high cleaning intensity or ambient conditions such as dust, fluff etc.

- Motor without fan and cooling fins
- Motor power
DA08 .49 HP - 2.01 HP
DA09 .33 HP - .73 HP
DA11 1.47 HP - 2.94 HP
- Available with helical, parallel shaft, bevel and worm gears
- Motor winding in ISO Class F with thermistors as standard
- Enclosure IP 67 and IP 69K with acid and alkali resistant coating as standard
- Motor connection through standard stainless steel plug connector

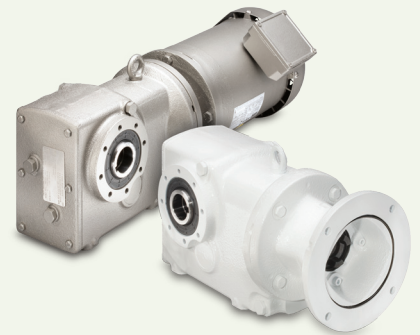
CleanConnect®



Specially developed for the requirements of the beverage industry: Enclosure IP 67, gold coated contacts and smooth surface for a reliable current and signal transmission in wet environments.

- Cleaning friendly and detergent resistive surface
- Standardized M25 threaded connection
- Connectable without tools, coded for foolproof connection
- EMC conform due to shielding connection
- Available with straight or angular connection

Competitive Displacement Helical Gear Drives

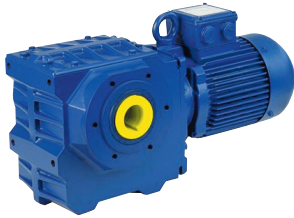


2000 Series is a New Helical-Bevel product family from Boston Gear and Bauer Gear Motor

Design driven by a Voice of Customer study which resulted in prioritization of:

- Improving performance and efficiency
- Extending life and reducing maintenance
- Expanding flexibility of user interfaces
- Maximizing customer value
- Dimensional drop-in for SEW Eurodrive

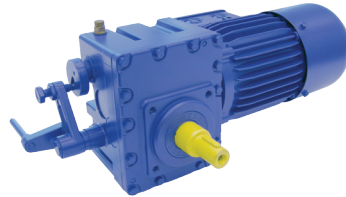
Helical Worm-Gear Motor Series BS



Economical, right-angle, worm-gear motors install easily in the tightest applications.

- Motor power from 0.04 HP to 7.37 HP
- 8 gearbox sizes for torques from 220 lbf-in to 8,850 lbf-in
- Hollow shaft version available from 220 lbf-in
- High loadable worm gearing for long lifetime
- Enclosure IP 65 as standard
- Service friendly optional brake

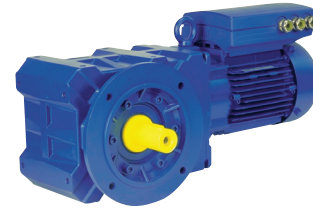
Overhead Monorail Gear Motor Series BM



A completely new range of monorail drives for light and heavy load monorail applications.

- Torques from 265 lbf-in up to 6020 lbf-in
- Radial force up to 1.45 lbf-in
- Flexible mounting on the running gear
- Enclosure IP 65 as standard
- Improved efficiency – lower energy consumption – ideal as traveling drives
- Reverse motion of the gearbox is possible

Frequency Converter Gear Motor Series Eta-K



Eta-K solutions are combinations of gear motors and frequency converters. They provide compact drive solutions with infinite speed control.

- Saving space and money
- No shielded motor cables required
- Mechatronic adaption of VLT drive and gear motor
- Motor power range 0.16 HP up to 10.05 HP
- Supply voltage 3 x 380 V - 480 V
- Compliance with all EMC standards
- Standard RS485-Interface, optional Profibus-Interface
- ⚠ Zone 2 and 22 possible
- UL approved

Direct Drop-in Convenience

- Dimensionally interchangeable with industry standard envelope and mounting dimensions including SEW KA Series
- Responsive & Reliable Lead-times
- C-Face or integral gear motor designs to meet customer needs

Enhanced Product Performance

- Higher rated output torque capacity than leading competitors (~10% higher on average)
- Larger motor HP capability
- Higher power density in the same size package

Quick Installation

- Mounting register surfaces for quick alignment
- Keyless Tapered Bushing design enables more secure fit with end user's driven shaft while greatly reducing fretting corrosion

Easy to Maintain

- Larger diameter fill & drain plugs for quick oil changes
- Rounded exterior to prevent particle accumulation and better withstand wash-down

Custom Product Design Flexibility

- Expanded hollow bore options and multiple output shaft diameters

Longer Lifecycle Enables Lower Cost of Ownership

- Increased rated torque performance translates to an exponential increase in product life when used under the same operating conditions
- Magnetic filtration feature automatically removes wear debris for longer product life

Voice of Customer Focused

- The evolution & design of 2000 Series was based upon customer feedback & requirements

Electromagnetic Clutches and Brakes	Couplings	Heavy Duty Clutches and Brakes	Overrunning Clutches
<p>Warner Electric <i>Electromagnetic Clutches and Brakes</i> New Hartford, CT - USA 1-800-825-6544 <i>For application assistance: 1-800-825-9050</i></p> <p>St Barthelemy d'Anjou, France +33 (0) 2 41 21 24 24</p> <p><i>Precision Electric Coils and Electromagnetic Clutches and Brakes</i> Columbia City, IN - USA 1-260-244-6183</p> <p>Matrix International <i>Electromagnetic Clutches and Brakes, Pressure Operated Clutches and Brakes</i> Brechin, Scotland +44 (0) 1356 602000 New Hartford, CT - USA 1-800-825-6544</p> <p>Inertia Dynamics <i>Spring Set Brakes; Power On and Wrap Spring Clutch/Brakes</i> New Hartford, CT - USA 1-800-800-6445</p>	<p>Ameridrives Couplings <i>Mill Spindles, Ameriflex, Ameridisc</i> Erie, PA - USA 1-814-480-5000</p> <p><i>Gear Couplings</i> San Marcos, TX - USA 1-800-458-0887</p> <p>Bibby Transmissions <i>Disc, Gear, Grid Couplings, Overload Clutches</i> Dewsbury, England +44 (0) 1924 460801 Boksburg, South Africa +27 11 918 4270</p> <p>TB Wood's <i>Elastomeric Couplings</i> Chambersburg, PA - USA 1-888-829-6637 – Press #5 <i>For application assistance: 1-888-829-6637 – Press #7</i></p> <p><i>General Purpose Disc Couplings</i> San Marcos, TX - USA 1-888-449-9439</p> <p>Ameridrives Power Transmission <i>Universal Joints, Drive Shafts, Mill Gear Couplings</i> Green Bay, WI - USA 1-920-593-2444</p> <p>Huco Dynatork <i>Precision Couplings and Air Motors</i> Hertford, England +44 (0) 1992 501900 Charlotte, NC - USA 1-800-825-6544</p>	<p>Wichita Clutch <i>Pneumatic Clutches and Brakes</i> Wichita Falls, TX - USA 1-800-964-3262 Bedford, England +44 (0) 1234 350311</p> <p>Twiflex Limited <i>Caliper Brakes and Thrusters</i> Twickenham, England +44 (0) 20 8894 1161</p> <p>Industrial Clutch <i>Pneumatic and Oil Immersed Clutches and Brakes</i> Waukesha, WI - USA 1-262-547-3357</p>	<p>Formsprag Clutch <i>Overrunning Clutches and Holdbacks</i> Warren, MI - USA 1-800-348-0881 – Press #1 <i>For application assistance: 1-800-348-0881 – Press #2</i></p> <p>Marland Clutch <i>Roller Ramp and Sprag Type Overrunning Clutches and Backstops</i> South Beloit, IL - USA 1-800-216-3515</p> <p>Stieber Clutch <i>Overrunning Clutches and Holdbacks</i> Heidelberg, Germany +49 (0) 6221 30 47 0</p>
<p>Linear Products</p> <p>Warner Linear <i>Linear Actuators</i> Belvidere, IL - USA 1-800-825-6544 <i>For application assistance: 1-800-825-9050</i></p> <p>St Barthelemy d'Anjou, France +33 (0) 2 41 21 24 24</p>		<p>Gearing</p> <p>Boston Gear <i>Enclosed and Open Gearing, Electrical and Mechanical P.T. Components</i> Charlotte, NC - USA 1-800-825-6544 <i>For application assistance: 1-800-816-5608</i></p> <p>Bauer Gear Motor <i>Geared Motors</i> Esslingen, Germany +49 (711) 3518-0</p> <p>Nuttall Gear and Delroyd Worm Gear <i>Worm Gear and Helical Speed Reducers</i> Niagara Falls, NY - USA 1-716-298-4100</p>	<p>Belted Drives and Sheaves</p> <p>TB Wood's <i>Belted Drives</i> Chambersburg, PA - USA 1-888-829-6637 – Press #5 <i>For application assistance: 1-888-829-6637 – Press #7</i></p> <p>Engineered Bearing Assemblies</p> <p>Kilian Manufacturing <i>Engineered Bearing Assemblies</i> Syracuse, NY - USA 1-315-432-0700</p> <p><i>For information concerning our sales offices in Asia Pacific check our website www.altramotion.com.cn</i></p>



www.bauergears.com

31 Schoolhouse Road
Somerset, NJ 08873 - USA
Phone: 732-469-8770
Fax: 732-469-8773



www.bostongear.com

701 Carrier Drive
Charlotte, NC 28216 - USA
Phone: 704-588-5610
Fax: 704-588-7181

Customer Service:
800-825-6544
Application Assistance:
800-816-5608