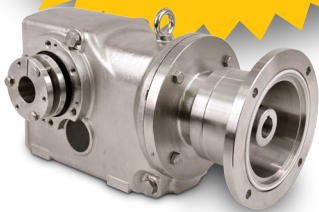


Stainless Steel 700 Series Worm Gear Speed Reducers & Gearmotors



**Expanded Stainless
Steel Line Now Includes**

- Single Reduction - now up to 100:1
- Double Reduction - up to 3600:1
- AC Stainless Motors: 0.5 to 3HP
- Planetary multiplier models
- Helical Bevel models



**REDUCER
EXPRESS**

**SAME DAY
GUARANTEED
SHIPMENT**

 **Boston**[®]
Gear

An Altra Industrial Motion Company

Stainless Steel 700 Series Speed Reducers... Trusted Worm Gearing with a Revolutionary Smooth Exterior to Withstand Caustic Washdown

NSF National Sanitation Foundation Certified

Laser marked nameplate provides worry-free part identification while maintaining a smooth, unetched surface

Rounded housing prevents foreign matter adherence and fluid accumulation

316 Stainless Steel housing, motor flange and carrier to withstand tough washdown environments

Metal detectable covers for all hardware and counter bored holes prevent particle accumulation and pooling fluids to optimize washdown efficiency

Optional Stainless Steel output flange mounting

Two-piece mounting base maintains standard 700 Series footprint and enables the unit to be washed down without trapping foreign matter under the reducer

Food grade Klubersynth UH1 6-460 maximizes torque capacity

Large oil reservoir provides highly efficient heat dissipation and lubrication for longer operating life. Up to 20% more oil capacity than standard 700 series.

High strength bronze worm gear is straddle mounted between heavy-duty tapered roller bearings to increase thrust and overhung load capacities.

Double lipped shaft seals ensure superior performance and leak resistance

Integral input worm and shaft design made from high strength case hardened alloy steel

High pressure angle on worm provides greater operating efficiency

Motor flange design incorporates an O-ring to minimize ingress of particles or fluids

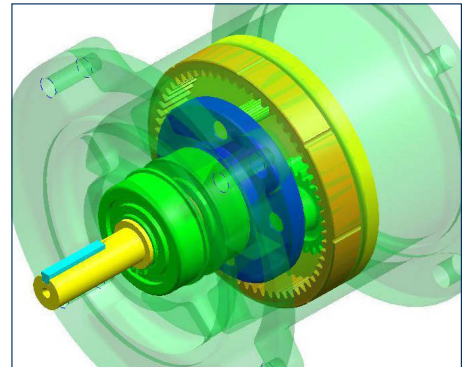
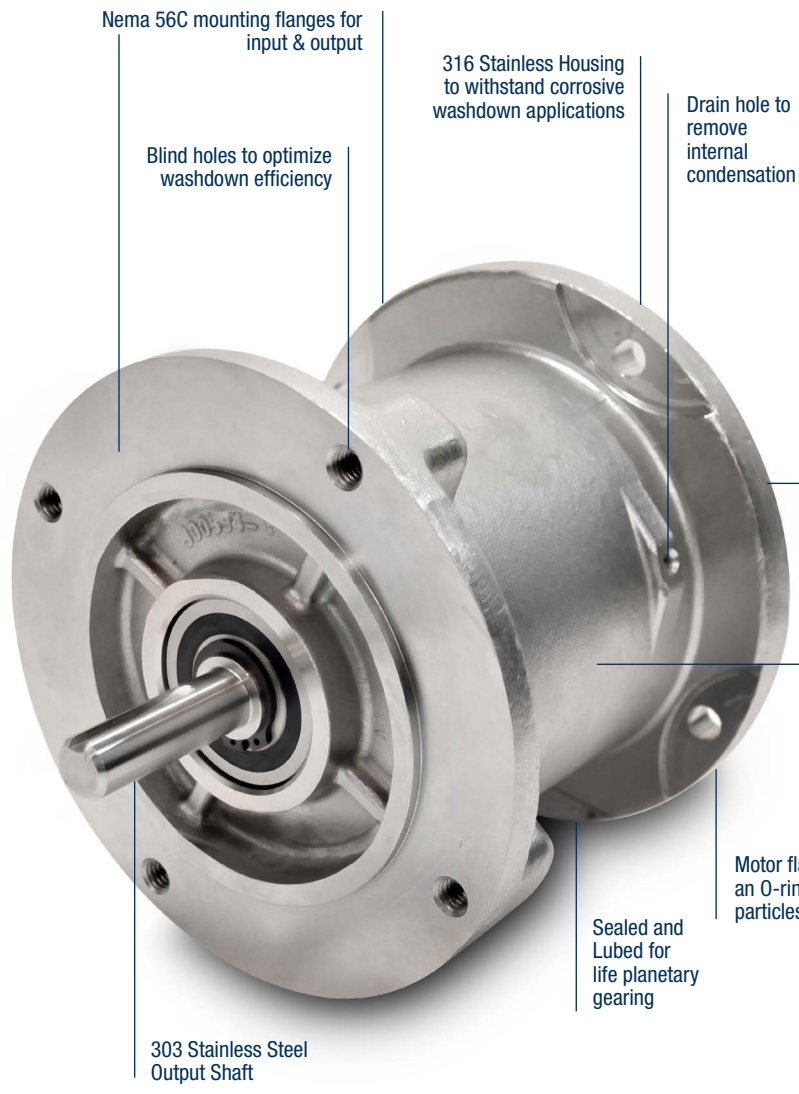
Flange features (2) jackbolt holes for easy motor dismount

Motor frame sizes 56C to 180TC

Available in hollow and solid output shafts

303 Stainless Steel output shafts

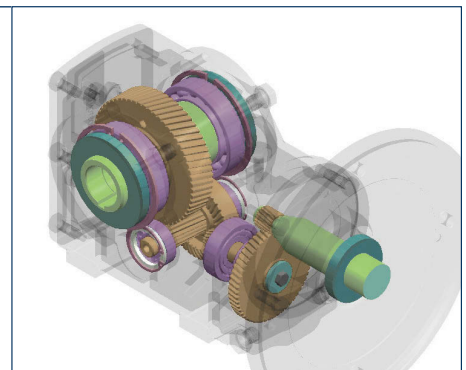
Planetary Multiplier... Expanded Speed Reduction while Maintaining Operating Efficiency



**High Efficiency, Quiet Operation
Planetary Gearing**

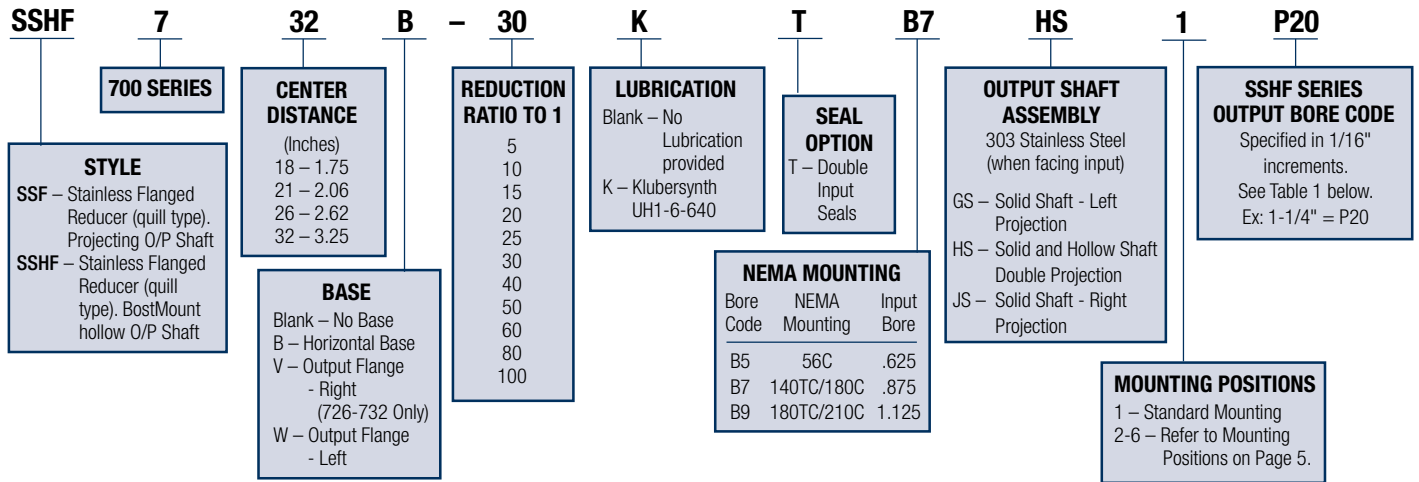


For more information about our
NEW Stainless Steel Helical Bevel Products refer to P-7077-BBG

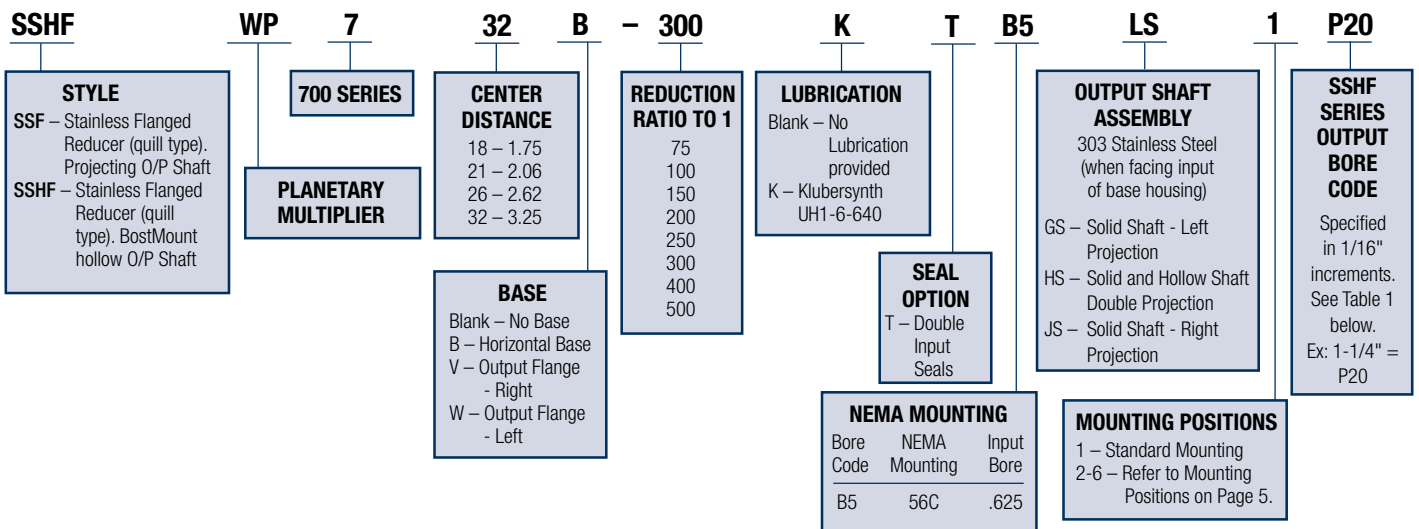


SS700 Series How to Order

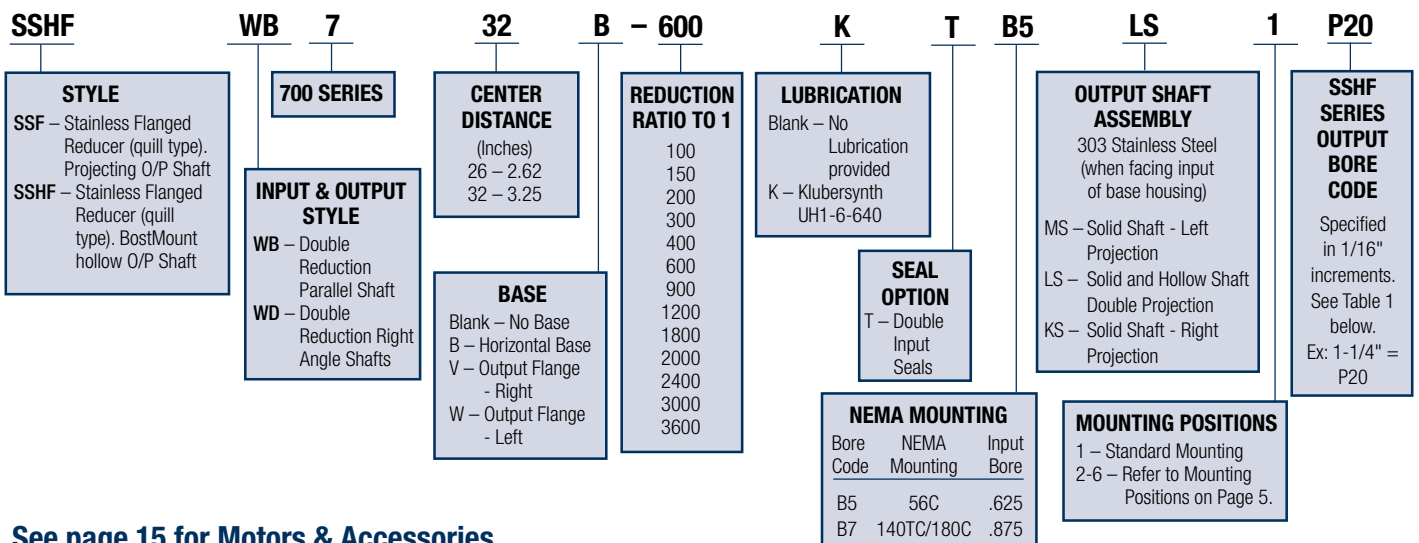
Single Reduction Worm Speed Reducer



Double Reduction Worm - Planetary Speed Reducer



Double Reduction Worm - Worm Speed Reducer



See page 15 for Motors & Accessories

Table 1: Hollow Output Shaft Bore Codes

Fraction Size	Output Bore Code	718	721	726	732	Decimal Size*	Key Size†
3/4	P12	•	•			.7500	.187 x .156 x 1.00
15/16	P15	•	•	•		.9375	.25 x .218 x 1.37
1	P16	S	S	•		1.0000	.25 x .218 x 1.37
1-1/8	P18		•	•		1.1250	.25 x .218 x 1.37
1-3/16	P19		S	•	•	1.1875	.25 x .218 x 1.37
1-1/4	P20		S	S	•	1.2500	.25 x .218 x 1.37
1-7/16	P23		S	S	S	1.4375	.375 x .312 x 1.75
1-1/2	P24			S	S	1.5000	.375 x .312 x 1.75
1-15/16	P31			•	S	1.9375	.50 x .375 x 2.00
2	P32				•	2.0000	.50 x .375 x 2.00
2 3/16	P36				•	2.1875	.50 x .375 x 2.00

*Bore tolerance +.0015 – .0000

S Standard Bore – Included in Express Program

• Optional Bore

† Key is provided with reducer to fit hollow shaft. Drive shaft requires standard width and depth keyway.

Note: For all other bore sizes, contact factory.

Lubrication

Enclosed Worm Gear Reducers Lubricant Available from Boston Gear

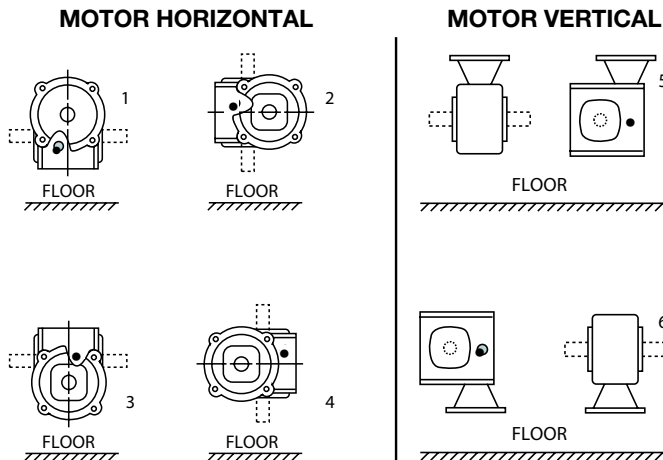
Ambient (Room) Temperature	Recommended Oil (or equivalent)	Viscosity Range SUS @ 100°F	ISO Viscosity Grade No.	Klubersynth UH1 6-460 Qt. Part No.
-30° to 225°F** (-34° to 107°C)	Klubersynth* UH1 6-460 Synthetic Food Grade Oil	1950/2500	460	65159

*Synthetic recommendation is exclusively Klubersynth UH1 6-460, other lubricants will void warranty.

** The Klubersynth UH1 6-460 lubricant will perform at temperatures considerably higher than 225°F. However, the factory should always be consulted prior to operating at higher temperatures, as damage may occur to oil seals and other components.

Oil Levels For Typical Mounting Positions

(Examples shown for single-reduction models only)



• Indicates proper oil level.

Double input seals are recommended for all positions except #1 and #5.

Oil Capacity in Fluid Ounces

Unit Size	Positions					
	1	2	3	4	5 & 6	
718	12.0	16.0	18.5	16.0	16.0	
721	15.0	20.5	20.5	19.0	19.0	
726	28.0	36.0	43.0	36.0	36.0	
732	58.0	84.0	90.0	80.0	80.0	

Double reduction gearboxes require the primary and secondary boxes to be filled independently to their respective mounting position.

SS700 Series Single Reduction

Single Reduction

Series Size			718			721			726			732		
Ratio	Input RPM	Output RPM	Input HP	Output		Input HP	Output		Input HP	Output		Input HP	Output	
				HP	Torque (in-lbs)		HP	Torque (in-lbs)		HP	Torque (in-lbs)		HP	Torque (in-lbs)
5	1750	350	2.55	2.40	432	3.66	3.44	620	6.11	5.74	1034	10.05	9.54	1716
	1150	230	1.42	1.28	350	2.33	2.10	575	4.05	3.64	1000	8.43	7.91	2165
	690	138	.97	.87	400	1.64	1.47	670	3.04	2.74	1250	6.53	6.02	2749
	100	20	.17	.14	460	.30	.26	820	.58	.51	1600	1.38	1.19	3735
10	1750	175	1.61	1.49	536	2.34	2.19	789	3.94	3.74	1345	6.22	5.85	2106
	1150	115	.98	.87	480	1.49	1.32	725	2.82	2.54	1390	4.41	3.92	2150
	690	69	.66	.58	534	1.00	.89	814	1.97	1.75	1600	3.17	2.85	2600
	100	10	.12	.097	610	.19	.15	968	.37	.31	1960	.62	.52	3300
15	1750	116.7	1.13	1.02	552	1.72	1.56	840	2.95	2.71	1465	4.65	4.34	2344
	1150	77.7	.67	.57	472	1.06	.91	752	2.01	1.73	1425	3.15	2.74	2250
	690	46	.46	.39	534	.72	.61	832	1.41	1.22	1675	2.35	2.04	2800
	100	6.7	.086	.063	597	.13	.10	968	.28	.22	2057	.48	.39	3700
20	1750	87.5	.97	.82	590	1.40	1.24	892	2.34	2.06	1483	3.71	3.35	2413
	1150	57.5	.58	.48	525	.86	.72	782	1.63	1.36	1500	2.77	2.37	2600
	690	34.5	.38	.32	580	.57	.48	875	1.11	.94	1725	1.99	1.70	3100
	100	5.0	.080	.055	690	.11	.080	1018	.20	.16	2050	.41	.30	3846
25	1750	70	.76	.64	574	1.16	.97	875	1.94	1.68	1514	3.08	2.71	2443
	1150	46	.48	.36	500	.72	.58	790	1.31	1.11	1525	2.29	1.90	2600
	690	27.6	.30	.24	540	.47	.38	875	.93	.77	1750	1.51	1.27	2900
	100	4.0	.063	.042	660	.094	.062	975	.18	.13	2075	.31	.22	3500
30	1750	58.3	.65	.53	573	.99	.81	871	1.68	1.41	1521	2.64	2.27	2456
	1150	38.3	.40	.32	530	.62	.48	795	1.20	.96	1575	2.80	2.23	2675
	690	23	.29	.22	600	.41	.32	880	.81	.65	1790	1.41	1.16	3200
	100	3.3	.057	.037	710	.086	.055	1050	.16	.11	2100	.30	.21	4000
40	1750	43.8	.57	.42	609	.81	.61	876	1.33	1.05	1512	2.10	1.70	2444
	1150	28.8	.33	.24	525	.49	.36	785	.89	.68	1500	1.52	1.19	2600
	690	17.3	.22	.16	580	.33	.24	875	.61	.47	1725	1.08	.85	3100
	100	2.5	.052	.027	690	.074	.040	1018	.14	.081	2050	.25	.15	3846
50	1750	35	.44	.32	573	.66	.48	857	1.08	.82	1484	1.70	1.33	2403
	1150	23	.24	.17	470	.38	.27	750	.75	.54	1482	1.21	.89	2450
	690	13.8	.17	.12	520	.26	.18	840	.51	.37	1675	.87	.61	2800
	100	2.0	.038	.019	590	.057	.031	970	.11	.063	1975	.19	.10	3325
60	1750	29.2	.35	.24	527	.55	.38	826	.89	.64	1385	1.40	1.06	2281
	1150	19.2	.21	.13	440	.34	.22	730	.64	.42	1390	1.05	.70	2300
	690	11.5	.14	.084	480	.23	.15	805	.44	.29	1570	.71	.48	2650
	100	1.7	.030	.014	530	.055	.025	930	.10	.050	1840	.16	.083	3100
80	1750	21.9	.23	.13	375	.38	.22	634	.76	.38	1100	.95	.62	1795
	1150	14.4	.16	.089	390	.31	.17	734	.47	.29	1252	.81	.50	2171
	690	8.6	.10	.048	350	.23	.11	819	.35	.18	1340	.61	.34	2512
	100	1.3	.020	.009	470	.05	.02	942	.07	.030	1600	.14	.06	3030
100	1750	17.5	.17	.09	323	.27	.14	503	.39	.21	757	.65	.39	1414
	1150	11.5	.14	.07	360	.22	.11	580	.34	.17	913	.56	.31	1711
	690	6.9	.10	.04	391	.16	.07	646	.26	.12	1054	.43	.22	1980
	100	1.0	.020	.01	435	.04	.01	744	.06	.02	1267	.10	.04	2387
Overhung Load*			500 lbs.			700 lbs.			1000 lbs.			1300 lbs.		
Output Shaft Thrust Load			500 lbs.			700 lbs.			900 lbs.			1100 lbs.		

Ratings shown reflect maximum gear capacity with Klubersynth UH1 6-460.

*Overhung Load is at centerline of output shaft projection and with NO THRUST Load.

Note: For input speeds above 1750 RPM. Do NOT exceed maximum listed input horsepower.

Refer to chart on page 5 for information on lubricants.

SS700 Series Double Reduction

Ratios and Performance

Worm-Planetary Double Reduction (WP)

Series Size			SS_WP718			SS_WP721			SS_WP726			SS_WP732		
Ratio	Input RPM	Output RPM	Input HP	Output		Input HP	Output		Input HP	Output		Input HP	Output	
				HP	Torque (in-lbs)		HP	Torque (in-lbs)		HP	Torque (in-lbs)		HP	Torque (in-lbs)
75	1750	23.3	0.27	0.21	570	0.44	0.34	910	0.75	0.57	1542	0.75	0.57	1542
100	1750	17.5	0.25	0.18	643	0.38	0.27	957	0.74	0.53	1912	0.75	0.54	2072
150	1750	11.7	0.18	0.12	663	0.26	0.18	978	0.53	0.36	1969	0.75	0.51	2747
200	1750	8.8	0.14	0.09	643	0.20	0.13	957	0.42	0.27	1912	0.75	0.49	3509
250	1750	7	0.10	0.06	560	0.16	0.1	915	0.33	0.21	1848	0.54	0.34	3103
300	1750	5.8	0.09	0.05	510	0.15	0.08	877	0.30	0.16	1726	0.50	0.27	2909
400	1750	4.4	0.07	0.03	413	0.13	0.06	890	0.22	0.1	1490	0.44	0.2	2811
500	1750	2.9	0.05	0.02	416	0.09	0.04	702	0.16	0.07	1177	0.28	0.12	2215
Overhung Load*			500 lbs			700 lbs			1000 lbs			1300 lbs		
Output Shaft Thrust Load			500 lbs			700 lbs			900 lbs			1100 lbs		

Stand-Alone Planetary			SSFSPS and SSFSP5A		
Ratio	Input RPM	Output RPM	Input HP	Output	
				HP	Torque (in-lbs)
5	1750	350	0.75	0.69	124

Ratings shown reflect maximum gear capacity with Klubersynth UH1 6-460.

Worm-Planetary and Stand-Alone Planetary gearing is not recommended for use in applications with repetitive vibrational or impact loading.

*Overhung Load is at centerline of output shaft projection and with NO THRUST Load.

Note: For input speeds above 1750 RPM. Do NOT exceed maximum listed input horsepower.

Worm-Worm Double Reduction (WB & WD)

Series Size			SS_WP718			SS_WP721		
Ratio	Input RPM	Output RPM	Input HP	Output		Input HP	Output	
				HP	Torque (in-lbs)		HP	Torque (in-lbs)
100	1750	17.5	0.75	0.5	1785	1.33	0.96	3450
150	1750	11.7	0.56	0.34	1840	1	0.67	3600
200	1750	8.8	0.47	0.26	1875	0.81	0.53	3800
300	1750	5.8	0.37	0.18	1950	0.61	0.36	3950
400	1750	4.4	0.31	0.14	1950	0.48	0.27	3900
600	1750	2.9	0.25	0.092	2000	0.36	0.18	4025
900	1750	1.9	0.21	0.06	2000	0.28	0.12	4025
1200	1750	1.5	0.19	0.045	1950	0.23	0.092	3900
1800	1750	0.97	0.16	0.027	1775	0.19	0.058	3750
2000	1750	0.88	0.16	0.027	1940	0.22	0.054	3880
2400	1750	0.73	0.15	0.021	1864	0.17	0.036	3143
3000	1750	0.58	0.14	0.016	1800	0.15	0.035	3750
3600	1750	0.49	0.13	0.014	1865	0.14	0.024	3154
Overhung Load*			1000 lbs.			1300 lbs.		
Output Shaft Thrust Load			900 lbs.			1100 lbs.		

Ratings shown reflect maximum gear capacity with Klubersynth UH1 6-460.

*Overhung Load is at centerline of output shaft projection and with NO THRUST Load.

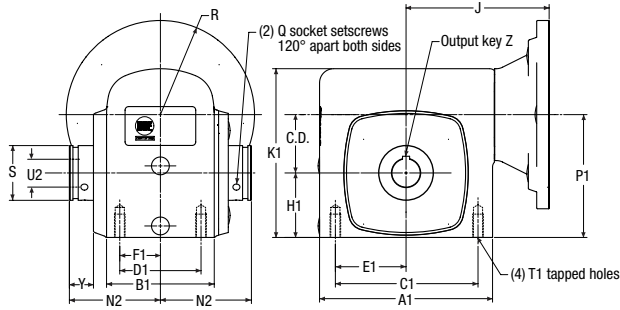
Note: For input speeds above 1750 RPM. Do NOT exceed maximum listed input horsepower.

SS700 Series Single Reduction, With and Without Base

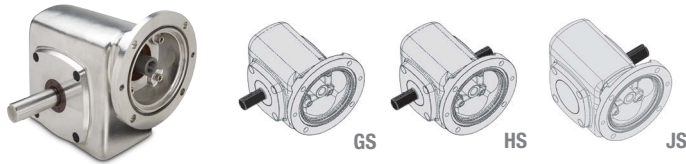
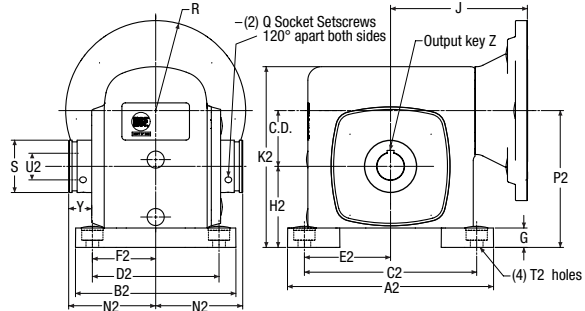
Ratios and Performance



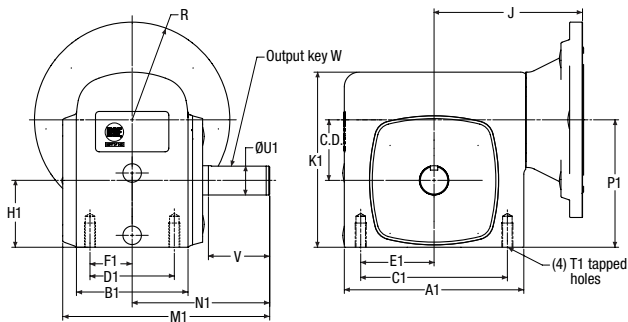
SSHF700 Hollow Shaft without Base



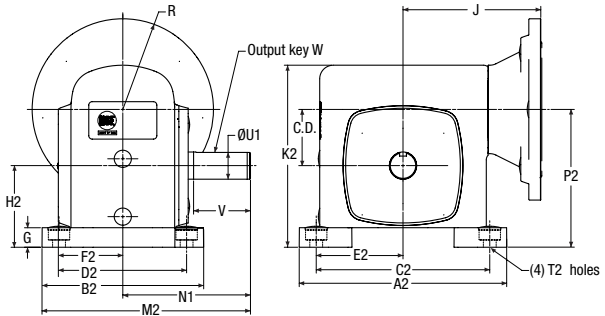
SSHF700 Hollow Shaft with Base



SSF700 GS Solid Shaft without Base



SSF700 GS Solid Shaft with Base



SIZE	C.D.	A1	A2	B1	B2	C1	C2	D1	D2	E1	E2	F1	F2
718	1.75	5.63	7.00	3.69	5.75	4.19	5.75	2.75	4.50	2.09	2.88	1.38	2.25
721	2.06	6.12	7.62	3.81	5.94	5.00	6.38	2.88	4.69	2.50	3.19	1.44	2.34
726	2.62	7.58	9.25	4.44	6.50	6.38	8.00	3.38	5.25	3.19	4.00	1.69	2.63
732	3.25	9.20	11.00	5.88	7.62	7.50	9.50	4.00	6.13	3.75	4.75	2.00	3.06

SIZE	G	H1	H2	J		K1	K2	M1	M2	N1	N2	P1	P2	Q
				56C/140TC	180TC									
718	0.69	2.06	2.75	4.69	—	5.31	6.00	6.74	7.19	4.31	3.03	3.81	4.50	#10-32
721	0.72	2.28	3.00	5.06	—	5.97	6.69	7.09	7.66	4.69	3.22	4.34	5.06	1/4-28
726	0.75	2.94	3.69	5.75	6.19	7.50	8.25	8.33	8.87	5.63	3.44	5.56	6.31	5/16-24
732	0.88	3.50	4.38	6.56	7.00	9.25	10.13	10.49	10.99	7.06	4.31	6.75	7.63	5/16-24

SIZE	R		S	T1	T2 C'Bore / Hole Dias.	U1	V	W	Max U2	Y	Z	Approx. Weight (lbs.)			
	56C/140TC	180TC										SSF700	SSHF700	SSF700B	SSHF700B
718	3.33	—	1.38	5/16-18	.60/.41	0.875	1.78	3/16 x 1	1.000	0.60	*	22	25	25	28
721	3.33	—	2.00	3/8-16	.78/.47	1.000	2.09	1/4 x 1-1/4	1.4375	0.82	*	27	30	30	33
726	3.33	4.63	2.50	3/8-16	.78/.53	1.125	2.63	1/4 x 1-15/16	1.9375	0.73	*	40	47	44	51
732	3.33	4.63	2.88	7/16-14	.78/.53	1.375	3.25	5/16 x 2-7/16	2.1875	0.89	*	63	76	70	83

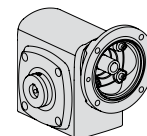
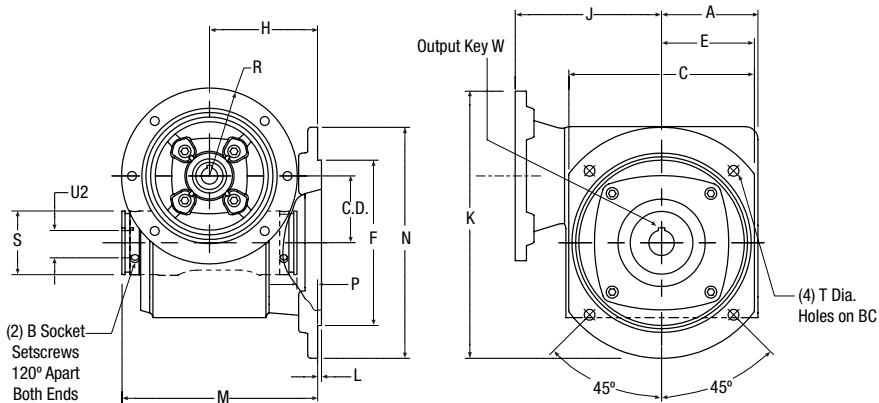
* Refer to Table 1 on page 11.

SS700 Series Single Reduction, With Output Flange

Dimensions

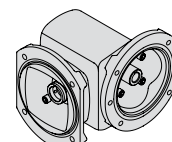
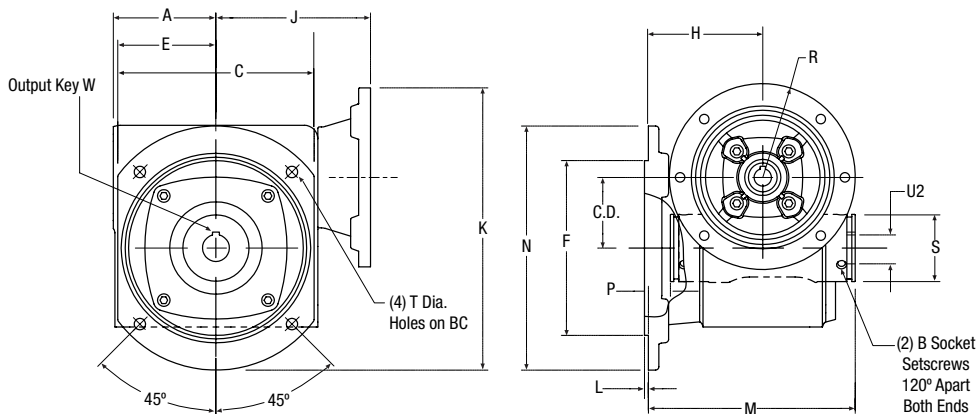


SSHF700V Hollow Output Shaft, V Position



V Output Flange
(sizes 726 & 732 only)

SSHF700W Hollow Output Shaft, W Position



W Output Flange

SIZE	C.D.	A	B	C	B.C.	E	F	H	J		K	L
									56C/140TC	180TC		
718	1.75	2.82	#10-32	5.53	5.88	2.77	5.47	3.62	4.69	—	8.55	.15
721	2.06	3.06	1/4-28	6.03	6.50	3.02	5.25	3.94	5.06	—	9.17	.15
726	2.62	3.80	5/16-24	7.29	8.00	3.65	6.50	4.45	5.75	6.19	10.50	.15
732	3.25	4.60	5/16-24	8.79	10.00	4.40	8.00	5.50	6.56	7.00	12.22	.15

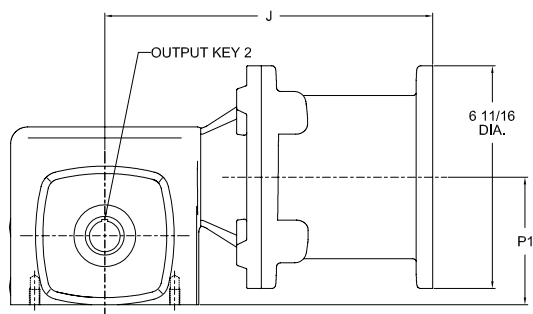
SIZE	M	N	P	R		S	T**		Low Speed Shaft				Approx Weight (lbs.)	
				56C/140TC	180TC		Hole Dia	C-Bore Depth	Hollow Bore Output		Max U2	W - Key		
									Sq.	Length				
718	6.65	6.94	.59	3.33	—	1.38	.362	.600	1.0000	*	*	29		
721	7.16	7.56	.72	3.33	—	2.00	.425	.600	1.4375	*	*	34		
726	7.89	9.08	1.01	3.33	4.63	2.50	.425	.600	1.9375	*	*	51		
732	9.81	11.28	1.19	3.33	4.63	2.88	.535	.808	2.1875	*	*	80		

* Refer to Table 1 on page 11.

** Designed for use with socket head capscrews.

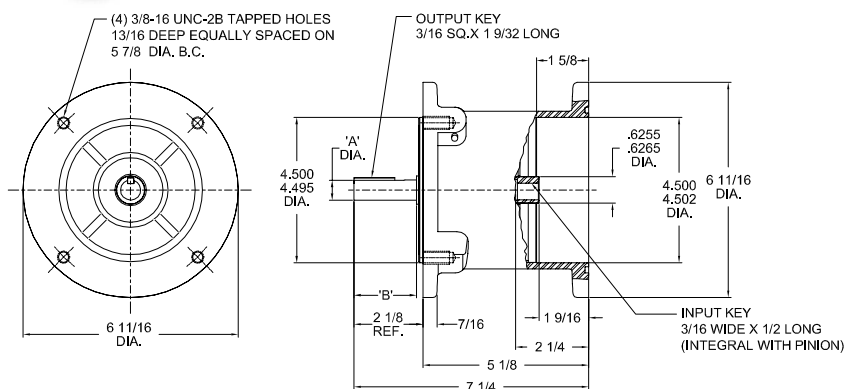
SS700 WP Series Double Reduction

Dimensions



Size	C.D.	J		P1
		56/140TC	180TC	
718	1.75	9.81	-	3.81
721	2.06	10.18	-	4.34
726	2.62	10.87	11.31	5.56
732	3.25	11.68	12.12	6.75

Stand-Alone Planetary Multiplier



All Dimensions in Inches

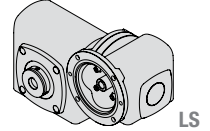
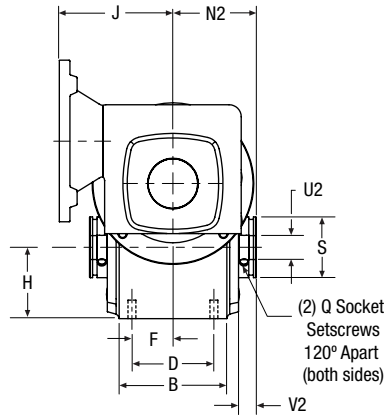
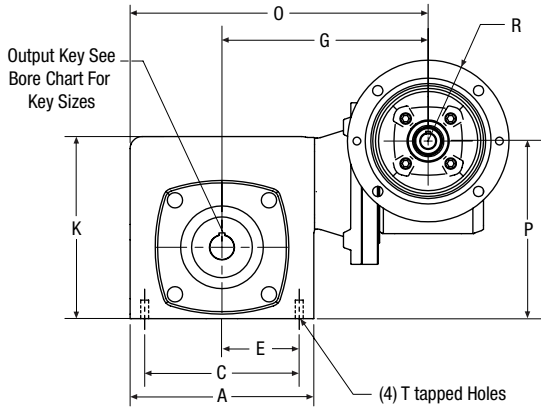
Catalog Number	A Shaft Dia.	B Shaft Length	Output NEMA Frame Size	Input NEMA Frame Size
SSFSP-5A	.6245	1-15/16	56C	56C
	.6240			
SSFSP-5	.8745	2	140TC	56C
	.8740			

SS700 WB Series Double Reduction, Parallel Shafts

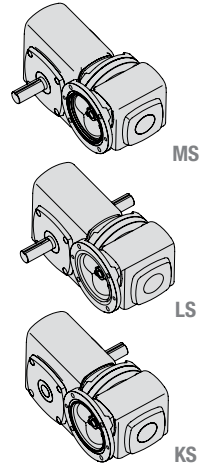
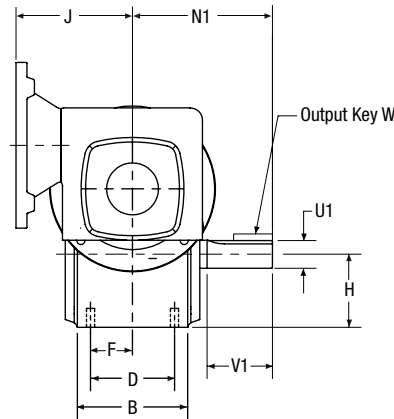
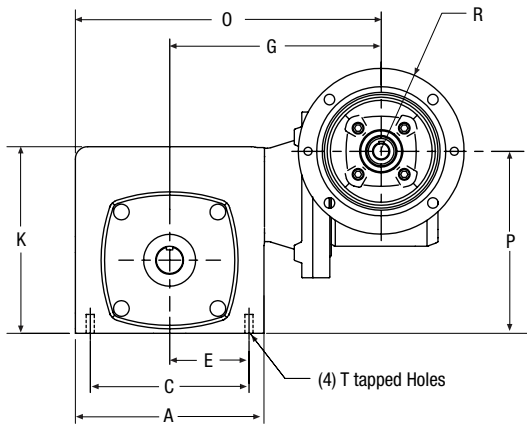
Dimensions



SSHFWB700 Hollow Output Shaft



SSF700 Solid Output Shaft



SIZE	A	B	C	D	E	F	G	H	J 56C/140TC	K	N1	N2	O	P
726	7.58	4.44	6.38	3.38	3.19	1.69	8.56	2.94	4.68	7.50	5.63	3.44	12.35	7.32
732	9.20	5.88	7.50	4.00	3.75	2.00	9.37	3.50	4.68	9.25	7.06	4.31	13.97	8.50

SIZE	Q	R 56C/140TC	S	T		Low Speed Shaft						Approx Weight (lbs.)	
				Tap Size	Depth	Solid Output Shaft			Hollow Bore Output				
						U1	V1	W-Key		Max U2	V2		
				Sq.	Length			SSFWD	SSHFWD				
726	5/16-24	3.33	2.50	3/8-16	.56	1.125	2.63	1/4	1-15/16	1.9375*	.73	62	69
732	5/16-24	3.33	2.88	7/16-14	.66	1.375	3.25	5/16	2-7/16	2.1875*	.88	85	98

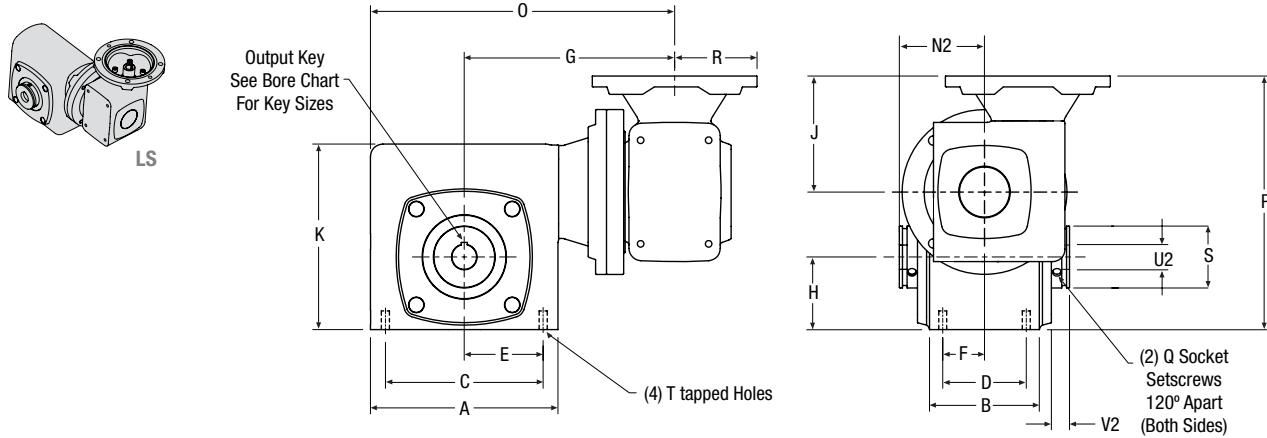
* Refer to Table 1 on page 11.

SS700 WD Series Double Reduction, Right Angle Shafts

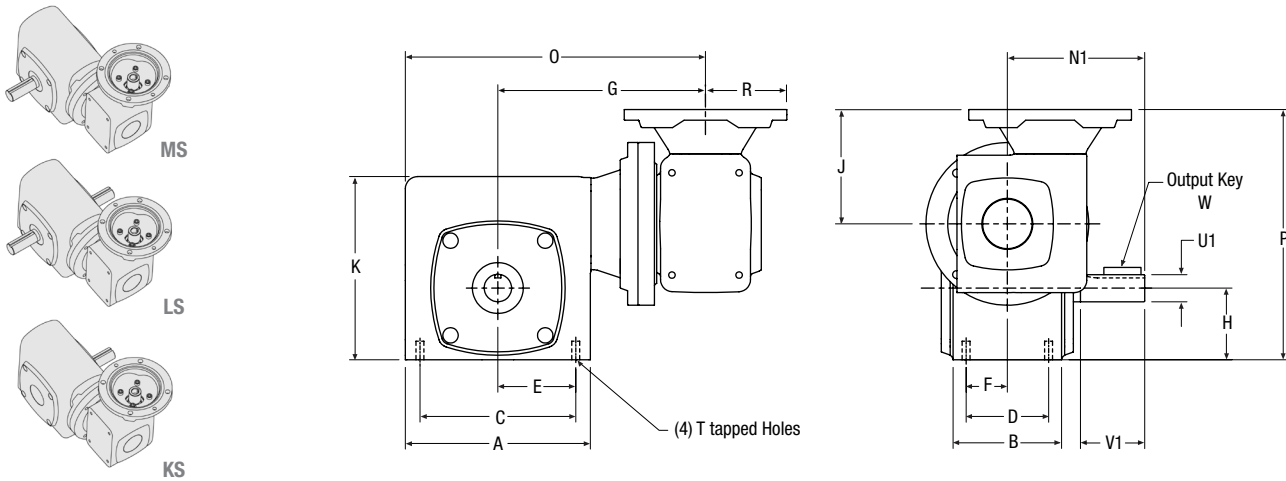
Dimensions



SSHFWD700 Hollow Output Shaft



SSFWD700 Solid Output Shaft



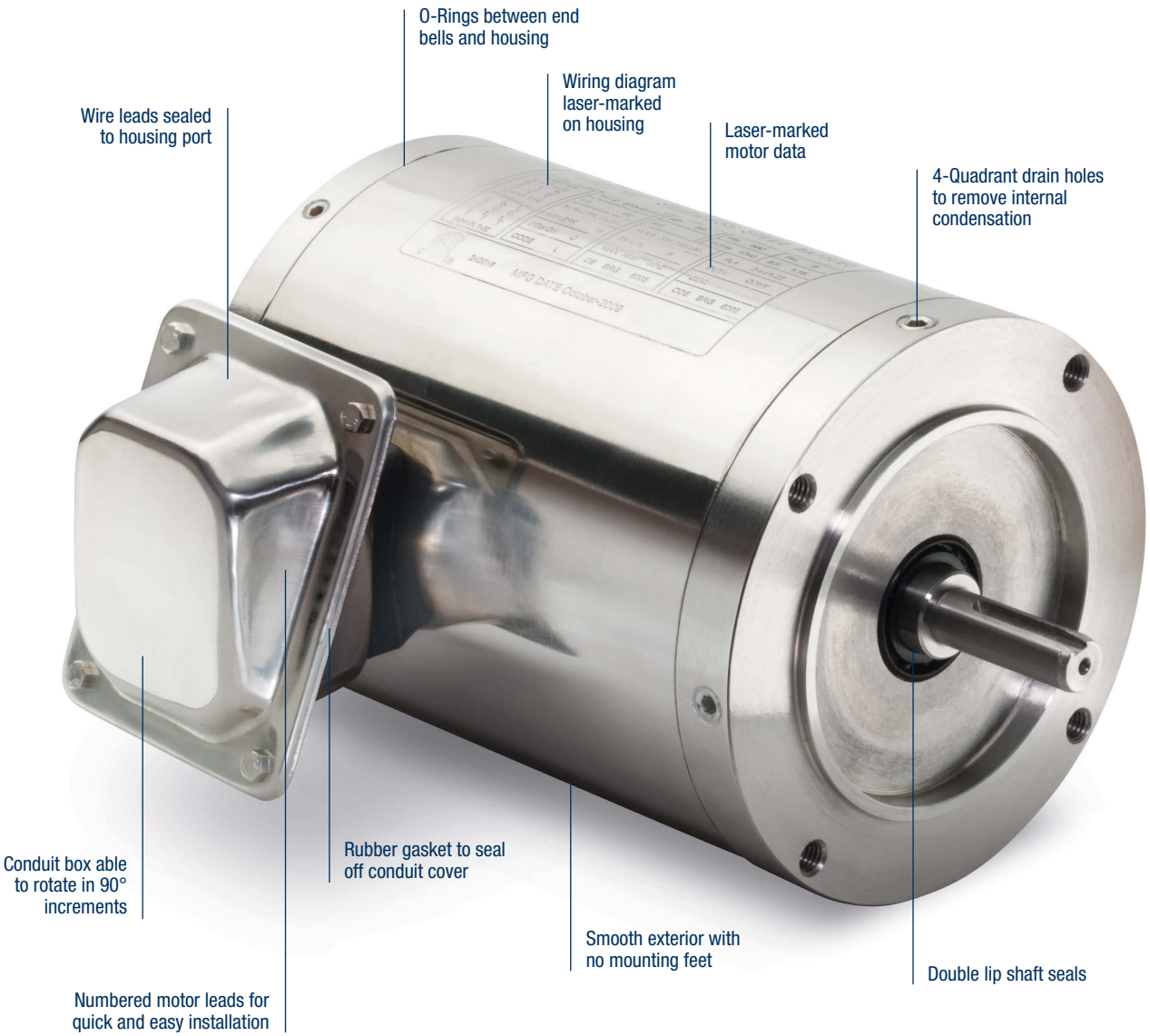
SIZE	A	B	C	D	E	F	G	H	J 56C/140TC	K	N1	N2	O	P
726	7.58	4.44	6.38	3.38	3.19	1.69	8.56	2.94	4.68	7.50	5.63	3.44	12.35	10.25
732	9.20	5.88	7.50	4.00	3.75	2.00	9.37	3.50	4.68	9.25	7.06	4.31	13.97	11.44

SIZE	Q	R 56C/140TC	S	T		Low Speed Shaft					Approx Weight (lbs.)		
				Tap Size	Depth	Solid Output Shaft		Hollow Bore Output					
						U1	V1	W-Key		Max U2	V2		
				Sq.	Length	SSFWD	SSHFWD						
726	5/16-24	3.33	2.50	3/8-16	.78	1.125	2.63	1/4	1-15/16	1.9375*	.73	62	69
732	5/16-24	3.33	2.88	7/16-14	.78	1.375	3.25	5/16	2-7/16	2.1875*	.88	85	98

* Refer to Table 1 on page 11.

Stainless Steel Motors... Value Engineered for Washdown Performance

UL / ULc / CE Certified



Exterior Construction

300 Series stainless steel housing, end bells, output shaft and conduit box

Interior Features

- Conforms to 2007 EISA efficiency standards
- Inverter Duty
- Class F insulation
- Class "B" rise @ 1.15 service factor
- Epoxy-coated windings
- Internally-locked bearings to eliminate unwanted axial movement

Stainless Steel AC Motors

Performance Data & Dimensions



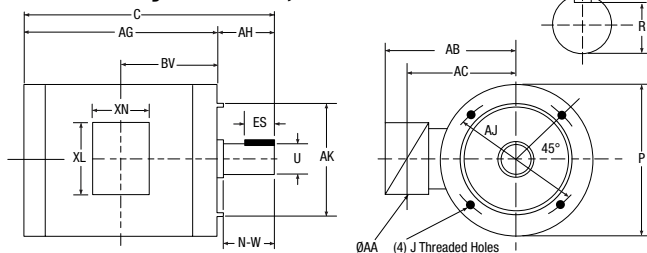
Performance Data

Part #	HP	Type	RPM	Frame	Voltage AC	Efficiency*	Full Load Amps (230/460)	Weight (lbs.)	Bearings
FUTSS	0.5	TENV	1720	56C	208-230/460-3-60	81.2%	1.62/0.81	28	6205
GUTSS	0.75	TENV	1720	56C	208-230/460-3-60	81.5%	2.44/1.22	31	6205
HUT-5/8SS	1	TENV	1720	56C	208-230/460-3-60	82.5%	3.04/1.52	35	6205
HUTF-5/8SS	1	TEFC	1720	56C	208-230/460-3-60	84.0%	3.10/1.60	35	6205
HUTSS	1	TENV	1720	143TC	208-230/460-3-60	82.5%	3.04/1.52	35	6205
HUTFSS	1	TEFC	1720	143TC	208-230/460-3-60	84.0%	3.10/1.45	35	6205
JUTFSS	1.5	TEFC	1720	145TC	208-230/460-3-60	84%	4.24/2.12	42	6205
KUTFSS	2	TEFC	1720	145TC	208-230/460-3-60	84%	5.44/2.77	49	6205
LUTFSS	3	TEFC	1765	182TC	208-230/460-3-60	87.5%	8.0/4.0	81	6308

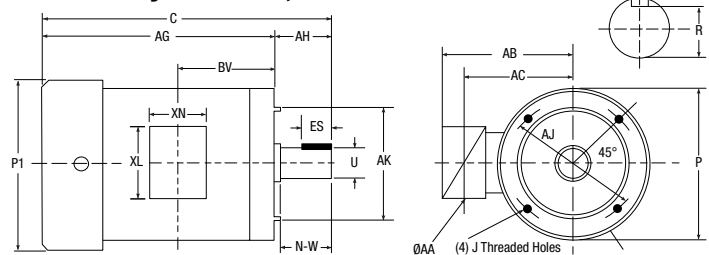
Ratings are for continuous duty at Max Ambient Temperature of 40°C
 TENV = Totally enclosed, non-ventilated
 TEFC = Totally enclosed, fan-cooled
 Note: 5HP, 7.5HP and 10HP motors available upon request.

All motors are inverter-duty rated at Service Factor of 1.15
 Motors can be run at 50 Hz with a derating factor applied
 *Efficiency meets or exceeds 2007 EISA standards

TENV Totally Enclosed, Non-Ventilated



TEFC Totally Enclosed, Fan-Cooled



NEMA Motor Dimensions (in.)

Boston Gear Bore Code	NEMA Frame	U	AK	AH	N-W	Key			AJ	J
						SQ.	LG	R		
B5	56C	.6250	4.5000	2-1/16	1.88	3/16	1.41	0.517	5.875	3/8-16
		.6245	4.4970							
B7	143TC	.8750	4.5000	2-1/8	2.00	3/16	1.41	0.765	5.875	3/8-16
	145TC	.8745	4.4970							
B9	182TC	1.1250	8.5000	3-1/8	2.75	1/4	1.78	0.990	7.25	1/2-13
		1.1245	8.4970							

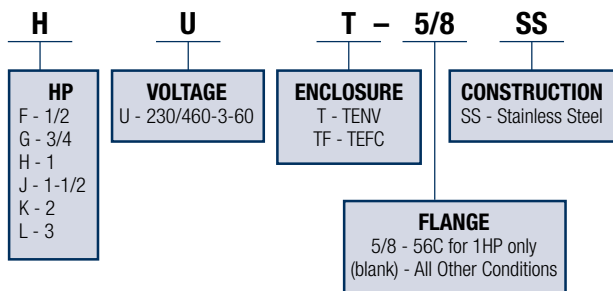
Dimensions (in.)

Catalog No.	HP	Frame	Mounting				Conduit Box					
			C	P	P1	AG	AA	AB	AC	BV	XL	XN
FUTSS	1/2	56C	9.64	6.45	—	7.58	0.87	5.43	4.65	5.33	4.40	3.81
GUTSS	3/4	56C	9.64	6.45	—	7.58	0.87	5.43	4.65	6.33	4.40	3.81
HUT-5/8SS	1	56C	10.77	6.45	—	8.64	0.87	5.43	4.65	6.33	4.40	3.81
HUTF-5/8SS	1	56C	11.59	—	7.35	9.53	.87	5.43	4.65	6.33	4.40	3.81
HUTSS	1	143TC	10.77	6.45	—	8.64	0.87	5.43	4.65	6.33	4.40	3.81
HUTFSS	1	143TC	12.63	—	7.35	10.51	.87	5.43	4.65	6.33	4.40	3.81
JUTFSS	1-1/2	145TC	13.50	6.45	7.35	11.38	0.87	5.43	4.65	7.44	4.40	3.81
KUTFSS	2	145TC	13.78	6.45	7.35	11.65	0.87	5.43	4.65	7.44	4.40	3.81
LUTFSS	3	182TC	17.40	6.45	7.35	14.27	0.94	7.60	5.30	8.75	4.45	4.05

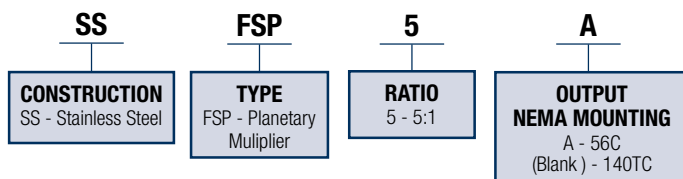
Note: 5HP, 7.5HP and 10HP motors available upon request.

SS700 Motors & Accessories How to Order

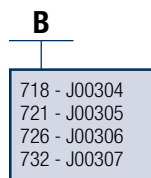
Stainless Steel AC Motors



Stainless Steel Stand-Alone Planetary Multiplier



Horizontal Base Kits for SS700 Series



All Customer Service phone numbers shown in bold

Electromagnetic Clutches and Brakes

Warner Electric

Electromagnetic Clutches and Brakes

New Hartford, CT - USA
1-800-825-6544

For application assistance:
1-800-825-9050

St Barthelemy d'Anjou, France
+33 (0) 2 41 21 24 24

Precision Electric Coils and Electromagnetic Clutches and Brakes

Columbia City, IN - USA
1-260-244-6183

Matrix International

Electromagnetic Clutches and Brakes, Pressure Operated Clutches and Brakes

Brechin, Scotland
+44 (0) 1356 602000

New Hartford, CT - USA
1-800-825-6544

Inertia Dynamics

Spring Set Brakes; Power On and Wrap Spring Clutch/Brakes

New Hartford, CT - USA
1-800-800-6445

Linear Products

Warner Linear

Linear Actuators

Belvidere, IL - USA
1-800-825-6544

For application assistance:
1-800-825-9050

St Barthelemy d'Anjou, France
+33 (0) 2 41 21 24 24

Couplings

Ameridrives Couplings

Mill Spindles, Ameriflex, Amerisc

Erie, PA - USA
1-814-480-5000

Gear Couplings

San Marcos, TX - USA
1-800-458-0887

Bibby Turboflex

Disc, Gear, Grid Couplings, Overload Clutches

Dewsbury, England
+44 (0) 1924 460801

Boksburg, South Africa
+27 11 918 4270

TB Wood's

Elastomeric Couplings

Chambersburg, PA - USA
1-888-829-6637 – Press #5

For application assistance:
1-888-829-6637 – Press #7

General Purpose Disc Couplings

San Marcos, TX - USA
1-888-449-9439

Ameridrives Power Transmission

Universal Joints, Drive Shafts, Mill Gear Couplings

Green Bay, WI - USA
1-920-593-2444

Huco Dynatork

Precision Couplings and Air Motors

Hertford, England
+44 (0) 1992 501900

Chambersburg, PA - USA
1-888-829-6637

Lamiflex Couplings

Flexible Couplings, Bearing Isolators, and Coupling Guards

São Paulo, SP - Brasil
+55-11-5679-6533

Heavy Duty Clutches and Brakes

Wichita Clutch

Pneumatic Clutches and Brakes

Wichita Falls, TX - USA
1-800-964-3262

Bedford, England
+44 (0) 1234 350311

Twiflex Limited

Caliper Brakes and Thrusters

Twickenham, England
+44 (0) 20 8894 1161

Industrial Clutch

Pneumatic and Oil Immersed Clutches and Brakes

Waukesha, WI - USA
1-262-547-3357

Gearing

Boston Gear

Enclosed and Open Gearing, Electrical and Mechanical P.T. Components

Charlotte, NC - USA
1-800-825-6544

For application assistance:
1-800-816-5608

Bauer Gear Motor

Geared Motors

Esslingen, Germany
+49 (711) 3518 0

Somerset, NJ - USA
1-732-469-8770

Nuttall Gear and Delroyd Worm Gear

Worm Gear and Helical Speed Reducers

Niagara Falls, NY - USA
1-716-298-4100

Overrunning Clutches

Formsprag Clutch

Overrunning Clutches and Holdbacks

Warren, MI - USA
1-800-348-0881 – Press #1

For application assistance:
1-800-348-0881 – Press #2

Marland Clutch

Roller Ramp and Sprag Type Overrunning Clutches and Backstops

South Beloit, IL - USA
1-800-216-3515

Stieber Clutch

Overrunning Clutches and Holdbacks

Heidelberg, Germany
+49 (0) 6221 30 47 0

Belted Drives and Sheaves

TB Wood's

Belted Drives

Chambersburg, PA - USA
1-888-829-6637 – Press #5

For application assistance:
1-888-829-6637 – Press #7

Engineered Bearing Assemblies

Kilian Manufacturing

Engineered Bearing Assemblies

Syracuse, NY - USA
1-315-432-0700

For information concerning our sales offices in Asia Pacific check our website
www.altramotion.com.cn



www.bostongear.com

701 Carrier Drive
Charlotte, NC 28216-USA
704-588-5610
Fax 704-588-7181

Customer Service:
800-825-6544
Application Assistance:
800-816-5608