

Key features

- Based on LED technology
- 2000 cd fixed / flashing red light
- Standalone unit with integrated power supply, fault monitoring, and day/night switch using photocell
- Integrated GPS for flash synchronisation as an option
- Fault monitoring through alarm relay and RS-485
- Communication over RS-485 or Ethernet/IP
- Easy to chain (Power and Master/Slave synchronisation)
- More than 10 year continuous maintenance-free operating time
- Very low power consumption
- Stabilised light output
- Lightweight and small – low wind load factor
- Dimmable down to 30 % and 10 %
- Integrated infra-red (IR) light as an option
- Comes with five (5) years warranty
- Patented

Specifications met

- ICAO International Standards and Recommended Practices: Aerodromes Annex 14 Volume 1, 5th Edition, July 2009, Chapter 6: Medium-intensity Obstacle Light
- FAA Advisory Circular 150/5345-43F 09/12/06: L-864 and L-885 light unit

Optical characteristics

- Intensity: 2 000 cd
- Colour: Aviation red
- Horizontal radiation pattern 360°
- Vertical radiation pattern 3°
- Flash rates: 20 fpm, 30 fpm, 40 fpm, 60 fpm and steady-burning

Electrical characteristics: AC model

- Operating voltage range 115/230 V_{AC} (± 10 %)
- Operating mains frequency 50/60 Hz (± 6 %)
- Power consumption 33 W 44 VA @ steady burning
- Power consumption 2.8 W @ 20 fpm (Flash duration 250ms)
- LED supply current stabilised by constant current generator

Electrical characteristics: DC model

- Operating voltage range 10 V_{DC}... 60 V_{DC}
- Power consumption 28 W @ steady burning
- Power consumption 2.3 W @ 20 fpm (Flash duration 250ms)



Obelux MI-2KR-230-A
(Illustration)

Mechanical characteristics

- Light head chassis: Anodised marine-grade aluminium
- Light head cover: Glass
- Terminal box: Polycarbonate
- Ingress protection IP65
- Operating temperature range -40 °C...+55 °C
- Storage temperature range -55 °C...+100°C
- Height 456 mm, diameter 160 mm
- Light unit weight 4.2 kg without mounting set
- Wind load 400 N with mounting set @ 200 km/h

Shipping

- Dimensions: 60 cm x 40 cm x 40 cm
- Weight: 13 kg

Made in Finland

How to order:

1. Select light head according to supply voltage:

Order code for light head	
Product code	Supply voltage
MI-2KR-230-A	230 V _{AC}
MI-2KR-115-A	115 V _{AC}
MI-2KR-DCW-A	10 V _{DC} ...60 V _{DC}

Other supply voltages are available on request.

2. Select mounting set according to local requirements:

Order code for mounting set	
OPT-MSV-2KR-A	Set for vertical mounting
OPT-MSH-2KR-A	Set for horizontal mounting
OPT-MSP-2KR-A	Set for plate mounting

3. Select factory-installed options if needed:

Order code for factory-installed options	
OPT-GPS-2KR-A	GPS synchronisation including integrated GPS antenna
OPT-LAN-2KR-A	Ethernet interface remote control
OPT-IR-2KR-A	Infra-red (IR) light - IR wavelength at 855 nm Compatible with Night Vision Goggles IR light power consumption: 6W @ steady burning 0.5W @ 20 fpm

Alarm relay characteristics

- Two pole contacts: Normally Open (NO) and Normally Closed (NC)
- Active when unit is powered
- Switch voltage (max): 110 V_{DC} or 125 V_{AC}
- Switch current (max): 1 A
- Switch power (max): 30 W
- Contact resistance 0.1 ohm

Recommended cables

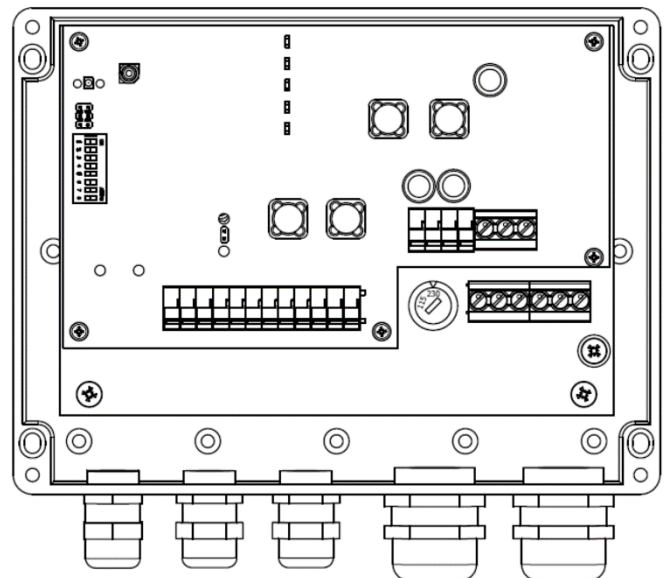
Recommended cables	
Alarm	CAT 7 (Outdoor)
Data	CAT 7 (Outdoor)
Power supply	3 x 2.5 mm ² (Outdoor) L-N-PE

Available cable glands

Alarm/Data In	M16 (cable diameter 6-10 mm)
Alarm/Data out	M16 (cable diameter 6-10 mm)
Power supply line	M25 (cable diameter 11-17 mm)
Power supply line	M25 (cable diameter 11-17 mm)

One cable gland (M16) is reserved – it is used to connect terminal box with the light head.

Illustration of cable glands in terminal box:

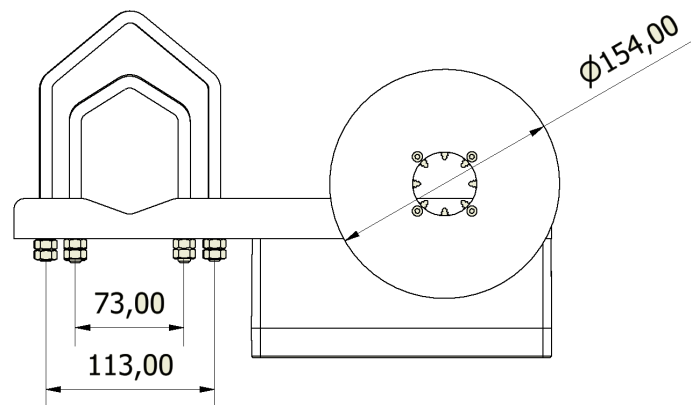
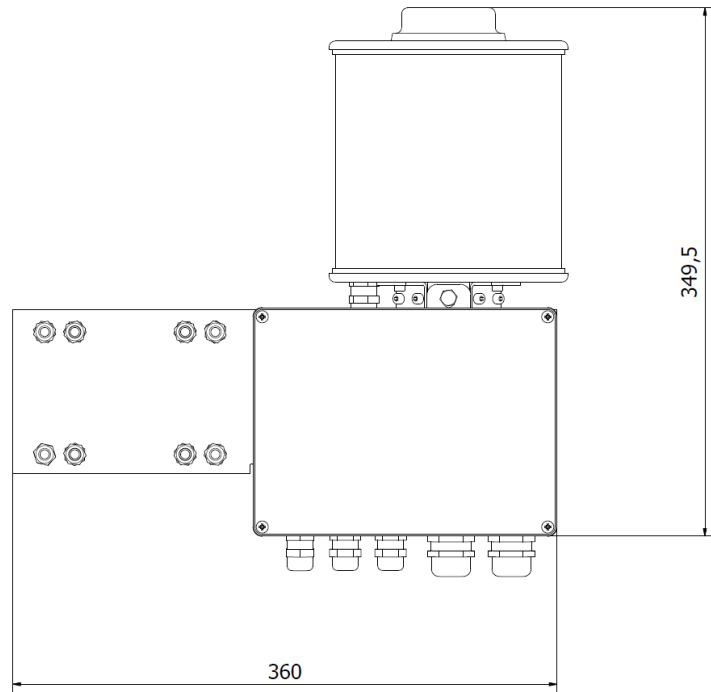


Obelux MI-2KR-A with vertical mounting set OPT-MSV-2KR-A

Mounting plate, U-bolts, hex nuts (A4):
AISI316 acid-proof stainless steel

Mounting set weight:
1.0 kg

Dimensions are in mm.



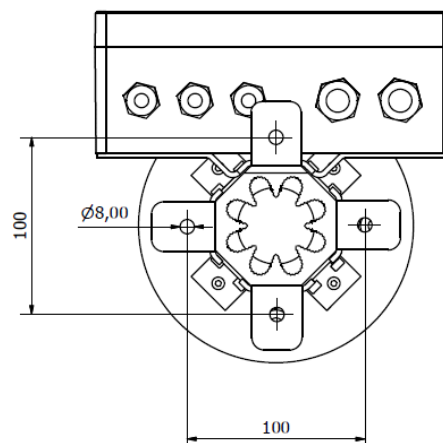
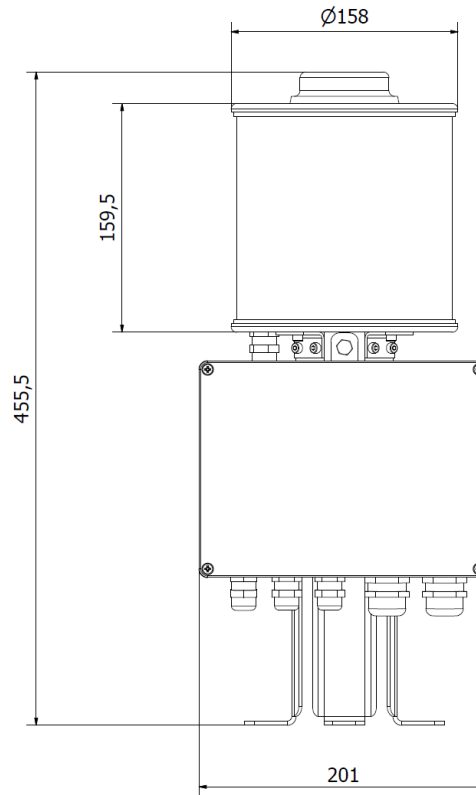
Obelux MI-2KR-A with horizontal mounting set OPT-MSH-2KR-A

Mounting plate:
Anodized aluminium

U-bolts, hex nuts (A4):
AISI316 acid-proof stainless steel

Mounting set weight:
0.5 kg

Dimensions are in mm.



Obelux MI-2KR-A with horizontal mounting set OPT-MSP-2KR-A

Mounting plate:
Anodized aluminium
Colour: black

U-bolts, hex nuts (A4):
AISI316 acid-proof stainless steel

Mounting set weight:
2.2 kg

Dimensions are in mm.

