



PCISCHEMATIC Tele is designed for documentation and survey of tele and data network installations

Local numbers, terminals, distribution frames, main distribution frames, cables, patchings, plugs, and who uses which local numbers. PCISCHEMATIC Tele enables you to create and maintain the survey of all this.

Therefore the program also includes specially designed dialog boxes for typing in different types of information, and how to connect these data. As a basic principle, changes in the installation are only updated at one place at one time.

Data are only updated one place one time

To make the program as simple to work with as possible, all information about the tele/data installation is placed in one single database. Therefore each piece of information is only stored at one place, and therefore only have to be updated at this very place - and not several other places -when changes are made.

The program is a multi-user system, where different employees can change data for the same installation at the same time.

All users are therefore updated with the latest changes instantly.

Clear survey and Fast to work with

In the program, it has been a top priority to present all types of information in as



You quickly get a survey over exactly which distribution frames and cables the connections must go through, all the way from the main distribution frame to the individual user plugs

simple a way as possible. For instance in the Equipment index window, which contains all distribution frames, terminals etc. The survey of these are here presented in a tree structure - just like you know it from the Windows Explorer.

Furthermore, it has also been of great importance to make the program as fast to

work with as possible, for instance by applying commonly known Windows principles such as drag and drop - eg. when connecting cables.

Always updated Reports

Reports containing data from the installation are generated directly from the database. The user therefore always gets the latest changes in the reports.

The program automatically generates many different reports, such as for instance a so-called route description, which graphically displays the route from the main distribution frame to the individual plugs - via distribution frames, cables and so on. Furthermore, you can

YOU GET A SURVEY OVER WHICH DISTRIBUTION FRAMES AND CABLES THE CONNECTIONS MUST GO THROUGH

simple a way as possible. For instance in the Equipment index window, which con-

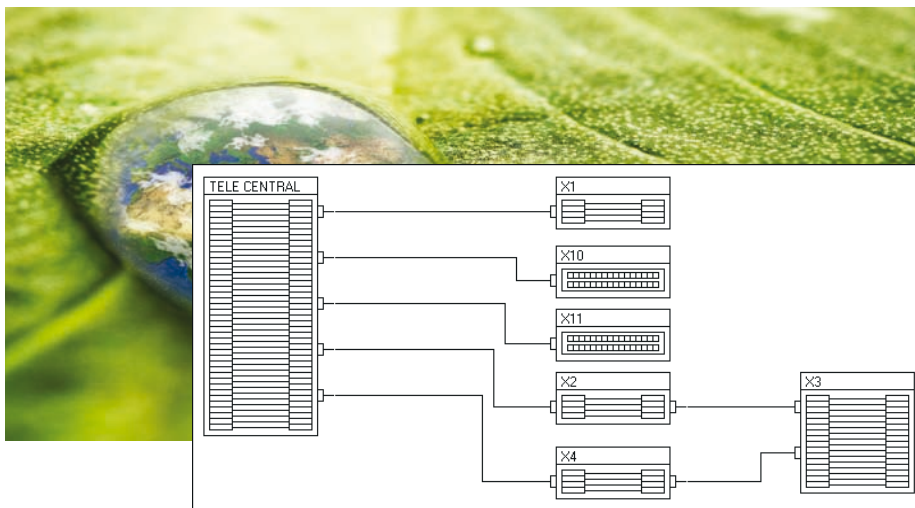
work with as possible, for instance by applying commonly known Windows prin-

individual plugs - via distribution frames, cables and so on. Furthermore, you can

generate distribution frame reports, cable reports, patch panel reports, local numbers reports, and reports over performed changes. These reports are generated as clear as possible visually. All reports can be printed, or saved as PDF files.

Get your Excel data transferred to PCISCHMATIC Tele

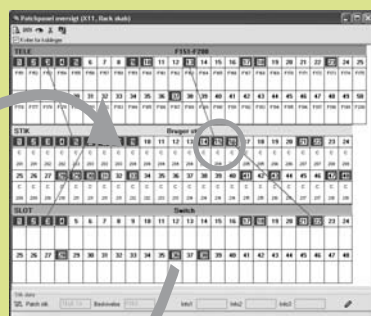
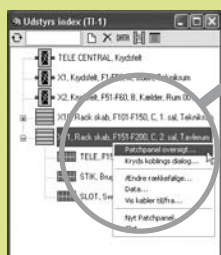
Users, that already have existing documentation in for instance Microsoft Excel (R), can have these data transferred to PCISCHMATIC Tele via PCISCHMATIC A/S. Beyond this, special courses in the program are offered. It is therefore possible to get started using the program quickly, for creating and maintaining the survey of your tele and data installations.



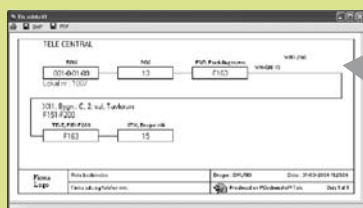
Graphic display of the full installation is also an option in PCISCHMATIC Tele. When you see a distribution frame in the survey of distribution frames, you can choose to see its position in the graphic display of the installation

YOU GET A GRAPHIC DISPLAY OF THE FULL INSTALLATION

1) CHOOSE PATCH PANEL SURVEY FOR THE PANEL



2) SELECT THE DESIRED POINT AND CREATE A ROUTE DESCRIPTION



Graphic reports / dialogue boxes

- **Graphic patchpanel reports** - interactive report
- **Graphic connection reports** - interactive report
- **Graphic cable reports** - interactive report

All reports in the program are interactive.

This both means that you can create/delete connections directly in the reports, and that **graphic route descriptions** can be created by double-clicking on any point in a report.

These route descriptions draws the route all the way from the main distribution frame to the individual user plug.

In the program you'll also find a window for graphic navigation based on the cable connections.

You can therefore click your way through all parts of the installation, and create interactive reports on the fly.